



GOLDEN PLAINS SHIRE

COMMUNITY ENGAGEMENT REPORT

2019

TEESDALE STRUCTURE PLAN

Community Engagement Summary Report

Executive Summary

Golden Plains Shire Council began preparation of the Teesdale Structure Plan in early 2019. The Strategic Planning Team commenced the project with the creation of a Background Report, which was then used to inform an initial Community Engagement program.

The opportunities provided for engagement prior to the preparation of the Structure Plan allowed the Teesdale community to express views that will be considered by Council as it develops the Structure Plan. Overall participation rates by the Teesdale community in the engagement activities were high.

Purpose

This report provides an analysis of consultation responses received through community engagement on the Teesdale Structure Plan Background Report. Its purpose is to help inform preparation of the Draft Teesdale Structure Plan, which will invite further consultation and a formal exhibition process at a later stage.

Introduction

During the community engagement from 29 August – 20 October 2019, a total of 166 survey forms (86 hardcopy 80 online) were received. Council officers have reviewed all consultation responses received and identified key feedback themes, which are outlined in this report (see Section 5 – Key themes).

There were 28 attendees at the two conversation posts held on Thursday 12 September 2019 and Saturday 14 September 2019, providing an opportunity for the Teesdale community to learn about the structure plan process and provide feedback to Council and ask any questions that they may have.

1. Engagement methodology

Community Engagement for the Background Report was conducted over a six week period, from 29 August to 20 October 2019, and consisted of a series of activities to provide multiple opportunities and platforms for the community to participate. A summary of the key activities is provided in the following table.

Engagement Activity	Overview
Direct Mail	An information package was sent to all residents and landowners of Teesdale on 29 August 2019. The package contained a copy of the survey form, a reply paid envelope, and an explanatory brochure outlining the consultation dates and project scope. A total of 86 survey responses were received via mail.
Council Website	A total of 80 online surveys were received. Information relating to the Structure Plan and related engagement opportunities was made available via Council's Strategic Planning and 'Have Your Say' webpages.
Conversation posts	Two conversation posts were held, one at the Teesdale Primary School on 12 September 2019, and one at the Teesdale Turtle Bend Park on 14 September 2019. There were 28 attendees in total.
Engage with key stakeholder groups	Initial engagement has been undertaken with a number of service providers, such as Powercor, Telstra and Barwon Water, in addition to conversations with VicRoads, CCMA, CFA and EPA. Further consultation and collaboration with additional stakeholder groups such the Wathaurung Aboriginal Corporation will be undertaken as an important part of the Structure Planning process.

Survey

The Community Survey was used as the primary engagement tool. The survey was designed to provide participants with an opportunity to communicate their priorities for the Teesdale Structure Plan. Respondents were asked to comment on areas such as commercial facilities, reticulated sewerage, and provision of infrastructure such as street lighting and parking.

The survey also sought community opinion on a preferred small scale capital works project which could result from the Teesdale Structure Plan, seeking preference on the following options:

- Street trees
- Town entrance feature
- Bird Boxes
- Other (Comment)

Key themes emerging from the survey responses can be found at *Section 5 – Key themes*. A copy of the survey is also provided at the end of this report as Appendix A.

Have your say/Strategic Planning webpages

Council's Have Your Say platform, as well as the Strategic Planning page, was used by visitors to view and download key information about the Teesdale Structure Plan and upcoming consultation opportunities, including linking to an online survey. This provision of information is an important factor in building the capacity of the community to participate in the engagement and make informed contributions.

Youth engagement

A youth activity was developed and offered at both conversation posts, as a locality with a disproportionately large amount of young families, it was important to Council that young people were involved in the engagement process. Two youth engagement worksheets can be viewed at Appendix B to this report.

Data limitations

In total, 166 survey forms were received during the engagement period. Whilst Council appreciate that statistically this number may not be representative of the entire Teesdale community, we will continue to create new ways to engage the community in future projects.

The themes drawn from these responses provide Council with an emerging picture of community sentiment around the key challenges facing the growth of Teesdale. It also provides the opportunity to consider the emerging themes in the development of the Teesdale Structure Plan, which will be released for community comment in 2020.

2. Demographic snapshot of respondents

Of the 166 responses received to the survey, 90% of respondents were residents of Teesdale



With a total of 166 surveys received, the survey was responded to by approximately 26.6% of households, or 9.5% of the total population.

ABS QuickStats (2016) determine that the population of Teesdale in 2016 was 1,721 people, and at this time, had 615 private dwellings, however information from Council's rates database suggests that it is more likely 620 private dwellings. Teesdale has a median age of 39, which is slightly older

than the Victorian average (37 years). The most prominent age group in Teesdale is children aged 10-14 years, representing 9.2% of the population. Teesdale also has a larger proportion of couple families with children (51.6%), which is higher than the Victorian average of 46.3%.

3. Key themes

Community aspirations

In response to Question 7 of the survey (*What type of community do you wish to live in?*) 67 respondents cited that a country/rural community was what they hoped Teesdale would remain as. The importance of the preservation of Teesdale’s rural character as an element which was emphasized in many responses to the survey. Additional responses are shown in *figure 1* below.

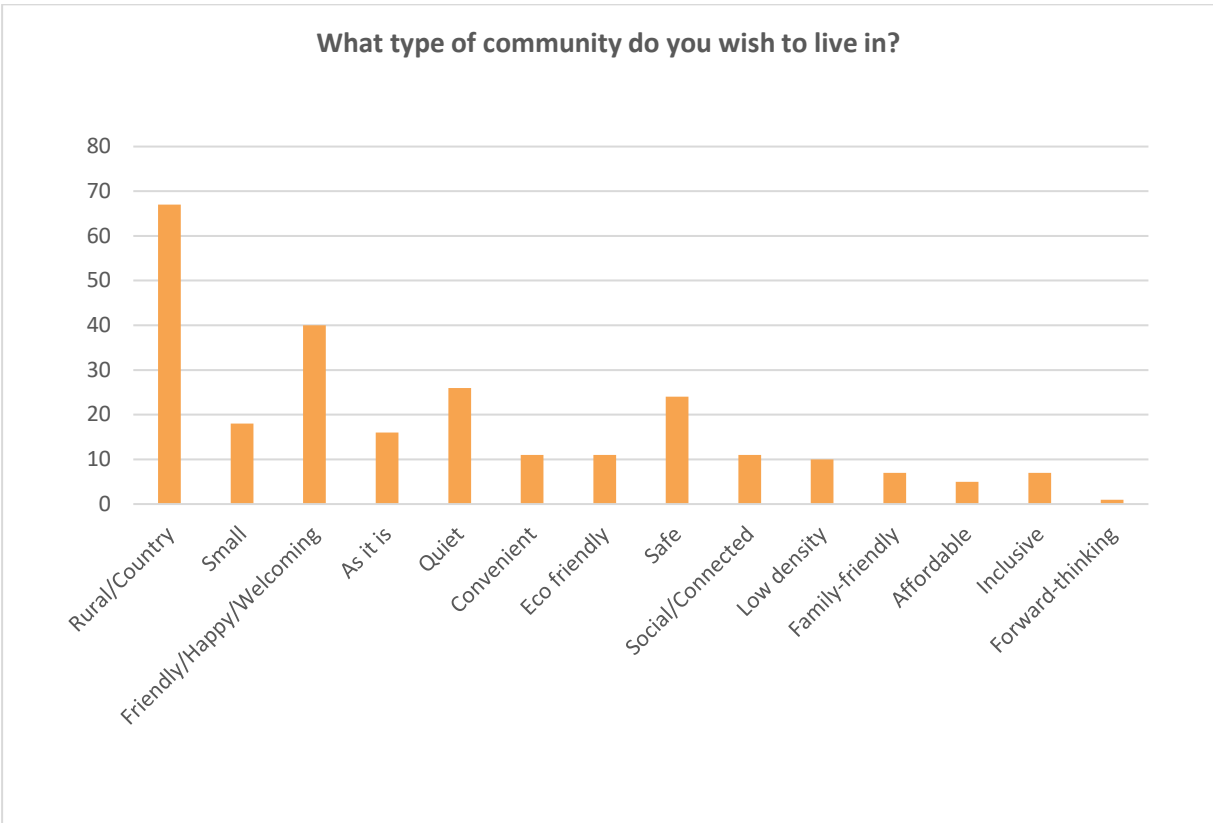


Figure 1 - Question 7 responses

Road safety & maintenance

From the 166 respondents, 80 cited the car parking facilities in Teesdale to be insufficient. 54 of these respondents noted the General Store to be the worst location for parking in the locality, outlining safety concerns and convenience issues as the main reasons for this. 20 respondents also highlighted the parking around Teesdale Primary School as inadequate, citing insufficient availability as the main concern.

Limitation of further residential development

A majority of respondents, totaling 126, stated that they do not wish to see reticulated sewerage in Teesdale, some respondents were opposed because of the smaller sized allotments and increase of residential development this would allow. 32 respondents said that they would support investigations into reticulated sewerage in Teesdale.

Commercial facilities

In response to Question 2, 'Do you want to see more commercial uses in Teesdale', 50% of respondents wished to see more commercial facilities in Teesdale, whilst 44% believe the current commercial facilities are adequate. The remaining 5% were unsure or did not specify. Residents made the following statements in response to Question 2:

'I personally don't mind the idea of more commercial uses in Teesdale. However I would rather they not be food chains or petrol stations or another fish and chip place that will take business from the post office.'

'Small supermarket & café would be nice, especially near the corner shop/post office.'

'Yes, most definitely. It is a growing population and there are not many amenities. The general store is wonderful, but we need more. Currently travelling 15km to Bannockburn isn't feasible with a growing population.'

'No. People live here because they don't want those services in their faces. Bannockburn has all that you need'.

'No – if I wanted to live in a commercial area I wouldn't have moved to Teesdale'.

'Absolutely not. We came to the country to enjoy a peaceful country life, the General Store and Pharmacy are all we need.'

Entrance feature

When asked whether Teesdale would benefit from an entrance feature to the township, 60% of residents were in support of this suggestion. The most popular option suggested the form of which the entrance feature should take was trees or landscaping (20 respondents), with 12 respondents wanted to see a stone wall feature constructed similar to that of Inverleigh and Lethbridge.

Street Lighting & Street Trees

Question 4 and 5 requested community sentiments on whether or not Teesdale would benefit from additional street lighting or street trees. Of the 147 responses to Question 4, 42% said they would not see benefit from the provision of additional street lighting, 34% believed street lighting would be of benefit, and 23% were unsure or did not specify. Of those who responded yes, the most popular locations for additional street lighting were along Main Road, at key intersections, and near the general store.

Of the responses to Question 5, 51% of respondents wished to see more street trees planted in Teesdale, with 30% saying additional trees would not be of benefit, and 17% of respondents were

unsure or did not specify. The most popular varieties of trees suggested in the responses to this Question were natives (31 respondents), gum trees (11 respondents) and flowering trees (6 respondents).

Considerations for the Structure Plan

Question 9 asked residents if there was any suggestions or comments which they wished to suggest Council to consider in its investigations. Whilst many of the responses provided in this section were related to issues which are not considerations of the Structure Planning process, it is still important to gather this information.

- 25 respondents wanted Council to address road improvements/safety/maintenance issues.
- 35 respondents wanted Council to prevent further growth and preserve Teesdale's rural character.
- 18 respondents wanted to see improvements to Teesdale's recreational facilities, including open space and paths & trails.
- 11 respondents wanted Council review the potential for infrastructure and facility upgrades.
- 6 respondents wanted to see commercial expansion addressed.
- 4 respondents wanted Council to investigate the potential for better transportation connections from Teesdale to surrounding localities
- 3 respondents wanted to see ongoing community engagement which has a meaningful impact on the project.

A number of responses were also in relation to waste collection (2 responses), and rates (4 responses). Where possible, feedback from the surveys was forwarded on to the relevant Council department.

The 23 respondents who wished Council to prevent further growth in Teesdale expressed opposition to actions which would facilitate this, such as encouragement of infill subdivision, rezoning, shifting the town boundary, and approval of large-scale subdivisions.



Capital works project

Question 10 of the Teesdale Structure Plan Survey asked for feedback regarding a small project which Council could undertake in Teesdale as a result of the Structure Plan process. Some specific options were provided whilst respondents were also able to provide another suggestions. The following data was collected, as shown in figure 2 below:

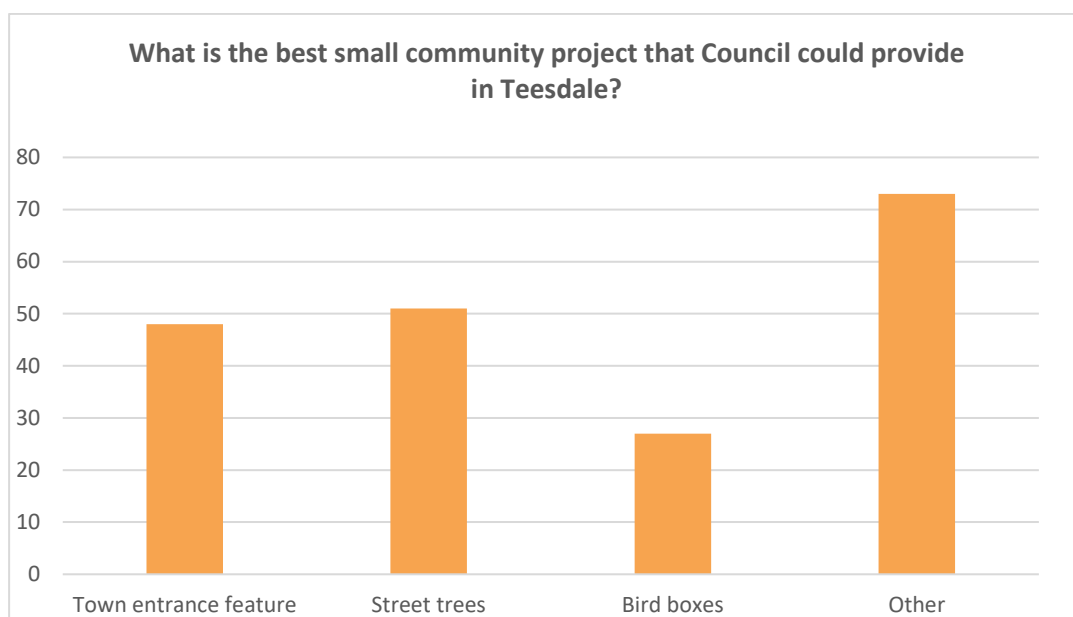


Figure 2 – Question 10 responses

The responses which listed other suggestions to this question saw the emergence of the following themes, as displayed in figure 3 below:

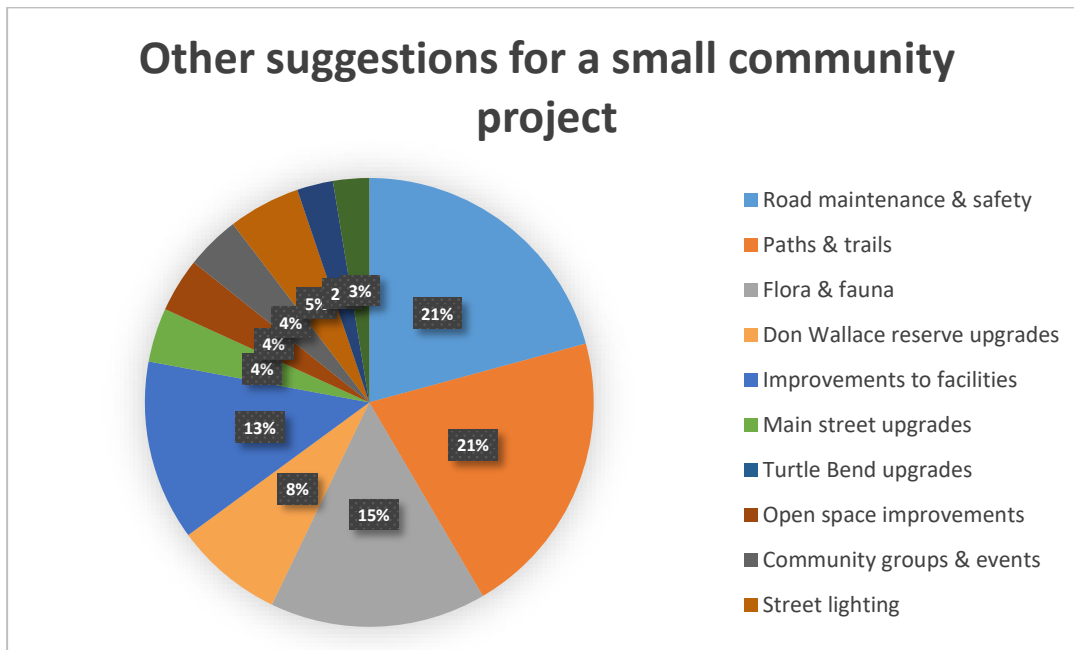


Figure 3 – Other suggestions to Question 10

Other potential improvements mentioned were in reference to art features, postal service implementation, continued Community Engagement opportunities and interpretive signage.

Whilst a number of the suggestions raised in the responses to this question are too costly to undertake as part of the Structure Plan process, it does offer insight into future projects which could be advocated for, with many having potential to be considered in the Structure Plan in some way.

4. Next steps

Following the completion of the initial consultation phase for the Teesdale Structure Plan, the Strategic Planning Team will begin to commence investigations as a result of the information gathered through both the background report and consultation findings. Council will provide updates regarding the project via its social media accounts and the Strategic Planning webpage.

Once the Teesdale Structure Plan has been prepared, the community will have opportunity to review the contents of the Structure Plan when it is formally exhibited as part of a planning scheme amendment process, where they will be invited to make submissions in support or objection to the contents of the proposal. Any unresolved submissions will then progress to a Panel Hearing, which will be chaired by an independent panel member appointed by the Minister for Planning.

If you would like to register your interest to receive a copy of the Draft Teesdale Structure Plan for further review, please register your interest by emailing enquiries@gplains.vic.gov.au (subject line 'Future Engagement: Teesdale Structure Plan').

5. Appendices

Teesdale Structure Plan Community Survey – Appendix A

Notes:

- *An electronic copy of this survey can be obtained at:
<https://www.goldenplains.vic.gov.au/residents/my-home/planning/strategic-planning>*
- *The Teesdale Structure Plan background report is recommended reading prior to completing this survey.*
- *If not enough space is provided, you may wish to use a separate piece of paper.*

Name:

Address:

1. Which sentence best describes your relationship with Teesdale (circle whatever is applicable).
 - a) I am resident of Teesdale
 - b) I own land in Teesdale but do not live there
 - c) I work/own a business in Teesdale
 - d) I am a land developer
 - e) None of the above
2. Do you want to see more commercial uses in Teesdale (e.g. shops, restaurants, a service station or other)?
Do you have a view of where these services should be located?
3. Would Teesdale benefit from an entrance feature, sign or additional trees to help mark the town entrance?
4. Would Teesdale benefit from the provision of any street lights? If so, where?

Note:

Street lights in newer low density subdivisions are often provided at key intersections, at sharp bends in the road and the end of court bowls.

5. Do you think that Teesdale would benefit from more street trees? If so, what type of street trees and where?

6. Is the current car parking situation in Teesdale sufficient? If not, where could it be improved?

7. What type of community do you want to live in?

8. Do you think that Teesdale (existing and new areas) should be serviced with reticulated sewer?

Note:

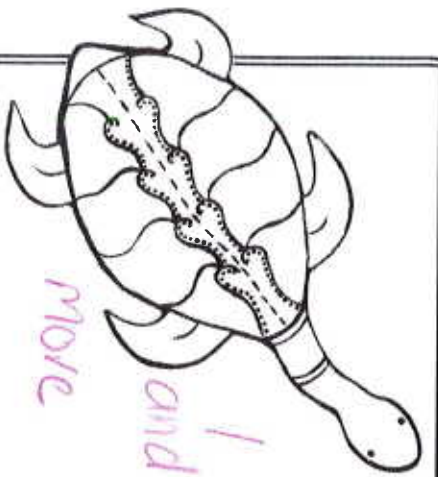
- Barwon Water currently have no plans to sewer Teesdale. Expression of community preferences through the Structure Plan development process may be used as a starting point for discussions with Barwon Water.
- Reticulated sewer is not free for land owners. A connection cost and ongoing charge for sewer would be required.
- Reticulated sewer has the potential to change the development potential of the town, allowing for a higher density.

9. Is there any suggestions or comments you would like to provide for Council to consider for the Teesdale Structure Plan?

10. What is the best small community project that Council could provide in Teesdale? (A physical project may be undertaken as a result of the Structure Plan). Circle whatever is applicable.

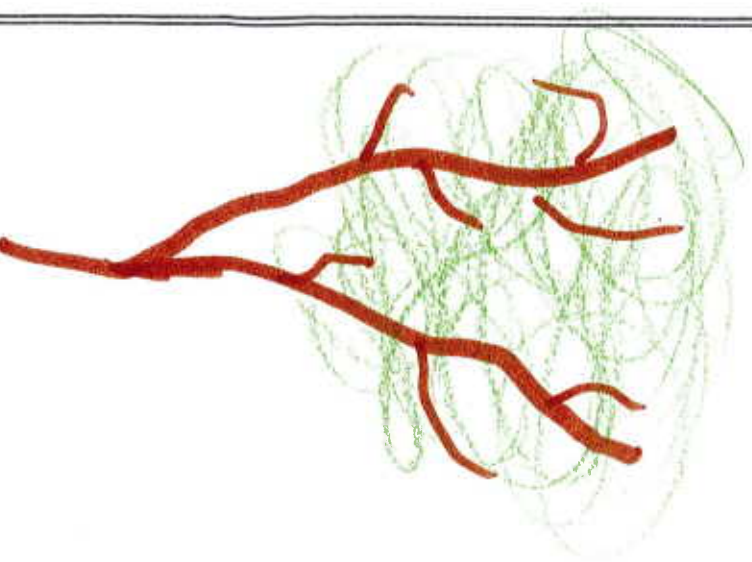
- a.) Street trees
- b.) Town entrance feature
- c.) Bird boxes
- d.) Other (please describe)

Appendix B – Youth engagement activity

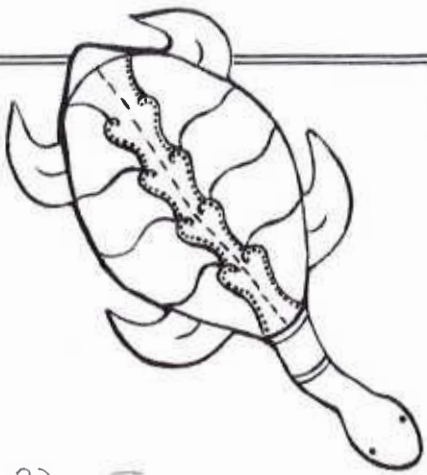


IN 2050, I WANT TEESDALE TO LOOK LIKE...

I would like an inclusive environment
and to be ~~and~~ environmentally healing, ~~to~~ house
more facilities close, I love Teesdale ☺



GOLDEN PLAINS SHIRE



IN 2050, I WANT TEESDALE TO LOOK LIKE...

Teesdale

In 2050 I would like to be a vibrant, multicultural area. Encompassing all walks of life through art and the lay of the landscape, Teesdale, I would hope to be a welcoming, attractive environment. This multiculturalism would also be expressed through open areas of meeting, with an area of fun-playground - and an area inclusive of wildlife. I would like to see this because of the growing population and rate of subdividing.