

Golden Plains Shire

Vol 2 - Paths and Trails Strategy 2013-2017

Final Report

ASR Research Pty Ltd
July 2013

TABLE OF CONTENTS

SECTION ONE – INTRODUCTION	3
1.1 Aim and Objectives of Study	3
1.2 Methodology	3
1.3 Definitions	3
SECTION TWO – PATHS AND TRAILS STRATEGY	4
2.1 Introduction	4
2.2 Vision	4
2.3 Objectives	4
2.4 Guiding principles	5
2.5 Strategic priorities	5
2.6 Classification systems	6
2.7 Provision standards	6
2.8 Policies and practice	6
2.9 Action plan	7
2.10 Funding/budget allocations	7
2.11 Monitoring and evaluation	8
APPENDICES	16
Appendix A – Priority Rankings: New paths/trails	34

SECTION ONE – INTRODUCTION

1.1 Aim and Objectives of Study

The aim of the Study is to develop a strategy to guide the future provision of paths and trails across the Golden Plains Shire.

The objectives of the Study are to:

- Develop an inventory of paths and trails provision.
- Identify gaps, deficiencies or oversupply in provision.
- Provide directions to Council regarding the future provision of paths and trails.
- Develop a prioritised set of recommendations for future provision.

1.2 Methodology

The Study methodology involved the following steps:

- A review of relevant literature.
- Inspections of paths and trails.
- Community consultation:
 - 8 township forums
 - Surveys of reserve committees and schools
 - Written submissions from residents and groups
 - 3 meetings with the community reference committee.
- Council consultation:
 - Interviews/meetings/workshops with Council staff involved in the planning, development, management and maintenance of paths and trails
 - Meetings with the internal Council reference committee
 - Workshop with Golden Plains Shire Councillors.
- Meetings and interviews with open space managers (other than Council) – Ballarat Environment Network (BEN), Parks Victoria and the State Department of Sustainability and Environment (DSE).
- Interviews with land care/environment groups.

1.3 Definitions

For the purpose of this study, paths and trails include footpaths and walking, cycling and horse trails.

The Study has considered paths and trails that are located on public land owned by Council and State Agencies such as DSE, Parks Victoria (Parks Vic), VicTrack and VicRoads.

SECTION TWO – PATHS AND TRAILS STRATEGY

2.1 Introduction

This section contains the following:

- A statement about the role that paths and trails play in achieving the Shire's vision.
- Council's strategic objectives for the future provision of paths and trails.
- Planning and management principles which will guide the Shire's decision making with respect to the future provision of paths and trails.
- Provision standards for paths and trails.
- A plan which identifies the cost and suggested timelines for developing, upgrading and redeveloping paths and trails across the Shire.

The plan responds to the findings and issues detailed in Volume 3 to this report - Township Analyses, Key Findings and Major Issues.

2.2 Vision

The Council's vision for Golden Plains Shire is that:

'It will offer a lifestyle and opportunities that foster social, economic and environmental well-being. In partnership with the community, the Council will provide strong leadership, encourage sustainable development and ensure quality services to continue to improve the quality of life of residents'

Paths and trails play a vital role in realising this vision. These facilities:

- Enhance community well-being through:
 - Encouraging recreational activity: walking, cycling, riding etc
 - Encouraging social interaction: groups walking along trails, resident meeting on trails etc
 - Providing a public place for residents to rest and relax.
- Play an integral role in linking communities, internally and externally.
- Provide access to community facilities and other important destinations.
- Provide opportunities for people to view, access, experience and understand the natural and cultural environment and heritage places.
- Create economic activity by offering recreation and tourism experiences.

2.3 Objectives

The Paths and Trails Strategy is aimed at achieving the following strategic objectives:

- An active, vibrant healthy and connected community.
- A range of suitably designed and accessible paths and trails that are well used and maintained and adequately satisfy the various needs of the Golden Plains' community, now and into the future.
- A profile of paths and trails that Council and the community have the capacity to deliver, properly maintain and effectively manage.
- An equitable distribution of paths and trails across the municipality.

2.4 Guiding principles

The following principles underpin the Paths and Trails Strategy:

- The Golden Plains community will have good access to paths and trails.
- Paths and trails will be accessible to people of all ages and abilities.
- Local communities will be involved in the planning of paths and trails.
- Adequate resources will be allocated to maintain existing and develop and maintain future paths and trails.
- A proactive and planned approach will be taken to the development, planning and maintenance of paths and trails.
- Demographic trends in Golden Plains will be monitored and taken into consideration in the planning of paths and trails.
- Neighbouring municipalities, Government agencies, community organisations, developers and private service providers will be consulted, where appropriate, to ensure paths and trails are planned and developed in an integrated manner.
- Paths and trails will be developed and managed in a manner that is financially responsible and provides best value to Council and the community.

2.5 Strategic priorities

The Strategy's strategic priorities are:

- Restoring/upgrading existing paths to a suitable standard.
- Addressing pedestrian safety.
- Providing links within townships to community facilities.
- Linking paths in urban areas.
- Establishing connected networks of paths and trails, including activity circuits.
- Developing paths and trails along natural features like rivers, creeks and ridge lines, where feasible.
- Properly signing paths and trails (directional signage of paths and to destinations off paths).
- Linking townships without schools to townships with schools, where feasible.
- Linking nearby townships, where feasible.

A decision to construct a path/trail will be based on the level to which it satisfies these strategic priorities and consideration of the following factors/attributes (where relevant):

- The density of residential development in the street where the path is to be constructed.
- The volume of foot and cycle traffic the path/trail will receive.
- The function and destination of the path/trail, i.e. will the path/trail link to a community facility or commercial area, will the path link to another path, does the trail run along a river, will the trail link population centres?
- Site conditions and cost of construction and maintenance.
- Availability of funding to construct and maintain the path/trail.
- The level of support for the path/trail from the households or communities served by the path/trail.

2.6 Classification systems

Paths and trails will be classified by the geographic area they serve and the number of townships or parts of a township they connect. The classifications will be:

- Regional/subregional - a trail traversing a large section of at least one municipality and/or connecting three or more townships.
- District – a trail connecting two townships.
- Township – a trail/path which traverses one township.
- Collector – a path which caters for two or more local streets.
- Local - a path which caters for one street.

2.7 Provision standards

The provision standards for paths and trails will be:

- Surface type:
 - In urban settings: Concrete or asphalt. Gravel and granitic sand could be considered as an interim measure
 - In semi-rural and rural settings: Concrete, asphalt, gravel, granitic sand, grass or dirt
 - Near and over water bodies and drainage lines that are subject to flooding: Concrete, timber boardwalks or bridges.
- Widths of paths/trails ranging from 1.5m-3.5m.
- Paths/trails constructed as per the standards in the Infrastructure Design Manual (IDM) 2010.
- The choice of surface type and path/trail width will be based on a consideration of the preferences of users/residents, the function and location of the path/trail, its potential level of use, its topography and other site conditions, and its susceptibility to erosion and other damage (e.g. tree roots).

Signage will be provided along or near trails. The signage will comprise:

- Information signage - to identify facilities and features along or near the trails that may be of interest to walkers, etc.
- Rules signage - to encourage users to show care for others, the trails and the surrounding environment when walking or riding the trails.
- Directional signage – to assist people using trails with way-finding.
- Interpretive signage – to highlight natural and historical features of interest along paths/trails.

Seating, shade, shelter, bike parking and water points will also be provided at appropriate locations along the trails.

2.8 Policies and practice

New paths and trails are being created without a commitment being made to adequately fund their development and on-going maintenance. Council should adopt a policy that no new path or trail will be

created without a management and maintenance regime being developed for the path or trail and a formal commitment being made to adequately fund this regime.

2.9 Action plan

The Action Plan for the Paths and Trails Strategy is presented in Table 1. The actions are listed under geographic areas and relate to:

- The planning, management and operation of paths and trails across the Shire.
- The development, upgrade or restoration of specific paths and trails.

For the purposes of the Action Plan:

- 'Upgrade' refers to changing the surface type of a path to a higher standard or substantially improving the quality of the path.
- 'Restore' refers to reinstating a path in its original and best condition.

Indicative priorities have been assigned to each recommendation, where relevant. The priorities have been determined by applying the strategic priorities listed in Section 2.3 of this document. The priorities are expressed as 1-6 with 1 being high and 6 being low. It should be noted that:

- **Path development** works have been ranked according to a scoring system out of 12 (see Appendix A) with works getting a score of 7+ receiving the highest priority.
- All **path upgrade/restoration** works have been rated as having a high priority (no 1).
- Most of the recommendations relating to the development of **new trails** have been ranked as low (no 5 and 6) as they are aspirational, potentially very costly and/or subject to further feasibility assessment. **Note that the rankings of these trails may rise once the feasibility and cost assessments are completed.**
- **Other works** have been subjectively ranked by the author of this report.

Cost estimates have also been made for each recommendation, where possible. The cost estimates are very 'preliminary' and will need to be firmed up through detailed design and costing processes. Responsible organisations have been assigned to each recommendation. Organisations external to Council will need to be involved in the implementation of these recommendations. These organisations include Government departments and agencies such as DSE, Parks Victoria, VicRoads and community committees.

It is recommended that the local communities to be served by proposed new path works be consulted prior to any works being formally planned and undertaken. It may be a community's strong preference that its area retains a 'rural look' and it may not want sealed or unsealed paths in its streets.

2.10 Funding/budget allocations

Council currently allocates the following amounts per annum to path construction and maintenance:

- Path construction/upgrade - \$150000.
- Path restoration/maintenance - \$67000 (including \$12000 for the Ballarat Skipton Rail Trail).

These amounts are supplemented by external grants, developer contributions, in-kind labour and financial contributions by community groups.

The Council allocations only provide for a modest quantity of works. For example, the \$150000 path construction budget would fund the development 1.2kms of concrete path (1.5m width) or 3.3kms of granitic sand path (1.5m width). The path maintenance budget provides for the removal of hazards, some weed spraying and some reactive reinstatement. It does not provide for cyclical resurfacing of paths. It is recommended that Council give consideration to increasing the above allocations. Suggested allocations are as follows:

- Path construction/upgrade – \$200000 and CPI thereafter
- Path restoration/maintenance - \$80000 and CPI thereafter

The Paths and Trails Strategy also recommends new annual allocations for specific items. These include:

- \$5000pa for public art works along trails.
- \$5000pa for seating, water fountains and other infrastructure along trails.
- \$5000pa for promotional literature and maps for trails.
- \$20000pa for signage of trails.
- \$10000pa for the improvement/maintenance of Kuruc-a-ruc Trail.
- \$2000pa for the improvement/maintenance of the Rainbow Bird Trail.

2.11 Monitoring and evaluation

The Path and Trails Strategy should be treated as a 'living document' and as such, should be amended/updated when:

- Relevant planning documents are completed that impact on the Strategy.
- More advanced information is produced about the individual recommendations.
- More is known about likely potential funding sources and mechanisms for the development of paths and trails.
- Formal decisions are made to amend or not pursue an action in the Strategy.
- Individual works are completed.

A formal review of the Strategy should be undertaken each year. The outcomes of the review should be communicated to the Shire's local communities.

Table 1 – Action Plan: Paths and Trails Strategy

No	Action	Location	Approx. Length (m)	Surface Type	Est. cost \$	Priority Ranking	Involved Organisations
Shire/General							
1	Adopt the principles, strategic priorities and classification system for paths and trails provision as outlined in Section 2 of this document.	-	-	-	-	1	GPS
2	Adopt the policy that paths and trails will only be developed if there is an adequate maintenance and management regime in place and funding committed to implement the maintenance regime.	-	-	-	-	1	GPS
3	Develop a bicycle strategy.	-	-	-	15000	2	GPS
4	Develop an asset management plan for Council controlled paths and trails.	-	-	-	-	2	GPS
5	Develop a horse trail strategy.	-	-	-	10000	2	GPS
6	Develop promotional literature for major recreational trails in the Shire.	-	-	-	5000 pa	1 and ongoing	GPS
7	Audit the condition of the unsealed paths in the Shire and damaged and poorly visible paths be identified. Make a determination in consultation with the communities served by the paths about which paths should be reinstated and to what standard. Develop and implement a program of reinstatement.	-	-	-	-	1	GPS
8	Develop and implement a signage policy/program for path and trails as per Section 2.7 of this document.	-	-	-	20000 pa	1 and ongoing	GPS
9	Identify locations along trails for the provision of public art. Install art pieces.	-	-	-	5000 pa	2	GPS
10	Identify locations along trails for the provision of seating, shelters, water fountains and bicycle racks. Install seating etc.	-	-	-	5000 pa	2	GPS
Bannockburn							
11	Continue to develop the paths and trails network consistent with the Bannockburn UDF and Bannockburn Infrastructure Development Plan.	New residential areas Along Bruces Creek Around township growth boundary	TBD	TBD	TBD	Ongoing	GPS
12	Construct sealed paths at the following locations:						
	- Along McPhillips Rd	High St to Moore St	260	Concrete	33800	2	GPS
	- Along north side of Milton St	Byron St to Moore St	130	Concrete	16900	2	GPS
	- Along north and south side of Milton St	Burn St to Recreation Centre	1300	Concrete	169000	1	GPS
	- Along Kelly Rd	Clyde Rd to existing path	430	Concrete	75465	2	GPS
	- Along Byron Rd	McPhillips Rd to Pope St	460	Concrete	59800	3	GPS
	- Along Moore St	McPhillips Rd to Pope St	440	Concrete	57200	3	GPS
	- Along Elrae Crt	Full length	260	Concrete	33800	3	GPS
	- Along Earl Crescent	Alice Mews to Levy Rd	550	Concrete	71500	3	GPS
	- Along Charlton Rd	Glenbrae Ct to path at Fenwick Fwy	525	Concrete	68250	3	GPS
	- Along Douglas Crt	Existing path to Charlton Rd	170	Concrete	22100	3	GPS
	- Along Glenbrae Crt	Full length	300	Concrete	39000	3	GPS
	- Along Edenborough Way	Full length	200	Concrete	26000	3	GPS
	- Along Camden Mews	Full length	110	Concrete	14300	3	GPS
	- Along Alice Mews (western end to James Place).	Western end to James Place	85	Concrete	11050	3	GPS
	- Along Burnside Rd	Existing path to Glen Avon Drive	1200	Concrete	156000	2	GPS
	- Along Dalcrui Drive to Burnside Rd	Existing path to Burnside Rd	260	Concrete	33800	1	GPS

No	Action	Location	Approx. Length (m)	Surface Type	Est. cost \$	Priority Ranking	Involved Organisations
13	Restore the granitic sand path along Clyde Rd.	Between Shelford – Bannockburn Rd and Lowndes Rd	780	GS/Gravel	15600	1	GPS
14	Make provision for the development of a trail around the perimeter of the growth boundary of the township.	Growth boundary as described in UDF	17000	GS/Gravel	850000	As development occurs	GPS
15	Explore the feasibility of developing: <ul style="list-style-type: none"> A path network in the established residential area north west of High St/Shelford Bannockburn Rd between Milton Rd and Darriwell Drive A circuit path around or a NE-SW link through Victoria Park A trail along the Bannockburn-Shelford Rd linking the residential areas to the Business Estate. A trail along the railway line or Midland Hwy to Lethbridge. 	Somerset Crt, Burns St, Sandhurst Crt, Piloud St	1300	Concrete	169000	4	GPS
		Around perimeter of or through reserve	1200	GS/Gravel	60000	5	GPS
		Bruce's Creek to Holder Rd	1200	GS/Gravel	80000	5	GPS VicRoads
		Imperial Way to Lethbridge; or Clyde Rd to existing path in Lethbridge on Midland Hwy	8500 7000	GS/Gravel GS/Gravel	425000 350000	6 6	GPS VicTrack VicRoads
16	Explore the feasibility of extending the path along Clyde Rd to Warrak Drive.	Lowndes Rd to Warrack Dve	610	GS/Gravel	32000	6	GPS
Batesford							
17	Develop a trail along the Moorabool River in the Riverstone Estate which links to the COGG trail.	Along river in estate	2400	GS/Gravel	120000	As development occurs	GPS Developers
18	Explore the feasibility of developing a trail through the town along the Midland Hwy.	River to Daruma Way	2500	GS/Gravel	125000	6	GPS VicRoads
19	Make a determination about the future of the sand paths in Duruma Place, Glenora Place and Tarraford Way - should the paths remain, should the overgrown section be reinstated, what surface type should be used? Involve the community in this process. Reinstatement the paths if supported by the community.	Sections of Glenora Place, Tarraford Way and Daruma Place	730	GS/Gravel	14600	1	GPS
Berringa							
20	Continue to improve the quality and safety of the Rainbow Bird Trail.	-	-	-	2000	2	GPS Com Committee
21	Provide more information and maps about the trail.	-	-	-	See action 6	1	GPS Com Committee
22	Provide more signs and seating along the trail.	-	-	-	See action 8 See action 10	2	GPS Com Committee
Dereel							
23	Upgrade and properly maintain the Kuruc-a-ruc Trail.	-	-	-	10000 pa	1	GPS
24	Liaise with the local community to continuously improve the quality and safety of the Rainbow Bird Trail including the provision of bike racks and seats.	-	-	-	2000 pa	2	GPS Com Committee
25	Support the development of the Dereel Swamp Trail.	Around perimeter of swamp	2000	GS/Gravel	100000	2	GPS Com Committee Parks Vic
26	Investigate the feasibility of developing a path along Ferrars Rd to the centre of Dereel.	Moffetts Rd to Colac-Ballarat Rd	2500	GS/Gravel	125000	5	GPS

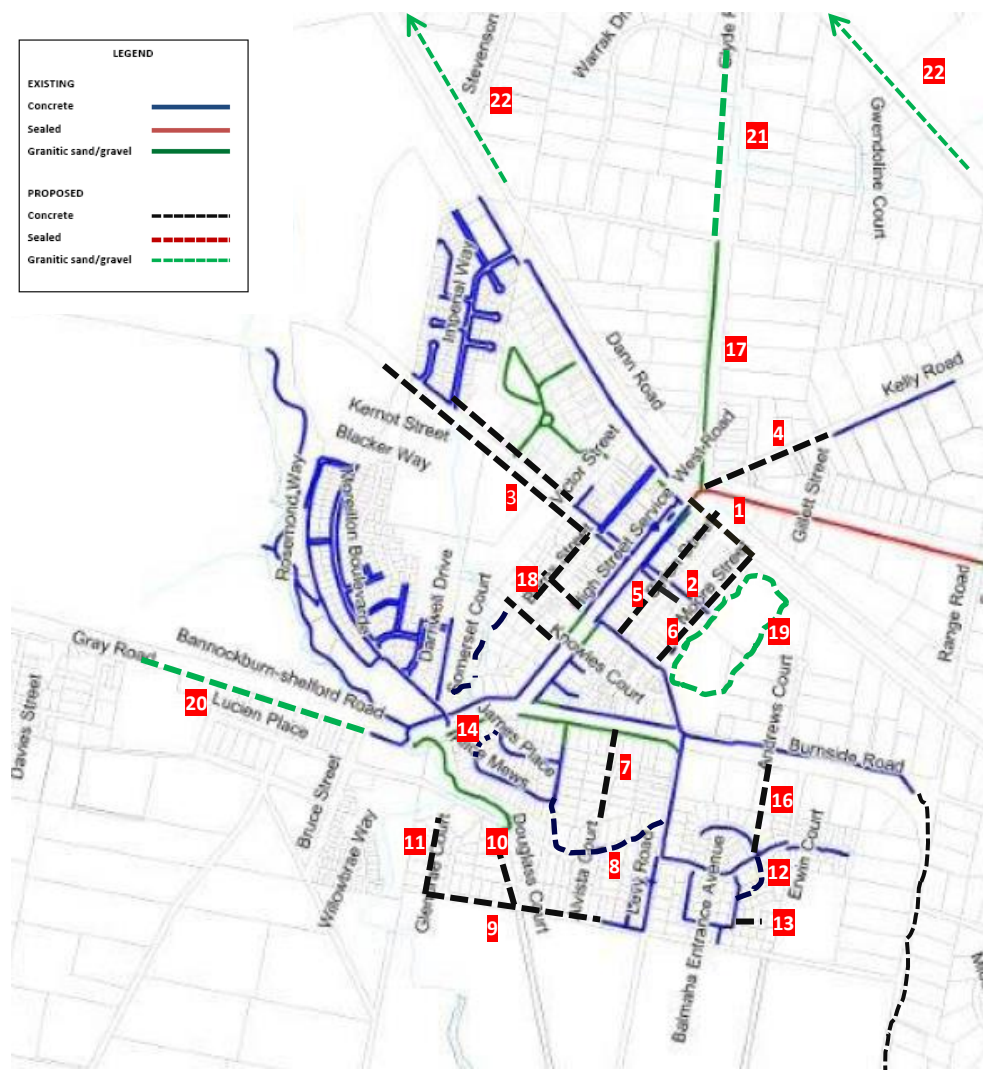
No	Action	Location	Approx. Length (m)	Surface Type	Est. cost \$	Priority Ranking	Involved Organisations
Enfield							
27	Explore the feasibility of:						
	<ul style="list-style-type: none"> Developing a trail linking Enfield and Napoleons Linking the 2 parts of Enfield with an internal trail. 	Along Colac-Ballarat Rd or other route TBD TBD	7500 350	GS/Gravel GS/Gravel	375000 17500	6 3	GPS VicRoads GPS
Grenville/Garibaldi							
28	Explore the feasibility of developing a trail between Napoleons and Grenville.	Along Buninyong-Mt Mercer Rd or the Yarrowee River	9000	GS/Gravel	450000	6	GPS VicRoads
Haddon							
29	Improve the quality of the Ballarat-Skipton Rail Trail surface.	-	-	-	Existing budget	Ongoing	GPS
30	Provide directional/information signage to the parklands off the Ballarat-Skipton Rail Trail and the facilities they contain – toilets, family social areas, wetland areas, historic elements etc.	-	-	-	See action 8	2	GPS
31	Provide directional signage to the Haddon bicycle route.	-	-	-	See action 8	2	GPS
32	Restore the path at the front of Memorial Park.	Sago Hill Rd at front of park	230	GS/Gravel	4600	1	GPS
33	Develop a path along Haddon School Rd from Blackberry Rd to the existing path in central Haddon.	Blackberry Rd to the existing path in central Haddon	2400	GS/Gravel	120000	4	GPS
Illabarook/Rokewood Junction/Cape Clear							
34	Restore the path along Pitfield Rd in Cape Clear.	Existing path to school	410	GS/Gravel	8200	1	GPS
Inverleigh							
35	Reprint and widely distribute the 'Inverleigh Heritage Walk' trail brochure.	-	-	-	See action 6	2	GPS Com Committee
36	Develop the following:						
	– A path along Inverleigh-Winchelsea Rd	Park St to McCullum St	140	Concrete	18200	2	GPS
	– A path along Mercer St	East St to Railway St	900	Concrete	117000	2	GPS
	– A path along Park St	Saleyard Rd to Railway St	900	Concrete	117000	2	GPS
	– A path along Napier St	East St to Railway St	900	Concrete	117000	2	GPS
	– A new path along Railway St	Hamilton Hwy to Park St	450	Concrete	58500	2	GPS
	– A new path along the Hwy connecting the Peel Estate to the town	From Peel Rd to Cambridge St	620	GS/Gravel	31000	2	GPS
	– A connecting path along Faulkner Rd between the end of the existing path and Common Rd	Existing path to Common Rd	230	Concrete	29900	4	GPS
	– A walking trail from the golf course to Teesdale (this track is already run by horses but would be good to formalise and encourage for walkers)	Golf Course to Teesdale	5000	GS/Gravel	250000	6	GPS
	– A new path to the cemetery along the railway line.	Railway St to Cemetery	1100	GS/Gravel	55000	5	GPS
37	Restore the granitic sand path along Common Rd.	Sections along Common Rd	200	GS/Gravel	10000	1	GPS
Lethbridge							
38	Restore the sand path in the Lake Reserve and along Brunel St.	Around lake reserve and Brunel St to Quarry rd	1100	GS/Gravel	22000	1	GPS Com Committee

No	Action	Location	Approx. Length (m)	Surface Type	Est. cost \$	Priority Ranking	Involved Organisations
39	Develop a path network in the recreation reserve which links the community facilities in the reserve.	In the recreation reserve	300	GS/Gravel	15000	3	GPS Com Committee
40	Develop the following paths:						
	– A path linking the lake to the recreation reserve and then the school - along Bruce's Creek or Brunel St and then through the reserve.	Reserve to school along Creek or Brunel St	420	GS/Gravel	21000	2	GPS
	– Along south side of Russell St	Railway crossing to the playground	340	Concrete	44200	2	GPS
	– Along Stephenson St	Cubitt St to Russell St	230	Concrete	29900	2	GPS
	– Along Cubitt St	Ackland Rd to Brunel St	250	Concrete	32500	3	GPS
	– Along Noyes Rd	O'Connor Rd to Russell	1200	GS/Gravel	60000	4	GPS
	– Along Tall Tree Rd from bend to railway line	Bend to railway line	320	GS/Gravel	16000	4	GPS
Linton							
41	Maintain the Ballarat-Skipton Rail Trail at a high standard.	-	-	-	Existing budget	Ongoing	GPS
42	Provide directional signage to the bush trails in Linton.	-	-	-	See action 8	2	GPS
43	Develop a path on the highway near Linton-Niarighil Rd turnoff.	Hwy near Linton-Niarighil turnoff	100	GS/Gravel	5000	3	GPS
44	Seal the gravel path in Clyde St.	Existing gravel path	210	Asphalt	15750	2	GPS
45	Restore the path in Adair St.	School boundary to Clyde St	150	Asphalt	4500	1	GPS
46	Develop a new path along York St.	Grant St to Clyde St	210	Asphalt	15750	3	GPS
47	Develop a new path along Surrey St.	Grant St to Clyde St	210	Asphalt	15750	3	GPS
48	Explore the potential for developing loop trails around the town which connect to the Ballarat to Skipton Rail trail.	TBD	TBD	GS/Gravel	TBD	6	GPS
49	Explore the potential for developing connecting trails to Happy Valley, Devils Kitchen and Mt Erip.	TBD	TBD	GS/Gravel	TBD	6	GPS
Maude/Steiglitz							
50	Restore the path on Steiglitz Rd between Pedrisat Rd and Maude Recreation Reserve (virtually a new path).	Pedrisat Rd to northern end of Recreation Reserve	960	GS/Gravel	48000	1	GPS
51	Develop paths along Steiglitz Rd in the following locations:						
	– Maude Recreation Reserve to Milvi Court	Northern end of Recreation Reserve to Milvi Crt	410	GS/Gravel	20500	1	GPS
	– Plough Corner to Pedrisat Rd	Plough Corner to Pedrisat Rd	2100	GS/Gravel	105000	4	GPS
	– Milvi Court to 5 mile corner	Milvi Court to 5 mile corner	1560	GS/Gravel	78000	4	GPS
	– 5 mile corner to the Steiglitz township.	5 mile corner to Steiglitz township.	7800	GS/Gravel	390000	6	GPS
Meredith							
52	Seal the path along Midland Hwy at the front of the school.	Midland Hwy at front of school	120	Concrete	12000	1	GPS
53	Establish a path network in Pioneer Park and developing the fitness circuit.	Around park and reserve	1000	GS/Gravel	40000	5	GPS Com Committee
54	Upgrade the path along Midland Hwy from Lawler St to Russell St.	Lawler St to Russell St	125	Concrete	16870	1	GPS
55	Restore the existing Coolebarghurk Creek trail.	Staughton St to Sutherland	600	GS/Gravel	12000	1	GPS

No	Action	Location	Approx. Length (m)	Surface Type	Est. cost \$	Priority Ranking	Involved Organisations
56	Develop the following paths/trails:						
	– A path along Mercer St	McLeod St to Hwy	450	Concrete	58500	3	GPS
	– A path along Russell St	McLeod St to Hwy	450	Concrete	58500	3	GPS
	– A path along Lawler St	McLeod St to Hwy	450	Concrete	58500	3	GPS
	– A path along Wilson St	McLeod St to Police Paddocks	840	Concrete	109200	1	GPS
	– A path along Read St	Hwy to Lawler St	400	Concrete	52000	2	GPS
	– A trail network within the Police Paddocks	In Police Paddocks Reserve	300	GS/Gravel	19500	6	GPS BEN Com Committee
	– Continuation of the Coolebarghurk Creek trail to the north	Sutherland St to Creamery Rd	900	GS/Gravel	45000	4	GPS
	– Connection of the extended Coolebarghurk Creek trail to Pioneer Park	Along McLeod from Hwy to Wilson St	670	GS/Gravel	33500	5	GPS
	– Path along Champ St from the connection between Pioneer Park and Police Paddocks to the Coolebarghurk Creek trail.	Champ St to Staughton St/ Coolebarghurk Creek trail	120	GS/Gravel	6000	5	GPS
Napoleons							
57	Explore the feasibility of developing a trail linking Enfield and Napoleons.	TBD	7500	GS/Gravel	375000	6	GPS VicRoads
58	Explore the feasibility of developing a trail along the Yarrowee River to connect to Ballarat and Grenville/Garibaldi.	Yarrowee River	12000	GS/Gravel	600000	6	GPS
59	Restore the path between Wells Rd and Nine Mile Rd.	Wells Rd to Nine Mile Rd	500	Asphalt	15000	1	GPS
60	Develop a path along west side of Colac-Ballarat Rd	School to Scotchman's Lead Rd	850	Asphalt	63750	1	GPS VicRoads
Rokewood/Corindhap							
61	Upgrade and properly maintain the Kuruc-a-ruc Trail.	-	-	-	See action 23	1	GPS
62	Develop the following paths:						
	– A path from the school along Aitchison St and Gipps St to the service station	School along Aitchison St and Gipps St to the service station	340	Concrete	44200	1	GPS
	– A path along the rest of Aitchison St	Gipps St to McMillan Rd	230	Concrete	29900	3	GPS
	– Paths along McMillan and Wilson St to the creek.	From Hwy to creek	620	Concrete GS/Gravel	64800	4	GPS
63	Restore the path along Hardie St.	Existing path on Hardie St	120	GS/Gravel	2400	1	GPS
Ross Creek/Smythes Creek							
64	Improve the quality and safety of and provide better promotional literature for the Boden's Water Race Trail.	-	-	-	2000	1	GPS
65	Explore the feasibility of developing a horse riding trail in Ross Creek/Smythes Creek area. Develop the trail if feasible	TBD	TBD	TBD	TBD	2	GPS
Shelford							
66	Develop a trail along the Leigh River between North and South Sts.	North St to South St	1400	GS/Gravel	70000	5	GPS
67	Give consideration to developing a walking/cycling trail between Shelford and Teesdale.	Shelford to Teesdale	6000	GS/Gravel	300000	6	GPS VicRoads

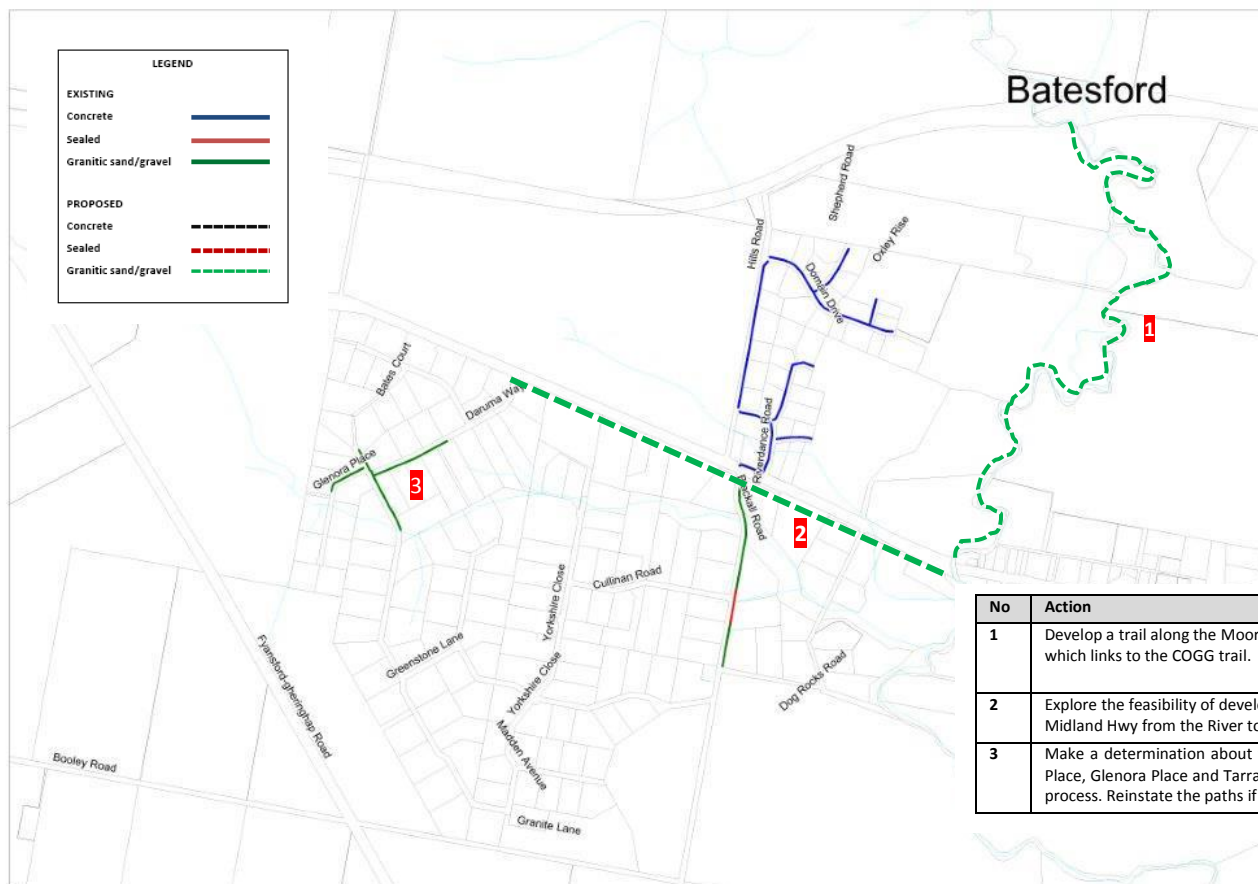
No	Action	Location	Approx. Length (m)	Surface Type	Est. cost \$	Priority Ranking	Involved Organisations
68	Restore the path on the south side of Shelford-Bannockburn Rd.	School to Bridge	270	Asphalt	20250	1	GPS
Smythesdale/Scarsdale							
69	Provide directional signage through the Woody Yaloak Recreation Reserve to help users of the Rail Trail better navigate their way through the reserve.	-	-	-	500	1	GPS
70	Develop interconnecting paths from the trail to nearby toilets and rest and camping areas.	Various	500	GS/Gravel	2000	3	GPS
71	Explore the feasibility of developing trails off the Ballarat Skipton Trail through the nearby forests and plantations and the Devils Kitchen area.	TBD	TBD	TBD	TBD	5	GPS
72	Restore the paths along: <ul style="list-style-type: none"> Becker St in Smythesdale Pitfield Rd in Scarsdale. 	School boundary to Loader St Hwy to School	75 2240	Asphalt Asphalt GS/Gravel	5625 55800	1 1	GPS GPS
73	Provide additional signage warning of road crossings along the Ballarat-Skipton Rail Trail.	-	-	-	1000	1	GPS VicRoads
74	Give consideration to developing a path which links the equestrian centre to the Smythesdale Township and then to the Roadhouse.	Equestrian centre to roadhouse	1800	GS/Gravel	90000	6	GPS VicRoads
Teesdale							
75	Advocate for the provision of a pedestrian crossing on the Shelford Bannockburn Road at the preschool near Panticks Rd.	-	-	-	500	1	GPS VicRoads
76	Regularly mow the path beside Native Hut Creek from Turtle Bend Reserve along Panticks Road.	-	-	-	Existing budget	Ongoing	GPS
77	Provide a foot/bicycle crossing at the north end of Sutherland St connecting the existing path in Sutherland St to the proposed mown trail in Panticks Rd.	River at northern end of Sutherland Rd	200	GS/Gravel	10000	5	GPS
78	Give consideration to developing the following paths/trails: <ul style="list-style-type: none"> A walking/cycling trail between Bannockburn and Teesdale A trail connecting Teesdale town centre to the Inverleigh Flora and Fauna Reserve A path linking Turtle Bend Park to the hall and on to Chinaman's Lagoon A trail along Lethbridge Rd from Main Rd to Russell Rd. 	Bannockburn to Teesdale Teesdale town centre to the Inverleigh Flora and Fauna Reserve Turtle Bend Park to hall and on to Chinaman's Lagoon Main Rd to Russell Rd	9000 2500 610 310	GS/Gravel GS/Gravel GS/Gravel GS/Gravel	450000 125000 30500 15500	6 6 4 6	GPS VicRoads GPS GPS

Map 1 – Action Plan, Paths and Trails: Bannockburn



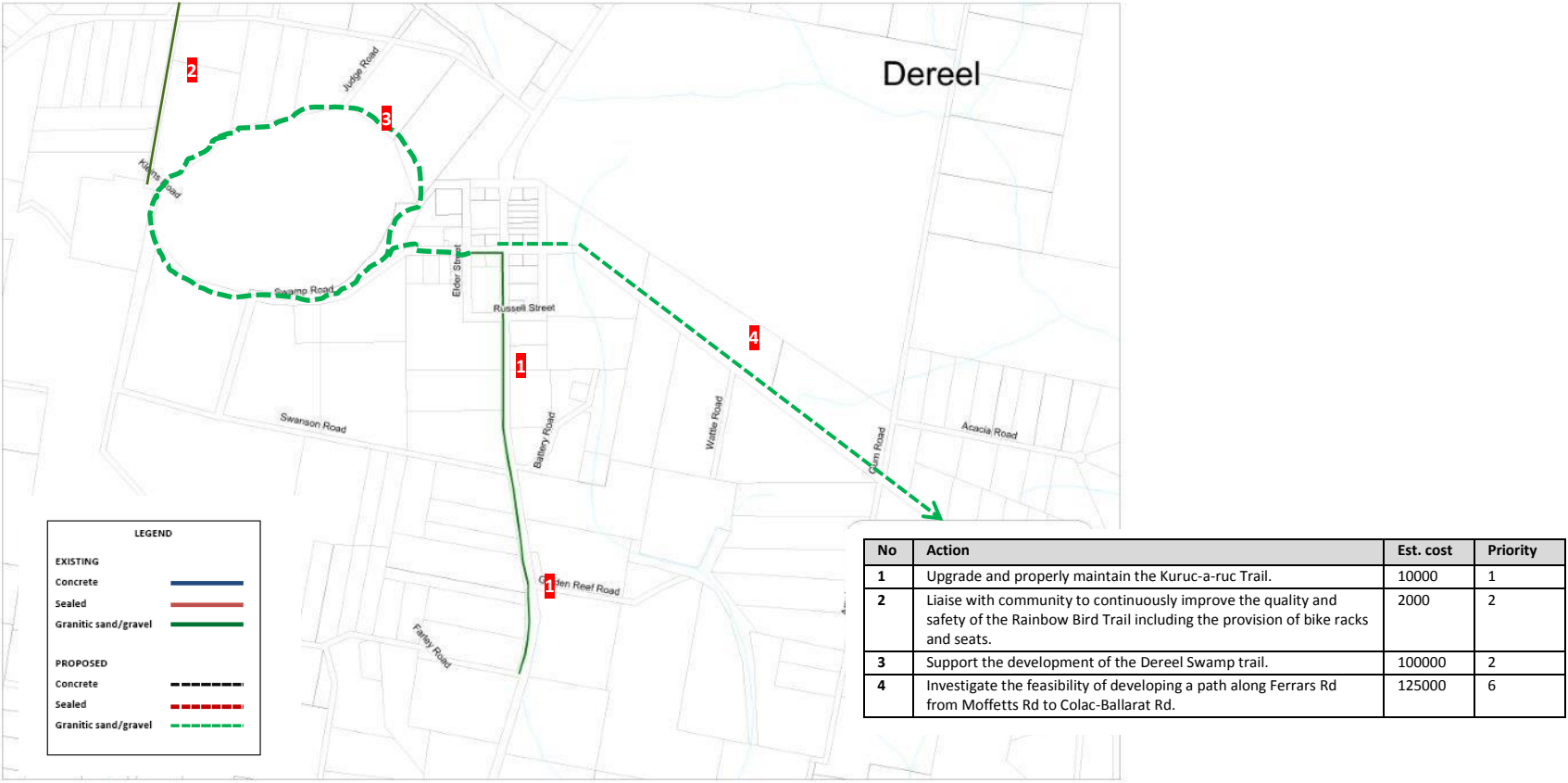
No	Action	Est. cost	Priority
1	Construct path along McPhillips Rd from High St to Moore St.	33800	2
2	Construct path along north side of Milton St from Byron St to Moore St.	16900	2
3	Construct paths along north and south sides of Milton St from Burns St to Recreation Centre.	169000	1
4	Construct path along Kelly Rd from Clyde Rd to existing path.	75465	2
5	Construct path along Byron St from McPhillips Rd to Pope St.	59800	3
6	Construct path along Moore St from McPhillips Rd to Pope St.	57200	3
7	Construct path along full length of Elrae Crt.	33800	3
8	Construct path along Earl Crescent from Alice Mews to Levy Rd.	71500	3
9	Construct path along Charlton Rd from Glenbrae Ct to path near Fenwick Fairway.	68250	3
10	Construct path along Douglas Crt from existing path to Charlton Rd.	22100	3
11	Construct path along full length of Glenbrae Crt.	39000	3
12	Construct path along full length of Edenborough Way.	26000	3
13	Construct path along full length of Camden Mews.	14300	3
14	Construct path along Alice Mews (western end to James Place).	11050	3
15	Construct path along Burnside Ave from end of existing path to Glen Avon Drive	156000	2
16	Construct path along Dalcrain Dve from existing pathway to Burnside Rd	33800	
17	Restore the granitic sand path along Clyde Rd between Shelford – Bannockburn Rd and Lowndes Rd.	15600	1
18	Explore the feasibility of developing a path network in the established residential area north west of High St/Shelford Bannockburn Rd between Milton Rd and Darriwell Drive.	169000	4
19	Explore the feasibility of developing a circuit path around or a NE-SW link through Victoria Park.	60000	5
20	Explore the feasibility of developing a trail along the Bannockburn-Shelford Rd linking the residential areas to the Business Estate.	80000	5
21	Explore the feasibility of extending the path along Clyde Rd from Lowndes Rd to Warrack Dve.	32000	6
22	Explore the feasibility of developing a trail along the railway line or the Midland Hwy to Lethbridge.	425000	6
-	Make provision for the development of a trail around the perimeter of the growth boundary of the township.	850000	As development occurs

Map 2 – Action Plan, Paths and Trails: Batesford



No	Action	Est. cost	Priority
1	Develop a trail along the Moorabool River in the Riverstone Estate which links to the COGG trail.	120000	As development occurs
2	Explore the feasibility of developing a trail through the town along the Midland Hwy from the River to Daruma Way.	125000	6
3	Make a determination about the future of the sand paths in Duruma Place, Glenora Place and Tarraford Way. Involve the community in this process. Reinstate the paths if supported by the community.	14600	1

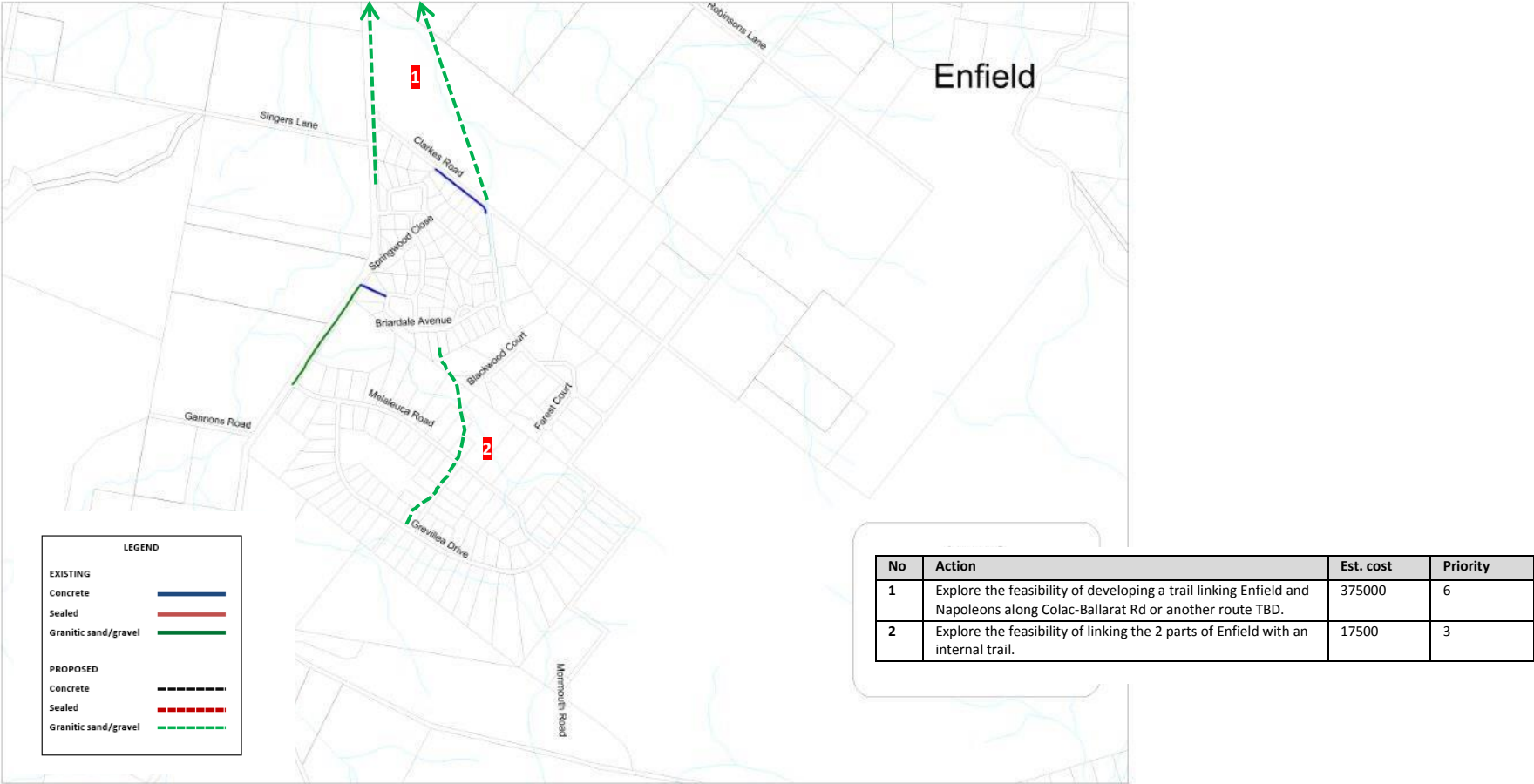
Map 3 – Action Plan, Paths and Trails: Dereel



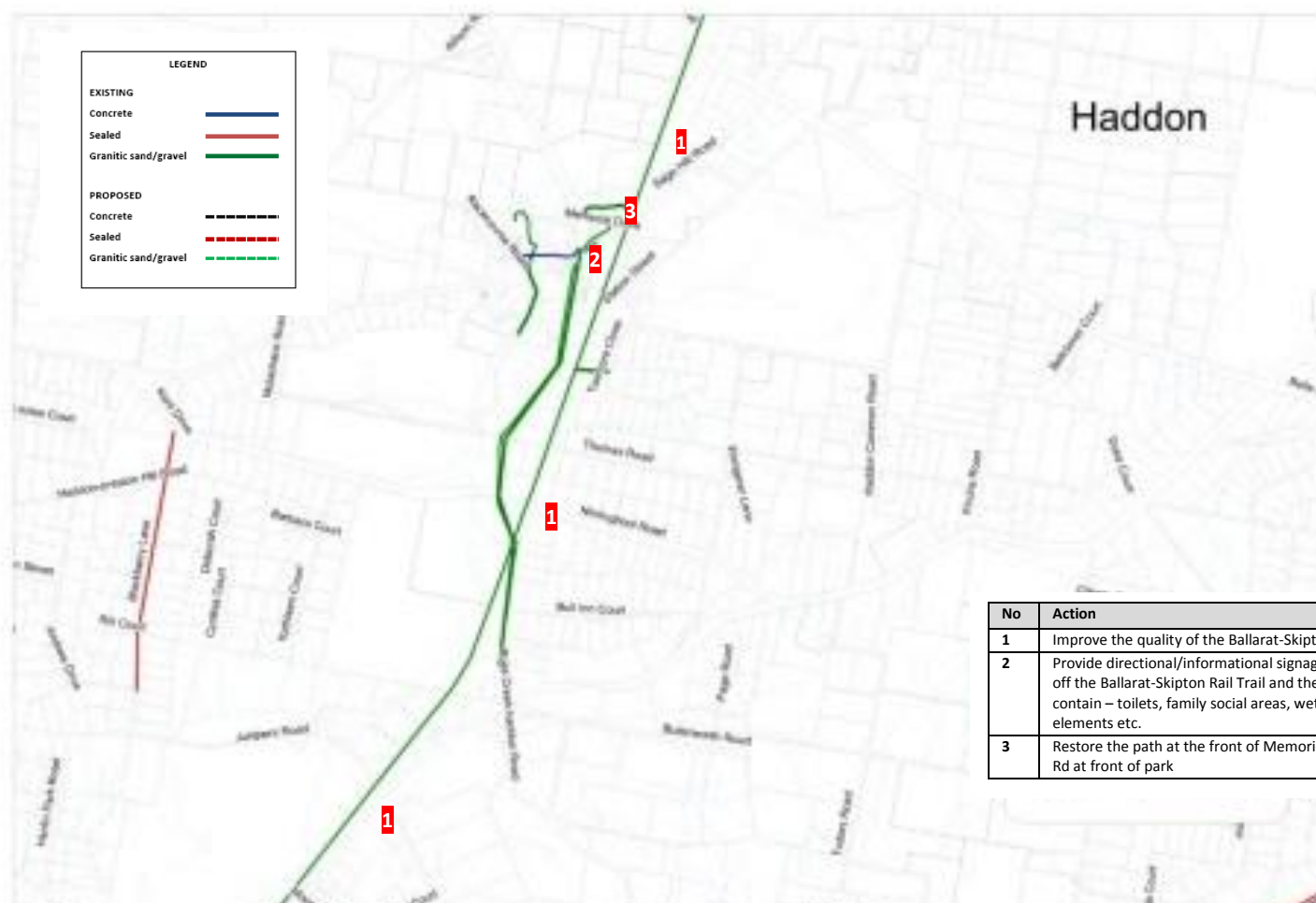
Map 4 – Action Plan, Paths and Trails: Cape Clear



Map 5 – Action Plan, Paths and Trails: Enfield

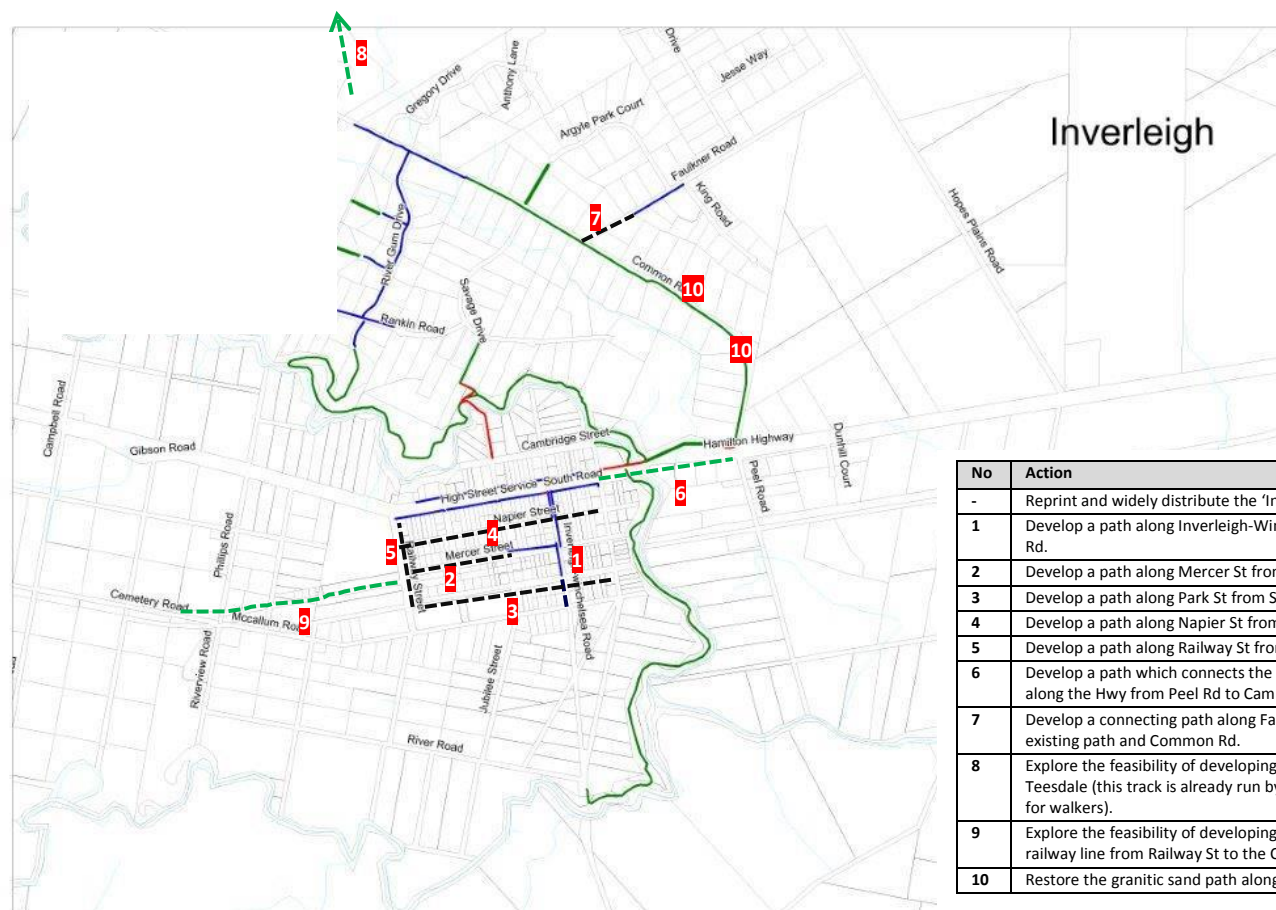


Map 6 – Action Plan, Paths and Trails: Haddon



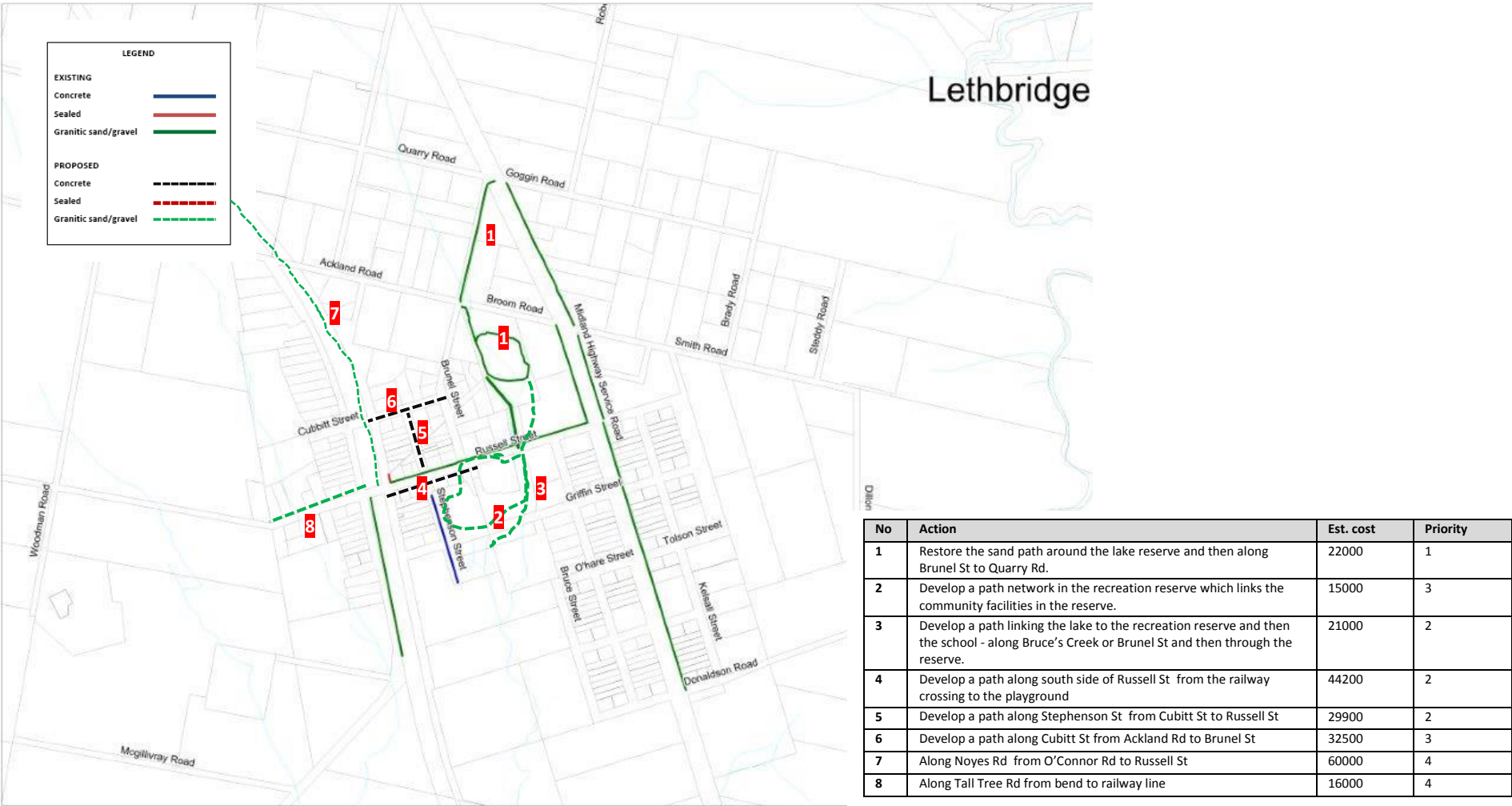
No	Action	Est. cost	Priority
1	Improve the quality of the Ballarat-Skipton Rail Trail surface.	-	Ongoing
2	Provide directional/informational signage to the parklands off the Ballarat-Skipton Rail Trail and the facilities they contain – toilets, family social areas, wetland areas, historic elements etc.	-	2
3	Restore the path at the front of Memorial Park on Sago Hill Rd at front of park	4600	1

Map 7 – Action Plan, Paths and Trails: Inverleigh

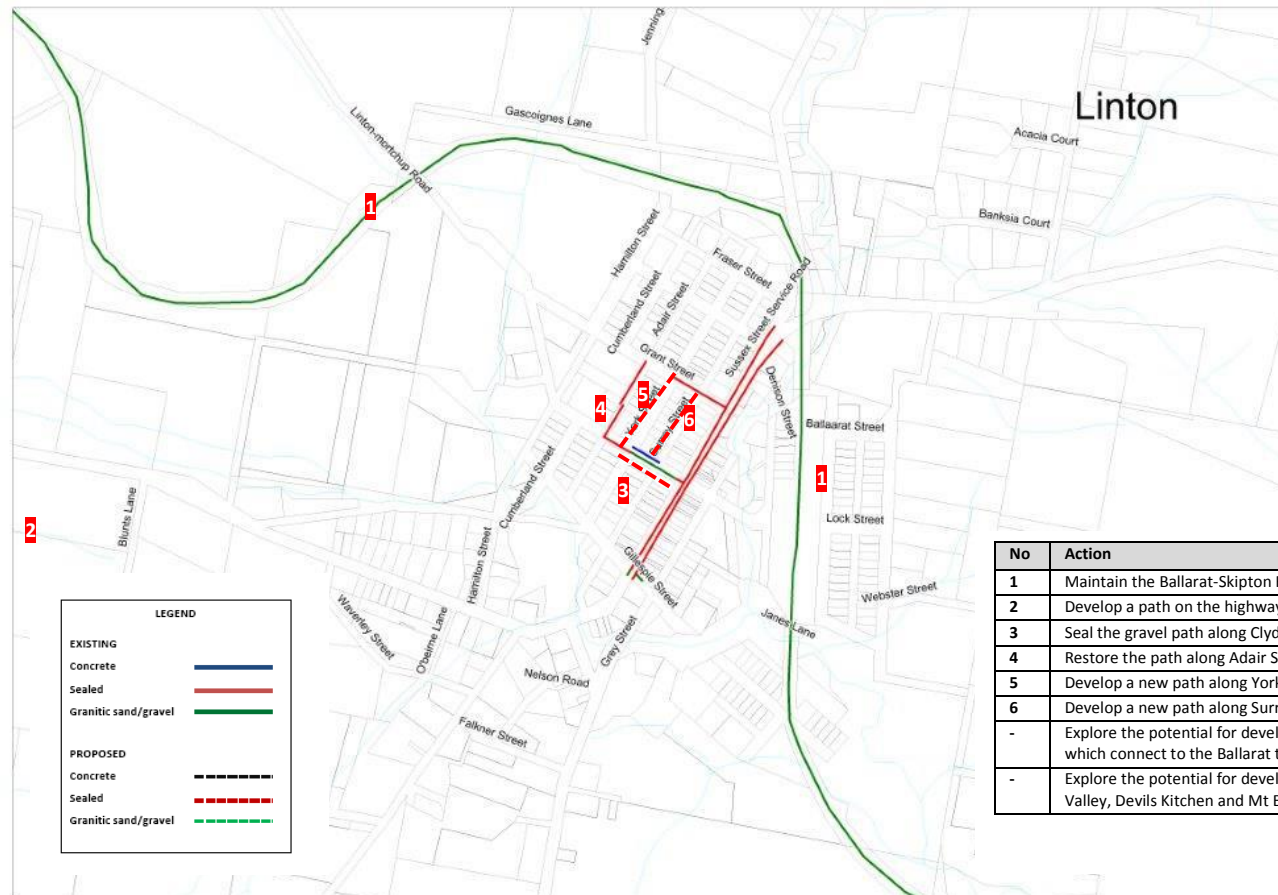


No	Action	Est. cost	Priority
-	Reprint and widely distribute the 'Inverleigh Heritage Walk' trail brochure.	-	2
1	Develop a path along Inverleigh-Winchelsea Rd from Park St to McCullum Rd.	14000	2
2	Develop a path along Mercer St from East St to Railway St.	90000	2
3	Develop a path along Park St from Saleyard Rd to Railway St.	90000	2
4	Develop a path along Napier St from East St to Railway St.	90000	2
5	Develop a path along Railway St from Hamilton Hwy to Park St.	45000	2
6	Develop a path which connects the Peel Estate to the centre of the town along the Hwy from Peel Rd to Cambridge St.	31000	2
7	Develop a connecting path along Faulkner Rd between the end of the existing path and Common Rd.	23000	4
8	Explore the feasibility of developing a walking trail from the golf course to Teesdale (this track is already run by horses but would be good to formalise for walkers).	250000	6
9	Explore the feasibility of developing a new path to the cemetery along the railway line from Railway St to the Cemetery.	55000	5
10	Restore the granitic sand path along Common Rd.	10000	1

Map 8 – Action Plan, Paths and Trails: Lethbridge

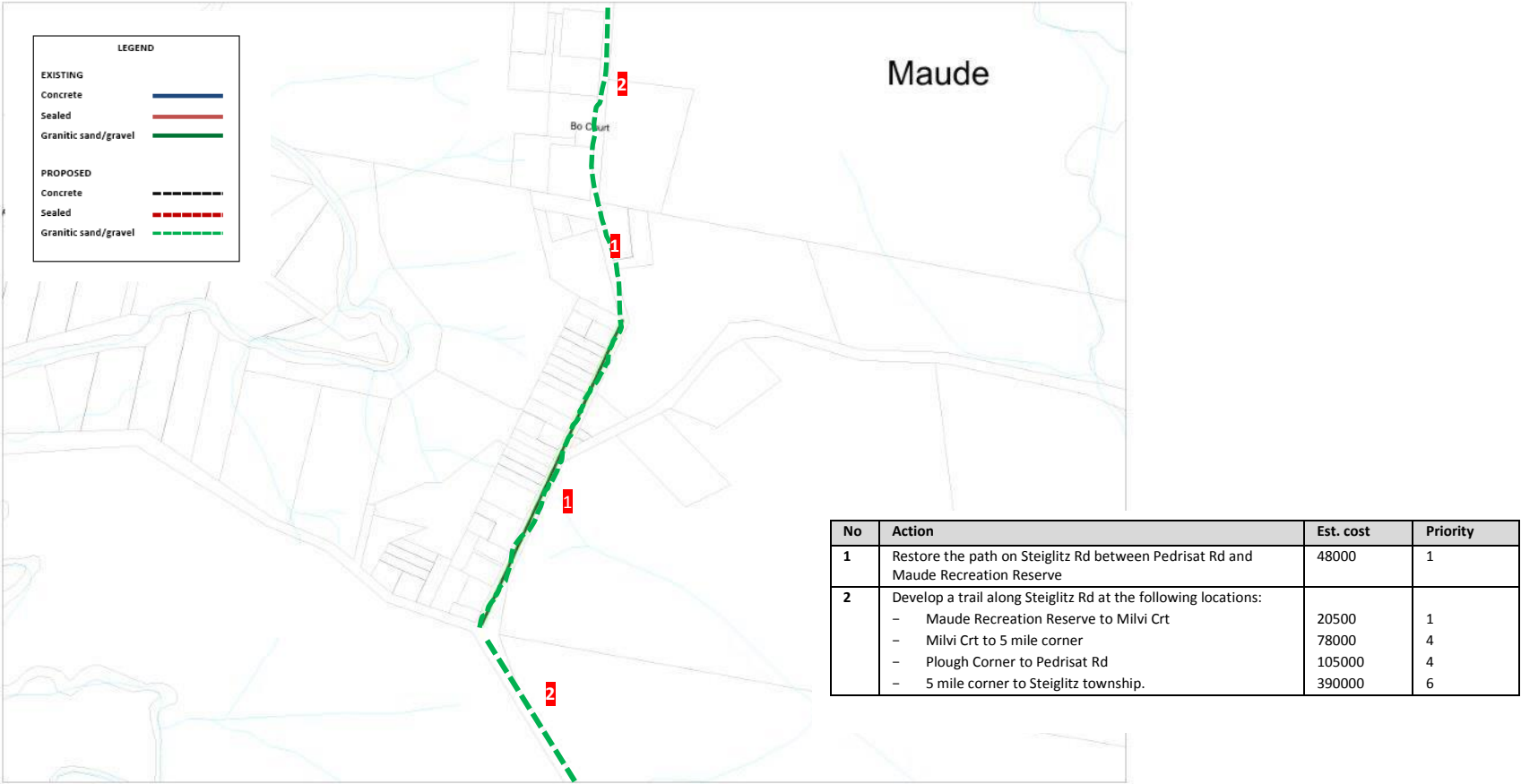


Map 9 – Action Plan, Paths and Trails: Linton

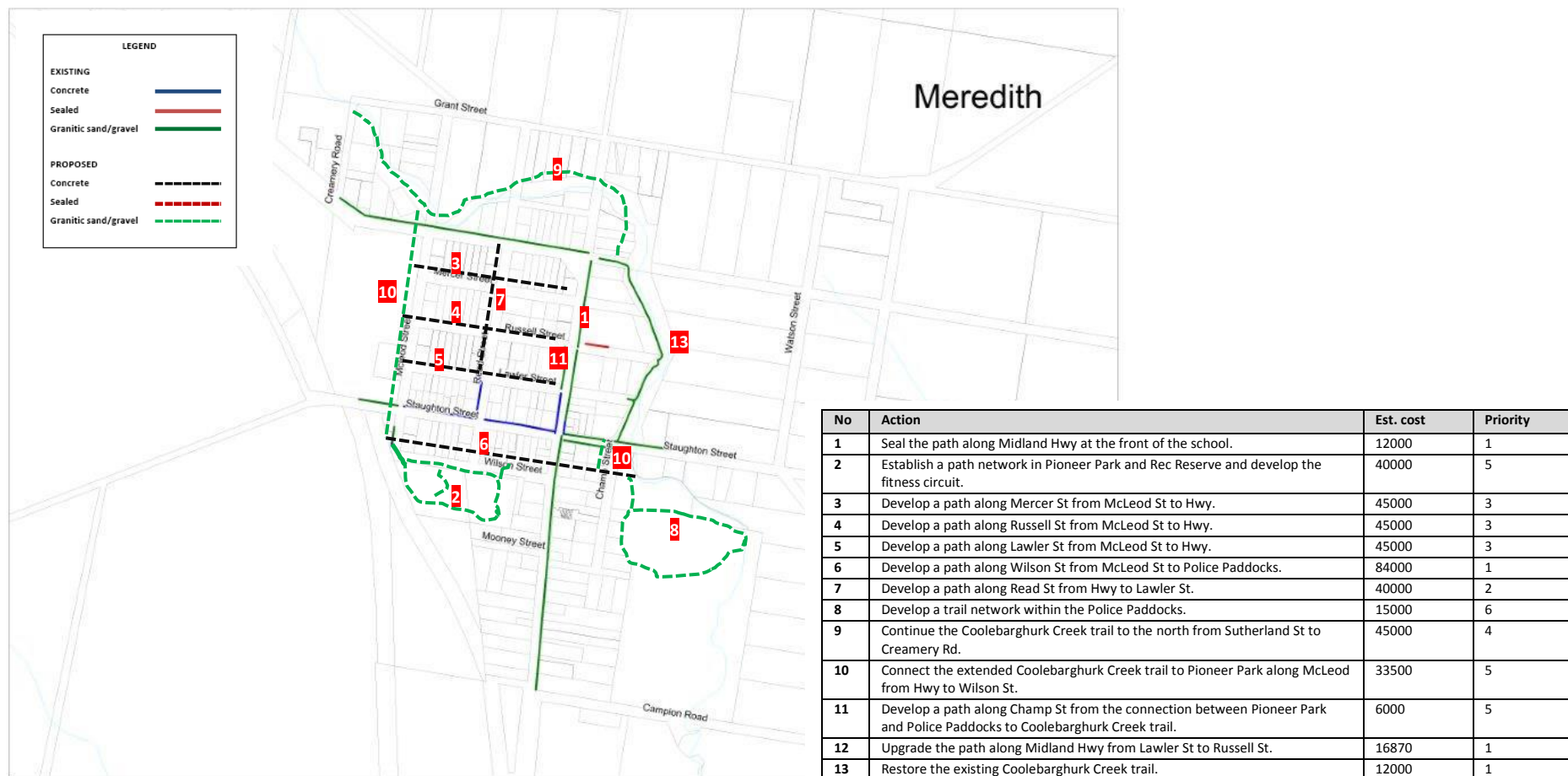


No	Action	Est. cost	Priority
1	Maintain the Ballarat-Skipton Rail Trail at a high standard.	-	Ongoing
2	Develop a path on the highway near Linton-Niarighil Rd turnoff.	5000	3
3	Seal the gravel path along Clyde St.	15750	1
4	Restore the path along Adair St from school boundary to Clyde St.	4500	1
5	Develop a new path along York St from Grant St to Clyde St.	15750	3
6	Develop a new path along Surrey St from Grant St to Clyde St.	15750	3
-	Explore the potential for developing loop trails around the town which connect to the Ballarat to Skipton Rail trail at locations TBD.	TBD	6
-	Explore the potential for developing connecting trails to Happy Valley, Devils Kitchen and Mt Erip.	TBD	6

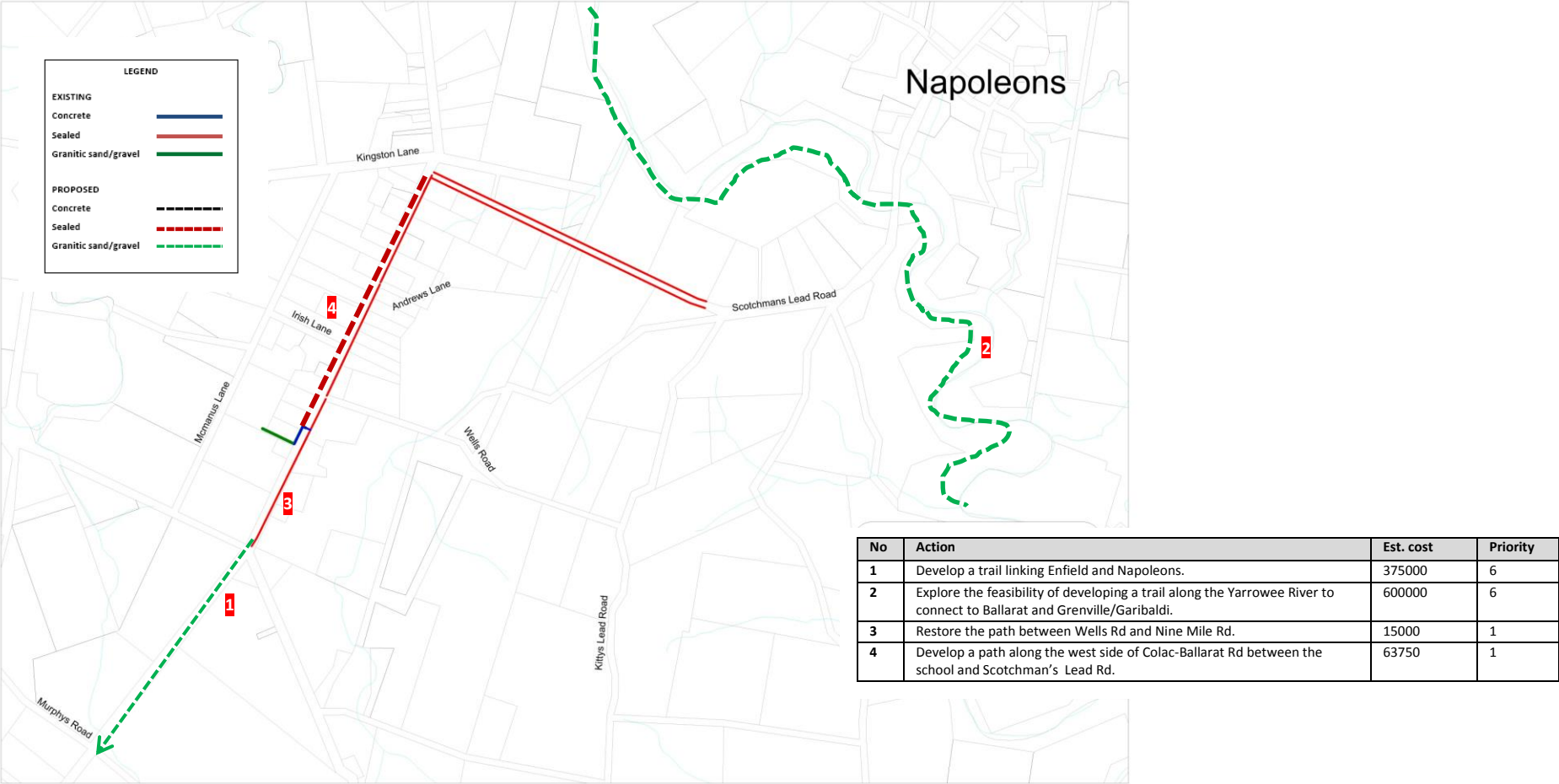
Map 10 – Action Plan, Paths and Trails: Maude



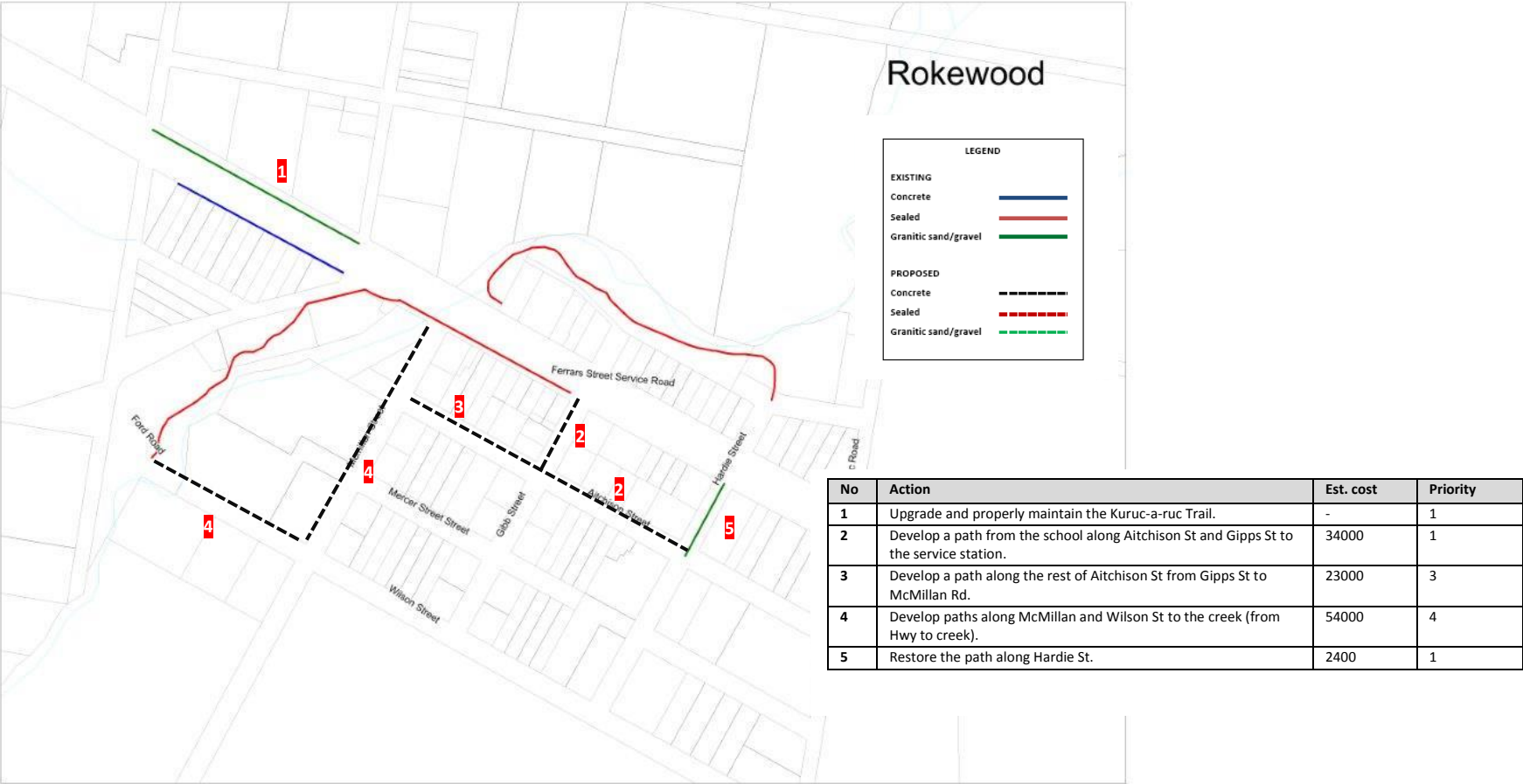
Map 11 – Action Plan, Paths and Trails: Meredith



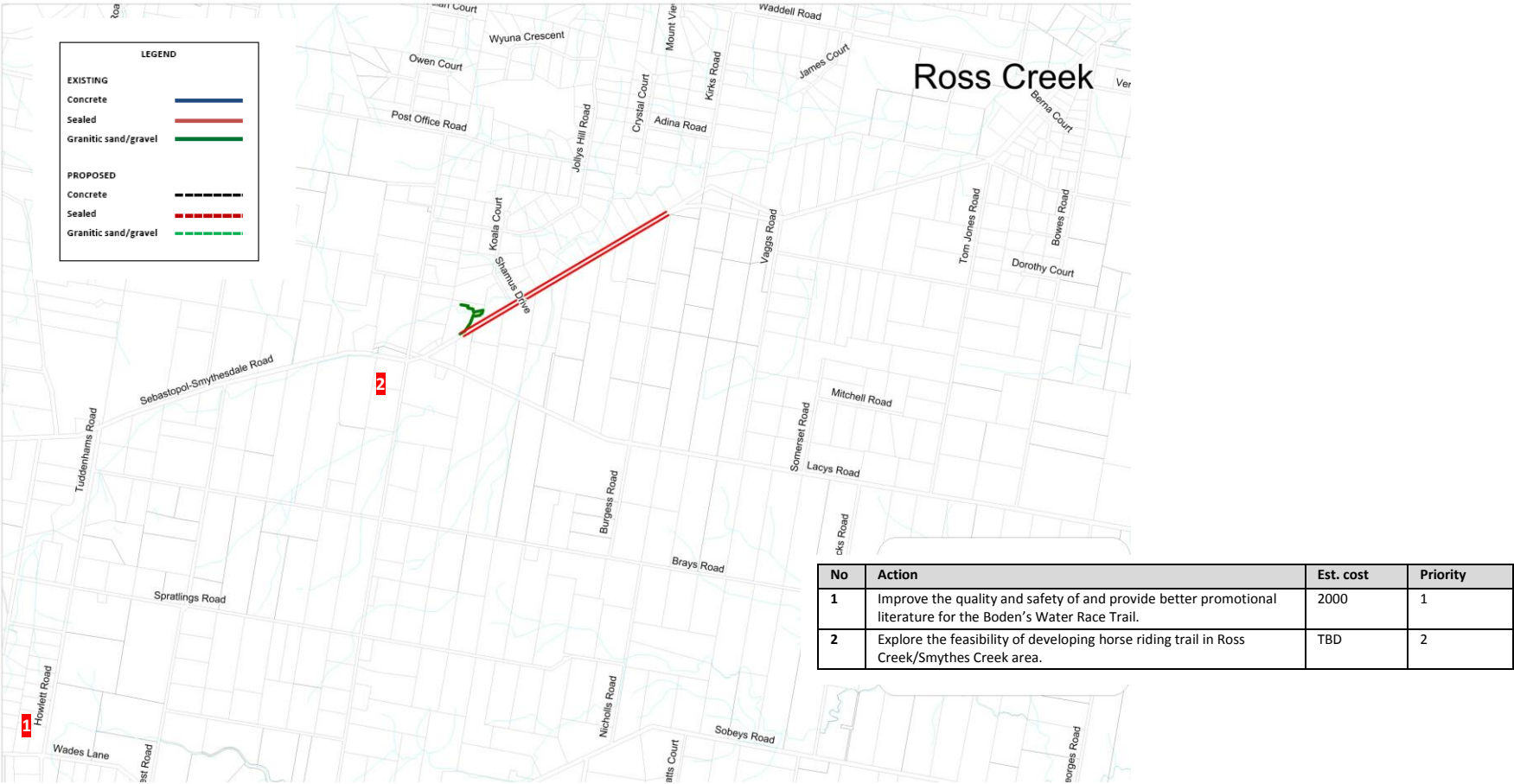
Map 12 – Action Plan, Paths and Trails: Napoleons



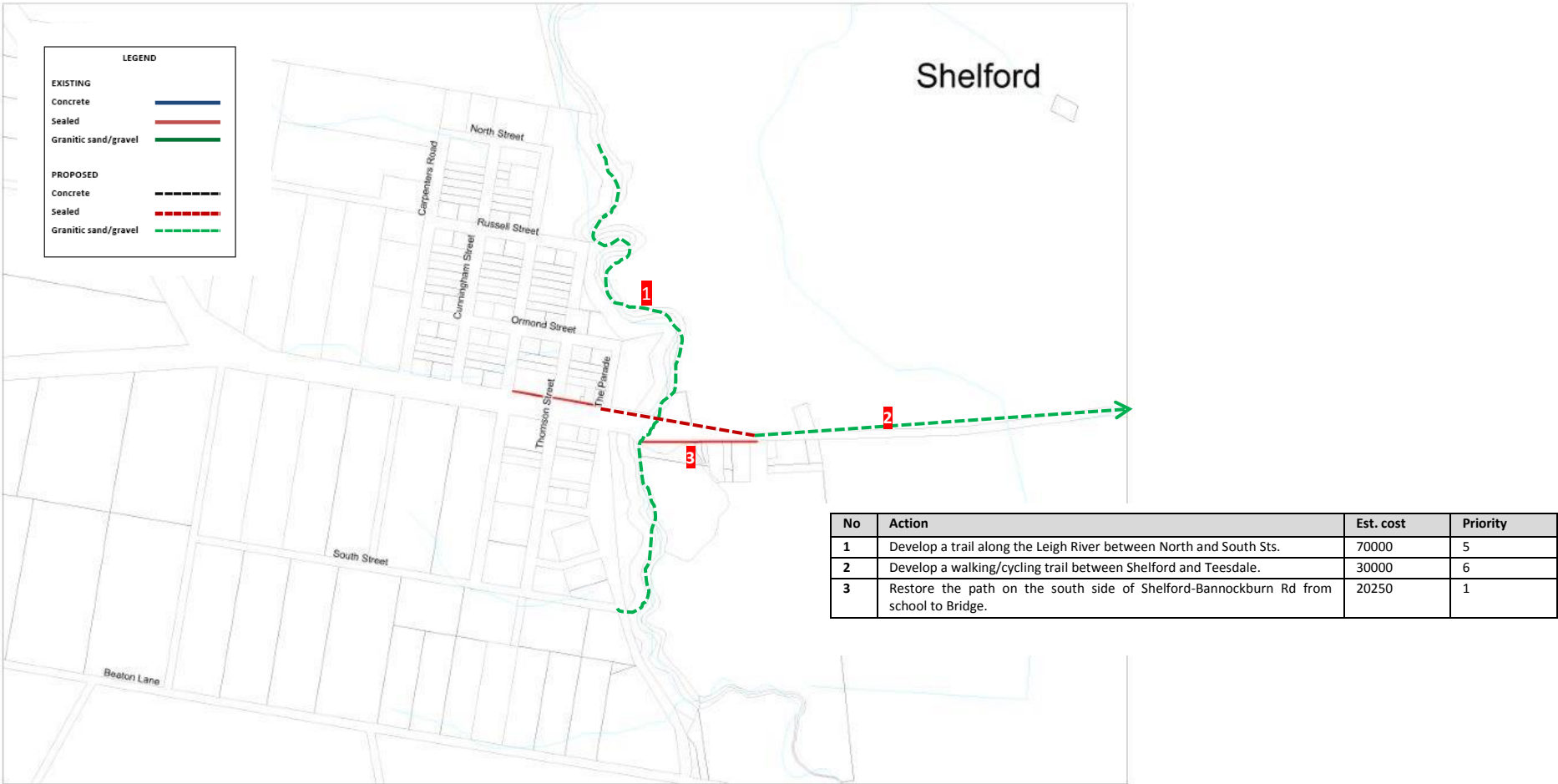
Map 13 – Action Plan, Paths and Trails: Rokewood



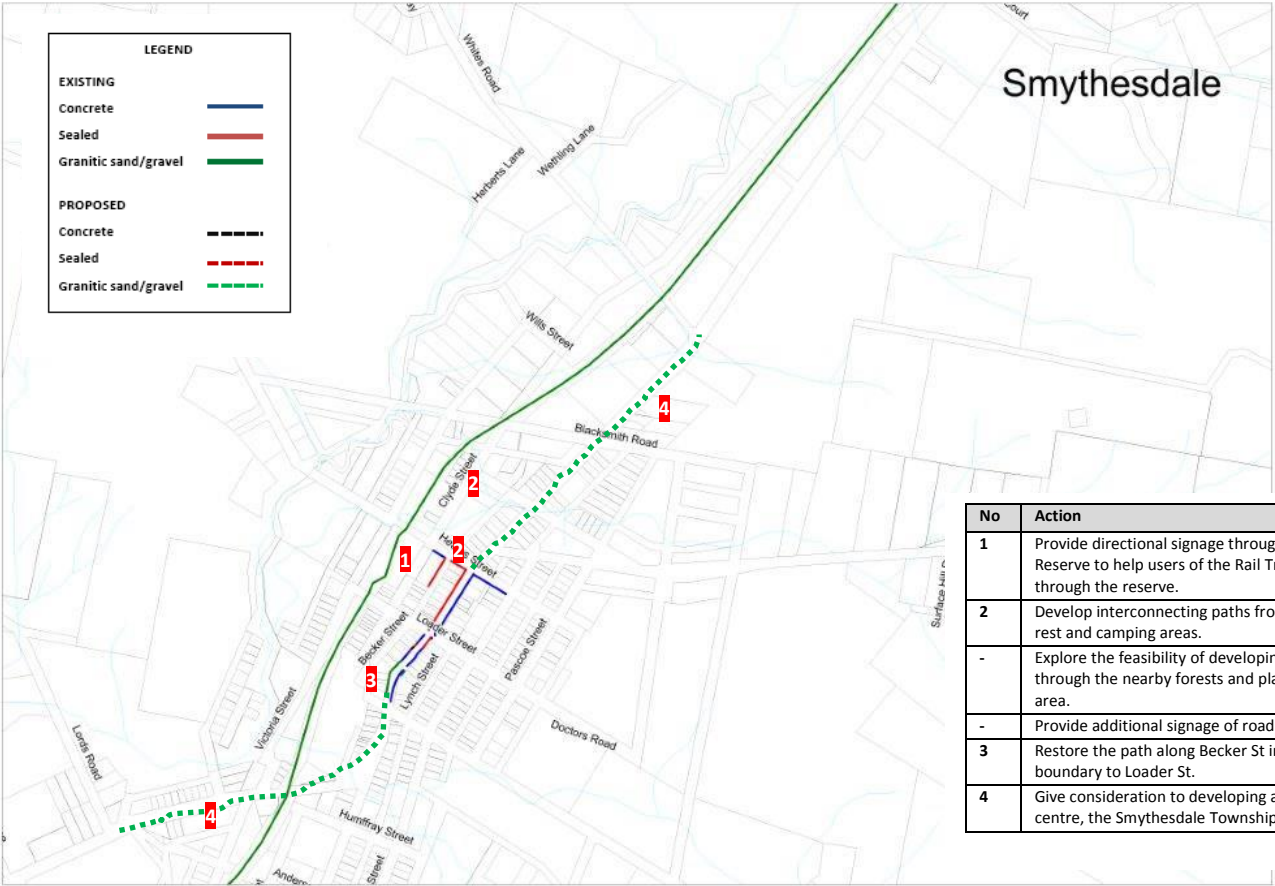
Map 14 – Action Plan, Paths and Trails: Ross Creek



Map 15 – Action Plan, Paths and Trails: Shelford

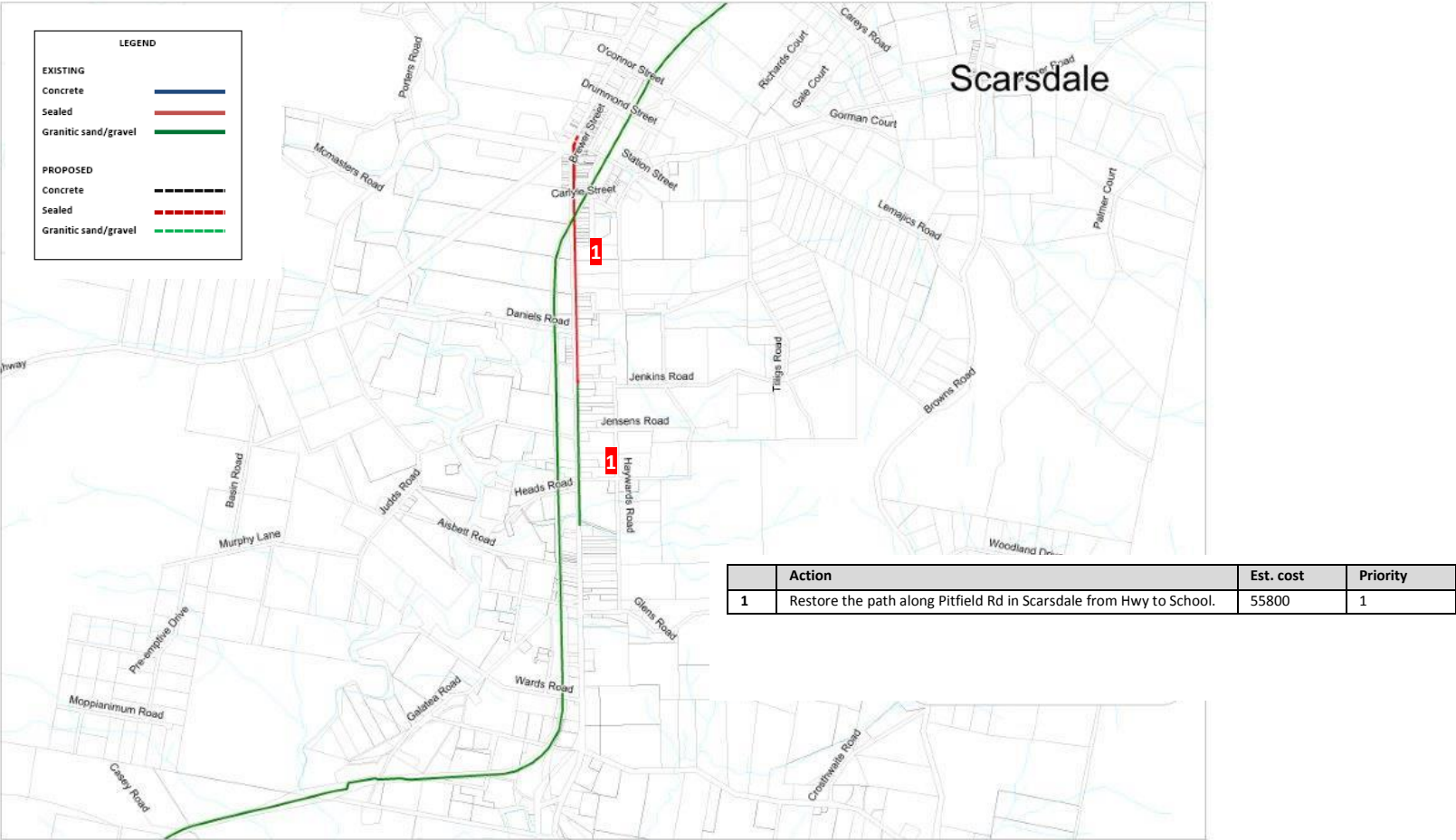


Map 16 – Action Plan, Paths and Trails: Smythesdale

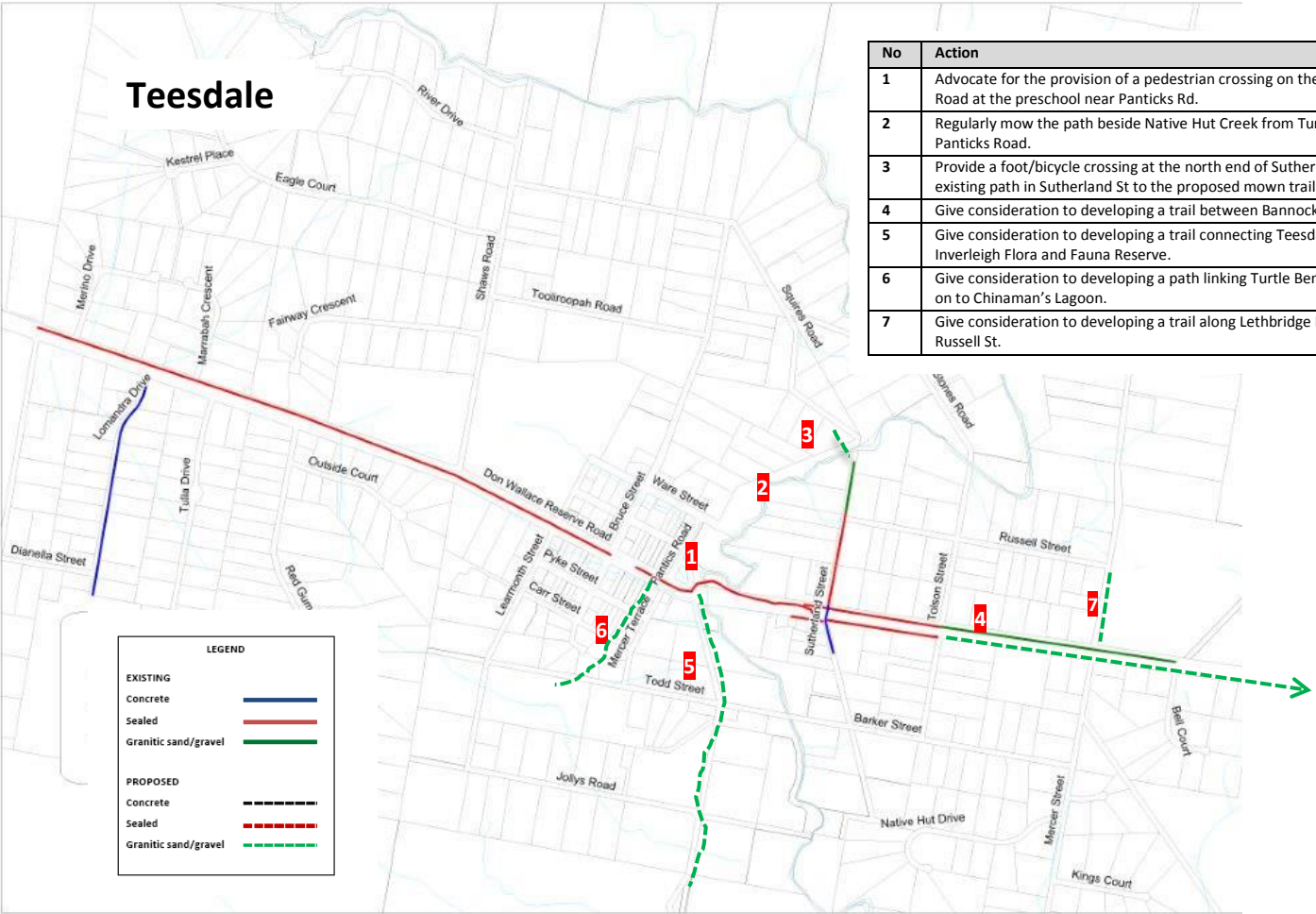


No	Action	Est. cost	Priority
1	Provide directional signage through the Woady Yaloak Recreation Reserve to help users of the Rail Trail better navigate their way through the reserve.	500	1
2	Develop interconnecting paths from the trail to nearby toilets and rest and camping areas.	2000	3
-	Explore the feasibility of developing trails off the Ballarat Sipton Trail through the nearby forests and plantations and the Devils Kitchen area.	TBD	5
-	Provide additional signage of road crossings.	1000	1
3	Restore the path along Becker St in Smythesdale from school boundary to Loader St.	5625	1
4	Give consideration to developing a trail which links the equestrian centre, the Smythesdale Township and the Roadhouse	90000	6

Map 17 – Action Plan, Paths and Trails: Scarsdale



Map 18 – Action Plan, Paths and Trails: Teesdale



APPENDICES

Appendix A – Priority Rankings: New paths/trails

Weighting system - Score out of 12

Address safety – Up to 5

Connecting to community facility/town centre/business area – Up to 3

Connect to or complete exiting path network – Up to 2

Create circuit path -1

Trail along waterway or other feature – 1

Ranking

1. Overall score of 7+
2. Overall score of 6
3. Overall score of 5
4. Overall score of 4
5. Overall score of 3
6. Overall score of 1-2

No	Action	Location	Address safety	Connect to community facility/town centre/business area	Connect/complete existing path/trail network	Create circuit path	Trail along waterway/other feature	Total	Priority
		Weighting	5	3	2	1	1	12	
Bannockburn									
1	Construct sealed paths at the following locations:								
	– Along McPhillips Rd	High St to Moore St	1	3	2	-	-	6	2
	– Along north side of Milton St	Byron St to Moore St	1	3	2	-	-	6	2
	– Along north and south side of Milton St	Burn St to Recreation Centre	3	3	2	-	-	8	1
	– Along Kelly Rd Clyde Rd	Clyde Rd to existing path	1	3	2	-	-	6	2
	– Along Byron Rd	McPhillips Rd to Pope St	1	2	2	-	-	5	3
	– Along Moore St	McPhillips Rd to Pope St	1	2	2	-	-	5	3
	– Along Elrae Crt	Full length	1	2	2	-	-	5	3
	– Along Earl Crescent	Alice Mews to Levy Rd	1	2	2	-	-	5	3
	– Along Charlton	Glenbrae Ct to path near Fenwick Fairway	1	2	2	-	-	5	3
	– Along Douglas Crt	Existing path to Charlton Rd	1	2	2	-	-	5	3
	– Along Glenbrae Crt	Full length	1	2	2	-	-	5	3
	– Along Edenborough Way	Full length	1	2	2	-	-	5	3
	– Along Camden Mews	Full length	1	2	2	-	-	5	3
	– Along Alice Mews	Western end to James Place	2	2	2	-	-	5	3
	– Along Burnside Rd	Existing path to Glen Avon Drive	1	3	2	-	-	6	2
	– Along Dalcruin Dve	Existing path to Burnside Rd	3	2	2	-	-	7	1
2	Explore the feasibility of developing:								
	– A path network in the established residential area north west of High St/Shelford Bannockburn Rd between Milton Rd and Darriwell Drive	Somerset Crt, Burns St, Sandhurst Crt, Piloud St	-	2	2	-	-	4	4
	– A circuit path around or a NE-SW link through Victoria Park	Around perimeter of reserve	-	2	-	1	-	3	5
	– A trail along the Bannockburn-Shelford Rd linking the residential areas to the Business Estate.	Bruce's Creek to Holder Rd	-	3	-	-	-	3	5
	Explore the feasibility of extending the path along Clyde Rd to Warrak Drive.	Lowndes Rd to Warrack Dve	-	1	1	-	-	2	6
Batesford									
3	Develop a trail along the Moorabool River in the Riverstone Estate which links to the COGG trail	Along river in estate	-	2	1	-	1	4	4
4	Explore the feasibility of developing a trail through the town along the Midland Hwy.	River to Daruma Way	-	1	1	-	-	2	6

No	Action	Location	Address safety	Connect to community facility/town centre/business area	Connect/complete existing path/trail network	Create circuit path	Trail along waterway/other feature	Total	Priority
		Weighting	5	3	2	1	1	12	
Dereel									
5	Support the development of the Dereel Swamp trail.	Around perimeter of swamp	-	3	1	1	1	6	2
6	Investigate the feasibility of developing a path along Ferrars Rd to the centre of Dereel.	Moffetts Rd to Colac-Ballarad Rd	2	1	-	-	-	3	5
Enfield									
7	Explore the feasibility of linking the 2 parts of Enfield with an internal trail.	TBD	2	1	-	-	-	3	5
Haddon									
8	Develop a path along Haddon School Rd from Blackberry Rd to existing path in central Haddon.	Blackberry Rd to existing path in Central Haddon.	3	1	1	-	-	5	3
Inverleigh									
8	Develop the following:								
	- A path along Inverleigh-Winchelsea Rd	Park St to McCullum St	1	3	2	-	-	6	2
	- A path along Mercer St	East St to Railway St	1	3	2	-	-	6	2
	- A path along Park St	Saleyard Rd to Railway St	1	3	2	-	-	6	2
	- A path along Napier St	East St to Railway St	1	3	2	-	-	6	2
	- A new path along Railway St	Hamilton Hwy to Park St	1	3	2	-	-	6	2
	- A new path which connects the Peel Estate to the centre of the town	Along the Hwy from Peel Rd to Cambridge St	1	3	2	-	-	6	2
	- A connecting path along Faulkner Rd between the end of the existing path and Common Rd	Existing path to Common Rd	1	1	2	-	-	4	4
	- A walking trail from the golf course to Teesdale (this track is already run by horses but would be good to formalise and encourage for walkers	Golf Course to Teesdale	1	-	-	-	-	1	6
	- A new path to the cemetery along the railway line.	Railway St to Cemetery	1	2	-			3	5
Lethbridge									
9	Develop a path network in the recreation reserve which links the community facilities in the reserve.	In the recreation reserve	-	2	-	1	-	3	5
10	Develop the following:								
	- A path linking the lake to the recreation reserve and then the school - along Bruce's Creek or Brunel St and then through the reserve.	Reserve to school along Creek or Brunel St	1	3	1	-	1	6	2
	- Along south side of Russell St	Railway crossing to the playground	3	2	1	-	-	6	2
	- Along Stephenson St	Cubitt St to Russell St	2	2	2	-	-	6	2

No	Action	Location	Address safety	Connect to community facility/town centre/business area	Connect/complete existing path/trail network	Create circuit path	Trail along waterway/other feature	Total	Priority
		Weighting	5	3	2	1	1	12	
	– Along Cubitt St	Ackland Rd to Brunel St	2	2	1	-	-	5	3
	– Along Noyes Rd from O'Connor Rd to Russell	O'Connor Rd to Russell	2	2	-	-	-	4	4
	– Along Tall Tree Rd from bend to railway line	Bend to railway line	2	2	-	-	-	4	4
Linton									
11	Develop a path on the highway near Linton-Niarighil Rd turnoff.	Hwy near Linton-Niarighil turnoff	5	-	-	-	-	5	3
12	Develop a path along York St	Grant St to Clyde St	1	2	2	-	-	5	3
13	Develop a new path along Surrey St	Grant St to Clyde St	1	2	2	-	-	5	3
Maude/Steiglitz									
14	Develop a trail along Steiglitz Rd as per the following stages:								
	– Pedrisat Rd to Maude Recreation Reserve	Pedrisat Rd to recreation reserve	5	3	-	-	-	8	1
	– Maude Recreation Reserve to Milvi Court	Recreation reserve to Milvi Crt	5	3	-	-	-	8	1
	– Milvi Court to 5 mile corner	Milvi Court to 5 mile corner	2	2	-	-	-	4	4
	– Plough Corner to Pedrisat Rd	Plough Corner to Pedrisat Rd	2	2	-	-	-	4	4
Meredith									
15	Establish a path network in Pioneer Park and develop the fitness circuit	Around park and reserve	-	-	2	1	-	3	5
16	Develop the following paths/trails:								
	– A path along Mercer St	McLeod St to Hwy	1	3	2	-	-	6	2
	– A path along Russell St	McLeod St to Hwy	1	3	2	-	-	6	2
	– A path along Lawler St	McLeod St to Hwy	1	3	2	-	-	6	2
	– A path along Wilson St	McLeod St to Police Paddocks	1	3	2	1	-	7	1
	– A path along Read St	Hwy to Lawler	1	3	2	-	-	6	2
	– A trail network within the Police Paddocks	In reserve	-	-	-	1	-	1	6
	– Continuation of the Coolebarghurk Creek trail to the north	Sutherland St to Creamery Rd	-	-	2	1	1	4	4
	– Connection of the extended Coolebarghurk Creek trail to Pioneer Park	Along McLeod from Hwy to Wilson St	-	-	1	1	-	3	5
	– Path along Champ St from the connection between Pioneer Park and Police Paddocks to Coolebarghurk Creek trail.	Champ St to Staughton St/ Coolebarghurk Creek trail	-	-	2	1	-	3	5

No	Action	Location	Address safety	Connect to community facility/town centre/business area	Connect/complete existing path/trail network	Create circuit path	Trail along waterway/other feature	Total	Priority
		Weighting	5	3	2	1	1	12	
Napoleons									
17	Develop a path along the west side of Colac-Ballarat Rd between Scotchman's Lead Rd and the school	Scotchman's Lead Rd to school	5	-	2	-	-	7	1
Rokewood/Corindhap									
18	Develop the following paths: – A path from the school along Aitchison St and Gipps St to the service station – A path along the rest of Aitchison St – Paths along McMillan and Wilson St to the creek	School along Aitchison St and Gipps St to the service station Gipps St to McMillan Rd From Hwy to creek	3 1 -	3 2 2	2 2 1	- - 1	- - -	8 5 4	1 3 4
Shelford									
19	Develop a trail along the Leigh River between North and South Sts	North St to South St	-	2	-	-	1	3	5
Teesdale									
20	Provide a foot/bicycle crossing at the north end of Sutherland St connecting the existing path in Sutherland St to the proposed mown trail in Panticks Rd.	River at northern end of Sutherland Rd	-	-	2	-	1	3	5
21	Construct a path linking Turtle Bend Park to the hall and on to Chinaman's Lagoon	Turtle Bend Park to hall and on to Chinaman's Lagoon	-	3	1	-	-	4	4