

**A Victorian
Government
Project**



Connecting Bannockburn to natural gas

ENERGY FOR THE REGIONS PROGRAM

Funding by Regional Development Victoria
through the \$1 billion Regional Growth Fund
in partnership with SP AusNet.



Authorised and published by the Victorian Government, 1 Treasury Place, Melbourne.

Connecting Gas to Bannockburn

Part of the *Energy for the Regions* Program

Geoff Thorn

Program Manager, Energy for the Regions

SP AusNet

21 July 2014

Agenda



Introductions

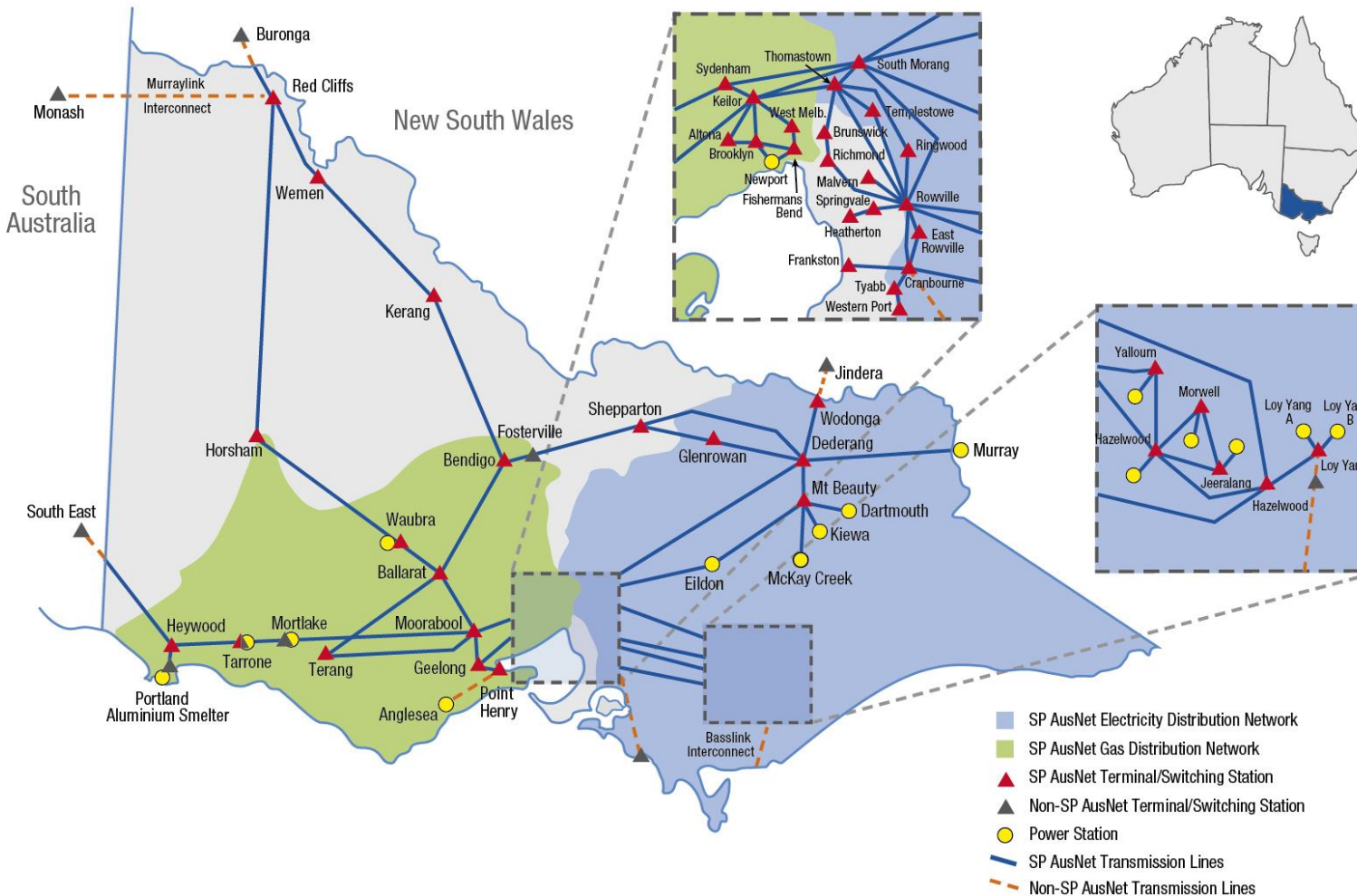
SP AusNet presentation

Question time

Who is SP AusNet



SP AusNet's electricity and gas networks



- **Gas Distribution**
- 10,022 kms of pipe
- 638,113 customers

Electricity Transmission

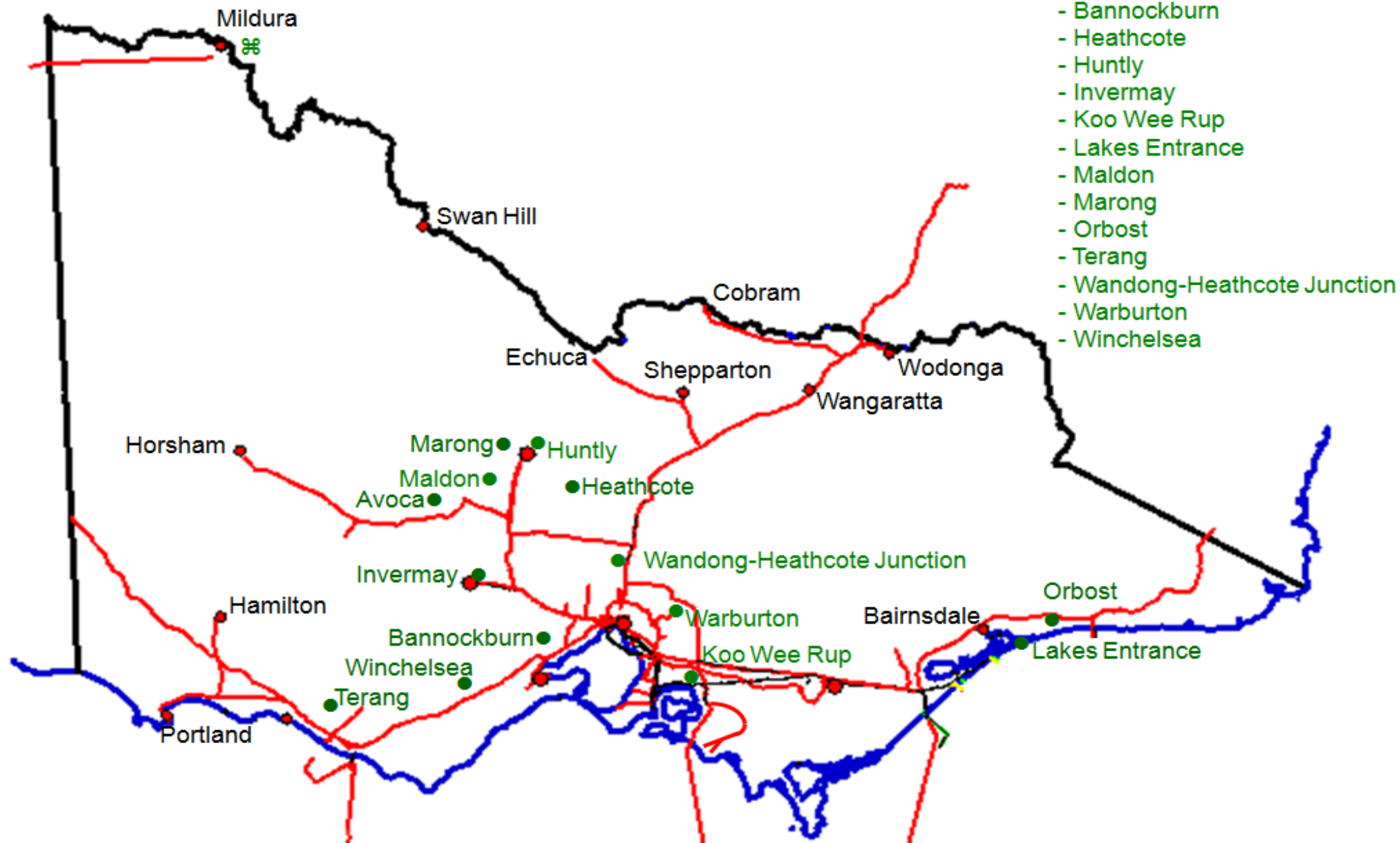
- 6,573 kms lines
- 13,000 towers

Electricity Distribution

- 49,512 kms of lines
- 658,461 customers

⌘ Supply Augmentation:
- Mildura

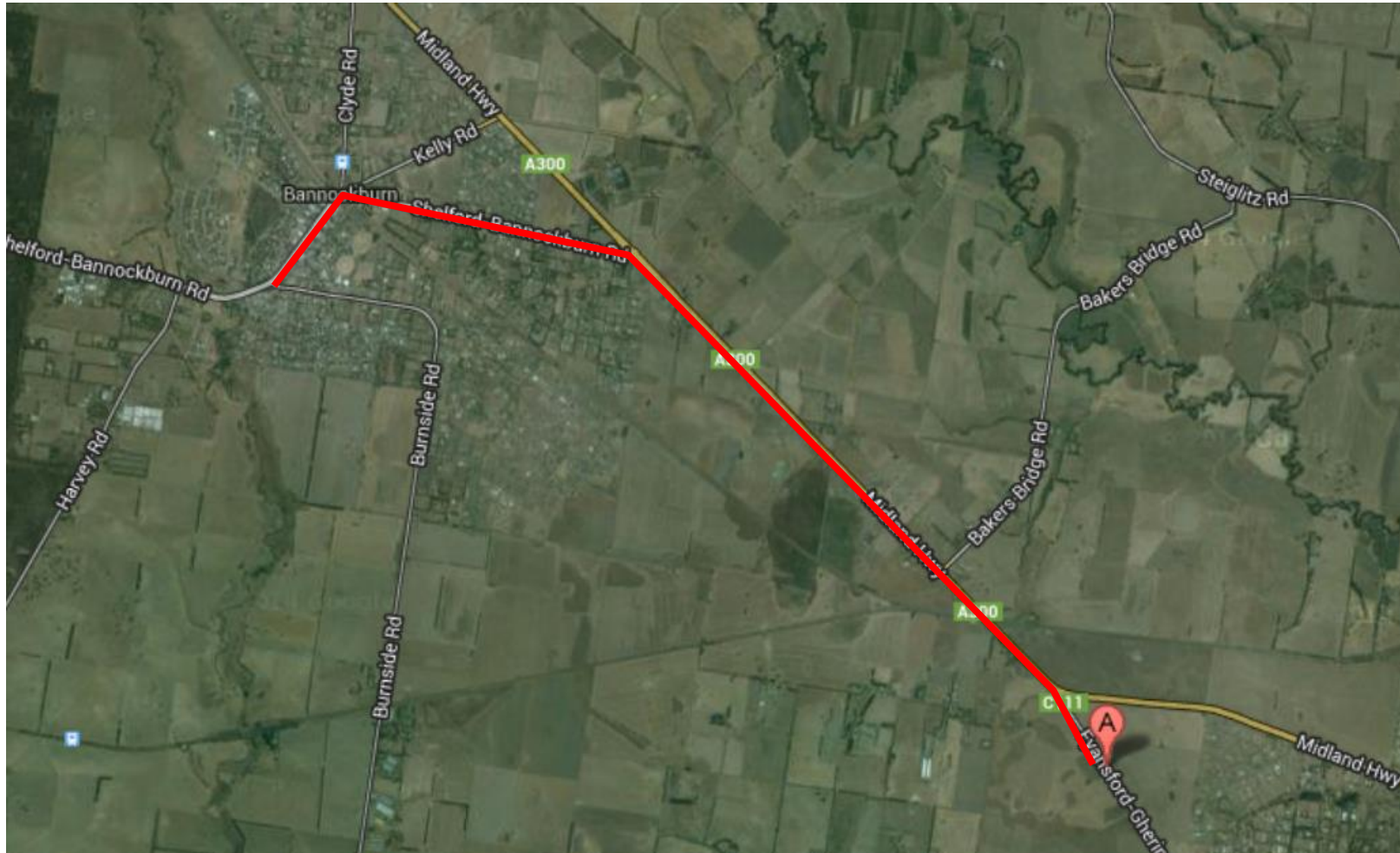
● Priority Towns:
- Avoca
- Bannockburn
- Heathcote
- Huntly
- Invermay
- Koo Wee Rup
- Lakes Entrance
- Maldon
- Marong
- Orbost
- Terang
- Wandong-Heathcote Junction
- Warburton
- Winchelsea





- Regional Development Victoria made fixed offers to the three Victorian Gas Distributors for the connection of priority towns.
- RDV reached an agreement with SP AusNet for the supply of natural gas to 4 towns including Bannockburn.
- This project was announced in May 2013
- The Government will contribute \$8.976 million
- Potential connection of more than 1500 homes and businesses in Bannockburn

Connection to the Transmission Pipe



- Fyansford-Gheringhap Road
- Construct a City Gate (Pressure Reduction Station)

Reticulation map

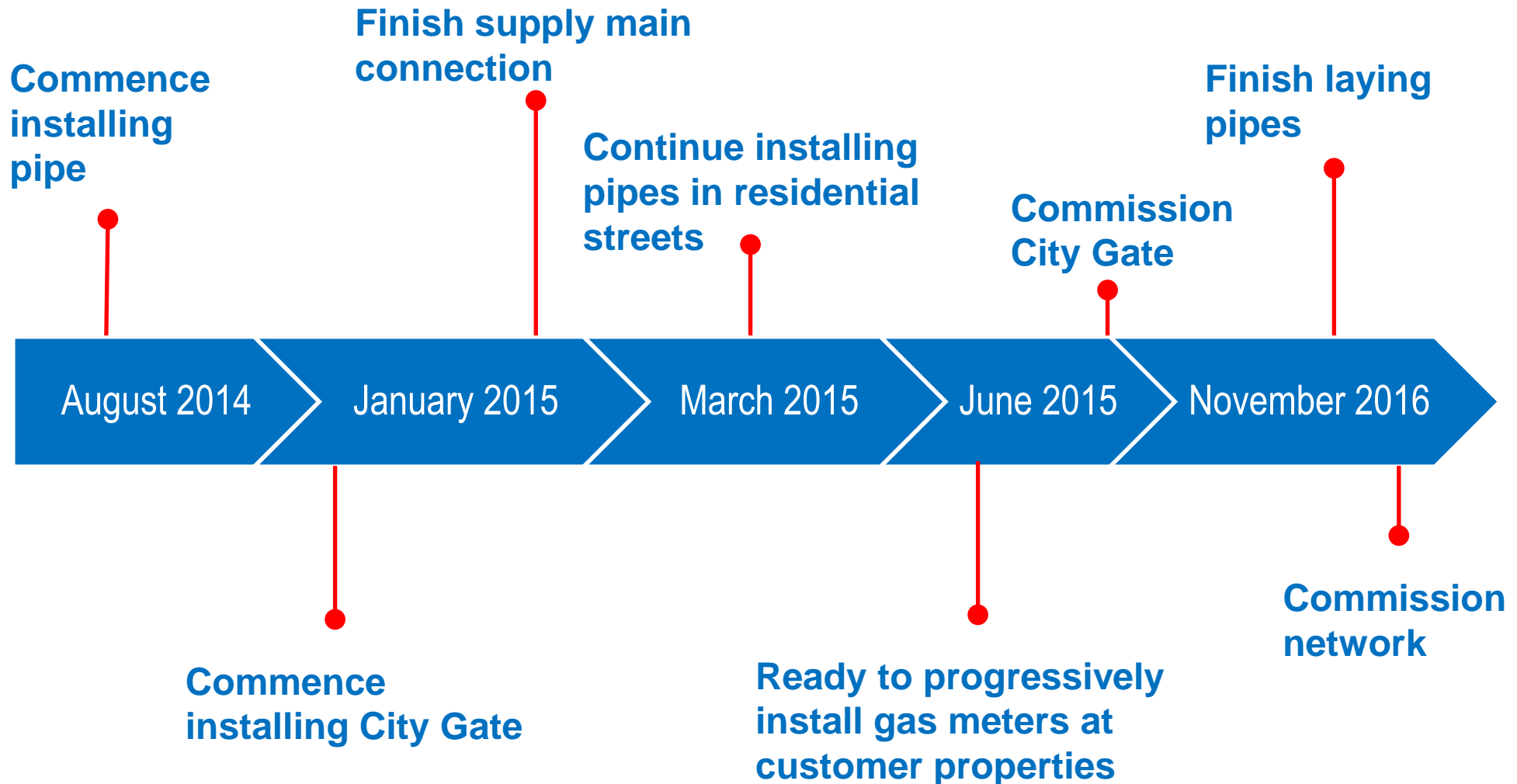


- Both sides of High St will have pipe installed

In addition to the 8,700 m of 180mm supply main we will install

- 4,800m of 125mm supply main
- 37,250m of 63mm reticulation

Project timeline - Bannockburn



Some Project considerations



- Obtain approval from all relevant state and federal government bodies:
 - Golden Plains Council
 - VicRoads
 - VicTrack
 - Department of Environment and Primary Industries (DEPI)
 - Local Aboriginal representatives
- Full environmental and cultural heritage management plan developed
- Liaise closely with the community
 - Signs to be erected at the major entry points into Bannockburn
 - Newspaper and e-newsletter articles to be written
 - Undertake work cleanly and quietly
 - Work will be done Monday – Friday 7.00am to 5.00pm

Pressure reduction stations – City gates



Putting pipe in the ground using HDD



Information for customers

How do I apply
for a gas
connection?



Who can I ask
if I have more
questions?

How to apply for connection to natural gas



1st step

- Apply for connection with your preferred gas retail company.
- The Gas retailer places an order with SP AusNet to install a service pipe from the street to your house.



2nd step

- Customer engages plumber/gas fitter to run any internal pipework to the location of the connection.
- Customer/plumber contacts your gas retailer to request meter installation



Final step

- SP AusNet's will return and install the meter.
- Plumber / Gas Fitter will test appliances and light them

Gas retailers



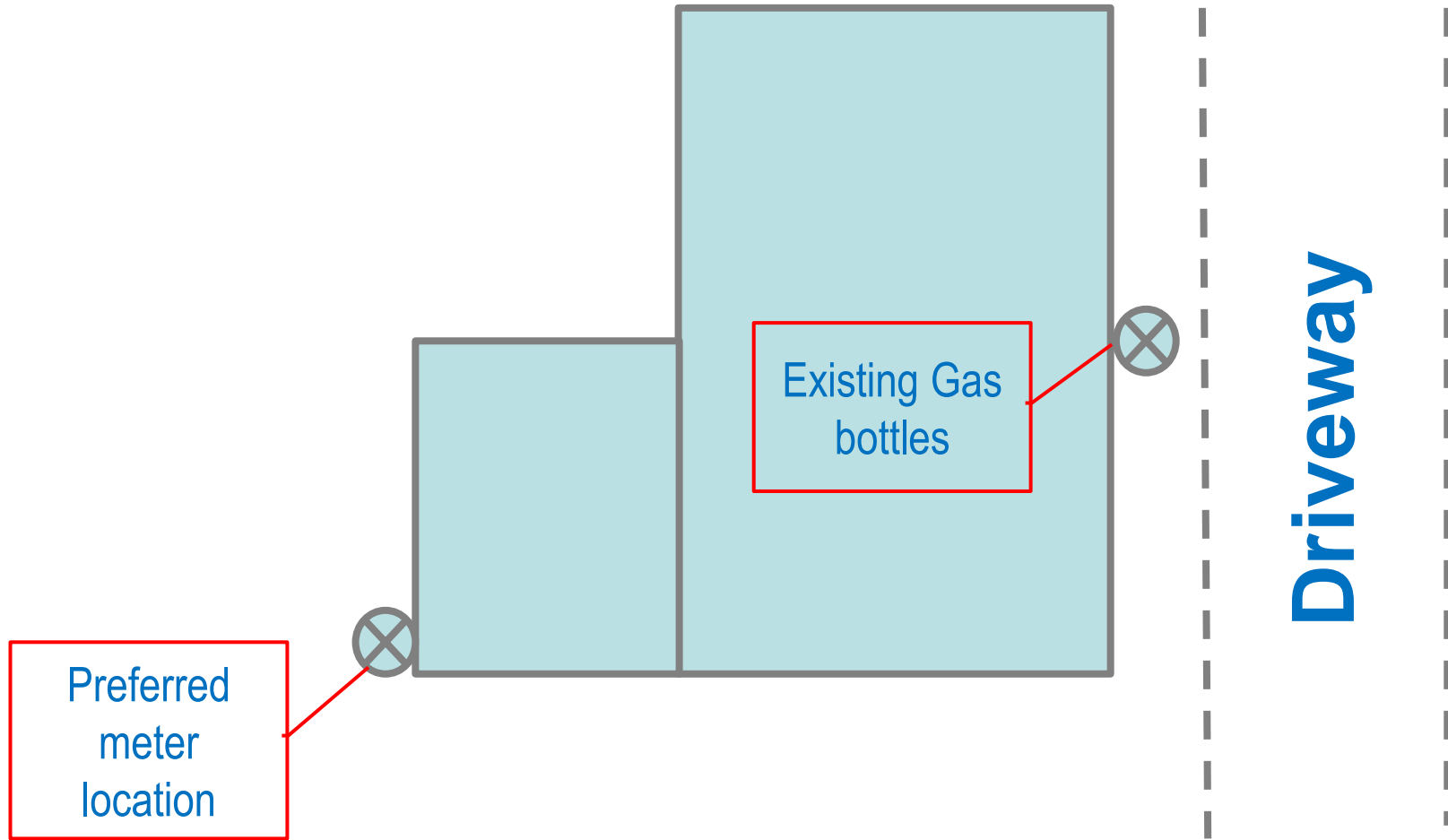
Retailer	Website	Phone
AGL	www.agl.com.au	13 12 45
Alinta	www.alintaenergy.com.au	13 37 02
Australian Power & Gas	www.australianpowerandgas.com.au	13 32 98
Click Energy	www.clickenergy.com.au	1300 669 432
Diamond Energy	www.diamondenergy.com.au	1300 838 009
Dodo Power & Gas	www.dodo.com	13 36 36
Energy Australia	www.energyaustralia.com.au	1800 818 378
ERM Business Energy	www.ermpower.com.au	13 43 76
Lumo Energy	www.lumoenergy.com.au	1300 364 720
Momentum Energy	www.momentumenergy.com.au	1800 794 824
Neighbourhood Energy	www.neighbourhood.com.au	1300 764 860
Origin Energy	www.originenergy.com.au	13 24 63
QEnergy	www.qenergy.com.au	1300 448 535
People Energy	www.peopleenergy.com.au	1300 788 970
Powerdirect	www.powerdirect.com.au	1300 307 966
Powershop	www.powershop.com.au	1800 462 668
Red Energy	www.redenergy.com.au	13 18 06
Simply Energy	www.simplyenergy.com.au	1800 009 147

Benefits of Natural Gas (convenience/cost)



- There are many associated with natural gas
 - Cheaper than LPG
 - Cheaper than electricity
 - Cleaner than wood
 - Connection to the main supply means no more LPG bottles or collecting, chopping, storing wood
 - Wider appliance choice for heating, cooking and hot water
 - Environmentally friendly
 - Highly reliable

Locating the meter



For more information

