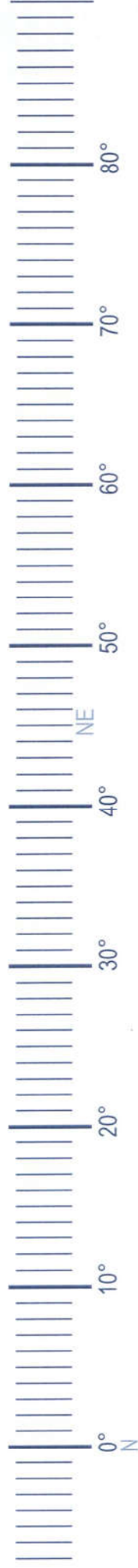


**Geelong Resource Recovery Facility
1560 Hamilton Highway, Stonehaven**

Photomontage

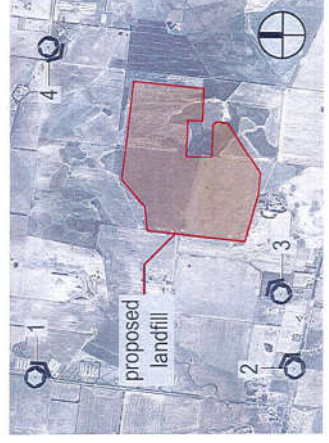
View location 3 - view of proposed development with proposed vegetation and existing buffer vegetation as mature



View location 3 - from 1620 Hamilton Hwy, Murgheboluc, facing north towards subject site

photomontage created by:
HTS - B Arch
Images created using:
3ds max 2016, autocad 2016, adobe photoshop, illustrator & indesign cc 15, vray 3
method used to collect relevant data:
Photo locations obtained on site by Geocomp
Consulting pty ltd on the 09/02/17
camera:
Canon EOS 60D Digital SLR
camera lens:
Canon EF 18-55mm (horizontal) focal length set at 30mm equivalent.

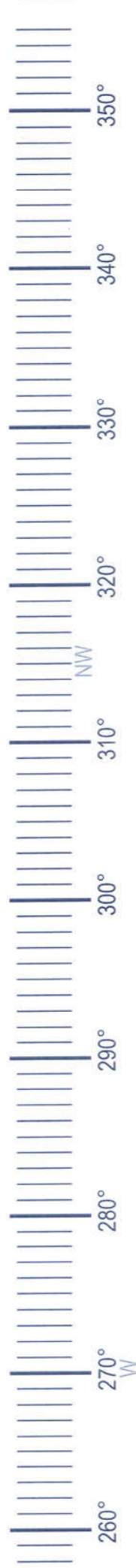
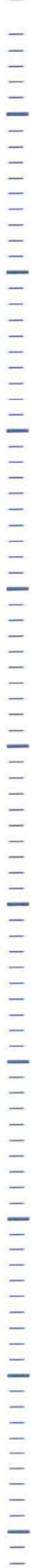
photograph taken:
11:24am on the 09/02/17
photo taken at:
160m above ground level
view location 3:
e: 253101 9210
n: 577739 6230
r: 76.3430
approx. distance from proposed landfill:
650m



project ref: 16 641
client: VIA-009
date: 17/03/17
revision:
hansen partnership pty ltd
melbourne | vietnam
level 4, 136 exhibition st
melbourne vic 3000
t 61 3 9654 8844 f 61 3 9654 8088
e info@hansenpartnership.com.au
w hansenpartnership.com.au

**Geelong Resource Recovery Facility
1560 Hamilton Highway, Stonehaven**

**Photomontage
View location 4 - existing view**



View location 4 - from Booley Road, Gheringhap, facing southwest towards subject site

photomontage created by:
HTS - B Arch

images created using:
3ds max 2016, autocad 2016, adobe photoshop, illustrator & indesign cc 15, vray 3

method used to collect relevant data:
Photo locations obtained on site by Geocomp

consulting pty ltd on the 06/02/17

camera:
Canon EOS 60D Digital SLR

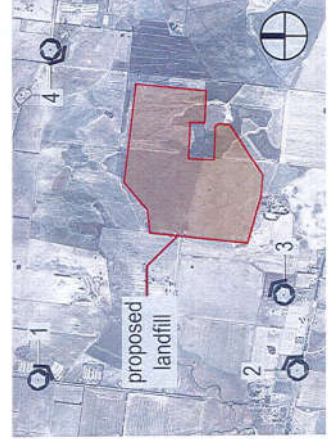
camera lens:
Canon EF 18-55mm (horizontal) focal length set at 30mm equivalent

photograph taken:
11:54am on the 06/02/17

photo taken at:
160cm above ground level

view location 4:
e: 255652.5220
n: 5760112.4800
rt: 82.2470

approx. distance from proposed landfill:
946m

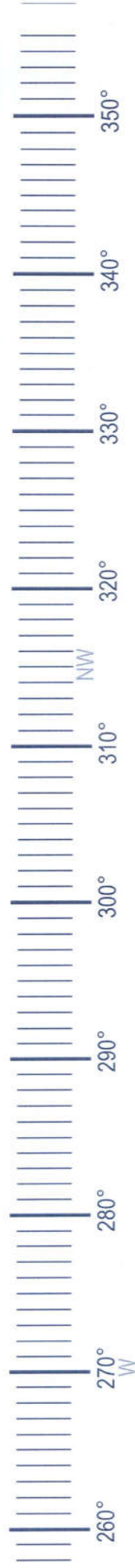
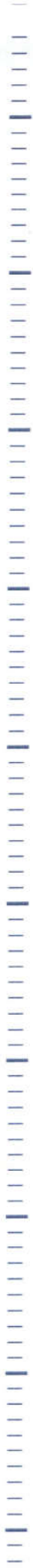


project ref: 16.641
dwg no.: VIA-010
date: 17/03/17
revision:

hansen partnership pty ltd
melbourne | victoria
level 4, 136 exhibition st
melbourne vic 3000
t 61 3 9654 8844 f 61 3 9654 8088
e info@hansenpartnership.com.au
w hansenpartnership.com.au

**Geelong Resource Recovery Facility
1560 Hamilton Highway, Stonehaven**

**Photomontage
View location 4 - view of proposed development**



View location 4 - from Booley Road, Gheringhap, facing southwest towards subject site

photomontage created by:

HIS - B.Vrch

images created using:

3ds max 2016, autocad 2016, adobe photoshop, illustrator & indesign cc: 15, vray 3

method used to collect relevant data:

Photo locations obtained on site by Geocomp Consulting Pty Ltd on the 09/02/17

camera:

Canon EOS 60D Digital SLR

camera lens:

Canon EFS 18-55mm (horizontal) focal length set at 30mm equivalent

photograph taken:

T1-54cm on the 09/02/17

photo taken at:

160cm above ground level

view location 4:

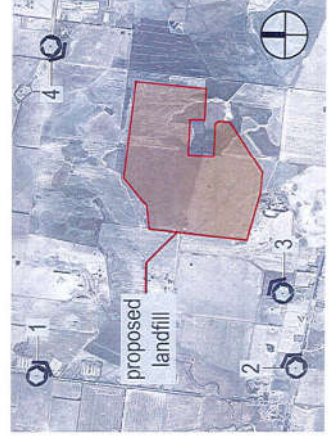
e: 255652.5220

n: 5760112.4800

rl: 82.2470

approx. distance from proposed landfill:

646m



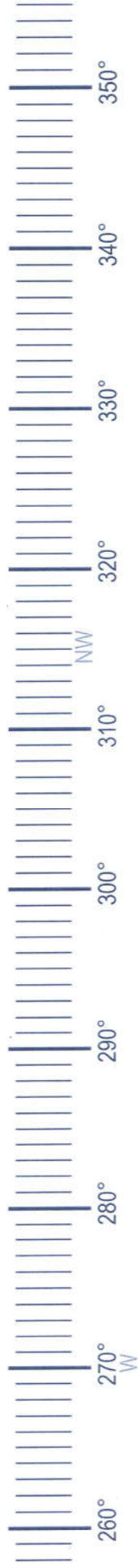
project ref: 16 641
 dwg no.: VIA-011
 date: 17/03/17
 revision:

hansen partnership Pty Ltd
 Melbourne | victoria
 level 4 136 exhibition st
 Melbourne vic 3000
 t 61 3 9654 8844 f 61 3 9654 8088
 e info@hansenpartnership.com.au
 w hansenpartnership.com.au

**Geelong Resource Recovery Facility
1560 Hamilton Highway, Stonehaven**

Photomontage

View location 4 - view of proposed development with proposed vegetation and existing buffer vegetation as mature



View location 4 - from Booley Road, Gheringhap, facing southwest towards subject site

photomontage created by:
HTS - B Arch

images created using:
3ds max 2016; autodesk 2016; adobe photoshop; illustrator & indesign cc 15. vray 3

method used to collect relevant data:
Photo locations obtained on site by Geocomp Consulting Pty Ltd on the 09/02/17

camera:
Canon EOS 60D Digital SLR

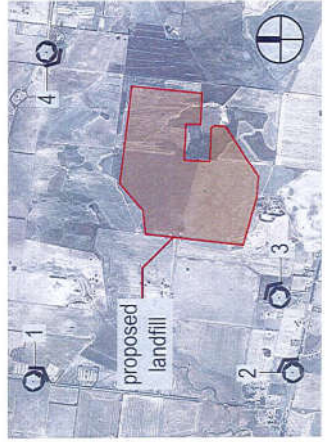
camera lens:
Canon EFS 16-55mm (horizontal) focal length set at 30mm equivalent.

photograph taken:
11.54am on the 09/02/17

photo taken at:
160m above ground level

view location 4:
e: 255652.5220
n: 5760112.4800
ht: 82.2470

approx. distance from proposed landfill:
546m



project ref: 16.641
dwg no.: VIA-012
date: 17/03/17
revision:

hansen partnership pty ltd
melbourne | vietnam
level 4 136 exhibition st
melbourne vic 3000
t 61 3 9654 8644 f 61 3 9654 8088
e info@hansenpartnership.com.au
w hansenpartnership.com.au