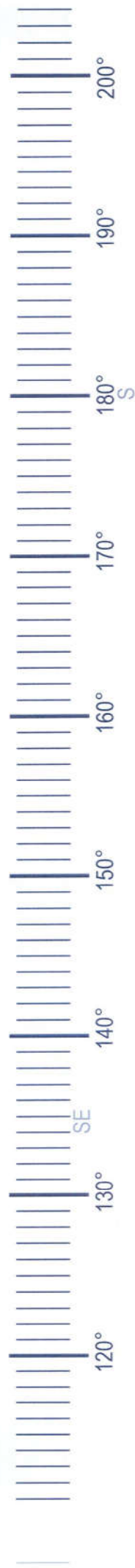


# Geelong Resource Recovery Facility 1560 Hamilton Highway, Stonehaven

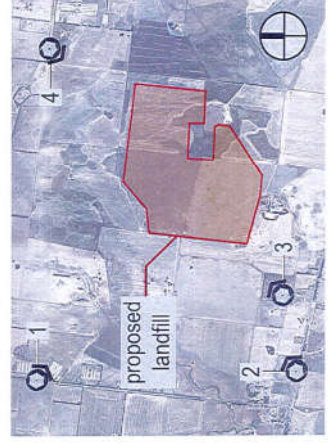
## Photomontage View location 1 - existing view



**View location 1 - from Burnside Rd, Bannockburn, facing southeast towards subject site**

**photomontage created by:**  
HTS - B.Arch  
**images created using:**  
3ds max 2016, autocad 2016, adobe photoshop, illustrator & indesign cc 15, vray 3  
**method used to collect relevant data:**  
Photo locations obtained on site by Geocomp  
**consulting phy lid on the 08/02/17**  
**camera:**  
Canon EOS R10 Digital SLR  
**camera lens:**  
Canon EF 18-55mm (horizontal) focal length set at 30mm equivalent.

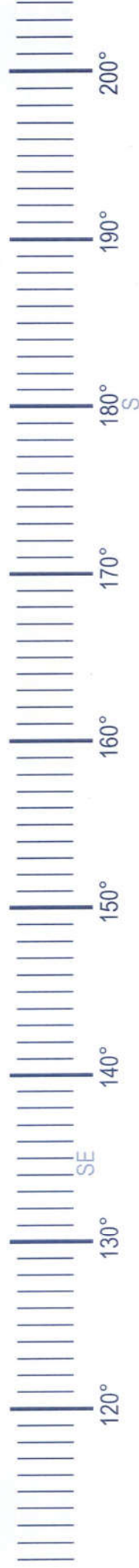
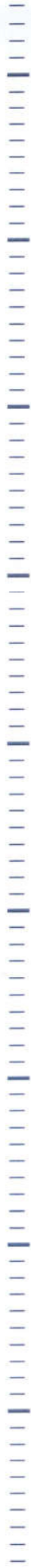
**photograph taken:**  
10:56am on the 08/02/17  
**photo taken at:**  
160cm above ground level  
**view location 1:**  
e: 252255.9440  
n: 5760235.6810  
rl: 76.4220  
**approx. distance from proposed landfill:**  
1,982m



**project ref:** 16.641  
**diag no.:** VIA/001  
**date:** 17/03/17  
**revision:** -  
**hansen partnership phy lid**  
melbourne | vietnam  
level 4 136 exhibition st  
melbourne vic 3000  
t 61 3 9654 8844 f 61 3 9654 8888  
e info@hansenpartnership.com.au  
w hansenpartnership.com.au

**Geelong Resource Recovery Facility  
1560 Hamilton Highway, Stonehaven**

**Photomontage  
View location 1 - view of proposed development**



**View location 1 - from Burnside Rd, Bannockburn, facing southeast towards subject site**

**photomontage created by:**  
HTS - B Arch

**images created using:**  
3ds max, 2016, autocad 2016, adobe photoshop, illustrator & indesign cc: 15, vray 3

**method used to collect relevant data:**  
Photo locations obtained on site by Geocomp Consulting Pty Ltd on the 09/02/17

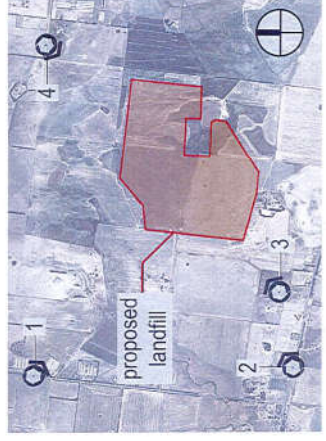
**camera:**  
Canon EOS 60D Digital SLR  
Canon lens:  
Canon EFS 18-55mm (horizontal) focal length: set at 30mm equivalent

**photograph taken:**  
10:56am on the 09/02/17

**photo taken at:**  
160cm above ground level

**View location 1:**  
e: 252255.9440  
n: 5780235.5810  
fl: 76.4230

**approx. distance from proposed landfill:**  
1,082m



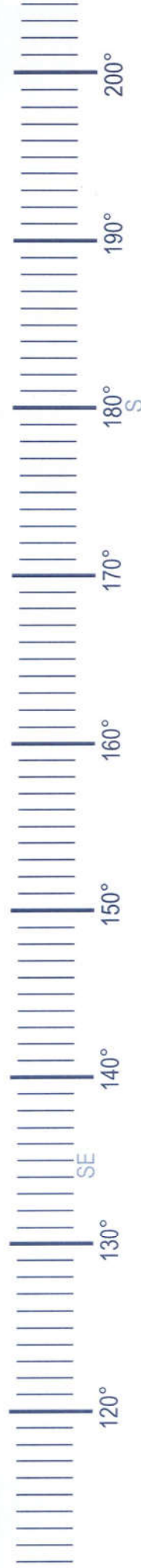
**project ref:** 16.64  
**dwg no.:** VIA-002  
**date:** 17/03/17  
**revision:** -

**hansen partnership Pty Ltd  
melbourne | victoria  
level 4 136 exhibition st  
melbourne vic 3000  
161 3 9654 8844 161 3 9654 8088  
e info@hansenpartnership.com.au  
w hansenpartnership.com.au**

**Geelong Resource Recovery Facility  
1560 Hamilton Highway, Stonehaven**

**Photomontage**

View location 1 - view of proposed development with proposed vegetation and existing buffer vegetation as mature



**View location 1 - from Burnside Rd, Bannockburn, facing southeast towards subject site**

**photomontage created by:**  
HTS - B.Arch

**images created using:**  
3ds max 2016, autocad 2016, adobe photoshop, illustrator & indesign cc 15, vray 3

**method used to collect relevant data:**  
Photo locations obtained on site by Geocomp Consulting Pty Ltd on the 08/02/17

**camera:**  
Canon EOS 60D Digital SLR

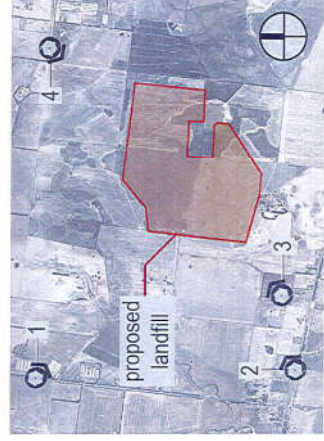
**camera lens:**  
Canon EFS 18-55mm (horizontal) focal length set at 30mm equivalent

**photograph taken:**  
10.56m on the 08/02/17

**photo taken at:**  
160cm above ground level

**view location 1:**  
e: 252255.9440  
n: 5780235.5810  
ri: 76.4230

**approx. distance from proposed landfill:**  
1.882m

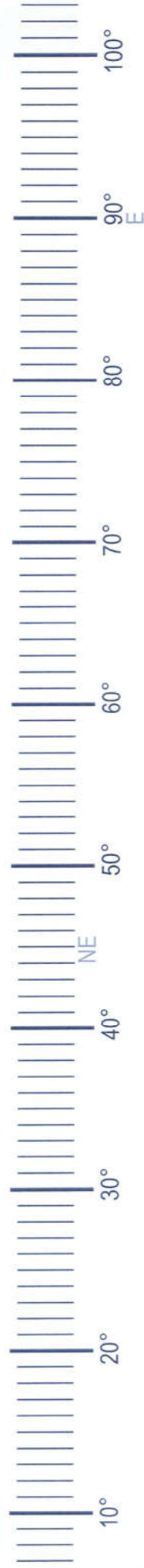


**project ref:** 16.641  
**dwg no.:** VIA-003  
**date:** 17/03/17  
**revision:**

**hansen partnership pty ltd**  
melbourne | victoria  
level 4, 136 exhibition st  
melbourne vic 3000  
t 61 3 9654 8844 f 61 3 9654 8088  
e info@hansenpartnership.com.au  
w hansenpartnership.com.au

**Geelong Resource Recovery Facility**  
1560 Hamilton Highway, Stonehaven

**Photomontage**  
View location 2 - existing view



**View location 2 - from Hamilton Hwy, Murgheboluc, facing north towards subject site**

**photomontage created by:**  
HTS - B.Arch

**images created using:**  
3ds max 2016; autocad 2016; adobe photoshop, illustrator & indesign cc 15; vray 3

**method used to collect relevant data:**  
Photo locations obtained on site by Geocomp Consulting Pty Ltd on the 09/02/17

**camera:**  
Canon EOS 60D Digital SLR

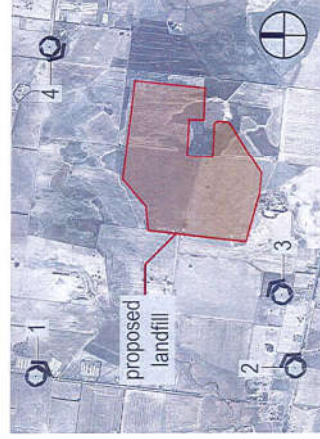
**camera lens:**  
Canon EFS 15-55mm (horizontal) focal length set at 30mm equivalent

**photograph taken:**  
11:11am on the 09/02/17

**photo taken at:**  
160cm above ground level

**view location 2:**  
e: 252335 6590  
n: 5777599 3510  
rl: 75 7960

**approx. distance from proposed landfill:**  
1,400m

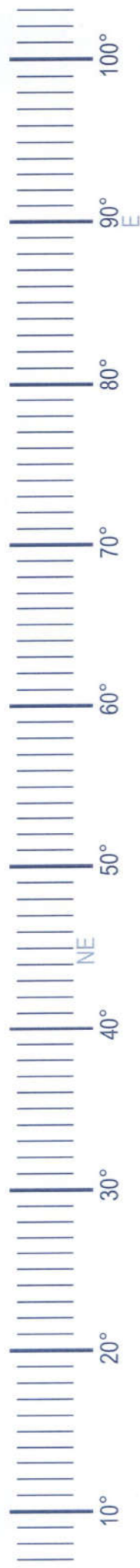


**project ref:** 16 041  
**dwg no.:** VIA-004  
**date:** 17/03/17  
**revision:**

**hansen partnership pty ltd**  
melbourne | victoria  
level 4, 136 exhibition st  
melbourne vic 3000  
t 61 3 9654 8844 f 61 3 9654 8088  
e info@hansenpartnership.com.au  
w hansenpartnership.com.au

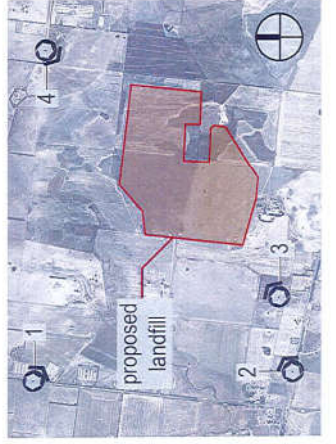
# Geelong Resource Recovery Facility 1560 Hamilton Highway, Stonehaven

## Photomontage View location 2 - view of proposed development



**View location 2 - from Hamilton Hwy, Murgheboluc, facing north towards subject site**

**photomontage created by:** HTS - B Arch  
**images created using:** 3ds max 2016, autocad 2016, adobe photoshop, illustrator & indesign cc 15, vray 3  
**method used to collect relevant data:** Photo locations obtained on site by Geocomp Consulting Pty Ltd on the 09/02/17  
**camera:** Canon EOS 60D Digital SLR  
**camera lens:** Canon EFS 18-55mm (horizontal) focal length set at 30mm equivalent  
**photograph taken:** 11:11am on the 09/02/17  
**photo taken at:** 180cm above ground level  
**view location 2:** e: 2523355.6590 n: 5777569.3510 rt: 75.7950  
**approx. distance from proposed landfill:** 1,400m

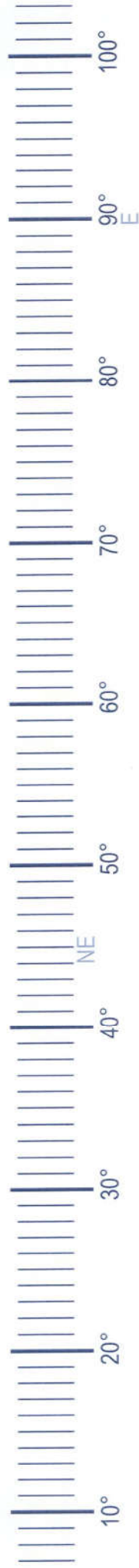


**project ref:** 16.641  
**diag no.:** VIA-005  
**date:** 17/03/17  
**revision:** -  
**hansen partnership pty ltd melbourne | vietnam level 4 136 exhibition st melbourne vic 3000**  
**1 61 3 9654 8844 1 61 3 9654 8088**  
**e info@hansenpartnership.com.au**  
**w hansenpartnership.com.au**

**Geelong Resource Recovery Facility  
1560 Hamilton Highway, Stonehaven**

**Photomontage**

View location 2 - view of proposed development with proposed vegetation and existing buffer vegetation as mature



**View location 2 - from Hamilton Hwy, Murgheboluc, facing north towards subject site**

**photomontage created by:**  
HTS - B Arch  
**images created using:**  
3ds max 2016, autocad 2016, adobe photoshop, illustrator & indesign cc 15. vray 3  
**method used to collect relevant data:**  
Photo locations obtained on site by Geocomp Consulting Pty Ltd on the 09/02/17  
**camera:**  
Canon EOS 60D Digital SLR  
**camera lens:**  
Canon EFS 18-55mm (horizontal) focal length: set at 30mm equivalent

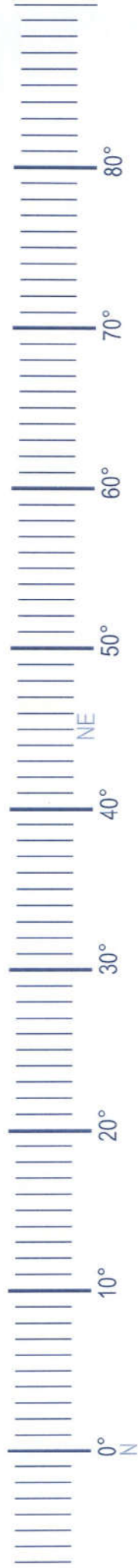
**photograph taken:**  
11:11am on the 09/02/17  
**photo taken at:**  
165cm above ground level  
**View location 2:**  
e: 252335.6590  
n: 5777599.3510  
rt: 75.7960  
**approx. distance from proposed landfill:**  
1,400m



**project ref:** 16.641  
**dwg no.:** VIA-006  
**date:** 17/03/17  
**revision:**  
  
hansen partnership pty ltd  
melbourne | vietnam  
level 4 | 136 exhibition st  
melbourne vic. 3000  
t 61 3 9654 8844 f 61 3 9654 8088  
e info@hansenpartnership.com.au  
w hansenpartnership.com.au

**Geelong Resource Recovery Facility**  
**1560 Hamilton Highway, Stonehaven**

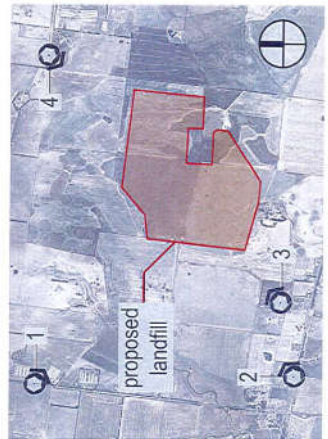
**Photomontage**  
 View location 3 - existing view



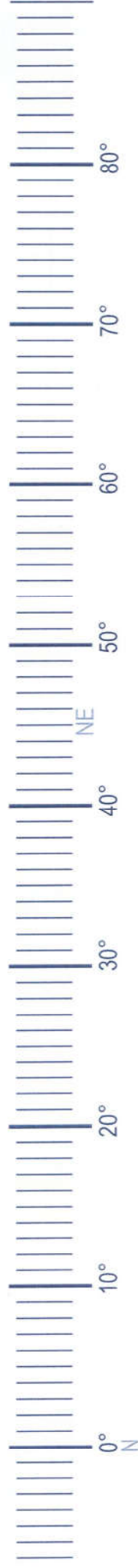
**View location 3 - from 1620 Hamilton Hwy, Murgheboluc, facing north towards subject site**

**photomontage created by:**  
 HTS - B.Arch  
**images created using:**  
 3ds max 2016, autocad 2016, adobe photoshop,  
 illustrator & indesign cc 15. vray 3  
**method used to collect relevant data:**  
 Photo locations obtained on site by Geocomp  
 Consulting Pty Ltd on the 09/03/17  
**camera:**  
 Canon EOS 60D Digital SLR  
**camera lens:**  
 Canon EF50 1.8-55mm (horizontal) focal length set  
 at 30mm equivalent

**photograph taken:**  
 11.24am on the 09/02/17  
**photo taken at:**  
 160cm above ground level  
**view location 3:**  
 e: 253101.9210  
 n: 5777739.9230  
 rl: 76.8430  
**approx. distance from proposed landfill:**  
 650m



**project ref:** 16.641  
**dwg no.:** VIA-007  
**date:** 17/03/17  
**revision:**  
 hansen partnership pty ltd  
 melbourne | victoria  
 level 4, 136 exhibition st  
 melbourne vic 3000  
 t 61 3 9654 8844 f 61 3 9654 8088  
 e info@hansenpartnership.com.au  
 w hansenpartnership.com.au



**View location 3 - from 1620 Hamilton Hwy, Murgheboluc, facing north towards subject site**

**photomontage created by:**  
HTS - B Arch

**images created using:**  
3ds max 2016, autocad 2016, adobe photoshop, illustrator & indesign cc 15, vray 3

**method used to collect relevant data:**  
Photo locations obtained on site by Geocomp Consulting Pty Ltd on the 09/02/17

**camera:**  
Canon EOS R10 Digital SLR

**camera lens:**  
Canon EFS 16-55mm (horizontal) focal length set at 30mm equivalent

**photograph taken:**  
11:24am on the 09/02/17

**photo taken at:**  
160cm above ground level

**view location 3:**  
e: 253101.9210  
n: 5777739.9230  
ht: 76.3430

**approx. distance from proposed landfill:**  
650m



**project ref:** 16.641  
**dwg no.:** VIA-008  
**date:** 17/03/17  
**revision:**

**hansen partnership pty ltd**  
melbourne | victoria  
level 4 136 exhibition st  
melbourne vic 3000  
t 61 3 9654 8844 f 61 3 9654 8088  
e info@hansenpartnership.com.au  
w hansenpartnership.com.au