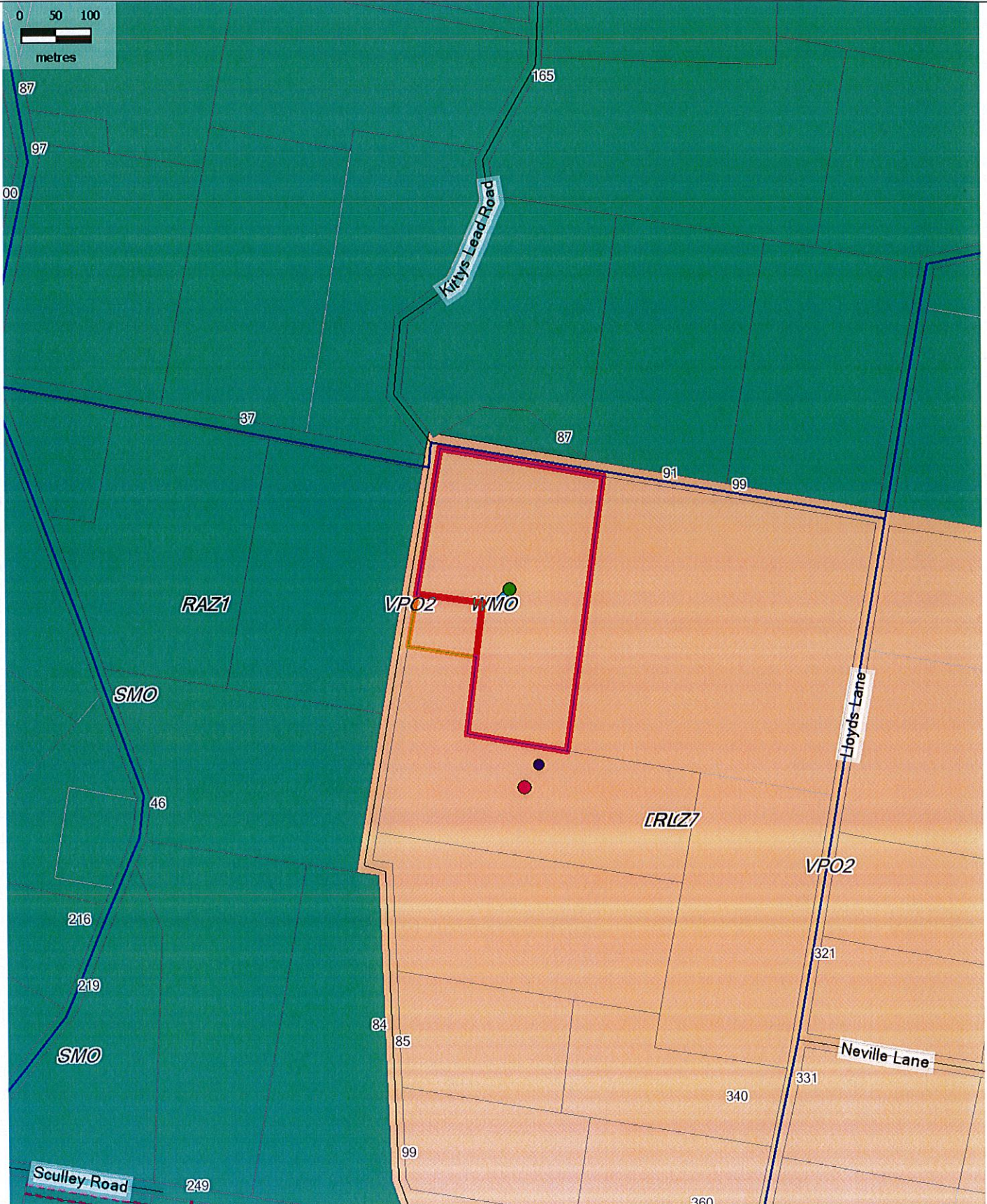


# Title : P17-016

## Subtitle : The Use of the Land for Agriculture and Removal of Native Vegetation



Map Zoom: 1408 m  
Scale: 1:3,318



### About this Document

This map has been created for the purpose of showing basic locality information over Golden Plains Shire Council. Cadastral information has been provided by Land Victoria and may not accurately reflect true title status and/or boundary definition.

### Disclaimer

This map is a representation of the information currently held by Golden Plains Shire Council. While every effort has been made to ensure the accuracy of the product, Council accepts no responsibility for any errors or omissions.

**Title : P17-016**

**Subtitle : The Use of the Land for Agriculture and Removal of Native Vegetation**



Map Zoom: 656.8 m  
Scale: 1:1,548



**About this Document**

This map has been created for the purpose of showing basic locality information over Golden Plains Shire Council. Cadastral information has been provided by Land Victoria and may not accurately reflect true title status and/or boundary definition.

**Disclaimer**

This map is a representation of the information currently held by Golden Plains Shire Council. While every effort has been made to ensure the accuracy of the product, Council accepts no responsibility for any errors or omissions.