

INCIDENT, INJURY, TRAUMA AND ILLNESS

QUALITY AREA 2 | VERSION 1.5

Adopted by Approved Provider of Golden Plains Shire Council Children's Services		Month / Year
Date revised		March 2024
Next revision due		March 2026



PURPOSE

This policy will provide a framework for:

- procedures to be followed if a child is ill, or is involved in a medical emergency or an incident at the service that results in injury or trauma
- responsibilities of staff, parents/guardians and the approved provider when a child is ill, or is involved in a medical emergency or an incident at the service that results in injury or trauma
- practices to be followed to reduce the risk of an incident occurring at the service.



POLICY STATEMENT

VALUES

Golden Plains Shire Council operated Early Childhood Education and Care services are committed to:

- providing a safe and healthy environment for all children, staff, volunteers, students and any other persons participating in or visiting the service
- responding to the needs of an injured, ill or traumatised child at the service
- preventing injuries and trauma
- preventing the spread of illness through simple hygiene practices, monitoring immunisation records and complying with recommended exclusion guidelines
- maintaining a duty of care to children and users of Golden Plains Shire Council

SCOPE

This policy applies to the approved provider, persons with management or control, nominated supervisor, persons in day-to-day charge, early childhood teachers, educators, Family Day Care educators, staff, students, volunteers, parents/guardians, children and others attending the programs and activities of Golden Plains Shire Council, including during offsite excursions and activities.

RESPONSIBILITIES	Approved provider and persons with management or control	Nominated supervisor and persons in day-to-day charge	Early childhood teacher, educators, Family Day Care educators and all other staff	Parents/guardians	Contractors, volunteers and students
R indicates legislation requirement, and should not be deleted					
Ensuring the <i>Incident, Injury, Trauma and Illness Policy</i> and procedures are in place (<i>Regulations 168</i>) and available to all stakeholders (<i>Regulations 171</i>)	R	√			
Taking reasonable steps to ensure that nominated supervisors, early childhood teachers, educators, staff and volunteers follow the policy and procedures and are aware of their responsibilities (<i>Regulations 170</i>)	R	√			
Ensuring that the premises are kept clean and in good repair	R	R	√		√
Maintaining effective supervision (<i>refer to Supervision of Children Policy</i>) for all enrolled children in all aspects of the service's program that is reflective of the children's needs, abilities, age and circumstances	R	R	√		
Regularly checking equipment in both indoor and outdoor areas for hazards (<i>refer to Attachment 1</i>), and taking the appropriate action to ensure the safety of the children when a hazard is identified	R	R	√		
Being proactive, responsive and flexible in using professional judgments to prevent injury from occurring	R	R	√		√
Having ready access to an operating telephone or other similar means of communication to enable immediate communication to and from parents and emergency services	R	√	√		
Ensuring that staff have access to medication, Incident, Injury, Trauma and Illness forms (<i>refer to Sources</i>) and WorkSafe Victoria incident report forms (<i>refer to Sources</i>)	R	√			
Ensuring that the service has an <i>Occupational Health and Safety policy</i> and procedures that outline the process for effectively identifying, managing and reviewing risks and hazards that are likely to cause injury, and reporting notifiable incidents to appropriate authorities (<i>refer to Occupational Health and Safety Policy</i>)	R	√	√		
Ensuring that there is a minimum of one educator with a current (within the previous 3 years) approved first aid qualification on the premises at all times (<i>refer to Administration of First Aid Policy</i>)	R	√			

<p>As a demonstration of duty of care and evidence-based practice, ELAA recommends that all early childhood teachers and educators have current (within the previous 3 years) approved first aid qualifications, anaphylaxis management training and asthma management training.</p>					
Ensuring that there are an appropriate number of up-to-date, fully equipped first aid kits that are accessible at all times (<i>refer to Administration of First Aid Policy</i>)	R	√	√		
Ensuring that children's enrolment forms contain all the prescribed information, including authorisation for the service to seek emergency medical treatment by a medical practitioner, hospital or ambulance service (<i>Regulations 161</i>)	R	√		√	
Notifying the service, upon enrolment or diagnosis, of any medical conditions and/or needs, and any management procedure to be followed with respect to that condition or need (<i>Regulation 162</i>)				√	
Informing the service of an infectious disease or illness that has been identified while the child has not attended the service, and that may impact on the health and wellbeing of other children, staff and parents/guardians attending the service				√	
Ensuring that the service is provided with a current medical management plan (<i>refer to Definitions</i>), if applicable (<i>Regulation 162(d)</i>)				√	
Notifying the service when their child will be absent from their regular program				√	
<p>Notifying staff/educators if there is a change in the condition of a/their child's health, or if there have been any recent accidents or incidents that may impact on the child's care e.g. any bruising or head injuries.</p> <p>Part of the Child Safe Standards, it is important that if a child presents upon arrival to the service with any visible injury or trauma, this should be discussed and documented prior to the parent/guardian leaving the service (<i>refer to Child Safe Environment and Wellbeing policy</i>)</p>	R	√	√	√	√
Responding immediately to any incident, injury or medical emergency (<i>refer to procedures and Administration of First Aid policy</i>)	R	R	R		
Ensuring that a parent/guardian of the child is notified as soon as is practicable, but not later than 24 hours after the occurrence, if the child is involved in any incident, injury, trauma or illness while at the service (<i>Regulation 86</i>)	R	√	√		
Notifying other person/s as authorised on the child's enrolment form when the parents/guardians are not contactable	R	√	√		

Considering the emotional wellbeing of all children and educators during and following an accident, injury, trauma or illness events	√	√	√		
Ensuring that regulatory and legislative responsibilities are met in relation to any incident, injury or medical emergency	R	√	√		
Ensuing notifications of serious incidents (<i>refer to Definitions</i>) are made to the regulatory authority (DE) (<i>refer to Definition</i>) through the NQA IT System (<i>refer to Definitions</i>) as soon as is practicable but not later than 24 hours after the occurrence	R	√			
Ensuring that management and reporting of incidents is in accordance with the organisation steps incl Elumina and leaderships of reporting incidents (including emergencies) process	R	√	√		√
Recording details of any incident, injury or illness in the Incident, Injury, Trauma and Illness Record (<i>refer to Definitions</i>) as soon as is practicable but not later than 24 hours after the occurrence	R	√			
Signing the Incident, Injury, Trauma and Illness Record, thereby acknowledging that they have been made aware of the incident				√	
Reviewing and evaluating procedures after an incident or illness as part of the quality improvement process and taking appropriate action to remove the cause if required. For example, removing a nail found protruding from climbing equipment or retraining staff to adhere more closely to the service's <i>Hygiene Policy</i>	R	√	√		
Ensuring that completed medication records are kept until the end of 3 years after the child's last attendance (<i>Regulation 92, 183</i>)	R	√			
Ensuring that Incident, Injury, Trauma and Illness Records are maintained and stored securely until the child is 25 years old (<i>Regulations 87, 183</i>) (<i>refer to Privacy and Confidentiality Policy</i>)	R	√			
Communicating with families about children's health requirements in culturally sensitive ways and implementing individual children's medical management plans, where relevant	R	√	√	√	
Being contactable, either directly or through emergency contacts listed on the child's enrolment form, in the event of an incident requiring medical attention				√	
Requesting the parents/guardians make arrangements for the child or children involved in an incident or medical emergency to be collected from the service, or informing parents/guardians if an ambulance has been called	R	√	√	√	
Collecting their child as soon as possible when notified of an incident, injury or medical emergency involving their child				√	
Arranging payment of all costs incurred when an ambulance service required for their child at the service				√	



PROCEDURES

Ensuring that the following contact numbers are displayed in close proximity of each telephone:

- 000
- DE regional office
- Approved provider
- Asthma Australia: 1800 278 462
- Victorian Poisons Information Centre: 13 11 26
- Local council or shire.

When there is a medical emergency, all staff will:

- call an ambulance, where necessary
- administer first aid, and provide care and comfort to the child prior to the parents/guardians or ambulance arriving
- implement the child's current medical management plan, where appropriate
- notify parents/guardians as soon as is practicable of any serious medical emergency, incident or injury concerning the child, and request the parents/guardians make arrangements for the child to be collected from the service and/or inform the parents/guardians that an ambulance has been called
- notify other person/s as authorised on the child's enrolment form, if the parents/guardians are not contactable
- ensure ongoing supervision of all children in attendance at the service
- accompany the child in the ambulance when the parents/guardians are not present, provided that staff-to-child ratios can be maintained at the service
- notify the approved provider of the medical emergency, incident or injury as soon as is practicable
- complete and submit an incident report to DE, the approved provider and the service's public liability insurer following a serious incident.

When a child develops symptoms of illness while at the service, all staff will:

- observing the symptoms of children's illnesses and injuries and systematically recording and sharing this information with families (and medical professionals where required)
- ensure that the nominated supervisor, or person in day-to-day care of the service, contacts the parents/guardians or authorised emergency contact for the child
- request that the child is collected from the service if the child is not well enough to participate in the program
- ensure that they separate the child from the group and have a staff member remain with the child until the child recovers, a parent/guardian arrives or another responsible person takes charge
- call an ambulance (*refer to Definition of medical emergency*) if a child appears very unwell or has a serious injury that needs urgent medical attention
- ensure that the child is returned to the care of the parent/guardian or authorised emergency contact person as soon as is practicable
- ensure that, where medication, medical or dental treatment is obtained, the parents/guardians are notified as soon as is practicable and within 24 hours, and are provided with details of the illness and subsequent treatment administered to the child
- ensure that the approved provider is notified of the incident
- ensure that the Incident, Injury, Trauma and Illness Record is completed as soon as is practicable and within 24 hours of the occurrence.

Details that must be entered in the Incident, Injury, Trauma and Illness Record include the following:

- the name and age of the child
- the circumstances leading to the incident, injury or trauma, or relevant circumstances surrounding the child becoming ill (including any symptoms)
- the time and date the incident occurred, the injury was received or the child was subjected to the trauma, or the apparent onset of the illness
- the action taken by the service, including any medication administered, first aid provided or medical personnel contacted
- details of any person who witnessed the incident, injury or trauma, or the apparent onset of illness
- the name of any person the service notified, or attempted to notify, of any incident, injury, trauma or illness that a child suffered while being educated and cared for by the service, and the time and date of the notifications/attempted notifications
- the name and signature of the person making an entry in the record, and the time and date that the entry was made
- signature of a parent/guardian to verify that they have been informed of the occurrence.

All information will be included in the Incident, Injury, Trauma and Illness Record as soon as is practicable, but not later than 24 hours after the incident, injury or trauma, or the onset of the illness.



BACKGROUND AND LEGISLATION

BACKGROUND

People responsible for managing early childhood services and caring for children have a duty of care towards those children. All service staff have a responsibility and a duty of care to act to prevent accidents and emergencies at the service.

An approved service must have policies and procedures in place in the event that a child is injured, becomes ill or suffers trauma. These procedures should be followed and must include the requirement that a parent/guardian be notified in the event of an incident, injury, illness or trauma relating to their child as soon as possible and within 24 hours of the occurrence.

The [National Regulations](#) require an accurate Incident, Injury, Trauma and Illness Record to be kept and stored confidentially until the child is 25 years old ([Regulation 183\(2\)](#)).

Under the national legislation, each service must ensure that an entry is recorded in the Incident, Injury, Trauma and Illness Record for the following occurrences:

- an incident in relation to a child, an injury received by a child or trauma to which a child has been subjected
- an illness that becomes apparent.

Medical emergencies may include serious health issues such as asthma, anaphylaxis, diabetes, fractures, choking and seizures. Such emergencies generally involve only one child, however they can affect everyone in the children's service. In some cases it will be appropriate to refer to specific policies for guidance, such as the [Dealing with Medical Conditions Policy](#), [Asthma Policy](#), [Anaphylaxis and Allergic Reactions Policy](#), [Diabetes Policy](#) and [Epilepsy and Seizures Policy](#).

LEGISLATION AND STANDARDS

Relevant legislation and standards include but are not limited to:

- Australian Standards AS3745–2002, Emergency control procedures for buildings, structures and workplaces
- Education and Care Services National Law Act 2010: Section 174(2)
- Education and Care Services National Regulations 2011: Regulations 77, 85–87, 103, 177, 183

- Public Health and Wellbeing Act 2008 (Vic)
- Public Health and Wellbeing Regulations 2009 (Vic)
- Occupational Health and Safety Act 2004 (Vic)
- Occupational Health and Safety Regulations 2007
- WorkSafe Victoria Compliance Code: First aid in the workplace (2008)
- National Quality Standard, Quality Area 2: Children's Health and Safety
- National Quality Standard, Quality Area 3: Physical Environment
- National Quality Standard, Quality Area 7: Governance and Leadership
- Therapeutic Goods Act 1989 (Cth)

The most current amendments to listed legislation can be found at:

- Victorian Legislation – Victorian Law Today: www.legislation.vic.gov.au
- Commonwealth Legislation – Federal Register of Legislation: www.legislation.gov.au



DEFINITIONS

The terms defined in this section relate specifically to this policy. For regularly used terms e.g. Approved Provider, Nominated Supervisor, Notifiable complaints, Serious Incidents, Duty of Care, etc. refer to the Definitions file of the PolicyWorks catalogue.

Emergency services: Includes ambulance, fire brigade, police and state emergency services.

First aid: Is the immediate treatment or care given to a person suffering from an injury or illness until more advanced care is provided or the person recovers. First aid training should be delivered by approved first aid providers, and a list is published on the ACECQA website: www.cecqa.gov.

Hazard: A source or situation with a potential for harm in terms of human injury or ill health, damage to property, damage to the environment or a combination of these.

Illness: Any sickness and/or associated symptoms that affect the child's normal participation in the program at the service.

Incident, Injury, Trauma and Illness Record: Contains details of any incident, injury, trauma or illness that occurs while the child is being educated and cared for by the service. The Approved Provider must ensure an Injury, Trauma and Illness Record is kept in accordance with *Regulation 87 of the Education and Care Services National Regulations 2011* and kept for the period of time specified in *Regulation 183*. A sample is available on the ACECQA website: www.cecqa.gov (search 'Sample forms and templates').

Incident: Any unplanned event resulting in or having potential for injury, ill health, damage or other loss.

Injury: Any physical damage to the body caused by violence or an incident.

Medical attention: Includes a visit to a registered medical practitioner or attendance at a hospital.

Medical emergency: An injury or illness that is acute and poses an immediate risk to a person's life or long-term health.

Medication: Medicine within the meaning of the *Therapeutic Goods Act 1989* of the Commonwealth. Medicine includes prescription, over-the-counter and complementary medicines. All therapeutic goods in Australia are listed on the Australian Register of Therapeutic Goods, available on the Therapeutic Goods Administration website tga.gov.au

Minor incident: An incident that results in an injury that is small and does not require medical attention.

Trauma: An emotional wound or shock that often has long-lasting effects or any physical damage to the body caused by violence or an incident.



SOURCES AND RELATED POLICIES

SOURCES

- ACECQA sample forms and templates: www.acecqa.gov.au
- Building Code of Australia: www.abcb.gov.au
- Staying Healthy: Preventing infectious diseases in early childhood education and care services (5th edition, 2013) National Health and Medical Research Council: www.nhmrc.gov.au
- VMIA Insurance Guide, Community Service Organisations program: www.vmia.vic.gov.au
- WorkSafe Victoria: Guide to Incident Notification: www.worksafe.vic.gov.au
- WorkSafe Victoria: Online notification forms: www.worksafe.vic.gov.au

RELATED POLICIES

- Administration of First Aid
- Administration of Medication
- Anaphylaxis and Allergic Reactions
- Asthma
- Child Safe Environment and Wellbeing
- Dealing with Infectious Diseases
- Dealing with Medical Conditions
- Delivery & Collection of Children
- Diabetes
- Emergency and Evacuation
- Epilepsy and Seizures
- Excursions and Service Events
- Hygiene
- Occupational Health and Safety
- Privacy and Confidentiality
- Road Safety and Safe Transport



EVALUATION

In order to assess whether the values and purposes of the policy have been achieved, the approved provider will:

- regularly seek feedback from everyone affected by the policy regarding its effectiveness
- monitor the implementation, compliance, complaints and incidents in relation to this policy
- review and analyse information gathered from the Incident, Injury, Trauma and Illness Record and staff first aid records regarding incidents at the service
- keep the policy up to date with current legislation, research, policy and best practice
- revise the policy and procedures as part of the service's policy review cycle, or as required
- notify all stakeholders affected by this policy at least 14 days before making any significant changes to this policy or its procedures, unless a lesser period is necessary due to risk (*Regulation 172 (2)*).



ATTACHMENTS

- Attachment 1: Hazard Identification Checklist
- Attachment 2: Environmental Safety Checklist

- Attachment 3: Incident, injury, illness and trauma record – kindergarten
- Attachment 4: Sample Notice of Infectious Illness or Disease



AUTHORISATION

This policy was adopted by the approved provider of Golden Plains Shire Council on 25/03/2024.

REVIEW DATE: 25/03/2026

ATTACHMENT 1: SAMPLE HAZARD IDENTIFICATION CHECKLIST

Service: _____

Date: _____

Inspected by: _____

Hazard	Yes	No	Comments
1. Floors			
Surface is even and in good repair			
Surface is free from tripping and slipping hazards (e.g. oil, water, sand)			
Surface is safe (e.g. not likely to become excessively slippery when wet)			
2. Kitchen and work benches			
Work bench space is adequate and at comfortable working height			
Kitchen and work bench space is clean and free of clutter			
Equipment not in use is properly stored			
Lighting is satisfactory			
A door or gate restricts child access to the kitchen			
Ventilation fan is in good working order			
Kitchen appliances are clean and in good working order			
3. Emergency evacuation			
Staff have knowledge of fire drills and emergency evacuation procedures			
Fire drill instructions are displayed prominently in the service			
Regular fire drills are conducted			
Extinguishers are in place, recently serviced and clearly marked for type of fire			
Exit signs are posted and clear of obstructions			
Exit doors are easily opened from inside			
4. Security and lighting			
Security lighting is installed in the building and car park			
There is good natural lighting			
There is no direct or reflected glare			
Light fittings are clean and in good repair			

Emergency lighting is readily available and operable (e.g. torch)			
5. Windows			
Windows are clean, admitting plenty of daylight			
Windows have no broken panes			
6. Steps and landings			
All surfaces are safe			
There is adequate protective railing which is in good condition			
7. Ladders and steps			
Ladders and steps are stored in a proper place			
Ladders and steps are free of defects (e.g. broken or missing rungs etc.)			
They conform to Australian Standards			
They are used appropriately to access equipment stored above shoulder height			
8. Chemicals and hazardous substances			
All chemicals are clearly labelled			
All chemicals are stored in locked cupboard			
Material Safety Data Sheets (MSDS) are provided for all hazardous substances			
9. Storage (internal and external)			
Storage is designed to minimise lifting problems			
Materials are stored securely			
Shelves are free of dust and rubbish			
Floors are clear of rubbish or obstacles			
Dangerous material or equipment is stored out of reach of children			
10. Manual handling and ergonomics			
Trolleys or other devices are used to move heavy objects			
Heavy equipment (such as planks and trestles) is stored in a way that enables it to be lifted safely			
Adult-sized chairs are provided and used for staff (to avoid sitting on children's chairs)			
Workstations are set up with the chair at the correct height			
Workstations are set up with phone, mouse and documents within easy reach and screen adjusted properly			

Work practices avoid the need to sit or stand for long periods at a time			
11. Electrical			
There are guards around heaters			
Equipment not in use is properly stored			
Electrical equipment has been checked and tagged			
Use of extension leads, double adaptors and power boards are kept to a minimum			
Plugs, sockets or switches are in good repair			
Leads are free of defects and fraying			
Floors are free from temporary leads			
There are power outlet covers in place			
12. Internal environment			
Hand-washing facilities and toilets are clean and in good repair			
There is adequate ventilation around photocopiers and printers			
13. First aid and infection control			
Staff have current approved first aid qualifications and training			
First aid cabinet is clearly marked and accessible			
Cabinet is fully stocked and meets Australian Standards (refer to <i>Administration of First Aid Policy</i>)			
Disposable gloves are provided			
Infection control procedures are in place			
Current emergency telephone numbers are displayed			
14. External areas			
Fencing is secure, unscalable and of a height prescribed by the Building Code of Australia (no breaches in the fence or materials left adjacent that would assist children to scale the fence)			
Child-proof locks are fitted to gates			
Paving and paths have an even surface and are in good repair			
Paving and path surfaces are free of slipping hazards, such as sand			
Soft-fall and grass areas are free of hazards			
Equipment and materials used are in good repair and free of hazards			

ATTACHMENT 2: SAMPLE ENVIRONMENT SAFETY CHECKLIST

Golden Plains Shire Children's Services – Environment Safety Checklist.

[Name of Kindergarten]

Week Beginning (DATE):	MON		TUE		WED		THU		FRI	
	AM	PM	AM	PM	AM	PM	AM	PM	AM	PM
DAILY										
Doors unlocked incl. children's toilet doors										
Grounds are free of hazards inc. rubbish, water collection, garden tools, trip hazards, vandalism										
Snake/spiders check: also looking for potential snake hiding places										
Gates are secure and in working order - emergency exit gate padlocks are in working order.										
Equipment and toys are in a safe and suitable condition for use. Broken toys removed.										
Nothing near any fence or gate that would assist children to climb over. Fences are in good repair.										
Fixed outdoor equipment inc. tyres, storage boxes etc. are free of objects or animals/insects inside/under/behind.										
Sandpit is clear of foreign objects and raked as appropriate.										
Soft fall area is clear of foreign objects and items that may be a hazard if children fell. Spread evenly under equipment eg swings										
Rubbish awaiting collection is inaccessible to children and stored appropriately										
Outdoor yard is set up in accordance with plan										
Paths are swept and clear of sand.										
Brooms, shovels etc put away after use.										
Adequate paper towel and soap available to the children										
Verandas clean and tidy										
Staff of duty have keys readily available where needed to unlock exit gates and storage areas										
Building has no maintenance issues										
List items here relevant to each location										

WEEKLY CHECK: <input type="checkbox"/> Padlocks on gates physically opened to check operation <input type="checkbox"/> Vegetation trimmed, lawns mowed inside and outside perimeter fencing <input type="checkbox"/> Any items to be reported for maintenance or added to family gardening roster <input type="checkbox"/> Inspect soft fall: sufficient and not compacted <input type="checkbox"/> Sheds clean and are safe to enter and exit Task performed by: Name: Signature:	Comments									
MONTHLY CHECK: <input type="checkbox"/> Soft fall: is depth to 30cms across play equipment area, not compacted etc <input type="checkbox"/> Tissues/wipes available outdoors <input type="checkbox"/> Snake catcher signage clearly viewed from indoors and outdoors <input type="checkbox"/> Sheds inspected for safe use <input type="checkbox"/> Shelves in playrooms clear or only have items relevant to children <input type="checkbox"/> Chemical storage areas checked for safety and clear signage, clear labels on all decanted products <input type="checkbox"/> SDS storage area & First aid kits: located and clearly labelled for ease of access <input type="checkbox"/> First aid kit, children/staff medication expiry dates checked and followed up <input type="checkbox"/> Emergency backpacks in identified location, have current lists of children, medications/plans accessible for emergency collection <input type="checkbox"/> Timber equipment and other wooden items such as garden bed edging are free of splinter risks. <input type="checkbox"/> Are rodent/insect control measures working? Check performed by: Date:										
TERMLY: <input type="checkbox"/> End of term security check prior to holidays <input type="checkbox"/> Do carpets need cleaning? <input type="checkbox"/> List of items to be cleaned distributed to cleaners <input type="checkbox"/> Garden & pet feeding rosters in place for break <div style="text-align: right;">Check performed by: Date:</div>										
Nominated Supervisor weekly sign off: Name/Initials of person completing check.										

Over summer months/warmer weather – staff are to check common places for snakes before taking children outside prior to anytime re-entering the playground.

Items to report for maintenance:

Urgent	Non urgent	Detail	Reported by	Reported to/date
		1.		
		2.		
		3.		

*Please keep all docs on file for the year.

ATTACHMENT 3: INCIDENT, INJURY, ILLNESS AND TRAUMA RECORD – KINDERGARTEN



Incident, injury, illness and trauma record – Kindergarten

(Circle relevant type of record)

Child details

Surname: Given names:

Date of birth:/...../..... Age:

Room/group:

Incident/injury/trauma details

Incident/injury/trauma

Circumstances leading to the incident/illness/injury/trauma:

.....
.....
.....

Products or structures involved:

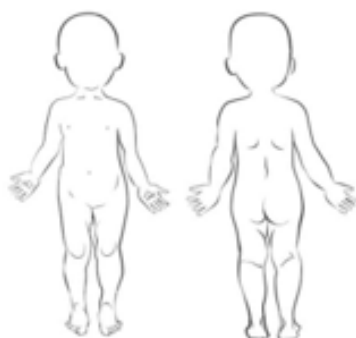
.....
.....

Location: Time: am/pm Date:/...../.....

Name of witness:

Signature: Date:/...../.....

Nature of injury sustained:



- | | |
|---|---|
| <input type="checkbox"/> Abrasion, scrape | <input type="checkbox"/> Cut |
| <input type="checkbox"/> Bite | <input type="checkbox"/> Rash |
| <input type="checkbox"/> Broken bone / fracture | <input type="checkbox"/> Sprain |
| <input type="checkbox"/> Bruise | <input type="checkbox"/> Swelling |
| <input type="checkbox"/> Burn | <input type="checkbox"/> Other (please specify) |
| <input type="checkbox"/> Concussion | |

2 Pope Street, Bannockburn, Victoria 3331

☎ 5220 7111

✉ enquiries@gpains.vic.gov.au

🌐 goldenplains.vic.gov.au

FIND US EVERYWHERE!



GoldenPlainsShire
GoldenPlainsEarlyYears



@GPSCouncilNews
@Golden_Plains

Action Taken

Details of action taken, including first aid administration of medication:

.....

Medical personnel contacted: Yes / No

If yes, provide details:

.....

Details of person completing this record

Name: Signature:

Time record was made: am/pm Date record was made/...../.....

Notifications (including attempted notifications)

Parent/guardian: Time: am/pm Date:/...../.....

Director/teacher/coordinator: Time: am/pm Date:/...../.....

Regulatory authority (if applicable): Time: am/pm Date:/...../.....

Parental acknowledgement:

I

(name of parent/guardian)

have been notified of my child's incident/injury/trauma/illness.

(Please circle)

Signature: Date:/...../.....

Additional notes / follow up:

.....

.....

.....

.....

.....

.....

.....

.....

ATTACHMENT 4: SAMPLE NOTICE OF INFECTIOUS ILLNESS OR DISEASE



GOLDEN PLAINS SHIRE

NOTICE OF INFECTIOUS ILLNESS OR DISEASE

2023

ILLNESS	XXXXXXXXXXXX XXXXXXXXXXXX
CENTRE AFFECTED	XXXXXXXXXXXX Kindergarten
INCIDENCE	XX confirmed case
MORE INFORMATION	You can find an information leaflet displayed at attendance record

Important: For confidentiality reasons, the names of affected staff or children as well as the details of the service area where the infectious disease or illness was reported, cannot be provided.

2 Pope Street, Bannockburn, Victoria 3331

☎ 5220 7111

✉ enquiries@gplains.vic.gov.au

🌐 goldenplains.vic.gov.au

FIND US EVERYWHERE!



GoldenPlainsShire
GoldenPlainsEarlyYears



@GPSCouncilPlains
@Golden_Plains