

# MUNICIPAL PUBLIC HEALTH AND WELLBEING PLAN 2021-2025

## YEAR 2 MONITORING & EVALUATION REPORT

### MUNICIPAL PUBLIC HEALTH AND WELLBEING PLAN PRIORITIES



IMPROVING MENTAL WELLBEING



INCREASING ACTIVE LIVING



PREVENTING FAMILY VIOLENCE  
AND ADVANCING GENDER EQUITY



INCREASING HEALTHY EATING



TACKLING CLIMATE CHANGE  
AND ITS IMPACT ON HEALTH

### MONITORING AND EVALUATING THE MPHWP ACTION PLAN

#### WE ASK

- What did we do?
- How well did we do it?
- COVID-19 Impacts?
- What are the changes we are seeing?

#### PARTNER FORUM

- Forward planning
- Reflections, ideas and knowledge sharing

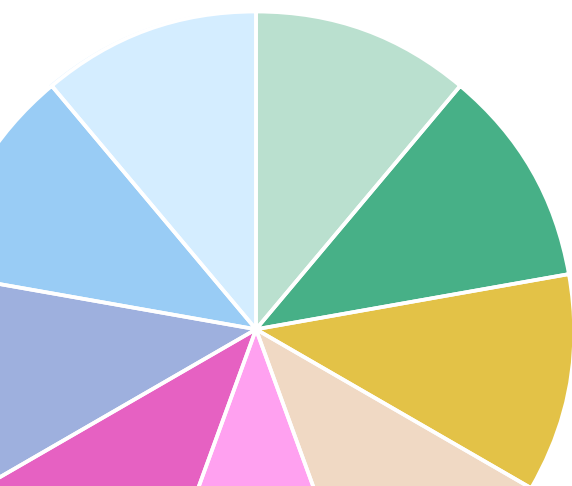
## PARTNER ANALYSIS



**26** **PARTNERS**  
**14** + **12**  
 EXTERNAL INTERNAL

**147** **ADDITIONAL CONTRIBUTORS ACROSS 9 SECTORS:**

- Health organisations
- Local sporting clubs
- State-wide and national sporting agencies
- Local community groups
- Service providers
- Government agencies and departments
- Education institutions
- NFP organisations
- Other businesses



## PARTNERS

### External

Ballarat Community Health (Ballarat)

Ballarat Community Health (Dereel)

Bannockburn Surgery

Barwon Public Health Unit

Geelong Regional Library Corporation

Geelong YMCA

Haddon Community Learning Centre

Hesse Rural Health

Leisure Networks

MELI- Barwon Child Youth and Family

Meredith Community Centre

Sports Central

Women's Health Grampians

Western Victoria PHU

### Internal

Golden Plains Shire, Active Ageing and Inclusion

Golden Plains Shire, Community Development

Golden Plains Shire, Community Safety

Golden Plains Shire, Economic Development

Golden Plains Shire, Environment and Open Spaces

Golden Plains Shire, Health and Wellbeing

Golden Plains Shire, Kindergartens

Golden Plains Shire, Maternal and Child Health

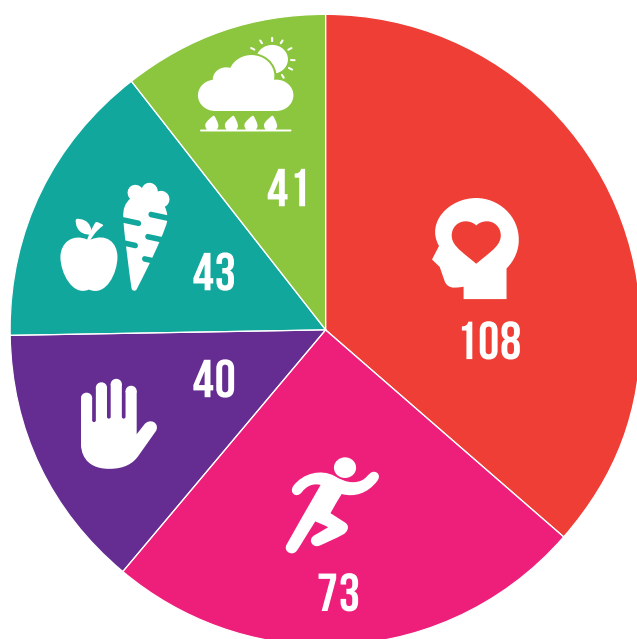
Golden Plains Shire, People, Performance and Governance

Golden Plains Shire, Recreation and Community Facilities

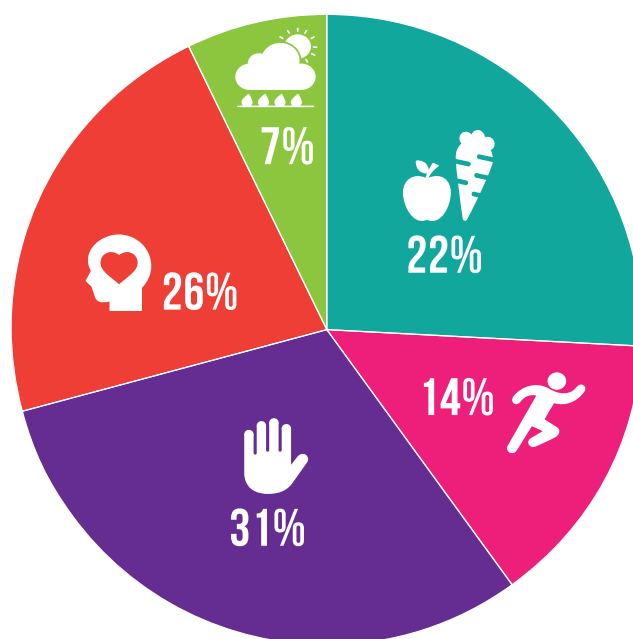
Golden Plains Shire, Strategic Planning

Golden Plains Shire, Youth

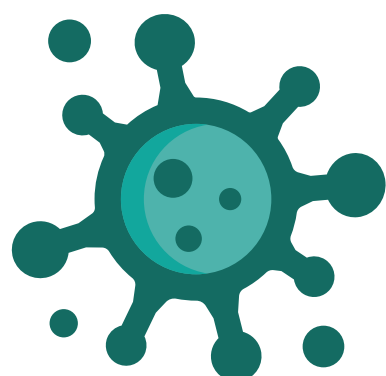
# MPHWP ACTIVITIES



**295** ACTIVITIES EVALUATED



**30%** ACTIVITIES UNDERWENT IMPACT EVALUATION

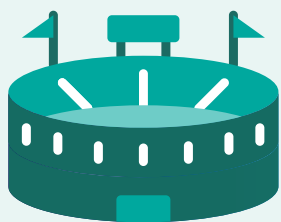


## IMPACT OF COVID-19

**12%**  
Activities impacted



**59%**  
Compared to 59% last year



Is more than the capacity of Marvel stadium.



Is approximately the same number of people who attended the 2023 U.S NFL Superbowl.



# 72,623

## ESTIMATED REACH FOR ALL ACTIVITIES



Is **three times** the population of the Golden Plains Shire.



Far exceeds the average Taylor Swift concert capacity.



## IMPACT AREAS

**BEHAVIOUR**  
Finance/funding  
Skills and confidence  
**KNOWLEDGE AND AWARENESS**  
Environments

Leveraging off experts  
Program delivery  
Highly engaged partners  
**COLLABORATION**  
COMMUNITY INVOLVEMENT

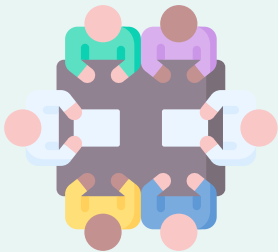


## KEY SUCCESSES

## OPPORTUNITIES



Improved Evaluation  
Better Promotion  
**INCREASED RESOURCES**  
More Leadership engagement  
**ENHANCED CAPACITY BUILDING**



## TARGET GROUPS

Carers  
MIDDLE CHILDHOOD YEARS  
**FINANCIALLY VULNERABLE**  
Culturally and Linguistically Diverse (CALD)  
Volunteers

LIMITED RESOURCES  
Financial insecurity  
**MENTAL WELLBEING**  
Continued food insecurity  
Housing insecurity  
**CLIMATE EMERGENCY**  
Severe weather events



## EMERGING THREATS



## NEW IDEAS

Better evaluation  
Stay flexible  
INTEGRATING PRIORITIES TO IMPROVE EFFICIENCY  
Intergenerational programming  
**LEVERAGING OFF BIG EVENTS**