

JUNE, 2023



3 | Sculpture unveiled in Linton

6 | A scenario for growth in Golden Plains

8 | Celebrating Volunteers in the Shire



A Message from the Mayor

Summer has come to an end and we are now heading into cooler nights as we settle in for the winter season.

Despite the cooler weather, as we head into the Victorian school holidays, we look forward to seeing our region overrun with families taking in our local delights, community events and relaxed lifestyle.

We’ve recently had a number of great community openings including the opening of the Ross Creek Play and Active Rec Upgrade Project, the Vera Scantlebury Brown Sculpture in Linton, and the Rokewood Netball/Tennis Courts upgrade project. Head to pages 3 and 5 for a snapshot of some of these fantastic opening events.

It has been a busy time for our Draft Budget 2023/24 preparations. Submissions received will be considered by Council in early June and tabled for Council consideration at the 27 June meeting. The budget is one of the most important processes we complete as a local government organisation, and I’d like to thank the community for their feedback throughout our Draft Budget journey.

As part of this year’s Budget, we have allocated the most funding we’ve ever put into roads with \$2.7 million allocated to road repairs and maintenance, and \$3.4 million towards road improvements. This money will be spread across resealing and re-sheeting roads, repairing roads and doing a lot more heavy patching. Heavy patching is a more complex process but will give those roads greater durability.

Council has also received an additional \$770,000 from the latest round of the Federal Government’s Local Roads and Community Infrastructure (LRCI) Program, in addition to the over \$1.3 million already allocated to Golden Plains under Phase 4 of the LRCI Program. The additional funding will be used to repair Slate Quarry Road in Meredith. Further information on this funding can be found on page 4.

We understand the community experiences frustration with the condition of roads in the Shire, and we empathise with our residents, however crews are doing their best to complete this often thankless task and we are proud of the work they do.

For Council, road maintenance will always be an ongoing challenge as we deal with roads in the flood-impacted areas and gravel roads in steep terrain. To keep on top of road works, Council has to balance the funds we have and prioritise critical road repairs based on road use. This dictates just how far can we reconstruct or repair a road to maintain safety on our extensive road network.

I am thrilled to share with you that we have recently added to our road plant fleet a new Komatsu PC78 excavator which will help us improve roadside drainage across the Shire, with a focus on the northern areas. Council has hired an additional two new staff to manage the excavator’s operation and ensure we can get to work as quickly as possible.

In closing, on behalf of Council and the wider community I’d also like to acknowledge the wonderful work our amazing volunteers do for our community. Volunteers are the lifeblood of our community and play a vital role, lending their time and talents for no reward or remuneration. This year’s National Volunteer Week theme ‘The Change Makers’ was a perfectly fitting way to recognise the impact of volunteering and those involved who really do drive change within the community. Thank you!

Cr Brett Cunningham
Mayor

COUNCIL BUDGET TIMELINE 2023/24

2023

2024

Jan-Feb	March	April	May	June		July
PREPARE DRAFT BUDGET 2023/24	COMMUNITY ENGAGEMENT	COUNCIL MEETING – 26 APRIL	DRAFT BUDGET ON PUBLIC EXHIBITION	SPECIAL COUNCIL MEETING - 6 JUNE	COUNCIL MEETING – 27 JUNE	IMPLEMENTATION OF 2023/24 BUDGET
	REVIEW AND ADJUST DRAFT BUDGET	ENDORSEMENT OF DRAFT BUDGET FOR PUBLIC EXHIBITION		PUBLIC SUBMISSIONS	ADOPTION OF DRAFT BUDGET	



Linton Born Female War Surgeon Honoured

In April, Minister for Women, the Hon Natalie Hutchins MP joined Golden Plains Shire Council Mayor Cr Brett Cunningham and members of the public, to unveil a 1.75m bronze sculpture of Linton-born war surgeon and Director of Infant and Maternal Health, Dr Vera Scantlebury Brown OBE.

The sculpture, sculpted by local artist Lucy McEachern, is sited in the Linton memorial Avenue of Honour and is the first public artwork in the Shire recognising or representing women.

The artwork was funded by \$116,811 from the Victorian Government's Victorian Women's Public Art Program with an additional \$39,575 (including \$9,680 in-kind) contribution from Council.

The unveiling was a fantastic community event, drawing hundreds of people to the township of Linton and the sculpture will be a valuable addition to Golden Plains.

Council is pleased to have supported this project to highlight Vera's incredible story.

UPGRADED NETBALL AND TENNIS COURTS OPEN IN ROKEWOOD

Member for Eureka, Michaela Settle MP and Golden Plains Shire Mayor Cr Brett Cunningham were joined by Rokewood Corindhap Football Netball Club representatives and local netballers to officially open the upgraded netball and tennis courts.

The project included the reconstruction of two new courts with line markings for both netball and tennis, along with the introduction of sports lighting for competition use.

The upgrade also saw the installation of new fencing, undercover benches for players, coaches, timekeepers, and spectators and an additional storage structure to increase storage of sporting equipment by user groups.

The \$751,000 project received \$433,666 from the Victorian Government's Local Sports Infrastructure Fund Female Friendly Facilities category.

In addition, Council has contributed \$317,334 to complete the funding for this partnership project with significant project delivery support also provided by the user groups at Rokewood Recreation Reserve.



\$2.2M
FOR GOLDEN PLAINS



COUNCIL WELCOMES ADDITIONAL \$770,000 IN FEDERAL FUNDING

Council has welcomed the announcement of an additional \$770,000 in funding under Phase 4 of the Australian Government's Local Roads and Community Infrastructure Program.

The latest allocation of funding is in addition to just over \$1.3 million that Council has already received under Phase 4 of the Local Roads and Community Infrastructure (LRCI) Program, bringing the total funding allocation under Phase 4 to nearly \$2.2 million.

The funding will be available to Councils from July 2023 and Golden Plains Shire Council will submit local projects meeting the funding requirements to the Federal Government for approval.

Council is committed to restoring its road networks following the unprecedented flooding events in 2022, and this vital funding will go a long way in supporting Council to deliver the much-needed upgrades and repairs across the Shire.

To view the list of projects endorsed by Council to share in the LRCI funding, visit:
goldenplains.vic.gov.au/news

EDIBLE GARDENS RETURNS TO THE SHIRE

Following great success both in 2021 and 2022, Golden Plains Shire Council's popular Edible Gardens program has returned with a new, free webinar series.

The webinar series features free monthly sessions with each session exploring common challenges for gardeners, including constraints on time and space in difficult growing climates, and how to overcome these obstacles. Participants also have the opportunity to tackle gardening problems unique to rural areas.

The series features the return of qualified horticulturist Craig Castree, who has been crafting his own organic foods at home for the past 45 years. Craig presents practical, easy and affordable edible gardening solutions in the series.

To register for one or more sessions, visit:
goldenplains.vic.gov.au/edible-gardens



INVERLEIGH TREE SUCCESSION PLAN UNDERWAY

Following extensive consultation with the community, Council has commenced works to deliver the Inverleigh Tree Succession Plan, with stage one beginning in May to remove trees throughout both the eastern and western entrances to Inverleigh, and at the public camping grounds.

Once the works are complete, mulch will be available to residents at various locations across the Shire with further information to follow.

Planting will commence later in the year following soil assessment and conditioning to prepare the soil for planting.

To learn more, visit the Have Your Say page on Council's website.

ROSS CREEK PLAY AND ACTIVE REC UPGRADE PROJECT OFFICIALLY OPEN

The Ross Creek Play and Active Rec Upgrade Project was officially opened by Member for Ripon, Martha Haylett MP and Golden Plains Shire Mayor Cr Brett Cunningham who were joined by local children from the Woody Yaloak Primary School, Ross Creek campus.



The project delivered all-inclusive play elements and associated walkways along with a fitness space for adults with equipment that encourages muscle stimulation and movement, new barbecue and picnic facilities and expanded walking trails through native bush land at the Ross Creek Recreation Reserve.

The upgrade also includes the installation of perimeter oval drainage, improvements to the vehicle access track within the precinct and beautification of the existing car park and areas encompassing the rotunda.

The Ross Creek Play and Active Space Upgrade is funded by \$450,000 from the Victorian Government's Growing Suburbs Fund and \$100,000 from Council.

Council has received four consecutive rounds of Growing Suburbs Fund support for the Shire with close to \$6.5 million secured through the program since 2020, resulting in nearly \$8.5 million in community infrastructure.

INAUGURAL CAREERS EXPO COMES TO GOLDEN PLAINS

GOLDEN PLAINS
**CAREERS
EXPO**

SATURDAY 24 JUNE
10AM UNTIL 3PM



EXPLORE THE POSSIBILITIES

Young people across the Shire are invited to attend the inaugural Golden Plains Careers Expo at the Bannockburn Cultural Centre on Saturday 24 June 2023 from 10am until 3pm.

The Expo will provide young people the opportunity to see a diversity of education and work pathways and speak to industry professionals attached to universities, skills and training institutions and local industry and employers such as Western Plains Pork, Meredith Dairy and Golden Plains Shire Council.

Exhibitors include Australian Catholic University, Deakin University, Federation University, Federation TAFE, Victoria University, The Gordon TAFE, South West TAFE, CFA, Australian Defence Force, Jobs VIC, Headspace and the Bannockburn YMCA.

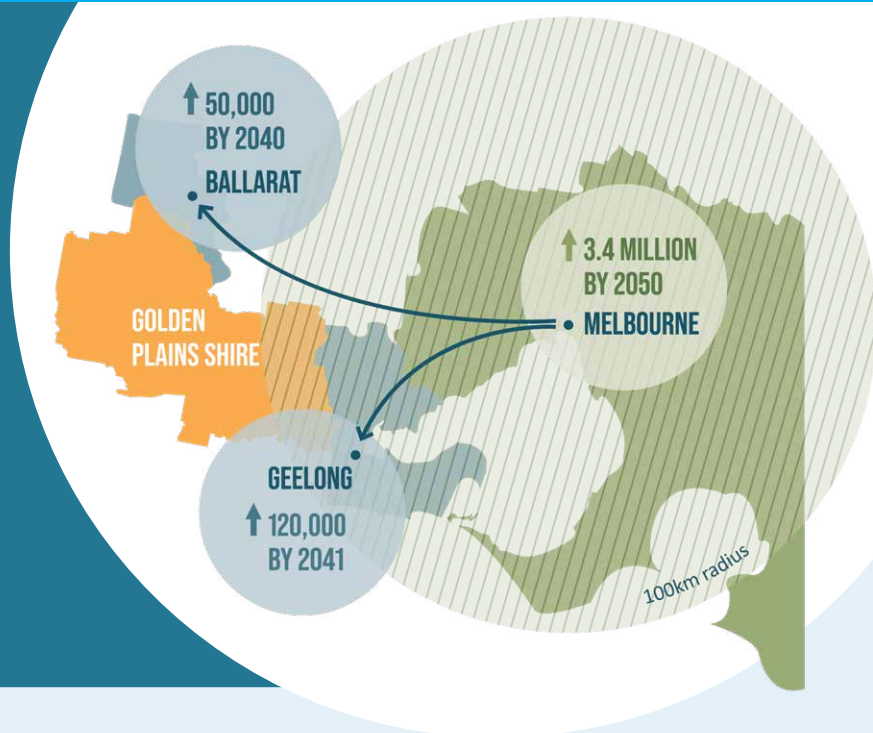
The Golden Plains Careers Expo is funded by a \$299,000 grant from the Victorian Government's Building Safer Communities program and a contribution from Council.

Transport options are available. Please contact Council's Youth Development team on 5220 7111 or email youth@gplains.vic.gov.au to discuss.

To learn more, and to register, visit: goldenplains.vic.gov.au/events

A Scenario for Growth in Golden Plains

If you've travelled to Geelong or Ballarat recently, you will have seen new homes and suburbs emerging, some right up to our Shire borders. Melbourne's population is growing faster than Sydney's, and people need homes to live in.



The State Government requires that every Victorian Council plans for the next 15 years of population change. Its projections (Victoria in Future) say we can expect 2.0 per cent growth per year, but our Independent Housing Needs Assessment (2022) found that growth rates may be higher, around 3.1 per cent per year.

Located between two regional cities, and with areas within 100 kilometres of the Melbourne CBD, this presents some unique opportunities for our Shire to help work towards our Community Vision 2040.

Capturing some of this flow-on growth could bring benefits like new services and infrastructure, a stronger local workforce and new businesses and entertainment options. But growth must be carefully planned to protect our farming areas, environment and country feel.

We're getting on the front foot to carefully plan for increasing growth pressure and we're developing a draft plan for where more housing could go between now and 2050. It's called the Growing Places Strategy (GPS) a draft growth scenario.

The draft growth scenario seeks to balance the benefits of population growth with the importance of preserving Golden Plains' uniqueness by:

- Extending growth that is already happening along our borders where growth is supported by existing services and infrastructure (Cambrian Hill and areas around Stonehaven)
- Focussing growth where it can attract investment in services and infrastructure to benefit a township within proximity to Melbourne and the communities around Melbourne (Meredith, Teesdale, Lethbridge)

This is in addition to the plans already in place for growth around Bannockburn.

The growth scenario is being informed by independent expert research, consultation with local and regional stakeholders, and the aspirations of the Community Vision 2040.

We're currently talking with the community to explain the process, answer any questions and understand if there are any other important factors we should consider or investigate.

Visit goldenplains.vic.gov.au/consultations to find out more and to watch a short video that explains the plan.

**JOIN THE
COMMUNITY
ENGAGEMENT
REGISTER**



Join the Community Engagement Register to receive *Engage*, Council's monthly engagement e-newsletter.



Complete the simple web form at goldenplains.vic.gov.au/community-engagement-register



Email communityengagement@gplains.vic.gov.au

SMYTHESDALE SUB-REGIONAL PLAY SPACE PROJECT

HAVE YOUR SAY

Residents in the north of the Shire were invited to have their say on a concept design of the proposed Smythesdale Sub-Regional Play Space at the Woody Yaloak Recreation Reserve.

Features included in the concept design that were identified as important to users of the Play Space and broader community include a play tower and multi play unit, range of swings and flying fox, natural and sensory play elements, spinning, jumping and climbing play equipment, exercise equipment, sand play area, scooter circuit trail, seating and shade areas, accessible barbeques and picnic facilities and a central accessible path.

The concept design also features amenities such as a toilet facility, accessible path connection to the Woody Yaloak Recreation Reserve and Ballarat-Skipton Rail Trail, safe crossing points, accessible car parking spaces, a bike maintenance station, wayfinding signage and security lighting.

With a confirmed design, Council can advocate at a State and Federal level for funding to deliver the proposed play space.



BANNOCKBURN SKATE BOWL CONCEPT DESIGN

The community was recently invited to view and provide feedback on the proposed concept design of the Bannockburn Skate Bowl which is set to be constructed as part of the second stage of the Bannockburn Skate Park upgrade project.

The second stage of the Bannockburn Skate Park upgrade project will extend the current skate park to cater to intermediate and advanced skaters, while providing a space for young people in the Shire to stay active, healthy and engaged.

Along with the skate bowl, the concept design also includes supporting infrastructure such as lighting, furniture, landscaping and a shelter.

Stage two of the Bannockburn Skate Park Upgrade is funded by \$805,000 from the Victorian Government's Growing Suburbs Fund. Construction is set to begin in 2024.





Exhibition celebrates Volunteers in Golden Plains Shire



To celebrate National Volunteer Week, held between 15 to 21 May 2023, Council launched its Volunteers In Action Photographic exhibition at the Bannockburn Cultural Centre.

The photographs in the Volunteers in Action exhibition showcase Golden Plains Shire volunteers in action and were captured by Golden Plains Youth from the FReeZA Youth Events Crew, who visited volunteers in their communities to capture them doing what they love.

The Volunteers in Action exhibition aims to capture moments that go unnoticed and highlight the everyday, helping the community gain new appreciation for the contributions volunteers make to Golden Plains Shire.

The Volunteers In Action Photographic Exhibition will be on display across the Shire at the following times:

18 May to 29 August at the Bannockburn Cultural Centre, 27 High Street, Bannockburn

1 September to 22 December at The Well, 19 Heales Street, Smythesdale

17 January to 29 April 2024 at the Golden Plains Civic Centre, 2 Pope Street Bannockburn

To learn more about becoming a volunteer, contact Council's Community Partnerships Officer on 5220 7111.

Pictured from left, Youth volunteer Kenzie Dawler, CFA firefighter Jenny Taylor, Bannockburn volunteer Stuart McCallum, Golden Plains Shire Council Deputy Mayor Cr Gavin Gamble and Non-Profit Training Director Jenny Holiday at the launch of the Volunteers in Action photographic exhibition.

BERRYBANK WIND FARM COMMUNITY GRANTS

Applications for the Berrybank Wind Farm Community Grants Program are open until 2pm on Friday 30 June 2023.

Delivered in partnership with Berrybank Development Pty Ltd, the Berrybank Wind Farm Community Grants Program provides funding opportunities to support local community, business and tourism events and projects in Golden Plains Shire.

Applicants can apply for grant funding in two categories:

- Economic Development and Tourism projects and events - less than \$10,000 for a single year and recurring funding available where the cumulative grant total over \$10,000 for the durations of up to 5 consecutive years to fund large scale projects.

- Community projects and events - over \$10,000 for a single year and recurring funding available where the cumulative grant total over \$10,000 for the durations of up to 3 consecutive years to fund annually.

For more information about the program visit goldenplains.vic.gov.au or contact Council's Community Development & Grants Officer on 5220 7111 or email communitygrants@tplains.vic.gov.au

Community Strengthening Grants Awarded to local community groups

Council's Community Strengthening Grants are a valuable source of financial support for local events, projects and programs in Golden Plains. Applications for the first round of this year's program were open during March and Council is delighted to award over \$30,000 to eight Golden Plains community groups.

The recipients of the first round of Council's Community Strengthening Grants 2023 are:

Creative Community Grants

Historical Themed Mural

Woody Yaloak Historical Society has been successful in securing \$5,000 for a historical themed mural painted on the wall facing the Historical Precinct in Smythesdale.

Indigenous Community Connections Project

St Mary MacKillop Catholic Primary School will receive \$7,000 to go towards the Indigenous Community Connections Project which will see the children engage with Wurrikiculture to develop and install an art piece in Bannockburn.

Environment and Sustainability Grants

Wildlife Hollows and Nesting Box Workshops

Geelong Landcare Network will receive \$3200 to deliver two wildlife nesting workshops in Batesford and Bannockburn or Teesdale following the successful workshops held last year which were also funded by Council's Community Strengthening Grants program.

Gorse Removal at Smythesdale Cemetery

The Smythesdale Cemetery Trust has a responsibility to eradicate gorse and other woody weeds from the cemetery. Council is pleased to contribute \$1,500 funding to poison gorse and other weeds at the rear and northern side of the cemetery after a controlled burn by CFA.

Healthy Active Living Grants

Goal Post Safety Padding

The Moorabool Valley Masters Football Club has been successful in securing \$2,126 to allow for the goal safety padding to be upgraded at the Meredith Recreation Reserve football oval to meet the safety requirements set out in the Laws of Australian Football.

Haddon CLC Community Kitchen Fridge/Freezer Replacement

Council is pleased to award the Haddon Community Learning Centre \$3,635 to replace the current fridge and freezer in their community kitchen with larger capacity units.

Solstice Bonfire 2023

Council is proud to contribute \$1,180 to the Cape Clear Recreation Reserve for its annual community Solstice Bonfire event.

Inverleigh RSL Sub-Branch Internal & External Painting

The Inverleigh RSL Sub-Branch will receive \$6,600 to refurbish the Inverleigh RSL building internally and externally with the work being done by volunteers.

Applications for the second round of Council's Community Strengthening Grants Program will open in September.

For more information about Council's Community Strengthening Grants program visit goldenplains.vic.gov.au or contact Council's Community Partnerships Officer at 5220 7111 or communitygrants@gplains.vic.gov.au



Celebrating Young People in our Shire

Golden Plains Shire Council's Youth Development Team, in partnership with the Department of Justice and Community Safety's Crime Prevention Project has launched a Council program for recognising and celebrating the achievements of young people aged 12 to 25 across Golden Plains Shire.

The Youth Recognition Program aims to recognise the achievements and contributions of young people in our community and celebrate their accomplishments.

Community members are invited to nominate a local young person and each month a Young Person of the Month will be selected and celebrated on Council's website and social media channels.

Community members can nominate a young person for the Youth Recognition Program online at **goldenplains.vic.gov.au/youth-recognition-program** or printed copies of the submission form are available at Council's Customer Hubs, Golden Plains Civic Centre, 2 Pope Street, Bannockburn and The Well, 19 Heales Street, Smythesdale

For more information, contact Council's Youth Development Team on 5220 7111 or email **youth@gplains.vic.gov.au**.

The Youth Recognition Program is supported by the Victorian Government's Engage! Program and Crime Prevention Project funded by the Department of Justice and Community Safety.

JUNE SCHOOL HOLIDAY PROGRAM

The Golden Plains Youth Development Team offers a range of exciting and fun holiday programs designed in partnership with young people.

There are a diverse range of programs each school holidays, catering to different interests and abilities. Activities included in the June school holiday program include a movie afternoon, robotics workshop, arts and crafts activities and a Zine workshop.

All programs are safe and inclusive and supervised by staff from the Youth Development team.

For a full list of activities, visit **goldenplains.vic.gov.au/school-activity-program**





Wiser Driver Program

The Active Ageing and Inclusion team in collaboration with Access Health and Community, Hawthorn Community House supported the facilitation of the VicRoads funded Wiser Driver Program.

The 4-week program offered an informative, informal and friendly refresher course to upgrade knowledge and build experience to keep participants driving safely.

Following the success of this Wiser Driver program, the Active Ageing and Inclusion team are anticipating delivering a second course in the future.

For further information or to register your interest in the next Wiser Driver Program contact Council's Active Ageing and Inclusion team on 03 5220 7151 or email ageingandinclusion@gplains.vic.gov.au



Intergenerational Come and Try Lawn Bowls

In April, the Inverleigh Bowls club hosted an Intergenerational Come and Try Lawn Bowls afternoon.

People of various ages and abilities attended the day and expressed their enjoyment in either participating in the activities or just sitting enjoying the sunshine and delicious barbeque lunch.

A special thanks to Mark Coleman, Regional Bowls Manager, who showed support and offered valuable information on the current and future direction Lawn Bowls is taking in supporting people with disabilities. For further information, visit:

bowlsvic.org.au/play-bowls/disability-bowls

If you are interested in a social game of lawn bowls or you would like to become a member of the Inverleigh Bowls Club please contact Jenny Peel-Secretary on 0418 301 939 or Email: inverleighbowls@gmail.com

For further information visit inverleighbowls.org



Create and Connect Program

The inaugural Create and Connect Program concluded in March this year.

There were over 24 attendees that participated in the program which commenced in October 2022, running through until March 2023.

The Create and Connect Program was delivered in partnership with Geelong Regional Library Corporation and sought to re-establish a sense of self for participants living with memory loss, by exploring new ways of expression and communication through different art forms, in a safe and welcoming space.

Upcoming EVENTS

Escape the Cold

In collaboration with the Haddon Community Learning Centre and Meredith Community Centre, Golden Plains Shire Council is hosting two Escape the Cold events, offering a warm space for seniors to come, socialise and enjoy:

- An informative session about My Aged Care and Access and Inclusion in Community
- **Free** hot soup (please advise of any dietary requirements)

The first event was held on:

- **Monday 14 June** from **11am to 1pm** at the **Haddon Community Learning Centre**, 396 Sago Hill Road, Haddon

The next event will held on:

- **Wednesday 21 June** from **11am to 1pm** at the **Meredith Community Centre**, 4 Russell Street, Meredith

Bookings are essential. To book your place, contact Council's Active Ageing and Inclusion Team on 5220 7151 or email ageingandinclusion@gplains.vic.gov.au

GET IN TOUCH

If you have any suggestions for future editions or comments you would like to discuss, please do not hesitate to contact Council's Active Ageing and Inclusion Department on the following numbers:

Golden Plains Shire Council Active Ageing and Inclusion team
(during business hours): 5220 7151
Email: ageingandinclusion@gplains.vic.gov.au

COMMUNITY NOTICEBOARD



Customer Hubs

BANNOCKBURN

8.30am to 5pm, Monday to Friday
2 Pope Street, Bannockburn
Victoria, 3331.

SMYTHESDALE

8.30am to 5pm, Monday to Friday
19 Heales Street, Smythesdale
Victoria, 3351.

PHONE

P: 5220 7111

POSTAL ADDRESS

Golden Plains Shire Council
PO Box 111, Bannockburn,
Victoria 3331.

EMERGENCY CONTACTS

P: 1300 363 036

P: 5220 7111 (24 Hours)

To receive a copy of the *Gazette*
in large print, call 5220 7111.

COVER: Pictured: L-R, President of the Linton and District Historical Society, Dr Jill Wheeler, Minister for Women, the Hon. Natalie Hutchins MP, Sculptor Lucy McEachern and Member for Ripon, Martha Haylett MP at the unveiling of the sculpture of Dr Vera Scantlebury Brown OBE

KEEP UP TO DATE WITH THE
eGAZETTE

Scan to sign up now!



BECOME A FAMILY DAY CARE EDUCATOR

☎ 5220 7230



earlyyears@gplains.vic.gov.au



goldenplains.vic.gov.au/family-day-care

Golden Plains Shire Council is seeking qualified childcare educators to join the Family Day Care team in Golden Plains.

Enjoy working from home and choose hours that suit your lifestyle while contributing in a meaningful way to the lives of children in Golden Plains.

For a more flexible and rewarding career in early childhood education, speak with us today about what life might look like as a Golden Plains Shire Family Day Care Educator.

If you are interested please reach out via phone on 5220 7230 or email (below). For more information head to our website.

ENROL YOUR CHILD IN FOUNDATION PREP

For Victorian government schools, enrolments in Foundation (Prep) for the 2024 school year opened on Monday 24 April 2023, the start of Term 2.

The Victorian Government has developed the Enrolling in Foundation (Prep) web page to make the enrolment process simpler, clearer and fairer for families.

Parents and carers are encouraged to apply to enrol their child in primary school for next year by Friday 28 July 2023.

All Victorian government primary schools, including P-12 schools will follow this timeline. For more information, please visit:

www.vic.gov.au/enrolling-foundation-prep



NEW EXCAVATOR BOOSTS COUNCIL'S DRAINAGE WORKS



Council has purchased a Komatsu PC78 excavator which will work to improve drainage across the Shire, initially focusing on those neighbourhoods and communities most affected by last year's storms.

Council has also employed two full-time staff as part of its Draft Budget 2023/24 to operate the excavator, and accelerate the work to clear overgrown and blocked drains.

CONNECT WITH GOLDEN PLAINS SHIRE COUNCIL

🐦 @GPSCouncilNews

📺 GoldenPlainsShire

🌐 goldenplains.vic.gov.au

👤 GoldenPlainsMayor

📷 [lovegoldenplains](https://www.instagram.com/lovegoldenplains)