



INVERLEIGH COMMUNITY PLAN

2023 – 2027

Published by the Inverleigh Progress Association

<https://www.inverleigh.org.au>

leighnews@bigpond.com



CONTENTS

ACKNOWLEDGEMENTS	2
WHAT IS OUR COMMUNITY PLAN?	1
DEVELOPING THE COMMUNITY PLAN	1
COMMUNITY VISION	1
RELEVANT COUNCIL DOCUMENTS	2
INVERLEIGH STRUCTURE PLAN	2
COMMUNITY LED SURVEYS	3
Inverleigh Community Survey - Youth Facilities and Services 2021	3
Inverleigh Community Survey 2021	3
INVERLEIGH SNAPSHOT	4
Existing facilities and shops	4
Existing infrastructure	4
Active Community Groups, Organisations and Businesses	5
Sports facilities and organisations	5
OUR ASSETS – WHAT DO WE LOVE ABOUT INVERLEIGH?	6
Community Spirit	6
Small Community	6
Social Activity	6
Proximity to Geelong	6
Parks, Bushland and Natural Surrounds	6
OUR CHALLENGES	7
Transport	7
General	7
INVERLEIGH ACTION PLAN	8
INVERLEIGH ACTION PLAN - Sporting Complex	14
IMPLEMENTING THE COMMUNITY PLAN	15
Want to get involved?	15
SEED FUNDING	16
COMMUNITY PLAN REVIEW	16
APPENDIX	17
1. MAPS	17
2. HISTORY OF INVERLEIGH	18
4. INVERLEIGH CENSUS DATA 2021	19
5. ACHIEVEMENTS TO DATE	20
6. ACRONYMS	22
7. DISCLAIMER	22

ACKNOWLEDGEMENTS

Inverleigh spans the Traditional lands of the Wadawurrung and Eastern Maar people. We Acknowledge them as the Traditional Owners and Custodians. Inverleigh pays its respects to Wadawurrung Elders past, present and emerging.

Inverleigh also respects Eastern Maar Elders past, present and emerging. Inverleigh extends that respect to all Aboriginal and Torres Strait Islander People who are part of the Golden Plains Shire (GPS).

We would like to gratefully acknowledge the following community members for their contribution in developing the Inverleigh community plan.

- Deb Morrison
- Eliza Peel
- Hilary Hamilton
- John Bolitho
- Keith Windle
- Liz MacDonald
- Luanne Thornton
- Melissa Rutherford
- Peter Trevaskis
- Val Robertson

We would like to thank all the community groups, organisations and businesses who have also contributed to the development of the plan.

We would also like to express our sincere appreciation to all the Inverleigh residents who contributed to the initial consultation stage, through completing a comprehensive survey and encouraging friends and neighbours to get involved.

Thank you.



WHAT IS OUR COMMUNITY PLAN?

The Inverleigh Community Plan is a written document that identifies our vision for the future and the goals and actions we have identified to achieve this vision. The Community Plan will be a guide for future projects and activities over the next five years. Achievement of the priorities identified within the plan will require ongoing community support.

The Community Plan will be used to seek support from a range of organisations and government bodies for the implementation of the actions identified within the plan. It is a community document, and its implementation will be driven by our local Inverleigh residents. Golden Plains Shire Council (GPSC) will assist the community with its implementation where possible.

It is acknowledged it is essential that the Community Plan priorities and actions are reviewed on a regular basis to ensure that the priorities remain reflective of the emerging needs of the community.

DEVELOPING THE COMMUNITY PLAN

A Community Plan working group was established from members of the Inverleigh Progress Association (IPA) to oversee and assist in the development of our Inverleigh Community Plan. The working group is strategic in nature, ensuring that local people guide the development of the plan and provide local expertise.

The Community Plan development process commenced in 2021 with the Inverleigh community survey. Extensive community consultation was undertaken as part of the development of the plan to ensure that as many people as possible had an opportunity to contribute.

The community consultation process included:

- Literature review
- Community surveys
- Key stakeholder workshop with community groups & businesses
- Feedback survey
- Coffee and chat - public feedback sessions
- Attendance at community group sessions to gather feedback ie Inverleigh Seniors

COMMUNITY VISION

The Inverleigh Community Plan was developed after extensive consultation with the local community and sets the vision, as well as priorities and actions to achieve this vision.

Our collaborative vision for Inverleigh is as follows:

The Inverleigh Community cares for and respects its natural resources and its heritage while looking to the future with its planning for development. Inverleigh strives for the perfect combination of community and country character, while retaining a quiet country atmosphere. Inverleigh is a great place to live, work, play and raise a family.

RELEVANT COUNCIL DOCUMENTS

The Inverleigh Community Plan does not stand alone. It has been informed by the following Council Strategies and Plans operating within the Shire. These Strategies and Plans are developed and published by the GPSC.

Key Council Strategies and Plan documents that are relevant to Inverleigh include:

- Council Plan 2021-25¹
- Golden Plains Community Vision 2040²
- Active Ageing & Inclusion Plan 2020-2024
- Community Development Strategy
- Community Planning Program Action Plan
- Municipal Fire Management Plan
- Youth Development Action Plan
- Municipal Emergency Management Plan
- Municipal Public Health and Wellbeing Plan
- Domestic Animal Management Plan
- Reconciliation Action Plan
- Health and Wellbeing Action Plan
- Municipal Early Years Plan
- Volunteer Strategy
- Arts, Culture and Heritage Strategy
- Sport and Active Recreation Strategy
- Social Housing Plan
- Inverleigh Structure Plan C87
- Panel Report GPS Planning Scheme C87
- **Inverleigh Structure Plan**

All of these documents can be found on the GPSC website³.

INVERLEIGH STRUCTURE PLAN

The role of the Inverleigh Structure Plan⁴ is to define the Council's preferred direction of future growth within the Inverleigh township and articulates how it will be managed. The Inverleigh Structure Plan gives effect to the policies and objectives set out for the town in State Government policy and considers changing community needs. It guides the major changes to land use, built form and public spaces that together can achieve economic, social and environmental objectives for the town in the context of the GPSC Planning Scheme⁵.



¹ <https://www.goldenplains.vic.gov.au/sites/default/files/GPSCouncilPlan21-25.pdf>

² <https://www.goldenplains.vic.gov.au/sites/default/files/GPS%20Community%20Vision%202040%20FINAL.pdf>

³ <https://www.goldenplains.vic.gov.au/>

⁴ <https://www.goldenplains.vic.gov.au/sites/default/files/Inverleigh%20Structure%20Plan%20Approval%20Gazetted.pdf>

⁵ <https://www.goldenplains.vic.gov.au/sites/default/files/Golden%20Plains%20C87gpla%20Panel%20Report%20.pdf>

COMMUNITY LED SURVEYS

Inverleigh Community Survey - Youth Facilities and Services 2021⁶

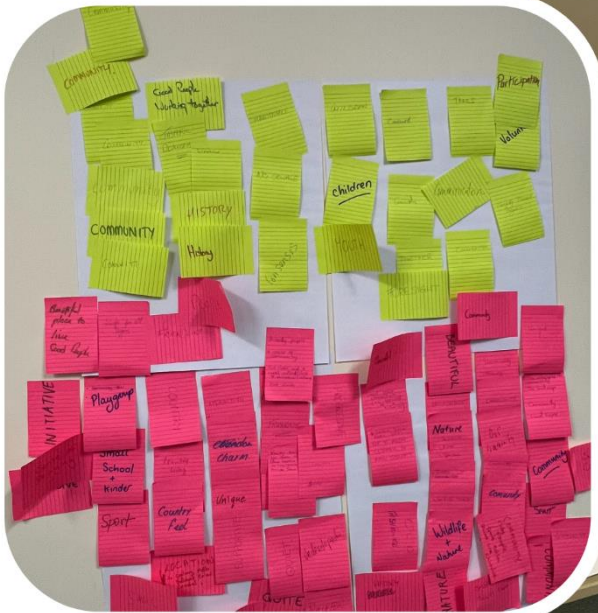
This short survey was put together by Inverleigh community members on behalf of the IPA. As a direct result of the 2020 COVID situation, it was identified that the youth could be better supported in our community. It was open for public consultation throughout February 2021 and attracted a total of 192 responses from a complete range of age groups.

Inverleigh Community Survey 2021⁷

The Inverleigh Community Plan Survey was developed by the IPA with the purpose of understanding the wants, desires, opinions and priorities of the Inverleigh community on local matters. The survey was conducted over the month of November in 2021 and was published on the IPA website (www.inverleigh.org.au). It was advertised widely in the Leigh News publication, the Leigh News Facebook page, emailed to subscribers of the Leigh News, posters were displayed in Inverleigh and flyers were widely distributed. The survey consisted of 61 questions and resulted in 221 responses from the community.

The survey itself addressed the topics of:

- demographic
- liveability
- community safety
- the environment and landscape
- facilities and infrastructure
- sports and recreation
- Inverleigh businesses
- social and inclusion

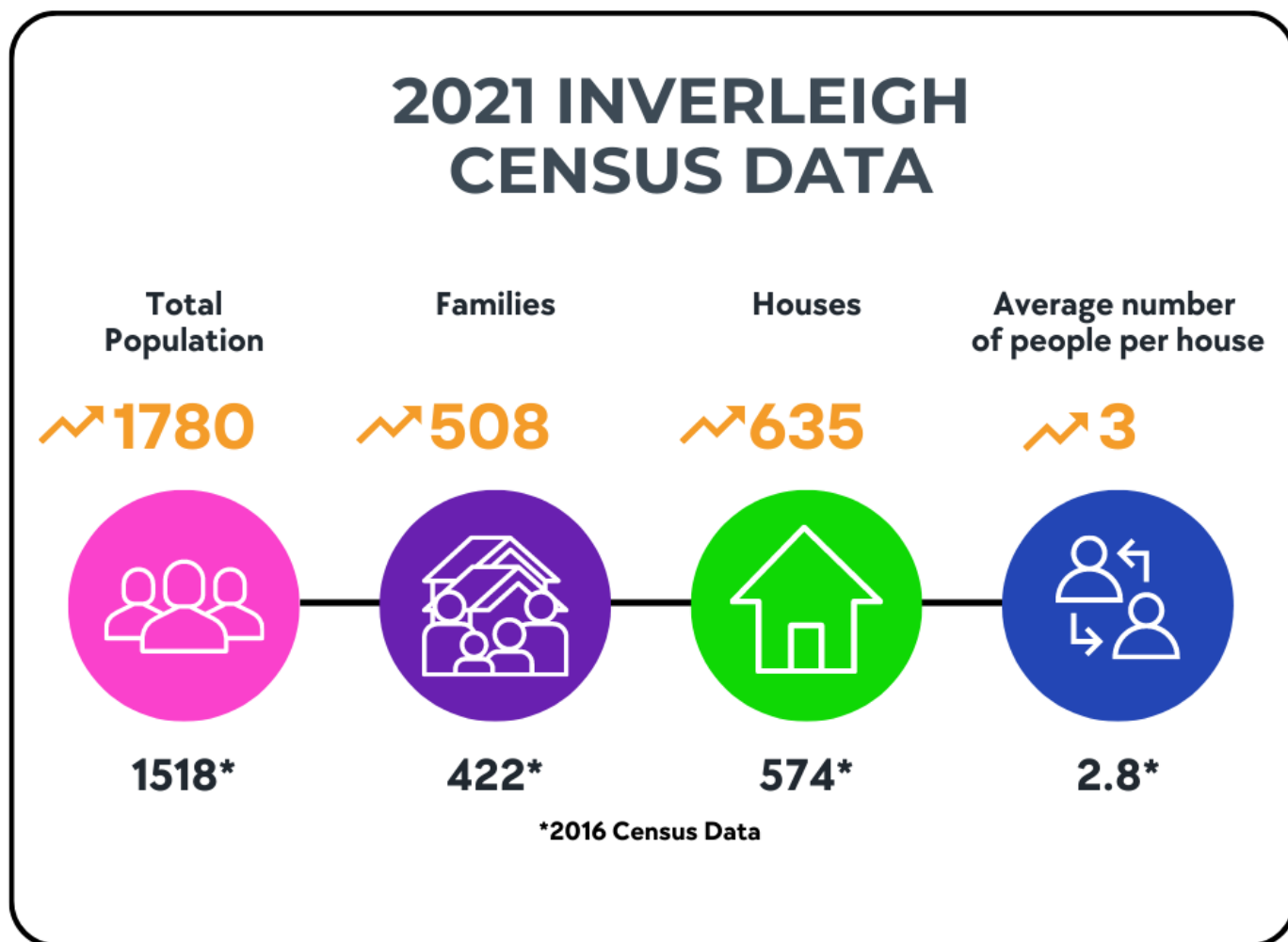


⁶ <https://www.inverleigh.org.au/consultation>

⁷ <https://www.inverleigh.org.au/consultation>

INVERLEIGH SNAPSHOT

Inverleigh is a growing community as shown by the 2021 Australian Census Data.



Existing facilities and shops

- Primary school, Kindergarten, Maternal Child Health Centre and Cemetery
- Café, Bakery, Farm Supplies, Hotel, General Store / Post Office, Bed and Breakfasts, Pharmacy, Real Estate Agents, Op Shop, Antiques, Bric a Brac and Home Wares.
- Public Hall, CFA station, Churches, Police Station and Petrol Station
- Tennis Courts, Sports Complex with 2 Sporting Ovals, Netball Courts, Bowling Green, Golf Course, Playgrounds and Open Spaces.

Existing infrastructure

- Individual packaged wastewater treatment systems (no reticulated sewerage)
- Reticulated water to most of the township
- Power
- NBN Fixed Wireless Tower
- Telstra and Optus mobile phone towers.

Active Community Groups, Organisations and Businesses

There are a range of active community groups and organisations located within the community that provides an avenue for residents to contribute to their community.

These include:

- Cemetery Trust
- Coffee club
- Craft Group
- Country Women's Association
- Farming networking with local farmers
- Friends of Inverleigh Nature Conservation Reserve
- Golden Oldies
- Good Friday Appeal Committee
- Historical Society
- Inverleigh CFA
- Inverleigh Food swap
- Inverleigh Hotel club
- Inverleigh Kinder Parent Committee
- Inverleigh Playgroup
- Inverleigh Primary School Council
- Inverleigh Progress Association
- Inverleigh Public Hall Committee
- Inverleigh RSL
- Leigh District Landcare Group
- Lions Club
- Men's Group
- Murgheboluc Reserve Hall Committee
- Opportunity Shop Volunteers
- Presbyterian Church
- Red Cross
- Sacred Heart Catholic Church
- Senior Citizens
- Sing Sesh
- Southern Farming Systems
- St Pauls Anglican Church
- Victoria Park Mgt Committee

Sports facilities and organisations

Inverleigh has a number of sporting groups and organisations that utilise a variety of facilities around Inverleigh including the Sporting Complex, Public Hall, Church Halls, Golf Club, Parks and Reserves.

They include:

- AusKick Program
- Inverleigh Bowls Club
- Inverleigh Cricket Club
- Inverleigh Football & Netball Club
- Inverleigh Golf Club
- Inverleigh Junior Football Club
- Inverleigh Tennis Club
- Leigh District Riding Club
- Net Set Go Program
- Pilates Group
- Private Fitness Groups
- Seniors walking group
- Tennis coaching
- Walking group
- Yoga Group



OUR ASSETS – WHAT DO WE LOVE ABOUT INVERLEIGH?

Community Spirit

It was apparent through many of the consultation activities in developing this Community Plan and in the Inverleigh Structure Plan process surveys and submissions that the sense of community spirit, the local people and the natural environment were what many valued about living in Inverleigh. When asked what they like about Inverleigh, responses included “I like the friendly community vibe, the rivers, the trees, and easy country living” and “I love that kids can play safely and lots of natural areas to explore” and “the sense of community”.

Small Community

For many, the reason they love living in Inverleigh is because it is seen as a small country town with a rural feel. Residents appreciate the quiet lifestyle and the feeling of a “safe community”.

The survey identified that 64% of the respondents know their neighbours and that 76% felt a strong sense of community. 88% of the respondents felt very proud to live in Inverleigh and 90% felt safe living in Inverleigh.

Social Activity

Inverleigh is very well supported by a large number of community groups, clubs, associations and networks. The range and types of social and sporting activities cater for all age groups that choose to be involved.

The survey indicated a strong amount of support for more cultural events in Inverleigh such as music concerts, community markets, theatre performances or plays, pop up art gallery, fashion shows and car & bike shows. There was also a good response to encourage the addition of more public art including sculptures, murals, interactive displays and community art projects

Proximity to Geelong

Many mentioned that the proximity to Geelong, yet the distance is what they love about Inverleigh: “it is close enough to Geelong but still far enough away to be a quiet uncongested town”. Residents are able to utilise Geelong as they need to, but it is far enough away to feel removed.

Parks, Bushland and Natural Surrounds

People identified that the natural surrounds and Leigh River contributes to what they love about Inverleigh. Many mentioned their appreciation for the “River Walk”. The River Walk is the track that follows both sides of the Leigh River through the Inverleigh township. The river is also regularly used by kayakers, canoeists and recreational fishers.

The Inverleigh Nature Conservation Reserve (INCR) has also been identified by the local community as an asset. INCR runs between Inverleigh and Teesdale and is of high conservation significance. Of the Grassy Woodlands that once existed in Victoria, only 1% remains and two thirds of that is the Inverleigh NCR. This is classed as an Endangered Ecological Vegetation Class. The Reserve also contains a small patch (93 hectares) of an Ecological Vegetation Class known as Damp Sands Herb-rich Woodland, which represents 95% of this ecosystem that is protected in parks and reserves and is classed as Vulnerable.

OUR CHALLENGES

Transport

School buses are available to transport secondary school students to Bannockburn and Geelong. However, there is no other regular public transport available to the town. There are no V/Line bus services that stop or travel through Inverleigh. V/Line services travel through Bannockburn into Geelong. There is one service, once a week, to Geelong returning a few hours later. Access to public transport was viewed as an issue for the town.

General

The general concerns that were raised through the survey were:

- The subdivisions – we will lose that small country village atmosphere
- Growing land releases and housing developments
- No childcare centre or local facility with provision for long day care
- Lack of facilities for older youth



INVERLEIGH ACTION PLAN

The following community priority projects have been identified from the results of the 2021 Inverleigh Community Survey and from consultation undertaken with Inverleigh community groups and local businesses.

Priority Projects	Actions	Partnerships	Rating	Status
Development of an Inverleigh Youth Precinct – new Skate Park, Bike Pump Track and Basketball Court	<ul style="list-style-type: none"> - Undertake a Community Youth Survey - Develop an Inverleigh Youth Precinct Plan - Liaise with Council, State MPs and Federal MPs - Advocate for funding through local MPs - Assist the development of a concept plan - Support Council grant applications - Advocate for community involvement in the planning phase - Communicate milestones with the community 	IPA GPSC	High	Commenced 2021
Retention of a Leigh River pedestrian bridge at the site of the Federation Bridge	<ul style="list-style-type: none"> - Liaise with GPSC about the ongoing state of the Federation bridge - Seek to be involved with any future decisions regarding the town asset - Advocate for pedestrian access across the Leigh River in multiple sites 	IPA GPSC	High	Ongoing
Leigh River – extension and maintenance of the existing Leigh River walking tracks and upgrades to river access points	<ul style="list-style-type: none"> - Advocate for planning and funding for extensions of the river walk - Advocate for ongoing maintenance and development of the river walk and junction viewing/fishing platform - Investigate the need for further infrastructure that supports use of the Leigh River for recreational activities ie kayaking, swimming and fishing - Liaise with relevant authorities - Develop communications material that maps out and supports the walking tracks - Develop a plan for future possible infrastructure projects - Seek out funding opportunities 	IC GPSC VFA	High	Ongoing
Lawson’s Park – maintain as an open community space	<ul style="list-style-type: none"> - Liaise with GPSC as to any future changes - Scope out the idea of installing outdoor gym equipment - Develop a plan for possible future uses - Seek out funding opportunities 	IPA GPSC IC	High	Ongoing

Priority Projects	Actions	Partnerships	Rating	Status
Inverleigh streetscape improvements including trees, drainage, parking, pathways & bollards	<ul style="list-style-type: none"> - Primary responsibility rests with Council as part of the Inverleigh Structure Plan. - Liaise with Council as issues arise - Advocate for funding for the implementation of the Inverleigh Structure Plan - Advocate for compliance of all pathways with the <i>Disability Discrimination Act 1992</i>, to ensure that all pathways are accessible - Ensure Council communications are disseminated to the community - Facilitate and ensure open communication between Council and the IPA 	GPSC IPA IC IB	High	Ongoing
Sealed footpath connecting the School to the Federation Bridge	<ul style="list-style-type: none"> - Liaise with GPSC 	IC GPSC	Medium	Not started
Addition of a sealed footpath in West Street to the school bus stop	<ul style="list-style-type: none"> - Liaise with GPSC 	IC GPSC	Medium	Not started
Provision of steps that link the river walking track to the Common Rd firebreak	<ul style="list-style-type: none"> - Advocate for planning and timely implementation - Ensure GPSC communications are disseminated to the community - Facilitate and ensure open communication between Developers, GPSC and the IPA 	Developers GPSC IPA	High	Ongoing
Upgrade and maintain community garden beds	<ul style="list-style-type: none"> - Form a community working group - Develop a plan for renewal and ongoing maintenance - Liaise with the relevant authorities - Seek out funding opportunities 	IPA GPSC IC	Medium	Not started
Improve the area around the town center gazebo	<ul style="list-style-type: none"> - Develop a plan to concrete around the gazebo - Liaise with the relevant authorities - Seek out funding opportunities 	IPA GPSC	Medium	Not started
Provision of electric car charging points	<ul style="list-style-type: none"> - Consult with the Community - Develop a plan - Liaise with the relevant stakeholders and authorities - Seek out funding opportunities 	IC GPSC G21	Medium	Not started
Bike racks located strategically around town	<ul style="list-style-type: none"> - Consult with the Community - Develop a plan - Liaise with the relevant authorities and other priority projects - Seek out funding opportunities 	IC GPSC	Low	Not started

Priority Projects	Actions	Partnerships	Rating	Status
Improve road safety in Inverleigh	<ul style="list-style-type: none"> - Advocate for the improved safety at the Hamilton Hwy / Dundas St intersection - Make recommendations to the relevant authorities for the following actions: <ul style="list-style-type: none"> o Implement a stop sign at the intersection o Remove overgrown vegetation and trees that block the view of turning traffic o Recommend a speed reduction along Dundas St to the railway crossing - Advocate for a signed pedestrian crossing between the businesses on the Hamilton Hwy - Advocate for improved road safety and road maintenance on Common Road between the Hamilton Hwy and Teesdale Road. - Advocate for the maintenance of road surfaces in and around Inverleigh 	IPA GPSC Department of Transport (Vic Roads/ RRV and TAC) Vic Police Inverleigh Seniors IC Developers	High	Ongoing
Upgrade of essential services	<ul style="list-style-type: none"> - Advocate for the ongoing maintenance and upgrades of all essential services - Encourage the community to report issues to the relevant authorities 	IC IPA GPSC RA	Medium	Ongoing
Inverleigh Nature Conservation Reserve – raise community awareness and respect.	<ul style="list-style-type: none"> - Advocate on behalf of the Community with the relevant authorities - Produce and publish media articles on relevant topics - Plan and host public events - Plan and host education campaigns with Parks Vic 	Friends of INCR Parks Vic DELWP Geelong and G21 Councils	High	In progress
Inverleigh Nature Conservation Reserve – preserve and enhance the natural features	<ul style="list-style-type: none"> - Undertake weed control measures - Plan and undertake tree planting session 	Friends of INCR Community Volunteers Parks Vic	High	In progress
Restoration of the Inverleigh Train Station	<ul style="list-style-type: none"> - Form a local working group - Consult with relevant authorities and stakeholders - Identify the restoration work required - Seek approval from relevant authorities - Identify a source of funding - Undertake the restoration - Communicate the outcome 	IC IPA GPSC	Medium	In progress

Priority Projects	Actions	Partnerships	Rating	Status
Expansion of the Inverleigh Primary School play areas.	<ul style="list-style-type: none"> - Scope out and consolidate plan for expansion - Consult with relevant authorities and community groups - Develop a project plan with identified milestones and stages - Seek out funding opportunities - Implement the plan 	IPS Education Dept GPSC Tennis Club Church Groups Vic Roads	High	In progress
CFA – Station relocation	<ul style="list-style-type: none"> - Develop business case for relocation - Communicate and consult with key stakeholders - Scope out possible locations with key stakeholders - Advocate for the relocation - Reach a consensus with the relevant authorities 	CFA GPSC DELWP	High – within 5 years	In progress
CFA – provision of fixed firepits at campsites along the Leigh River walking track	<ul style="list-style-type: none"> - Develop a plan that includes the design and proposed location of the firepits - Consult with relevant authorities and stakeholders - Seek funding opportunities - Implement the project - Communicate the outcomes 	CFA GPSC	Medium	Not started
Lions Club – provision of a public waste transfer station (dump point) in Inverleigh	<ul style="list-style-type: none"> - Undertake research relating to types of waste transfer stations and installation requirements - Consult with community and stakeholders - Scope out suitable location - Develop a plan and seek approval from relevant authorities - Seek funding opportunities - Implement the project 	Lions Club GPSC VPMC IPA	Medium	In progress
Victoria Park – new building and public amenities	<ul style="list-style-type: none"> - Develop a plan to replace/ update the aging club rooms - Consult with the community and relevant authorities - Engage with more community groups to use the VP facilities - Scope out future use ideas including children nature play space, community garden, short stay camping, dog training, emergency animal evacuation and further develop horse riding facilities. - Seek funding opportunities 	VPMC DEWLP GPSC IC	High	Not started

Priority Projects	Actions	Partnerships	Rating	Status
Inverleigh Historical Society – raise awareness and preserve history.	<ul style="list-style-type: none"> - Plan, organise and host historical open days - Plan and facilitate the Inverleigh Community Stories Video Project in conjunction with RMIT - Develop communications material and visual displays that explain the history of Inverleigh - Seek funding opportunities 	Historical Society RMIT GPSC IC	Medium	In progress
Inverleigh Public Hall – undertake improvements to the hall and increase storage capacity.	<ul style="list-style-type: none"> - Plan and facilitate the installation of air conditioning units at the Inverleigh Public Hall in main hall - Develop a plan for the installation of a new storage shed and associated landscaping at the back of the hall. - Liaise with the relevant authorities - Seek out funding opportunities 	Hall Committee DEWLP IC	Medium	In progress
Inverleigh Businesses – ongoing development	<ul style="list-style-type: none"> - Consult with GPSC and Community groups about business needs. - Advocate for streetscape improvements and ensure that the current layout is maintained. - Advocate for improved parking and seating outside current businesses without changing the side street format. - Seek out landholders about possible business development opportunities. - Advocate for a community led consultative approach to the Council Streetscape plan, if it is to be re-visited. 	IB GPSC IC	High	In progress
RSL – undertake improvements to the Inverleigh building	<ul style="list-style-type: none"> - Design an extension at the back of the RSL to provide more internal space, toilets and full disability access. - Seek out building companies to scope out and cost the project - Liaise with the relevant authorities and community - Seek out funding opportunities 	Inverleigh RSL RSL Victoria GPSC IC	High	Not started
RSL – upgrade the area surrounding the Inverleigh War Memorial	<ul style="list-style-type: none"> - Develop a plan to enhance the surrounding landscape of the War Memorial - Liaise with the relevant authorities - Seek out funding opportunities 	Inverleigh RSL GPSC IPA	Medium	Not started
Inverleigh Tennis Club – ongoing development	<ul style="list-style-type: none"> - Liaise with key stakeholders ongoing - Investigate the installation of a rebound wall 	Tennis Club GPSC IPS IC	Low	Not started

Priority Projects	Actions	Partnerships	Rating	Status
Inverleigh Playgroup – undertake improvements and further development	<ul style="list-style-type: none"> - Undertake the replacement of the deteriorating outside play equipment at the Inverleigh Hall ie wooden pirate ship - Seek out funding opportunities - Advocate for the installation of a community communication board at playgrounds - Encourage the attendance at playgroup through widespread promotion - Promote playgroup to new families within the community - Advocate for the installation of a fences around playgrounds 	Inverleigh Playgroup GPSC IC Hall Committee	Medium	Not started
Inverleigh Food Swap Group - development of a community garden	<ul style="list-style-type: none"> - Form a community working group - Develop a plan including proposed site - Liaise with the relevant authorities - Seek out funding opportunities 	Food Swap Group IC GPSC	Medium	Not started
Community Social Event	<ul style="list-style-type: none"> - Form a community working group - Develop a plan for the event - Liaise with the relevant authorities - Seek out funding opportunities - Host the event 	IC IPA GPSC	Medium	Not started
Develop and maintain an Inverleigh Community Plan	<ul style="list-style-type: none"> - Maintain a community working group through the IPA - Undertake cost recovery for current plan from seed funding - Liaise with key stakeholders ongoing - Advocate for an ongoing community led consultative approach - Seek funding opportunities for developing next plan 	IC IPA GPSC	High	Ongoing



INVERLEIGH ACTION PLAN - SPORTING COMPLEX

Priority Projects	Actions	Partnerships	Rating	Status
Installation of lights on Oval 2	<ul style="list-style-type: none"> - Develop a plan - Liaise with GPSC 	SC GPSC Sponsors	High	In progress
Sealing the driveways, carparks and improving drainage	<ul style="list-style-type: none"> - Sealed main entrance and driveway, with speed humps around Oval 1 - Sealed bowls club entrance and car park 	SC GPSC Sponsors	High	Not started
Installation of public toilets	<ul style="list-style-type: none"> - Consult with Community - Liaise with GPSC 	SC GPSC	High	Not started
Terracing between rooms and Oval 1	<ul style="list-style-type: none"> - Liaise with GPSC 	SC GPSC	Medium	Not started
Covered outdoor spectator area on Oval 1 side of Pavilion	<ul style="list-style-type: none"> - Liaise with GPSC 	SC GPSC	Medium	Not started
Installation of a playground and stadium seating near Netball Courts	<ul style="list-style-type: none"> - Liaise with GPSC 	SC GPSC	Medium	Not started
Provision for a gymnasium / undercover training area	<ul style="list-style-type: none"> - Liaise with GPSC 	SC GPSC	Medium	Not started
Provide coaches boxes on Oval 2	<ul style="list-style-type: none"> - Liaise with GPSC 	GPSC SC	Medium	Not started
Provision of power to Green Shed and Container	<ul style="list-style-type: none"> - Liaise with GPSC 	SC GPSC	Medium	Not started
Bowls club – removal of pine trees	<ul style="list-style-type: none"> - Advocate for the removal of old pine trees - Liaise with GPSC 	SC GPSC	High	Not started
Cricket club - turf wicket Oval 2	<ul style="list-style-type: none"> - Liaise with GPSC 	SC GPSC	Medium	Not started
Provision of disability access across the Sporting Complex.	<ul style="list-style-type: none"> - Conduct a disability access audit of the Sporting Complex - Provide copy of the audit to GPSC - Liaise with GPSC to resolve any non-conformances 	SC GPSC	High	Not started

IMPLEMENTING THE COMMUNITY PLAN

The Inverleigh Community Plan has been developed by our local community for our local community. The community need to work together in order to implement the plan.

To meet the priorities and actions identified within the Inverleigh Community Plan, a large amount of commitment is needed by community volunteers. Building on the existing strengths and skills of members of our local community, smaller project groups can be formed to include any community member passionate about achieving the vision of the Community Plan. Representatives may include local community-based groups, service clubs, education settings and local businesses.

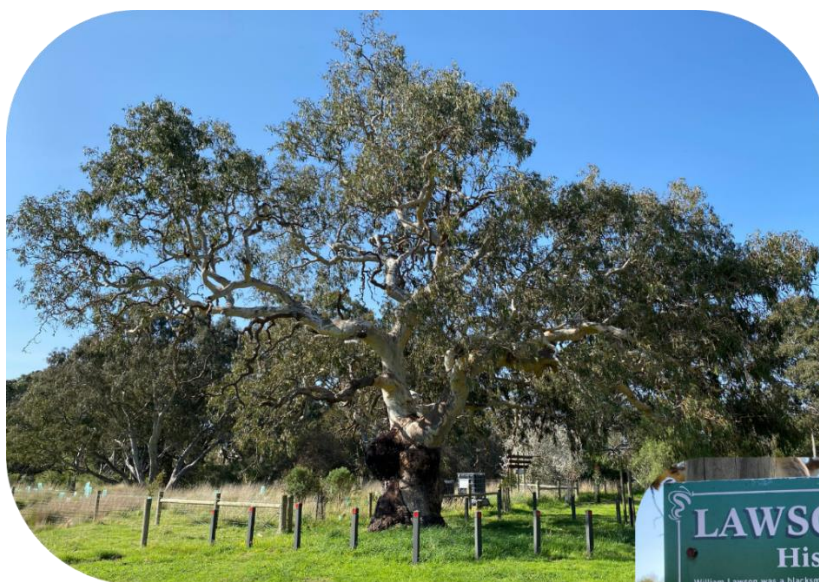
Project groups are encouraged to seek broad representation of the local community (young people, families, aged, etc.). All of the listed priority projects will require further research, planning, design, potential fundraising or applying for grants by the community in order to progress these actions further. The IPA has a number of smaller volunteer working groups that have achieved community projects and should be approached if you would like assistance or guidance.

The development of this Community Plan is also to assist the community in advocating for priority projects that are outside the scope of a community project group. For example, projects that will require significant Government funding or are the sole responsibility of a Government Agency.

Want to get involved?

If you would like to volunteer to undertake a priority project and need assistance or support to get started, please contact the IPA or the GPSC. The IPA members have the skills, knowledge and experience to provide assistance and guidance when it comes to community projects.

Contact the IPA via the website - <https://www.inverleigh.org.au> or email - leighnews@bigpond.com



SEED FUNDING

Seed funding is the provision of a grant from Council to enable local communities to 'kick-start' projects or to fund small projects identified in their community plan. Many grants require a contribution from the applicant and seed funding gives communities the opportunity to apply for funding, to support the delivery of larger projects, that they may have originally thought beyond their capacity.

Council will provide seed funding to those communities who develop a community plan that:

- Demonstrates effective consultation with at least 10% of the community,
- Demonstrates consultation with a broad range of community members,
- Identifies projects that will build community capacity,
- Meet the Seed Funding requirements (these will be supplied by Council), and
- Have presented their plan at a Council meeting.

COMMUNITY PLAN REVIEW

It is essential that the Community Plan is regularly reviewed and monitored to ensure that the priorities and actions are relevant and up to date.

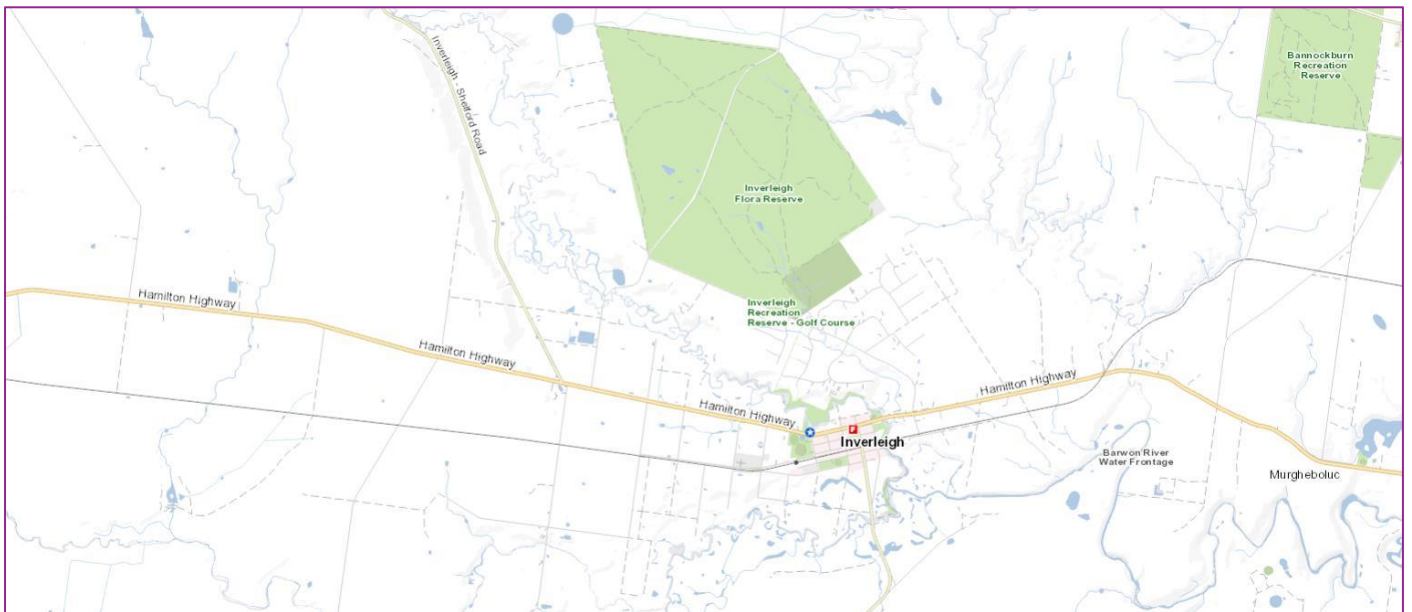
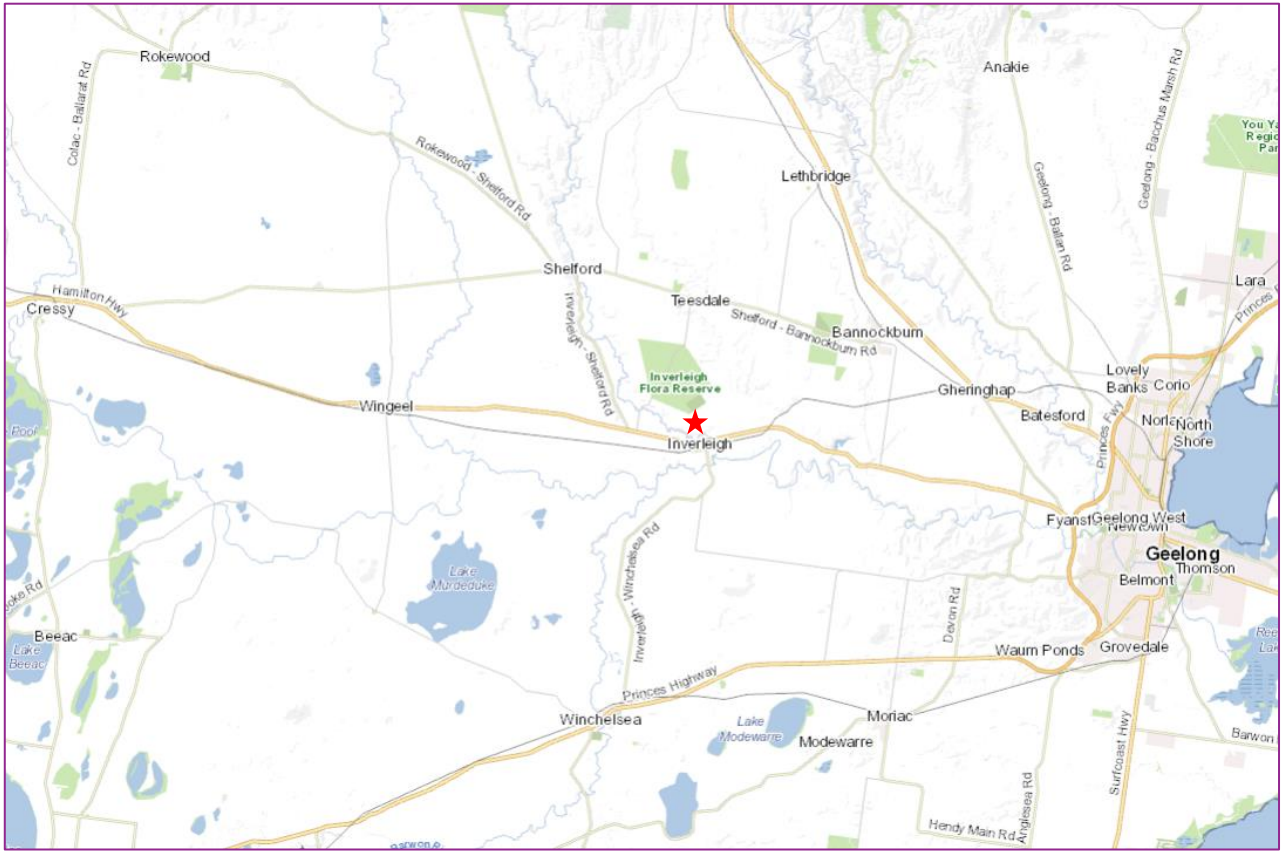
A recommended schedule of review is as follows:

- July 2024 - Review
- July 2025 - Review
- July 2026 - Review
- September 2026 – Community Survey
- January - July 2027 - Draft New Plan
- August - November 2027 – Publish New Plan



APPENDIX

1. MAPS



2. HISTORY OF INVERLEIGH

Inverleigh, like other areas in GPS, was once occupied by the Wadawurrung of the Kulin nation. Inverleigh is located 28km west of Geelong and 10km southwest of Bannockburn, on the Hamilton Highway. It is nestled within a curve of the Leigh River, approximately 1 km north of the junction of the Leigh and the Barwon Rivers.

Arrival at the town boundary from the east is spectacular as the highway “drops” into the river valley from the rural plains that separate Inverleigh from Geelong. The township was officially proclaimed in 1855, following a crown survey undertaken in 1854. It is laid out in a conventional grid aligned north-south to east-west on the western side of the Leigh River. The early settlement of Inverleigh is associated with the Derwent Company’s runs of the 1830s and 1840s. The Company laid claim to 26,000 acres of land in the Portland Bay District. When it was dissolved in 1842 its properties were divided up by mutual consent and pastoral runs such as Native Hut No. 3 and Weatherboard Nos. 1 & 2 were formed within the Inverleigh area. The new owners continued to be important patrons of the town.

The Inverleigh township developed during the late 1850s as a commercial and civic centre servicing surrounding pastoral properties. It was also an important stop on the colonial trade routes that linked Geelong to the Western District and the Woody Yaloak goldfields to the north. At first, a gravel ford provided access across the Leigh River where William Lawson established a blacksmith shop and then a hotel called Horseshoe Inn. After the completion of a permanent bridge over the Leigh River in 1853 and the formalization of the township grid, High Street became the primary route into and out of town. The bluestone abutments of a former bridge survive but the bridge has been superseded by a modern structure. Important public and commercial buildings were established during the 1850s & 60s, such as the township’s two bluestone hotels, a post and money order service, a Mechanics Institute, four churches and three denominational schools. The division of large pastoral properties at the end of the nineteenth century gave way to intensive agricultural activities such as dairy and horticulture. A farmer’s common was established to provide inhabitants of the town access to pasture for the grazing of cattle and horses. Orchards originally established to supplement dairy farming developed into large commercial operations, supplying jam manufacturers located in Melbourne.

The Gheringhap to Maroona railway line was completed in 1913, with local produce dispatched from the Inverleigh Railway Station. While surrounding townships experienced a decline in population and services during the mid-twentieth century, Inverleigh struggled but survived. In the 1950s the townships population was 250 persons, with an increase to 350 persons recorded in the 1960s. During this period the township had a post and telegraph office, State School, savings bank, four churches, a public hall, police station, electric lighting and football, cricket, golf and tennis clubs. By the 1970s the public hall was extended to incorporate a baby health care centre and medical clinic. The township of Inverleigh remains substantially intact and the surviving buildings and infrastructure from a range of periods retain a high degree of integrity.




Key public buildings, open public spaces and surviving examples of commercial and residential development provide a clear sense of past and present settlement.

Previously a rural service town, Inverleigh is now attracting lifestyle residents to low density rural residential living settings and continues to attract passing traffic for rest stops and refreshments. Inverleigh has an array of natural features including areas of environmental significance, rural landscapes and river walks, as well as areas and sites of historical and cultural significance.

4. INVERLEIGH CENSUS DATA 2021⁸

Geography type [Postal Areas](#)

Area code POA3321

	People	1,780
	Male	50.5%
	Female	49.5%
	Median age	38
	Families	508
	Average number of children per family	
	for families with children	2
	for all families	1
	All private dwellings	635
	Average number of people per household	3
	Median weekly household income	\$2,146
	Median monthly mortgage repayments	\$1,949
	Median weekly rent (a)	\$300
	Average number of motor vehicles per dwelling	2.6

(a) For 2021, median weekly rent calculations exclude dwellings being occupied rent-free.

Age All people	Inverleigh	%Inverleigh	Victoria	%Victoria	Australia	%Australia
Median age	38	N/A	38	N/A	38	N/A
0-4 years	134	7.7	375,900	5.8	1,463,817	5.8
5-9 years	157	9.0	402,168	6.2	1,586,138	6.2
10-14 years	142	8.1	391,388	6.0	1,588,051	6.2
15-19 years	118	6.8	363,201	5.6	1,457,812	5.7
20-24 years	65	3.7	410,337	6.3	1,579,539	6.2
25-29 years	53	3.0	475,532	7.3	1,771,676	7.0
30-34 years	94	5.4	499,959	7.7	1,853,085	7.3
35-39 years	147	8.4	489,927	7.5	1,838,822	7.2
40-44 years	120	6.9	428,808	6.6	1,648,843	6.5
45-49 years	130	7.4	416,524	6.4	1,635,963	6.4
50-54 years	130	7.4	410,360	6.3	1,610,944	6.3
55-59 years	134	7.7	383,916	5.9	1,541,911	6.1
60-64 years	116	6.6	362,634	5.6	1,468,097	5.8
65-69 years	73	4.2	320,562	4.9	1,298,460	5.1
70-74 years	77	4.4	285,000	4.4	1,160,768	4.6
75-79 years	25	1.4	203,205	3.1	821,920	3.2
80-84 years	23	1.3	141,601	2.2	554,598	2.2
85 years and over	7	0.4	142,475	2.2	542,342	2.1

⁸ <https://www.abs.gov.au/census/find-census-data/quickstats/2021/POA3321>

5. ACHIEVEMENTS TO DATE

Many of the achievements in Inverleigh to date are due to the hard work of community groups, like the IPA. The IPA has been operating for more than 50 years and has worked with our local Council on many projects during that time. There are obvious and less obvious signs of the work of the IPA around the township of Inverleigh. Many projects have been the result of partnerships with other groups to obtain funding to secure the project. Other major projects have been achieved through the outstanding cooperation of community groups with Council.

Key projects that are typical of Community Plan objectives implemented in Inverleigh in recent years include:

River walking tracks – these have been developed and extended as the river has become more accessible and many people use them regularly as part of their daily exercise.

Lawson's Park upgrades – this has been an ongoing project with walking tracks, BBQ shelter, relocation of the old police lockup and directional signage.

Barbeque shelter, picnic table and benches – this project was completed a few years ago and the table and benches are still as beautiful today. They are well used by locals and visitors alike and there have been many very positive comments from travelers through the town.

Signage boards and explanatory signs – The signs along the tracks and at certain points of historical interest have been funded by the IPA with support from our local Council.

Publication of the Heritage Walk leaflet – this was a project with our local Historical Society, who researched the sights. A map was obtained, and the Association had it printed. Leaflets are available for interested people at the General Store.

Inverleigh Gazebo – this was designed and built by architecture and building students at the Gordon in 1992 and the display cabinets are kept up to date by the Historical Society. In 2020, the Council cleaned and repainted the building.

Clock tower and clock – the original clock was donated, and the tower constructed to display the time. When it stopped a new automatic clock was purchased. This was controlled by an electronic signal, which stopped after a few years. It took some detective work by Andrew Peel (a local community member) to seek out the source and get it working again! In 2013, the signal stopped completely, and a new town clock was purchased and put in place.

Federation Bridge – this bridge was erected with a grant to commemorate the centenary of Federation in 2001 and has proved a vital walking / cycling link between those on both sides of the river and a popular attraction to tourists. It has recently been checked by an engineer and pronounced in good condition.

Open Space to north of the Leigh River- a committee of Management originally set up under the auspices of the IPA maintains the area around the walking tracks by mowing and keeping weeds down. A number of groups including Leigh Districts Landcare, Friends of the Inverleigh Flora and Fauna Reserve and the IPA have planted over 2000 trees and shrubs along parts of the river walk.

Toilet block and picnic shelter – the old toilets were an eyesore in the town and the IPA worked for many years to encourage Council to upgrade them and remove the old building. Now we have a modern facility with sheltered picnic tables and parking space for many visitors. This toilet has the reputation for being the busiest in Golden Plains Shire!

River Pump and standpipe – this pump for locals to obtain river water for stock and domestic purposes was set up a long time ago. It has been upgraded and maintained by members of the IPA. Users can purchase a key and there is also an annual service fee to continue pumping water from the Leigh River. The shed was rebuilt in 2020, thanks to the efforts of Tony Waayers, the Treasurer of the IPA.

Public Notice Board – The community noticeboard outside the General Store is maintained regularly by the IPA. Notices, no larger than A4 can be left at the store and will be displayed for up to 1 month.

Leigh News – this monthly newsletter began publication over 40 years ago and has changed over the years from typewritten sheets to one using the most up to date computers and printers. It is produced entirely by volunteers and has always been a free community paper published by the IPA.

Gray's Garden – these two beautiful beds of Australian native shrubs and trees have been developed and maintained by Inverleigh local residents, Mr Alan and Mrs Joy Gray. Alan has always loved Australian Native plants and propagated the plants and planted the garden to create a little native oasis along the Leigh River by the Federation Bridge. The IPA have supported the site by providing signage. The garden provides a lovely stopping place beside the river and people enjoy the garden as they walk along the path and over the river.

Inverleigh and District Information & Telephone Directory – a number of these booklets have been published over the years. Whilst an annual publication would be ideal it is time consuming to update and collect the data. A Federal election year is a good time to catch up with locals to seek details. The latest edition is available to pick up at the Inverleigh Store. Newest edition recently published in July 2022. All residents & business are encouraged to add their details to remain connected to the local community.

Town Entrance – the two stone entrances stand at either end of the town along the Hamilton Highway. They were built by stonemason David Long and are fitting monuments. This project was funded with grants and a substantial financial contribution from the IPA.

New Inverleigh Play Space – the Community were successful in obtaining a significant State Government grant to install and landscape a new play space within a short distance of the existing public amenities block. The park has been officially named Yerrum Yaluk Bun.

Historical Lock Up – the old lock up was moved from the Police Station and placed in Lawsons Park. In 2021, repairs were made to the building, and it was repainted. Signage at the Lock Up describes the historical significance for locals and visitors alike.

Football Club Rooms Upgrade – the existing club rooms at the Inverleigh Sporting Complex have been upgraded for the Inverleigh Football Netball Club and the Inverleigh community. The project has delivered a new social space, upgraded kitchen and canteen, bar and amenities. The \$500,000 upgrade project was fully funded by the Australian Government and was driven by the Inverleigh Football and Netball Club.

6. ACRONYMS

Inverleigh Progress Association (IPA)
Inverleigh Community (IC)
Inverleigh Businesses (IB)
Inverleigh Nature Conservation Reserve (INCR)
Inverleigh Primary School (IPS)
Golden Plains Shire Council (GPSC)
Sporting Complex (SC)
Returned & Services League (RSL)
Regional Roads Victoria (RRV)
Victorian Fisheries Authority (VFA)
Victoria Park Management Committee (VPMC)

7. DISCLAIMER

The Inverleigh Community Plan is a collaborative effort, and every endeavor has been made to ensure the information contained in this document is true and correct.

