



GOLDEN PLAINS SHIRE COUNCIL  
**CLIMATE EMERGENCY PLAN**  
2022-2032 **DRAFT**

# ACKNOWLEDGEMENT OF COUNTRY

Golden Plains Shire spans the Traditional lands of the Wadawurrung and Eastern Maar Peoples. Council acknowledges them as the Traditional Owners and Custodians and pays its respects to both Wadawurrung and Eastern Maar Elders past, present and emerging. Council extends that respect to all Aboriginal and Torres Strait Islander People who are part of Golden Plains Shire.



# CONTENTS

<b>FOREWARD</b>	<b>3</b>	<b>6. ADDRESSING THE CLIMATE EMERGENCY</b>	<b>14</b>
<b>EXECUTIVE SUMMARY</b>	<b>4</b>	Introducing the Plan	15
<b>1. INTRODUCTION</b>	<b>6</b>	Embedding climate action in Council	16
<b>2. SCOPE AND OBJECTIVES</b>	<b>8</b>	Resilient and adaptive communities	19
<b>3. CONTEXT</b>	<b>9</b>	Caring for the land	22
Australia and climate change	9	Climate responsive development	24
Impact of climate change on the region	10	Sustainable transport and travel	26
<b>4. GOLDEN PLAINS SHIRE EMISSIONS PROFILE</b>	<b>11</b>	<b>APPENDIX A GLOSSARY</b>	<b>28</b>
Golden Plains Shire community-wide emissions	11	<b>APPENDIX B METHODOLOGY</b>	<b>29</b>
Corporate emissions	12	Community consultation	29
<b>5. EMISSIONS TARGET</b>	<b>13</b>	Other consultation	31
		Development of actions	31
		<b>APPENDIX C MONITORING AND REPORTING</b>	<b>33</b>

# FOREWORD

## WADAWURRUNG

Firstly, we would like to Acknowledge all Wadawurrung Traditional Owners, our Ancestors and pay respect to our Elders past, present and emerging.

Wadawurrung Traditional Owners Aboriginal Corporation was appointed in May 2009 as a Registered Aboriginal Party under the Victorian Aboriginal Heritage Act 2006. The Corporation represents Wadawurrung Traditional Owners.

Kareet Bareet (Black Hill near Gordon) is where Bundjil created Wadawurrung people. Lal Lal Falls near Ballarat is where Bundjil created the waterways and where he returned to before heading to his resting place in the stars, continuing to watch over us. Our Dja (Country) is interwoven with relationships no matter whether the shape of that relation is human, granite hills, Waa (Crow) or Larrap (Manna gum).

As Wadawurrung Traditional Owners we live by Bundjil's lore to care for Country and all things living as our Ancestors have always done for thousands of generations. Our Dja is more than a place - it is a diverse landscape with landforms such as our coastal waters, cliffs, wetlands, grassy and volcanic plains. People were all formed by Bundjil and our Ancestor spirits who continue to live in the land, water and sky.

We are connected to our land, our skies, our waterways, and our coastal areas; keeping them healthy keeps our People and Culture healthy. Our People have endured trauma, violence and dispossession since invasion and have demonstrated resilience to continue their cultural practices which has provided the strength to ensure our survival.

However, due to climate change, an increase in population and development, many things have contributed to the impacts on Country, Water and all that belongs to our Country, that which gives life and sustains us.

In 2020 We released **"Paleert Tjarra Dja" Let's make Country good together**, our Wadawurrung Country Plan. It is a 10-year (2020-2030) vision of the aspirations and goals of Wadawurrung People, providing guidance on how to strengthen relationships with Wadawurrung Traditional Owners Aboriginal Corporation.

Wadawurrung people are committed to working together with key stakeholders like Golden Plains Shire Council to ensure we have strong partnerships, engagement, and collaboration to achieve our aspirations and goals, and that our cultural heritage, language, stories and cultural values are protected, and that Wadawurrung People and Country is respected.

We look forward to continuing our partnership and presenting a voice for our Traditional Owners and the aspirations of the Country plan with the endorsement of the Reconciliation Action plan.

Koling wada-ngal (Let us walk together)

<https://www.wadawurrung.org.au/healthy-country-plan-video>

**Wadawurrung Traditional Owners Aboriginal Corporation**



## EASTERN MAAR

The contemporary Eastern Maar nation traces an unbroken line of descent back to our ancestors over many thousands of years. We have survived as our Country's First People and, despite the well-documented colonial history, continue to maintain economic, traditional, cultural, familial and spiritual ties to our homeland. Through the leadership and authority of our Elders, we are practicing our laws and customs, strengthening our system of governance and nurturing our connection to Country.

We continue to pass on our traditional knowledge from generation to generation, inducting our young people into Maar society as a cultural practice initiated by our Ancestors. It is a process that keeps customs and stories alive and ensures we are able to maintain Maar culture, language and society. Drawing strength from our identity and past, we are able to live our culture as a set of attitudes, customs, and beliefs; helping us to be resilient and adaptable in changing circumstances.

**Meerreengeeye Ngakeepoorryeyt - Eastern Maar Country Plan 2015**

**Eastern Maar Aboriginal Corporation**



Map based on current Registered Aboriginal Party boundaries as at June 2022.

Source: Victorian Aboriginal Heritage Council- <https://achris.vic.gov.au/weave/wca.html>

# EXECUTIVE SUMMARY

In July 2021, Golden Plains Shire Council (Council) declared a Climate Emergency, a resolution for immediate and urgent action to reverse global warming and adapt to changes that society cannot avoid. As part of this resolution, Council committed to preparing its 10-year Climate Emergency Plan to put the declaration's words into actions.

There is a strong imperative for Council to continue to reduce greenhouse gas emissions and prepare for the changing climate given the expected impact on Council's strategic goals, operations, assets and service delivery, as well as the health and wellbeing of the community. Now is the time to accelerate this by ramping up the ways Council supports the community and prepare for changes to the Shire. The Golden Plains Climate Emergency Plan 2022-2032 (the Plan) demonstrates Council's commitment and drives the response to the Climate Emergency.

The Plan outlines the pathway toward net zero emissions for Council operations by 2025 and the mitigation and adaptation actions Council and the community will take together to create a more sustainable future for Golden Plains Shire. Actions are categorised by the following five themes:

1. Embedding climate action into Council
2. Resilient and adaptive community
3. Caring for the land
4. Climate responsive development
5. Sustainable transport and travel

To lead action on climate change, Council will support renewable energy, facilitate sustainable transport and development, and develop adaptation focussed land management strategies. Council will also work to build understanding and resilience amongst the community and advocate for urgent and bold climate action from both State and Federal Governments.







# 1. INTRODUCTION

Climate change is a pressing issue for local government that is already manifesting as a legal, social, economic and environmental risk. Local governments make decisions that span generations (e.g. roll-out of infrastructure, planning for future settlements) and as such need to be actively assessing and responding to the direct and indirect risks that climate change presents.

In July 2021, Golden Plains Shire Council (Council) declared a Climate Emergency, a resolution for immediate and urgent action to reverse global warming and adapt to changes that society cannot avoid. As part of this resolution, Council committed to preparing an Climate Emergency Plan (the Plan) to put the declaration's words into actions. Without a Plan, any actions taken run the risk of being ad-hoc and limited through a lack of coordination with other work occurring in the Shire, across the state and beyond.



## ABOUT THIS PLAN

This Plan is supported by the Golden Plains Shire Council Plan 2021-2025, in which climate change is a recurring theme. Tackling climate change is part of the Golden Plains Community Vision 2040, as a key focus of the sustainability section and one of five health and wellbeing priorities.

The Plan is also supported by Council's Environment Strategy 2019-2027 whose Theme 4.2 (Climate change adaptation and mitigation) states that Council will aim to *foster a community that understands the impacts of climate change, responds positively to future climate conditions and actively reduces their greenhouse emissions*<sup>1</sup>.

To inform its response, Council relied on peer-reviewed science from the Commonwealth Science and Industrial Research Organisation, The Bureau of Meteorology and the Intergovernmental Panel on Climate Change (IPCC). Where local information is used, Council looked for published and peer-reviewed scientific data, government reports or guidelines, or data used by government authorities in decision-making. Projections from these sources suggest that temperatures will increase, along with more intense rainfall and storm events and the incidence of drought conditions. Average annual rainfall may decline and sea levels are likely to rise.

This Plan also draws from the Wadawurrung and Eastern Maar Country Plans, which speak about each Registered Aboriginal Parties' cultural knowledge, values and priorities. Council acknowledges their wealth of knowledge of the land, sky and waters, and their custodianship of the land for tens of thousands of years, and is committed to strengthening these partnerships and aligning our aspirations.

*"Our Ancestors were the original scientists. A deep understanding of the earth, the seasons and how we interact with them guided how we used to live. They knew how to use plants for tucker, medicine and materials; how to manage Country so that it would provide for them year after year; how to build tools and weapons and canoes."*

- Eastern Maar Country Plan (2015), page 37

The Country Plans are available to view:

- 1. Wadawurrung Healthy Country Plan, Paleert Tjaara Dja - Let's Make Country Good Together 2020-2030**
- 2. Eastern Maar Country Plan, Meerreengeeye Ngakeepoorryeeyt 2015**

While Council acknowledges its role in managing some of the impacts of climate change, the most effective climate change adaptation requires a shared response from all levels of government, stakeholders and community. Hence, the Plan outlines actions that are within Council's control, including collaborating with the community, relevant organisations and Traditional Owner groups to develop and deliver actions that will help to manage common climate change risks that will impact everyone.

<sup>1</sup>Golden Plains Shire Council Environment Strategy (2017-2027)



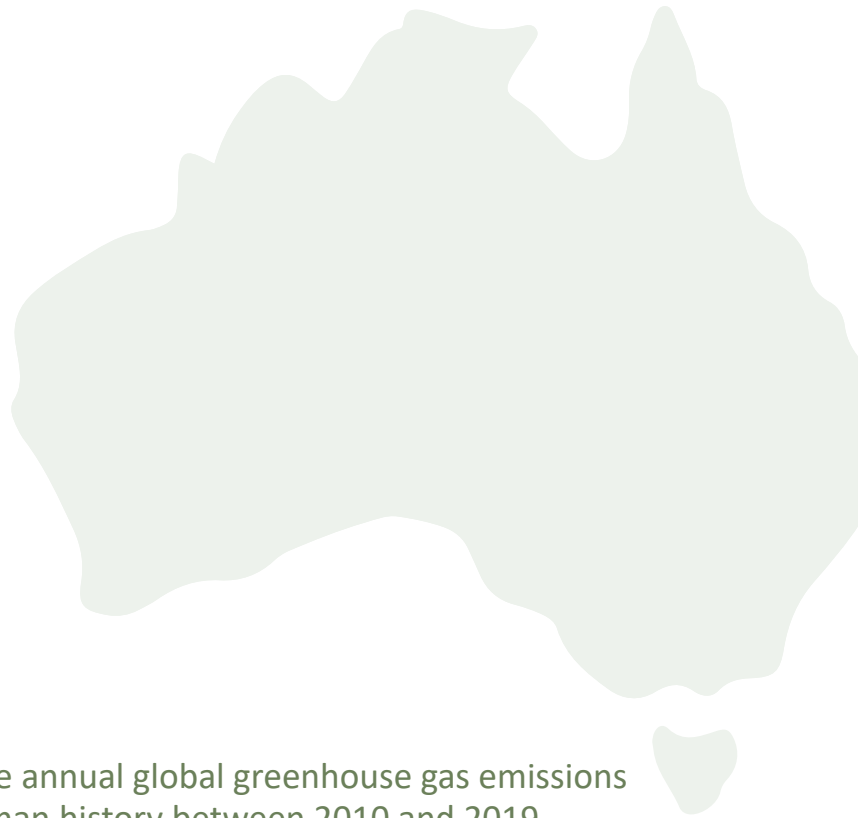
## 2. SCOPE AND OBJECTIVES

The timeframe of the Plan is from **2022 to 2032** and its scope includes actions to mitigate, adapt and respond to climate change in Golden Plains Shire. It is a Plan for the whole of Shire - it includes actions Council will undertake as well as those that will be undertaken in partnership with the community. Actions include those things that Council can control, partner and advocate for that relate to the Climate Emergency and transition the Shire to net zero emissions.

### **Key objectives of the Plan include to:**

- 1.** Demonstrate Council's commitment to taking action on climate change by acknowledging that urgent action is required by all levels of government, including local councils.
- 2.** Drive Council's response to addressing the Climate Emergency by committing to actions to mitigate emissions.
- 3.** Support communities across the Shire to adapt to current and future climate impacts.

# 3. CONTEXT



## AUSTRALIA AND CLIMATE CHANGE

According to the IPCC, the average annual global greenhouse gas emissions were at their highest levels in human history between 2010 and 2019. Limiting warming to around 1.5°C requires global greenhouse gas emissions to peak before 2025 at the latest, and be reduced by a quarter by 2030<sup>2</sup>.

*“We are at a crossroads. The decisions we make now can secure a liveable future.  
We have the tools and know-how required to limit warming.”*

- IPCC Chair Hoesung Lee

In Australia, there has already been unprecedented warming over the last few decades, with 2019 being the hottest and driest year ever recorded. The summer of 2020 saw catastrophic fire danger ratings at locations and times of the year that have never been seen before.

Victoria is already taking action to address climate change. There are three pieces of legislation that underpin Council’s Climate Emergency response:

1. **Victorian Local Government Act 2020** sets a clear expectation that the long-term negative impacts of climate change on future generations should be considered in Council planning, decision-making and actions.
2. **Climate Change Act 2017** requires Council to consider climate change through the Municipal Health and Wellbeing Plan and calls on Councils to put forward an emissions reduction pledge.
3. **Renewable Energy Act 2017** legislates the renewable energy generation target of 50% by 2030 for Victoria.

<sup>2</sup>IPCC (2022), IPCC Sixth Assessment Report Press Release





*"We are the protectors and carers of this Country and this Country protects and cares for us. We belong to and are spiritually connected to this Country and this Country is part of us. We are inseparable, no matter where we are, we are bound together. When Country is sick, we are sick."*

- Wadawurrung Country Plan (2020-2030), page 26

## IMPACT OF CLIMATE CHANGE ON THE REGION

Golden Plains Shire is located in south-western Victoria covering an area of 2,705 square kilometres. Golden Plains is a predominantly rural area with a population of just under 25,000 across 16 townships<sup>3</sup>, bordered by the regional cities of Geelong to the south and Ballarat to the north.

### Climate change will have the following impacts on Golden Plains Shire:

- Maximum and minimum daily temperatures will continue to increase year-round over this century. By the 2030s, an increase in daily temperature of 0.8 to 1.5 degrees is expected<sup>4</sup>.
- Harsher fire weather and longer fire seasons will exacerbate an already bushfire prone Shire.
- Increased frequency and intensity of heatwaves and storms is predicted to impact vulnerable people, industries and infrastructure.
- Ecosystems will experience increased pressure due to increased frequency and severity of extreme weather events and changes to waterway flows.
- The health and wellbeing of the community will be impacted through risk of heat-related illness and death, diseases and adverse mental health effects.

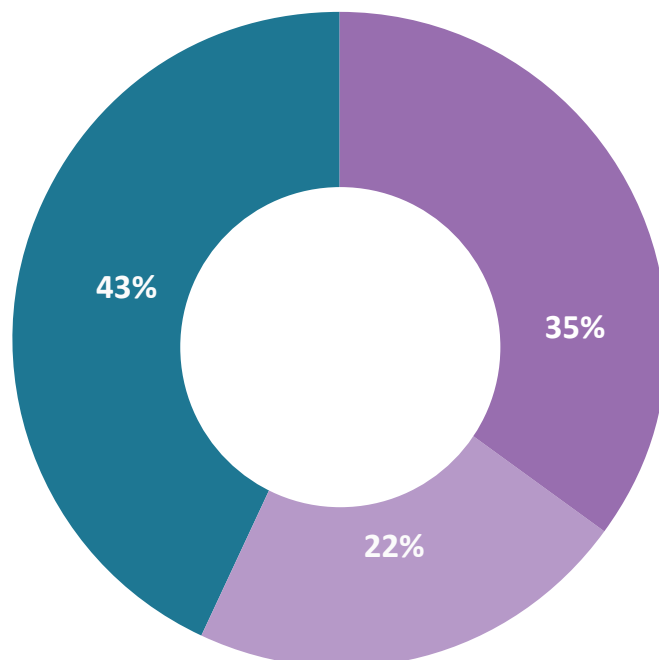
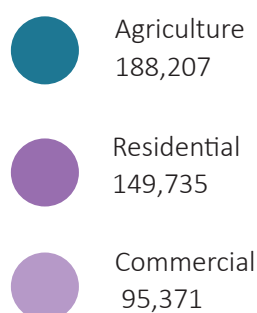
<sup>3</sup>Golden Plains Shire Council Plan (2021-2025)

<sup>4</sup>Adapt Grampians (2021-2025), Grampians Region Climate Adaptation Strategy

# 4. GOLDEN PLAINS SHIRE EMISSIONS PROFILE

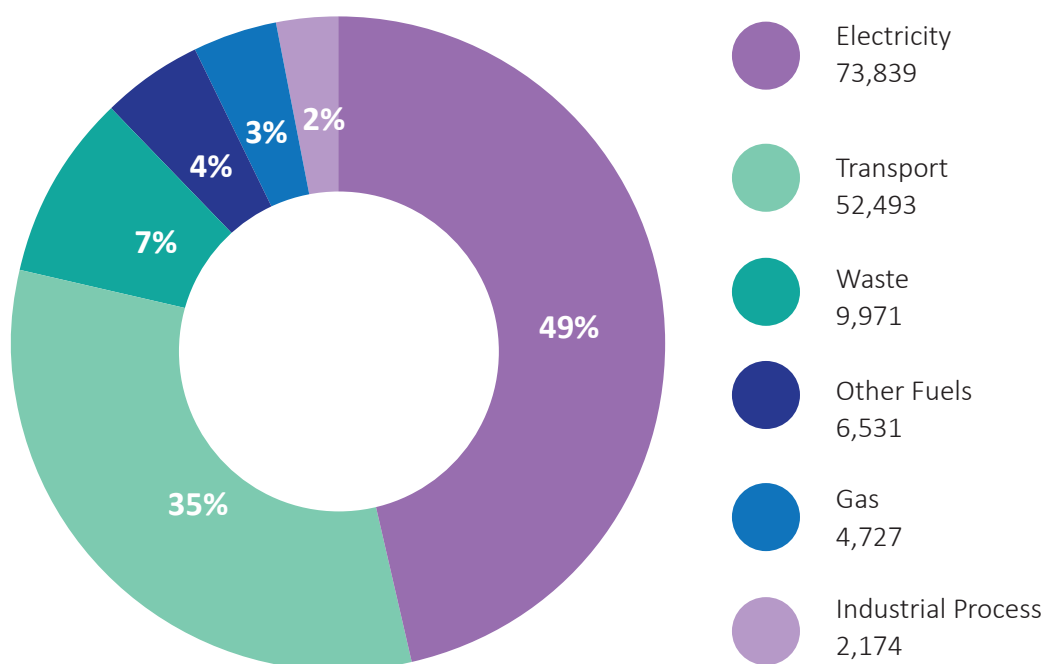
## COMMUNITY-WIDE EMISSIONS

Approximately **433,313 tCO<sub>2</sub>-e** were emitted in Golden Plains Shire in 2019, as shown in the figure<sup>5</sup> to the right.



## RESIDENTIAL EMISSIONS

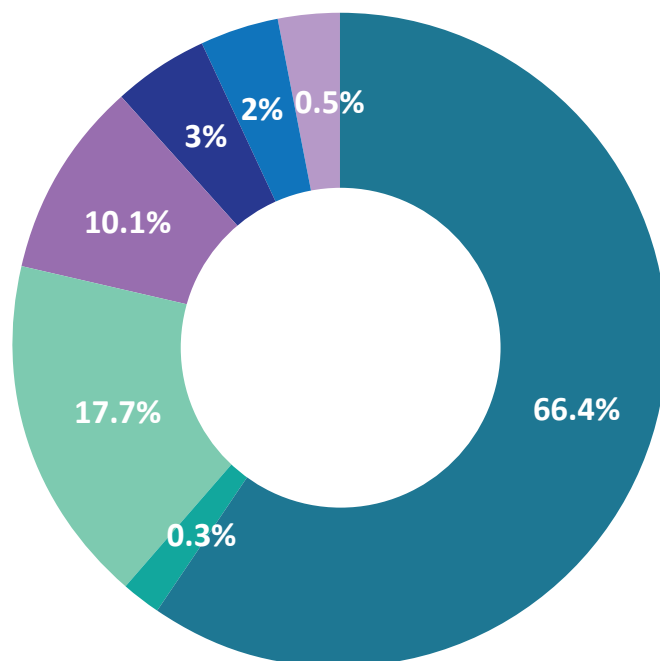
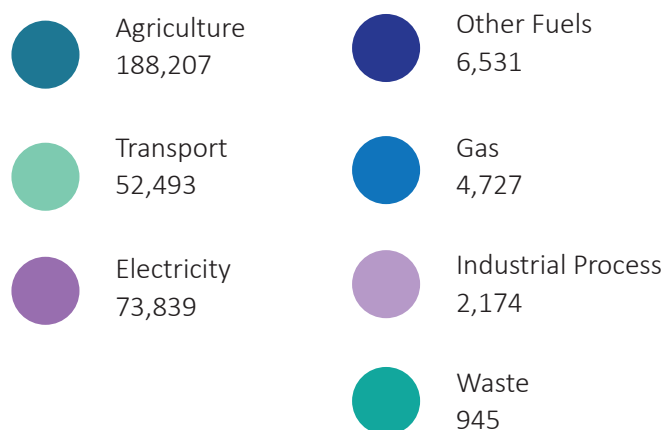
About **150,000 tCO<sub>2</sub>-e** were emitted in residential emissions in 2019, 49% of which is a result of electricity use (see figure below). This is about 17 tCO<sub>2</sub>-e per dwelling per year. Residential emissions comprise 35% of the Shire's overall emissions.



<sup>5</sup>Point Advisory (2021), Golden Plains Shire Council Greenhouse Gas Inventory

## COMMERCIAL EMISSIONS

In 2019, approximately **284,000 tCO<sub>2</sub>-e** were emitted through commercial means, the majority of which is attributable to agricultural operations. Commercial emissions have the biggest impact in Golden Plains, accounting for 65% of overall Shire emissions.

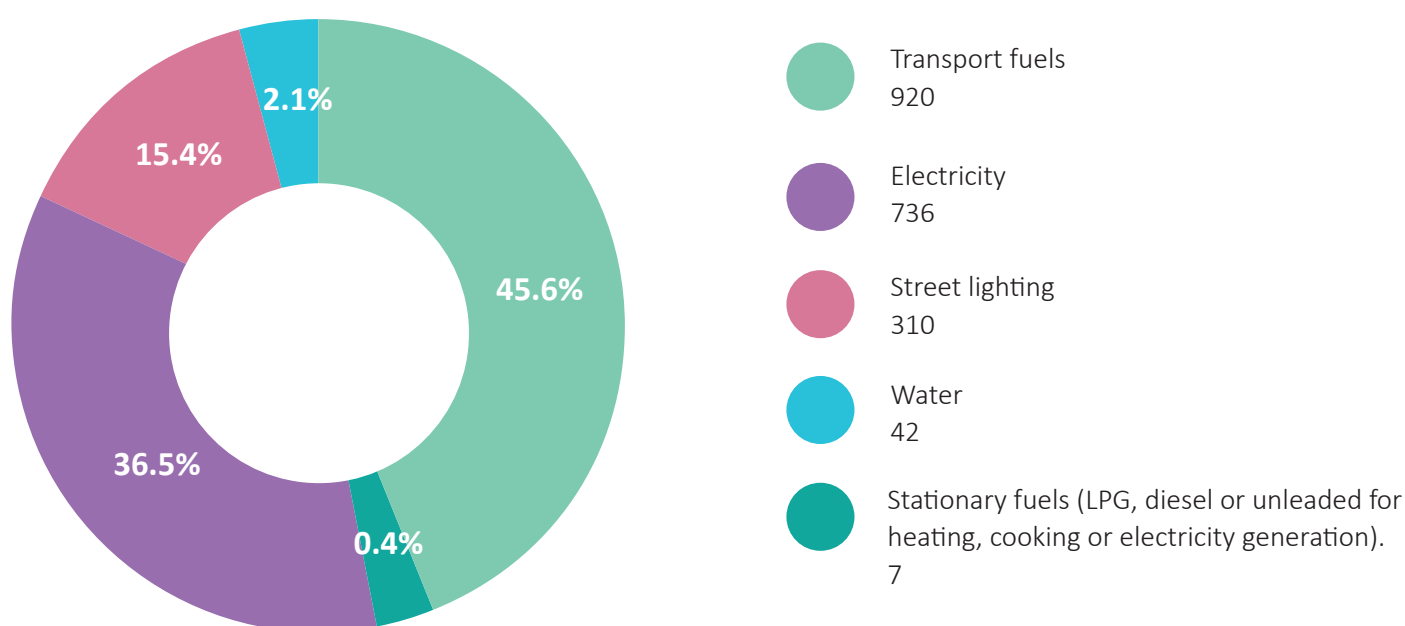


## CORPORATE EMISSIONS

Council's total corporate emissions during the 2018/19 financial year were approximately **2,016 tCO<sub>2</sub>-e**, 2% of the Shire's overall emissions<sup>6</sup>.

Transport fuels is currently the largest contributor to Council's emissions, accounting for 46% of total corporate emissions. Following Council's commitment to purchase 100% renewable energy for all electricity use from 1 July 2021, corporate emissions were reduced by almost 52%. This means there are still approximately **1,280 tCO<sub>2</sub>-e** to address through the scope of the Plan.

The next two sections outline Council's emissions target as well as how Council will achieve its goal.



<sup>6</sup>Ironbank Sustainability (2020), Golden Plains Shire Council Greenhouse Gas Emissions Reduction Plan.



## 5. EMISSIONS TARGET

While Council's own emissions are only approximately 2% of all Golden Plains Shire's emissions, Council plays a role in leading and inspiring change.

There is a strong imperative for Council to continue to reduce greenhouse gas emissions and prepare for the changing climate given the expected impact on Council's strategic goals, operations, assets and service delivery, as well as the health and wellbeing of the community.

While Council has worked to reduce emissions to a degree, it is time to accelerate this, and ramp up the ways we support the community and prepare for changes to the Shire and community.

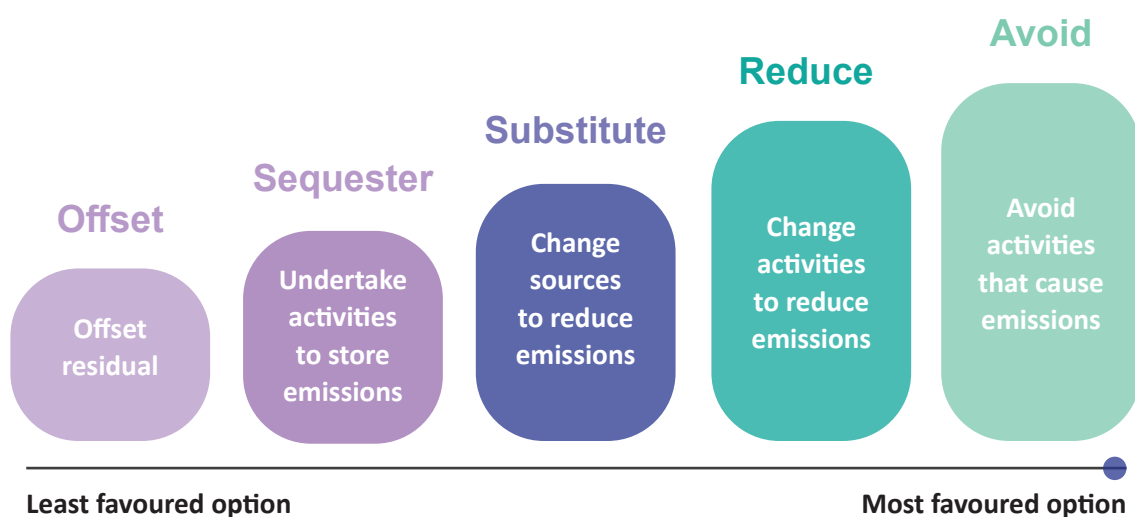
In the Climate Emergency Plan community survey, **73%** of respondents indicated they support Golden Plains Shire Council going carbon neutral before 2030.

**Through the Plan, Council commits to pursue net zero emissions for Council operations by 2025.**

*"It is in the self-interest of humanity to avoid pushing Earth's life-sustaining ecosystems across tipping points. The Landcare movement is one of a number of organisations working to protect these ecosystems. With the support of the Golden Plains Shire's Climate Emergency Plan we hope to see sound policy and action to prevent these tipping points from ever being reached."*

- Batesford Fyansford Stonehaven Landcare Group

This target has been set based on the scale and speed of change required and the opportunities available to achieve deep cuts to emissions. The following section discusses how Council will reach these targets, based on the carbon management hierarchy shown in the figure below:





# 6. ADDRESSING THE CLIMATE EMERGENCY

## INTRODUCING THE PLAN

The following Plan outlines Council's climate mitigation and adaptation priorities for action on climate change over the next 10 years. The Plan identifies the actions Council will take to respond to the Climate Emergency and actions Council, together with the Golden Plains Shire community, will work on to create a more sustainable future together. The implementation of the Plan requires a Council-wide response and collaboration with both the community and other organisations.

*A Climate Emergency Plan is a necessity not a luxury. Strong action, foresight and unprecedented levels of collaboration across all sectors of the Shire (and beyond) is vital. The next 10 years of action are critical and this Climate Emergency Plan is an essential tool for informing our collective response.*

- Golden Plains Shire community member

Actions are informed by consultation with stakeholders including the Golden Plains Shire community, businesses, and Council staff, the details of which are provided in Appendix B. Appendix C outlines how monitoring and reporting of the Plan will be undertaken.

To lead action on climate change, Council will support renewable energy, facilitate sustainable transport and development, and implement adaptation focussed land management strategies. Council will also work to build understanding and resilience amongst the community and advocate for urgent and bold climate action from both State and Federal Governments.

### The Plan is organised into five themes:

1. Embedding climate action into Council
2. Resilient and adaptive community
3. Caring for the land
4. Climate responsive development
5. Sustainable transport and travel

Each theme and associated actions are outlined in the following sub-sections.

In the Action tables, the year refers to the year in which the action will commence. The fourth column, 'mitigation/adaptation', refers to whether the action is focussed on reducing emissions (mitigation) or helping adapt to climate change (adaptation). Some actions fall into both categories, noted as 'both'.





## THEME 1: EMBEDDING CLIMATE ACTION IN COUNCIL

Immediate action is required by all levels of society to drastically reduce emissions to mitigate the impacts of climate change. Though governments, businesses and communities are seeking to reduce the amount of greenhouse gases they emit, certain impacts of climate change are unavoidable. Therefore, Council is acting to both reduce the Shire's contribution to climate change, and prepare for the changes the Shire is likely to experience.

*“Local governments like Golden Plains are setting good examples which will support and encourage us all to take action. It is too important to leave to others to act. We must consider our children and grandchildren and decide what sort of a future we should leave for them.”*

- Friends of Bannockburn Bush

Actions outlined in this section include those that Council will undertake internally and those related to decreasing the footprint of Council events and Council community facilities.

### What Council is already doing

- **Victorian Energy Collaboration** - Council gets all power sourced renewably (52% of emissions).
- **Barwon South West Climate Alliance founding member** - A collaboration of Councils, catchment management authorities, water authorities and universities in the Barwon South West region looking to take collaborative action on climate change.
- **Solar installation** - Solar has been installed on Council facilities including the Golden Plains Civic Centre in Bannockburn, the Well in Smythesdale and other smaller facilities such as community gardens, with plans to install more panels.

## ACTIONS

ID	Action	Start year	Mitigation/ Adaptation
Implementation			
1.1	<b>Embed climate change into Council practices</b> <ol style="list-style-type: none"> <li>Review risks listed in Council risk register to ensure climate risks are listed along with appropriate mitigation strategies.</li> </ol>	2022	Both
1.2	<b>Embed climate change into Council project processes</b> <ol style="list-style-type: none"> <li>Include climate change considerations as a component of Council's project management framework.</li> </ol>	2022	Mitigation
1.3	<b>Ensure climate change mitigation and adaptation measures are taken into account in new Council building projects</b> <ol style="list-style-type: none"> <li>Develop an Environmentally Sustainable Design (ESD) Planning Policy.</li> <li>Implement and promote Policy.</li> </ol>	2023	Both
1.4	<b>Embed climate change into Council grant processes</b> <ol style="list-style-type: none"> <li>Revise weighting for assessment of Berrybank Windfarm Community Grant applications to include climate change as a consideration.</li> </ol>	2023	Both
1.5	<b>Increase the energy efficiency of Council assets</b> <ol style="list-style-type: none"> <li>Upgrade street lighting in the Shire to LED.</li> </ol>	2023	Mitigation
1.6	<b>Decrease environmental impact of Council events</b> <ol style="list-style-type: none"> <li>Identify emissions generated from Council events.</li> <li>Develop policy to require all events run by Council or in collaboration with Council to be carbon neutral.</li> </ol>	2024	Mitigation
1.7	<b>Future proof Council facilities</b> <ol style="list-style-type: none"> <li>Audit all Council facilities to identify and prioritise upgrading and implementing mitigation and adaptation features by 2027. Consider which facilities can be considered climate refuges.</li> <li>Invest in upgrading facilities on an ongoing basis.</li> <li>Promote upgraded facilities including those that are suitable climate refuges.</li> </ol>	2024	Both
1.8	<b>Decrease water usage at Council facilities</b> <ol style="list-style-type: none"> <li>Identify baseline water usage at Council facilities.</li> <li>Explore opportunities for reducing water usage by at least 20%.</li> <li>Implement measures to decrease water usage.</li> </ol>	2025	Both
1.9	<b>Identify, eliminate and reduce Council emissions wherever possible. Where eliminating or reducing emissions isn't possible, purchase carbon offsets</b> <ol style="list-style-type: none"> <li>Seek and work with partners to create and promote local and regional offset opportunities.</li> </ol>	2025	Mitigation

ID	Action	Start year	
Implementation			
1.10	<b>Embed climate change into Council practices</b> <ol style="list-style-type: none"> <li>1. Develop an information pack with key facts.</li> <li>2. Host a quarterly session to ensure new employees are educated about Council's climate change efforts during their induction period.</li> <li>3. Require all employees to attend a session.</li> </ol>	2029	Both
1.11	<b>Embed climate change into Council processes</b> <ol style="list-style-type: none"> <li>4. Develop a Climate Emergency course to put up on Council's staff learning platform.</li> <li>1. Offer and promote the course.</li> </ol>	2030	Both
Investigation			
1.12	<b>Decrease emissions generated by single-vehicle travel</b> <ol style="list-style-type: none"> <li>1. Investigate a carpooling system for Council staff.</li> <li>2. Promote and launch system.</li> </ol>	2027	Mitigation
Planning			
1.13	<b>Reduce emissions generated by Council fleet</b> <ol style="list-style-type: none"> <li>1. Commission development of feasibility study to convert Council vehicles to electric.</li> <li>2. Develop transition plan based on feasibility study.</li> <li>3. Replace fleet based on transition plan.</li> </ol>	2022	Mitigation
1.14	<b>Embed climate change into Council processes</b> <ol style="list-style-type: none"> <li>1. Update procurement policy to include sustainability targets.</li> <li>2. Update tender applications to include sustainability criteria tailored to the type of suppliers.</li> </ol>	2023	Mitigation
1.15	<b>Reduce Council's Scope 3 emissions</b> <ol style="list-style-type: none"> <li>1. Commission a report on Council divesting from fossil fuel investments.</li> <li>2. Implement report.</li> </ol>	2024	Mitigation
1.16	<b>Decrease the environmental impact of road, footpath and playground materials</b> <ol style="list-style-type: none"> <li>1. Identify research institutions exploring use of low carbon and/or high recycled content concrete and asphalt/emulsion options.</li> <li>2. Undertake benchmarking research to understand what is being done by other Councils.</li> <li>3. Plan transition from current materials to new materials.</li> <li>4. Implement use of new materials.</li> </ol>	2025	Both
Advocacy			
1.17	<b>Advocate to the Victorian and Australian governments to declare a climate emergency and to act in accordance with climate science</b>	Ongoing	Both



## THEME 2: RESILIENT AND ADAPTIVE COMMUNITIES

Climate change will impact everyone in the Shire. Direct impacts include increased intensity and frequency of extreme weather events such as prolonged heatwaves, drought, floods and bushfires. Indirect impacts include worsening air quality, changes in the spread of infectious diseases, risks to food safety and drinking water quality, and effects on mental health<sup>7</sup>.

These risks will have a greater impact on those who are already vulnerable such as older people, people with disabilities, or those in unsecure housing.

Council plays a key role in educating and sharing information with residents, schools and businesses.

To address the Climate Emergency, Council will use its leadership and resources to partner with the community, other Councils, Traditional Owner groups and the Barwon South West Climate Alliance to amplify community voices and undertake collective advocacy and action.

*“Great spirit Bundjil told us to take care of the great life within the land. To only take what you need without selfishness. Wadawurrung shared their knowledge of singing, dance, trade, camps, fishing, hunting, paintings, and homes to us to protect for our future generations. We all need to help<sup>11</sup>.”*

- Stephan Skinner, Wadawurrung Country Plan (2020-2030), page 2

### What Council is already doing

- **Edible Gardens Program** - Council hosts a series of webinars aimed to educate the community on how to grow food at home without the use of chemicals.
- **Reusable nappy workshops** - Council is providing educational workshops and a set of cloth nappies for parents with babies to encourage the uptake of reusable nappies.
- **Community Strengthening Environment and Sustainability grant stream** - Funding opportunity for community groups seeking to do environment and sustainability focussed projects.
- **Solar funding** - Council has received \$39,000 in funding to assist with installing solar panels on community facilities.

#### DID YOU KNOW?



**Heat is the most direct consequence of climate change. Heatwaves cause more deaths than any other natural hazard.**

Adapt Grampians (2021-2025), Grampians Region Climate Adaptation Strategy

#### DID YOU KNOW?



**Golden Plains is one of Victoria's premier areas for intensive agriculture with a large portion of rural land used for wool, beef, chicken, pork, lamb, eggs and grain production, as well as viticulture.**

Golden Plains Shire Council Environment Strategy (2019-2027).

<sup>7</sup>Adapt Grampians (2021-2025), Grampians Region Climate Adaptation Strategy.

## ACTIONS

ID	Action	Start year	Mitigation/ Adaptation
Implementation			
2.1	<b>Embed climate change into Council grant processes</b> <ol style="list-style-type: none"> <li>1. Update assessment criteria for Community Strengthening Grant applications to require climate change as a consideration.</li> </ol>	2022	Both
2.2	<b>Increase the community's knowledge about climate change</b> <ol style="list-style-type: none"> <li>1. Identify community-led climate focused art projects (for example, working with GPArts Inc.).</li> <li>2. Collaborate with the community to deliver art projects.</li> </ol>	2023	Adaptation
2.3	<b>Embed climate change into Council programming</b> <ol style="list-style-type: none"> <li>1. Present Council's Climate Emergency Plan during each Community Leadership Program.</li> <li>2. Include tackling climate change and its impact on health as a criteria in the Community Leadership program project development process.</li> </ol>	2023	Both
2.4	<b>Identify opportunities for improving Farmers Market practices</b> <ol style="list-style-type: none"> <li>1. Assist in audit process to identify opportunities for sustainable practices.</li> <li>2. Develop sustainability guidelines for stallholders at Council run markets.</li> <li>3. Incorporate findings from audit into future planning processes, disseminate guidelines to stallholders and provide ongoing support.</li> </ol>	2025	Both
2.5	<b>Increase the number of mitigation and adaptation focused projects undertaken by community in the Shire</b> <ol style="list-style-type: none"> <li>1. Plan resourcing and application guidelines for the establishment of a Climate Emergency stream in the Community Strengthening Grants program.</li> <li>2. Establish the new grant stream.</li> </ol>	2025	Both
2.6	<b>Assist schools to embed sustainability into their processes</b> <ol style="list-style-type: none"> <li>1. Promote and support schools to sign up to become a Resource Smart school through Sustainability Victoria.</li> </ol>	2026	Both
2.7	<b>Increase the community's ability and knowledge to grow their own food</b> <ol style="list-style-type: none"> <li>1. Identify areas for new or expanded community gardens.</li> <li>2. Expand community gardens and educate residents about growing food.</li> </ol>	2026	Both
2.8	<b>Support community facilities to decrease the environmental footprint of the facility</b> <ol style="list-style-type: none"> <li>1. Offer free sustainability audits for community facilities not falling within Council's remit.</li> <li>2. Support implementation of upgrades (for example, support applying for grants, exploring bulk buy opportunities, fund matching).</li> </ol>	2027	Both
2.9	<b>Increase the Golden Plains Shire community's knowledge about climate change</b> <ol style="list-style-type: none"> <li>1. Update the assessment criteria for community seed funding applications to require climate change as a consideration.</li> <li>2. Review and update the Community Coordinator toolkit to embed climate change information.</li> <li>3. Provide education to Community Coordinators about how climate change may impact their community.</li> <li>4. Offer community education and capacity building initiatives.</li> </ol>	2027	Both

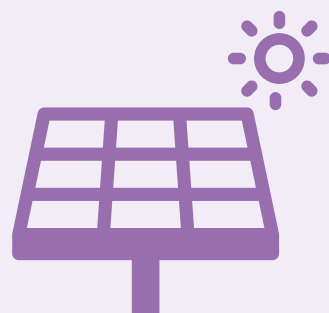
ID	Action	Start year	Mitigation/Adaptation
<b>Collaboration</b>			
<b>2.10</b>	<b>Increase the community's knowledge about solar and battery storage</b> <ol style="list-style-type: none"> <li>1. Facilitate access to expert advice on solar and battery storage for Golden Plains Shire businesses and residents.</li> </ol>	2027	Mitigation
<b>2.11</b>	<b>Increase student engagement with the natural environment</b> <ol style="list-style-type: none"> <li>1. Develop a planting fund for all primary schools to plant annually on school or public land.</li> <li>2. Promote the funding opportunity to schools.</li> <li>3. Follow up with schools to monitor progress via survey, photos and conversations with teachers.</li> </ol>	2027	Mitigation
<b>Investigation</b>			
<b>2.12</b>	<b>Increase business understanding of climate change and increase their capacity to reduce their emissions and adapt</b> <ol style="list-style-type: none"> <li>1. Develop and disseminate a survey for businesses to understand their current sustainability efforts and where support is needed.</li> <li>2. Analyse results from business survey to identify what support can be provided.</li> <li>3. Develop and deliver programs to support businesses.</li> </ol>	2022	Both
<b>2.13</b>	<b>Improve comfort, reduce energy bills, build climate resilience and improve health outcomes for vulnerable households in the Shire</b> <ol style="list-style-type: none"> <li>1. Explore opportunities for building upgrades for vulnerable households including those of older people and people on low incomes.</li> <li>2. Support implementation of upgrades.</li> </ol>	2024	Mitigation
<b>2.14</b>	<b>Increase agricultural business capacity to reduce their emissions and adapt</b> <ol style="list-style-type: none"> <li>1. Investigate how Council can best support agricultural businesses to respond to the climate emergency.</li> <li>2. Develop plan to support agricultural businesses.</li> <li>3. Deliver plan.</li> </ol>	2025	Both
<b>2.15</b>	<b>Increase students' knowledge of local food and their ability to grow their own food</b> <ol style="list-style-type: none"> <li>1. Investigate options for students to grow their own food (for example, through the Stephanie Alexander Kitchen Garden Foundation).</li> <li>2. Secure partnership and select schools to participate.</li> <li>3. Oversee delivery of program.</li> </ol>	2026	Both
<b>2.16</b>	<b>Explore implementation of community driven renewable energy in Golden Plains Shire to reduce reliance on fossil fuels</b> <ol style="list-style-type: none"> <li>1. Undertake research to better understand steps, costs and other resources required.</li> </ol>	2027	Mitigation
<b>2.17</b>	<b>Promote using resources more efficiently</b> <ol style="list-style-type: none"> <li>1. Investigate feasibility and locations for expanding repair cafes and other spaces that are designed for shared use of resources such as toys, garden tools etc.</li> </ol>	2029	Mitigation





## DID YOU KNOW?

Community energy projects are those in which a community comes together to develop, deliver and benefit from sustainable energy. They can involve energy supply projects such as renewable energy installations and storage, and energy reduction projects such as energy efficiency and demand management. Community energy can even include community-based approaches to selling or distributing energy.



## THEME 3: CARING FOR THE LAND

Golden Plains is comprised of two distinct environments or bioregions: the Central Victoria Uplands and the Victorian Volcanic Plains. These bioregions support 372 flora species and 191 fauna species and include three major river systems. Most of the land in the Shire is defined as ‘bushfire prone’.

Traditional Owners and Custodians are the first people to care for the land, cultivated through a deep sense of respect for natural resources.

However, changes to temperature, rainfall, storm and fire patterns due to climate change will put species and ecosystems at risk<sup>8</sup>. Harsher fire weather and longer fire seasons will also put people and infrastructure in jeopardy.

*“Over thousands of years, our Ancestors developed a deep understanding of natural systems - knowledge that was passed down through the generations. It guided how we cared for Country and how we made sure that it could sustain us year after year.”*

- Eastern Maar Country Plan (2015)

The preservation of biodiversity and enhancement of environmental resilience is of vital importance for the function of ecosystems, persistence of wildlife and community safety.

Council’s efforts through this focus area include working to increase the resilience of communities and ecosystems.

### RELEVANT THREATS TO WADAWURRUNG:

1. Urban development
2. Lack of coordination between land managers
3. Bushfires
4. Drought
5. Weeds
6. Rabbits

### DID YOU KNOW?

**Victorian Volcanic Grasslands** used to cover much of Wadawurrung Country. The central plains were covered in vast open areas of grasslands with small patches of woodlands.

**They are classified as a threatened ecological community.**



#### Plants

- Kangaroo grass
- Wallaby grasses
- Spear grasses
- River gums

#### Animals

- Yarra Pygmy Perch
- Plains Wanderer
- Striped Legless Lizard

Wadawurrung Country Plan (2020-2032), page 2.

<sup>8</sup>Impacts of Climate Change, South West Climate Change portal, viewed 17 May 2022 [www.swclimatechange.com.au/cb\\_pages/environmental\\_impacts.php](http://www.swclimatechange.com.au/cb_pages/environmental_impacts.php).

## What Council is already doing

- **Tree planting**
  - Council has planted more than 10,000 native trees, shrubs and grasses over the last three years with future planting scheduled to restore biodiversity and repair damaged ecosystems.
  - Council will participate and support the National Tree Planting day by hosting events and supporting local community groups to undertake their own National Tree Planting event.
  - Council is seeking to implement a street tree planting program, targeting vacant nature strips within townships across the Shire.
- **Pest, plant and animals** - Council manages pest, plant and animals throughout its reserve network and implements the Rabbit Management Strategy 2021-2031.
- **Fire regeneration** - Council has facilitated the return of Traditional Owner use of fire to Council reserves as well as undertaking low intensity, low risk ecological burns with their own burn team to support native flora regeneration and reduce fire risk in key locations.

## ACTIONS

ID	Action	Start year	Mitigation/Adaptation
Implementation			
3.1	<b>Restore biodiversity and repair damaged ecosystems</b> <ol style="list-style-type: none"> <li>1. Develop a revegetation plan for Council reserves.</li> <li>2. Plant a tree for every resident in the Shire.</li> </ol>	2025	Both
3.2	<b>Support native flora regeneration and reduce fire risk in key locations</b> <ol style="list-style-type: none"> <li>1. Develop a planned burn strategy, incorporating cultural burning practices requirements and that burns be led by Wadawurrung Traditional Owners where possible.</li> <li>2. Implement strategy.</li> </ol>	2027	Adaptation
3.3	<b>Improve outcomes for the natural environment</b> <ol style="list-style-type: none"> <li>1. Deliver against the Regional Catchment Strategy and partner with the Corangamit Catchment Management Authority on land and water management projects including both broad scale management projects and community projects.</li> </ol>	Ongoing	Adaptation
Collaboration			
3.4	<b>Ensure a healthy and resilient natural environment</b> <ol style="list-style-type: none"> <li>1. Continue working with Traditional Owners to embed traditional knowledge and practices into Council's land management practices.</li> </ol>	Ongoing	Both
3.5	<b>Build working relationships with Traditional Owner natural resource management resources for on-ground works, revegetation, fire management and other climate change initiatives</b>	Ongoing	Both





## THEME 4: CLIMATE RESPONSIVE DEVELOPMENT

Council is responsible for implementing the Victorian Planning Provisions at the local level and prepares and adopts the Municipal Planning Strategy. Council also controls the materials that are used in the facilities it builds and for local infrastructure such as roads, footpaths and other assets.

However, many materials commonly used in the construction of buildings and infrastructure have high embedded carbon emissions. In addition, despite current energy standards and Planning Scheme provisions, most existing Victorian houses perform to low energy standards.

With low or zero carbon, recycled content materials and efficient alternatives becoming more available, there is significant opportunity for climate responsive development across the municipality. Improving building development and operations reduces emissions and increases comfort and affordability in the long term.

Given the number of buildings and expanse of infrastructure that Council builds, owns or manages, Council will take action to lead by example and advocate for change. Council will also support owners, occupiers and landlords to take steps to implement climate friendly features on their property.

### RELEVANT THREATS TO WADAWURRUNG:

- 7. Urban development
- 8. Bushfires

### DID YOU KNOW?

**Golden Plains Shire is growing quickly with the population estimated to increase to 42,193 people by 2041, serving an important role in the growth of metropolitan Melbourne.**

*Adapt Grampians (2021-2025), Grampians Region Climate Adaptation Strategy*



## What Council is already doing

- **Strategic Bushfire Risk Assessment** - Council commissioned an assessment of bushfire hazard to inform a Shire-wide Settlement Plan.
- **Planning Scheme Review** - To identify opportunities to enhance the effectiveness and efficiency of the Planning Scheme.
- **Integrated water management** - Council works as part of two integrated water management forums to look for improved ways to manage water across the Shire.
- **Green Blue Infrastructure** - Council led the development of a guide for Green Blue Infrastructure for small towns. The guide will be used to help Council install infrastructure that's both water sensitive and adapted to future climate conditions.

## ACTIONS

ID	Action	Start year	Mitigation/Adaptation
Implementation			
4.1	<b>Address impacts of climate change, urbanisation and other water challenges at the regional and local level</b> <ol style="list-style-type: none"> <li>1. Identify at least three opportunities for implementing integrated water management projects across the Shire.</li> <li>2. Implement projects.</li> </ol>	2024	Adaptation
4.2	<b>Decrease the environmental impact of new developments.</b> <ol style="list-style-type: none"> <li>1. Investigate options to update the Planning Scheme and Infrastructure Design Manual to include climate change related minimum standards.</li> <li>2. Engage with Council and community around potential updates.</li> <li>3. Develop Plan to include relevant changes.</li> </ol>	2024	Both
Collaboration			
4.3	<b>Support landholders in the Shire to mitigate and adapt to climate change</b> <ol style="list-style-type: none"> <li>1. Connect landholders to information and opportunities to implement climate friendly features on their property (for example, renewable energy, regenerative agriculture, grey water tanks, biodiversity protection, sustainable heating or cooling).</li> <li>2. Investigate incentive opportunities (for example, reduced rates) for having climate friendly features on a property.</li> </ol>	Ongoing	Both
Advocacy			
4.4	<b>Decrease the environmental impact of new developments</b> <ol style="list-style-type: none"> <li>1. Collaborate with the Barwon South West Climate Alliance to advocate to the Victorian Government to strengthen its response to climate change by strengthening environmentally sustainable design requirements in the Victorian Planning Scheme to include measures such as zero carbon building standards, green infrastructure, tree protection and ecological connectivity, sustainable transport, electric vehicle charging infrastructure.</li> </ol>	Ongoing	Both

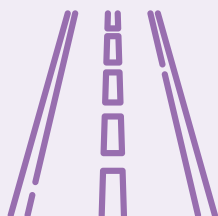


## THEME 5: SUSTAINABLE TRANSPORT AND TRAVEL

Council plays a significant role in planning local transport networks, impacting the transport choices made by the community each day.

However, the number of residents that live near public transport in Golden Plains Shire is significantly lower than the State average. There is also currently no electric vehicle (EV) infrastructure and there is a need for streetscapes and infrastructure that support safe walking and cycling.

As part of this Climate Emergency response, Council will work to reduce barriers to making climate friendly travel choices through improving infrastructure, increasing education and advocating for funding for upgrades to infrastructure.



### DID YOU KNOW?

Golden Plains Shire has 1,800 km of road networks, largely used by residents to travel to the larger urban areas of Ballarat and Geelong for schooling, employment and access to goods and services.



## What Council is already doing

- **Integrated Transport Strategy** - Council is working with the Geelong Region Alliance<sup>9</sup> on a Transport Strategy that will address gaps and weaknesses in the intra-regional transport network through to 2041.
- **Tracks and Trails Strategy** - This project/strategy will guide Council's strategic planning, development and delivery of the Shire's diverse trail network and support active transport, physical activity and engagement with our natural environment.
- **Golden Plains Transport Connections Study** - The study will identify current and future transport needs in the Shire and provide an evidence base to support advocacy for greater transport connections.

## ACTIONS

ID	Action	Start year	Mitigation/Adaptation
Implementation			
5.1	<b>Provide education to residents about low carbon travel</b> <ol style="list-style-type: none"> <li>1. Research organisations to partner with and collate information.</li> <li>2. Secure partnership.</li> <li>3. Host demos and connect interested residents with information about EVs, electric scooters and electric bikes.</li> </ol>	2026	Mitigation
5.2	<b>Increase use of public transportation in the Shire</b> <ol style="list-style-type: none"> <li>1. Audit Council bus stops across the Shire to understand where upgrades are needed.</li> <li>2. Plan and prioritise upgrades to bus stops across the Shire.</li> <li>3. Upgrade bus stops.</li> </ol>	2027	Mitigation
5.3	<b>Increase active transport in the Shire. Estimate baseline number of residents engaging in active transport in the Shire</b> <ol style="list-style-type: none"> <li>1. Develop an action plan for increasing active transport in the Shire.</li> <li>2. Deliver the action plan.</li> </ol>	2028	Mitigation
Advocacy			
5.6	<b>Improve public transportation options for Golden Plains Shire residents</b> <ol style="list-style-type: none"> <li>1. Advocate for implementation of the Regional Transport Strategy developed by the G21.</li> </ol>	2025	Mitigation
5.7	<b>Decrease use of internal combustion engine vehicle use in the Shire</b> <ol style="list-style-type: none"> <li>1. Actively seek grants for funding to install the use of EV chargers in high density areas in the Shire.</li> </ol>	Ongoing	Mitigation

<sup>9</sup>The Geelong Region Alliance is a formal alliance of government, business and community organisations working together to improve the lives of people within the Geelong region across five municipalities including Golden Plains Shire.

# APPENDIX A GLOSSARY

Term	Definition
<b>Active transport</b>	Physical activity undertaken for transport purposes, rather than recreation, e.g. cycling or walking.
<b>Adaptation</b>	Learning to live with, adjusting or making changes to cope with the impacts of climate change.
<b>Biodiversity</b>	The variety of all life-forms and the ecosystems of which they are a part, including plants, animals, fungi, protists (including algae) and bacteria, and their encoded genes.
<b>Carbon dioxide equivalent (CO<sub>2</sub>-e)</b>	A measure for simply estimating the global warming potential of various greenhouse gases, such as methane or nitrous oxide, against carbon dioxide.
<b>Carbon neutral</b>	Achieving an overall balance between greenhouse gas emissions produced and greenhouse gas emissions taken out of the atmosphere, resulting in a net zero amount.
<b>Carbon offset</b>	An exchange or reduction of emissions to compensate for emissions made elsewhere, commonly measured in tonnes of carbon dioxide-equivalent (CO <sub>2</sub> -e).
<b>Carbon sequestration</b>	The long-term storage of carbon dioxide from the atmosphere naturally in plants, soils, water bodies and the ocean, or capturing it with technology and permanently storing it underground.
<b>Climate change</b>	The long-term rise in global average temperature, caused by human influence, resulting in negative effects such as sea level rise, ocean acidification, extreme weather events, loss of biodiversity and increase in human suffering.
<b>Climate emergency</b>	Recognition that urgent action is required to avoid the worst effects of climate change.
<b>Climate Emergency Declaration</b>	Declaring a Climate Emergency means that the organisation prioritises and takes a holistic view of how climate change can impact Council activities, the community and environment of the Shire.
<b>Divestment</b>	Reducing and then eliminating connection to funds invested in fossil-fuel supporting industries, typically through banking, loans, shares and other financial portfolios.
<b>Environmentally Sustainable Design (ESD)</b>	A school of design that seeks to improve building performance, reduce environmental impact, resource use and waste, and create healthy environments for occupants and users.
<b>Greenhouse Gas (GHG) Emissions</b>	Gases such as carbon dioxide, methane and others that, when present in the atmosphere, increase the amount of solar radiation absorbed, leading to a rise in global average temperature. GHGs are primarily released by the combustion of fossil fuels.
<b>Intergovernmental Panel on Climate Change (IPCC)</b>	United Nations body for assessing the science related to climate change. The panel provides regular assessments of the scientific basis of climate change, its impacts and future risks, and options for adaptation and mitigation.
<b>Mitigation</b>	Reducing and preventing emissions of greenhouse gases, and the sequestration of greenhouse gases from the atmosphere.
<b>Net zero (emissions)</b>	Carbon emissions are produced, but balanced out with equivalent offsets. Carbon dioxide is captured and sequestered equivalent to the CO <sub>2</sub> emitted.
<b>Renewable energy</b>	Energy generated from renewable sources such as solar, wind or geothermal, in contrast to the energy from non-renewable fossil fuels such as coal, natural gas or oil.
<b>Resilience</b>	Ability to recover or adapt to changes in environmental and/or living conditions at a personal, community, economic and ecological level.

# APPENDIX B METHODOLOGY

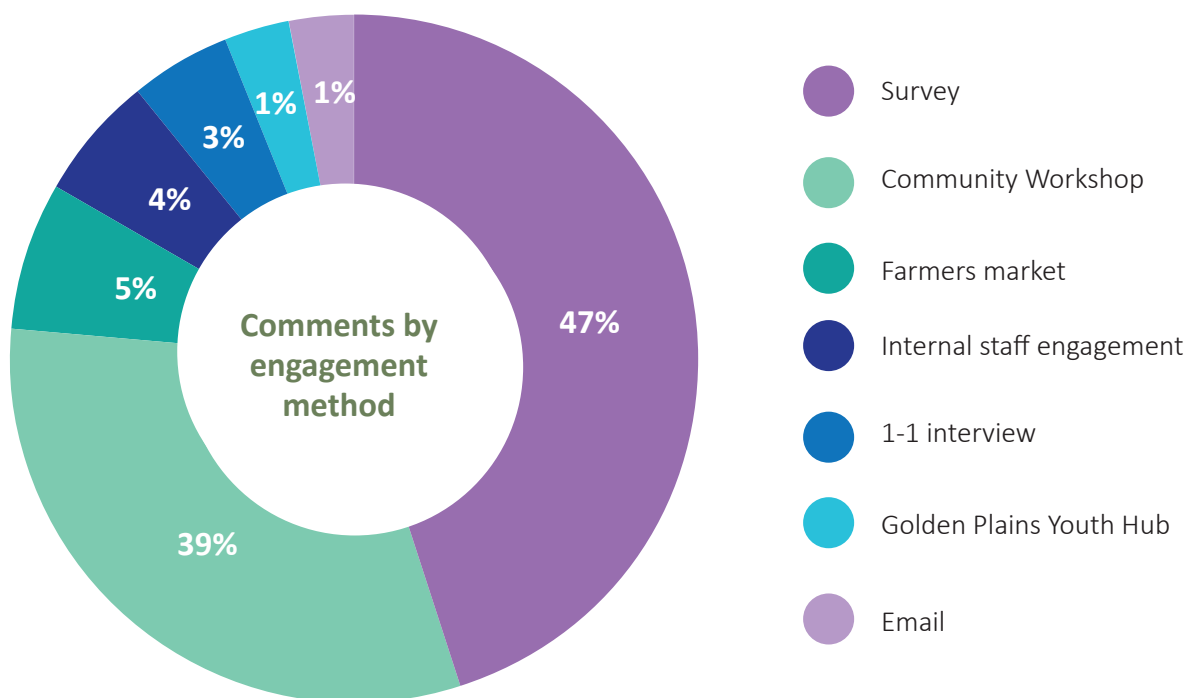
## COMMUNITY CONSULTATION

The Climate Emergency Plan was informed by consultation with Wadawurrung, community members and businesses. Overall, Council received **636 discrete comments from approximately 200 people**.

Stakeholders were invited to provide their thoughts through the following consultation methods:

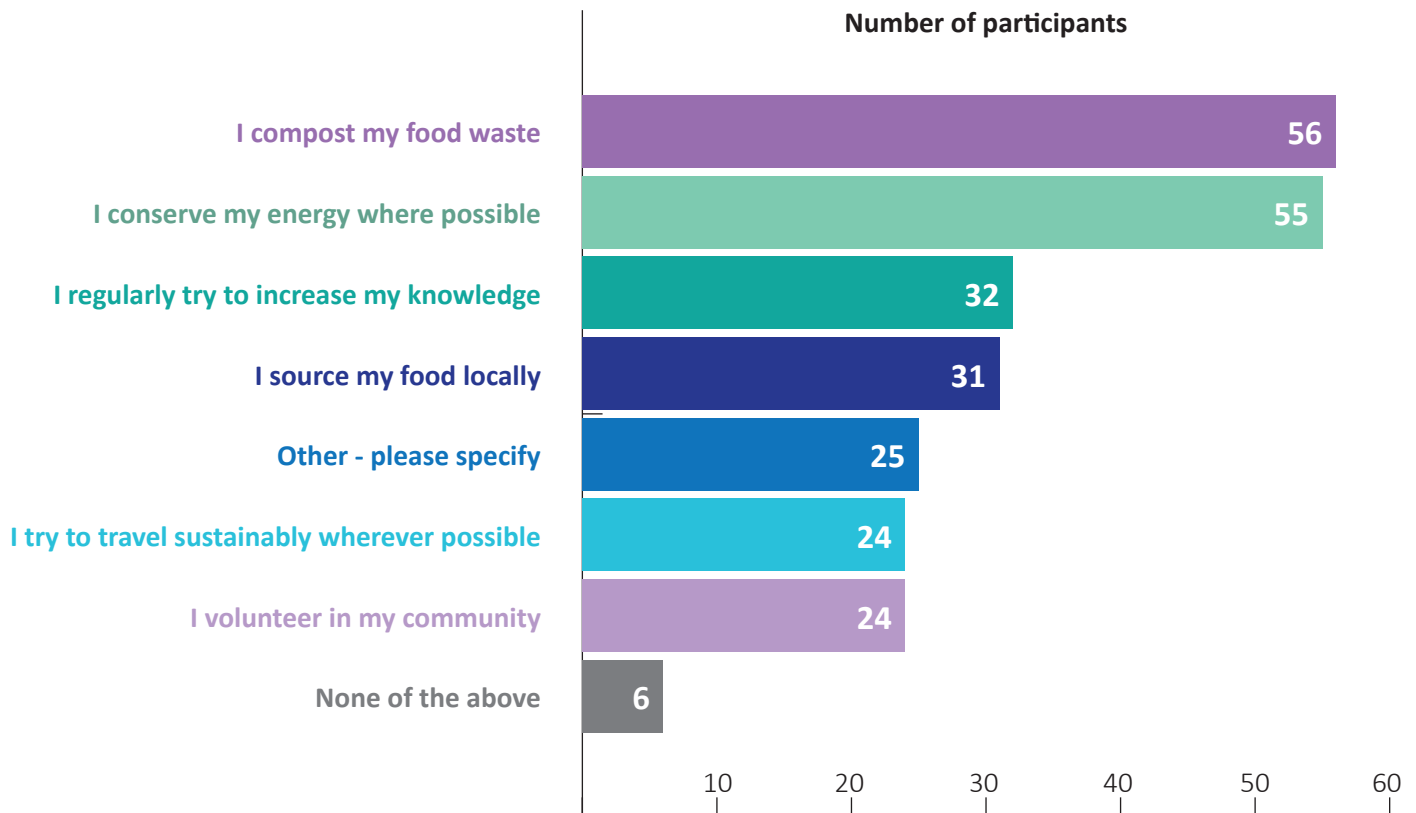
- Review and input by Wadawurrung Traditional Owner Aboriginal Corporation
- A Have Your Say survey
- Three in-person community workshops in Teesdale, Dereel, Smythesdale and one online workshop
- Booths at the Golden Plains Farmers' Market, Smythesdale Market, Golden Plains Community Fair in Bannockburn, and at the Bannockburn Youth Hub
- Engagement with students at Woody Yaloak (Ross Creek Campus) and Meredith Primary Schools
- Nine 1:1 interviews with businesses and community groups in the Shire
- Comments sent by email from community members.

Most feedback was received via the survey, which had **78 responses**, and the community workshops. Most survey respondents indicated they were based in Bannockburn (42%) and fell into the 36 to 50 year age bracket (33%).





### What are you currently doing to reduce your impact on the environment? (Survey participants)



### With Council support, what would you like to start doing to reduce your impact on the environment? (Survey participants)



## OTHER CONSULTATION

The actions were also informed by conversations with staff from seven Victorian Councils that have effective Climate Emergency Plans and Golden Plains Shire internal staff teams.

Internal staff teams that were consulted include:

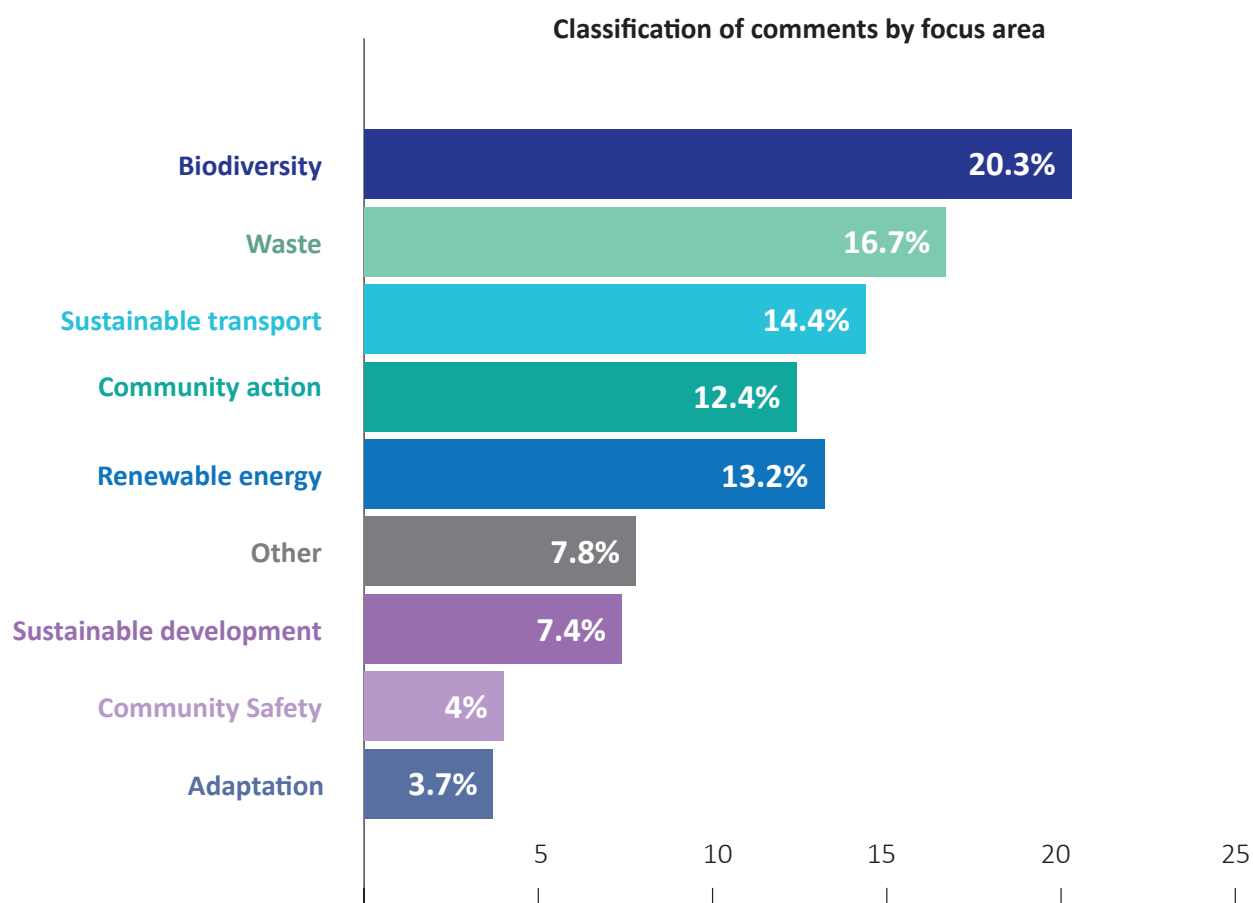
- Finance
- Strategic planning
- Statutory planning
- Capital works
- Asset services
- Health, Wellbeing and Youth
- Community Development
- Community Safety
- Community, Places and Environment
- Governance and Risk
- Facilities



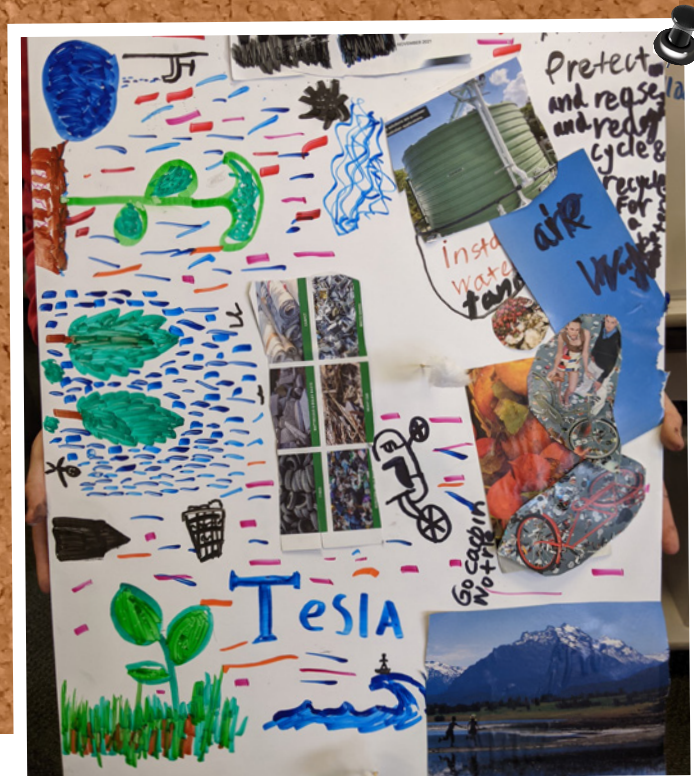
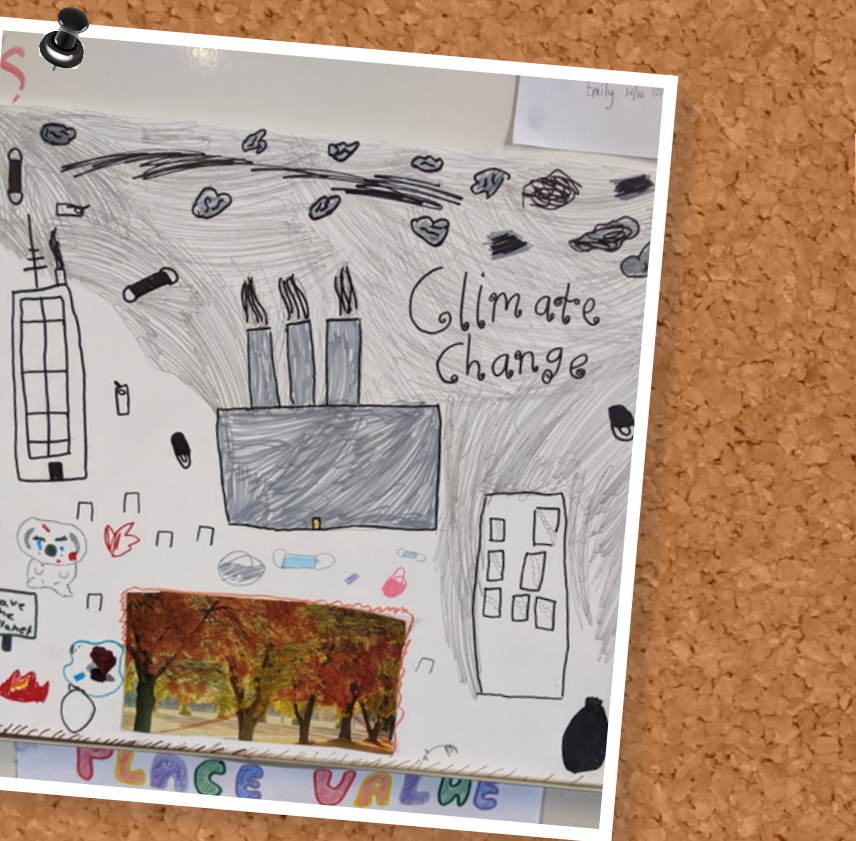
## DEVELOPMENT OF ACTIONS

To ensure all comments and suggestions were considered in the development of actions, the following process was taken:

- A review of more than 10 current Climate Emergency Plans developed by other Victorian Councils was undertaken, providing the opportunity to benchmark actions against current plans.
- Comments from the engagement were then screened based on value for money, feasibility within legislative bounds, the resourcing required to deliver the action and whether the action was already happening through a different Council area.
- Remaining comments were then classified into eight focus areas, shown in the figure below, as well as numerous sub-focus areas, and then grouped together based on similarity.







- The actions underwent multiple reviews prior to finalisation:

Reviewed by	Date
Environment and Sustainability Coordinator	May 2022
Environment and Sustainability team and other relevant Council teams	May 2022
Community, Places and Environment Manager	June 2022
Director of Infrastructure and Development	June 2022
Councillors	July 2022- Strategic Council Meeting
Golden Plains Shire community	September 2022
Endorsed by Councillors for adoption	October 2022









2 Pope Street, Bannockburn, VIC 3331  
19 Heales Street, Smythesdale, VIC 3351

PO Box 111, Bannockburn, VIC 3331

☎ 5220 7111

@ enquiries@gplains.vic.gov.au

💻 goldenplains.vic.gov.au

#### CUSTOMER HUB HOURS

Golden Plains Civic Centre, Bannockburn  
8.30am to 5pm, Monday to Friday

The Well, Smythesdale  
8.30am to 5pm, Monday to Friday

🐦 @GPSCouncilNews

📷 lovegoldenplains

📘 GoldenPlainsShire

👤 GoldenPlainsMayor