

ATTACHMENTS

**Under Separate Cover
Council Meeting**

6.00pm Tuesday 26 April 2022

Table of Contents

7.8	Northern Streetscape Framework Plan - Adoption	
	Attachment 1 Northern Streetscape Framework Plan.....	5

NORTHERN STREETSCAPES FRAMEWORK PLAN 2022



SCARSDALE



SMYTHESDALE



LINTON

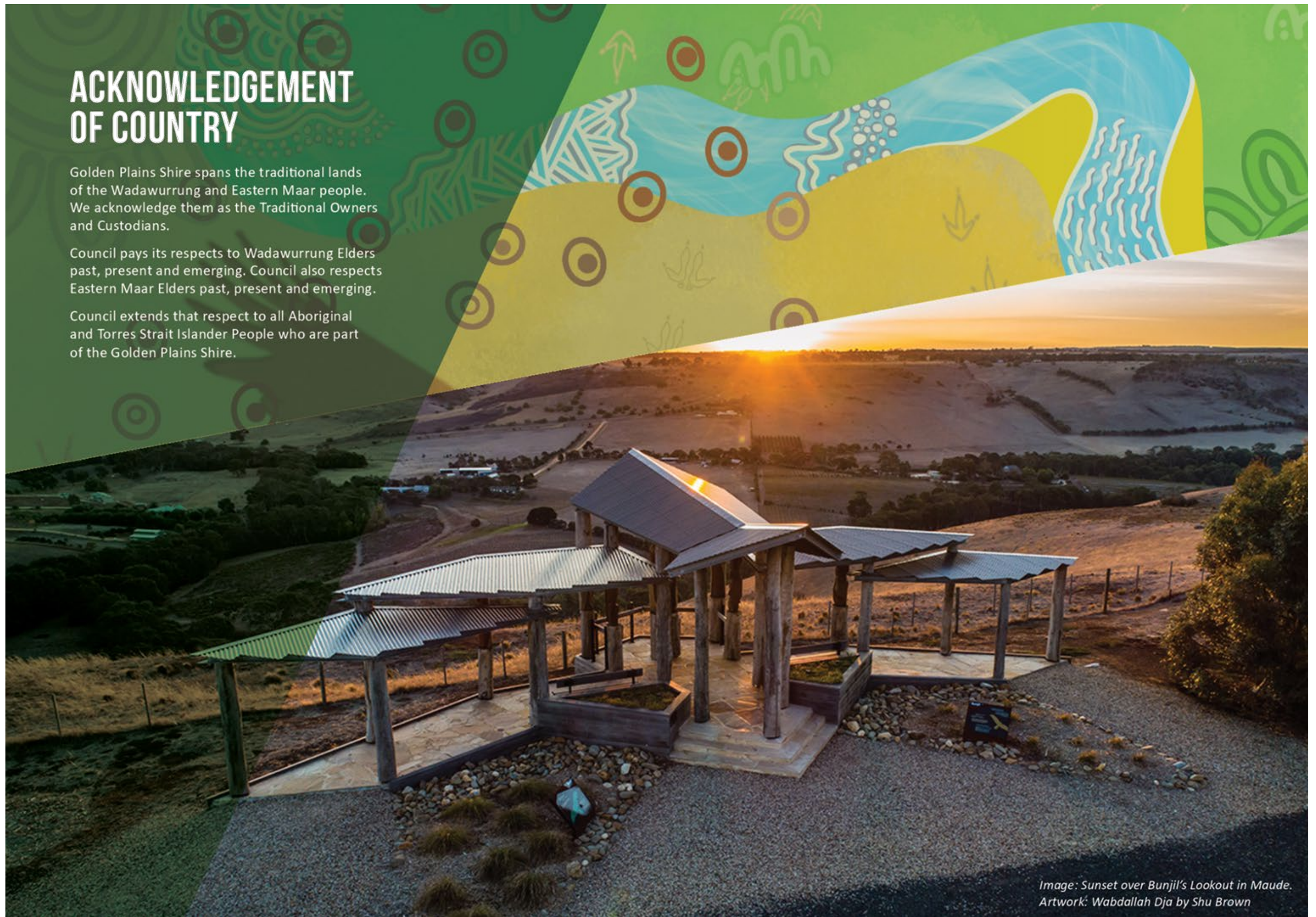


ACKNOWLEDGEMENT OF COUNTRY

Golden Plains Shire spans the traditional lands of the Wadawurrung and Eastern Maar people. We acknowledge them as the Traditional Owners and Custodians.

Council pays its respects to Wadawurrung Elders past, present and emerging. Council also respects Eastern Maar Elders past, present and emerging.

Council extends that respect to all Aboriginal and Torres Strait Islander People who are part of the Golden Plains Shire.



*Image: Sunset over Bunjil's Lookout in Maude.
Artwork: Wabdallah Dja by Shu Brown*

Quality Assurance

Tract

Phase 3

Final Streetscape Framework Plan

Prepared for

Golden Plains Shire Council

Project Number

321-0145-00-L02-RP01

Revisions

Issue	Date	Description	Prepared By	Reviewed By	Project Principal
01	19 May 2021	Background Assessment - DRAFT	SL		DC
02	07 June 2021	Background Assessment	SL		DC
03	21 July 2021	Concepts & Streetscape Framework Plan	SL		DC
04	14 September 2021	Concepts & Streetscape Framework Plan	SL		DC
05	05 November 2021	Updates to Concepts & Streetscape Framework Plan	SL		DC
06	11 November 2021	Community engagement	SL		DC
07	15 March 2022	Updates to Concepts & Streetscape Framework Plan	SL		DC
08	04 April 2022	Updates to Concepts & Streetscape Framework Plan	SL		DC

Project Name	Drawing No.	Revision	Date	Drawn	Checked	Project Principal	
Golden Plains - Streetscapes Framework Plan	321-0145-L03-RP01	08	04.04.2022	SL	DC	DC	03

Contents

Tract

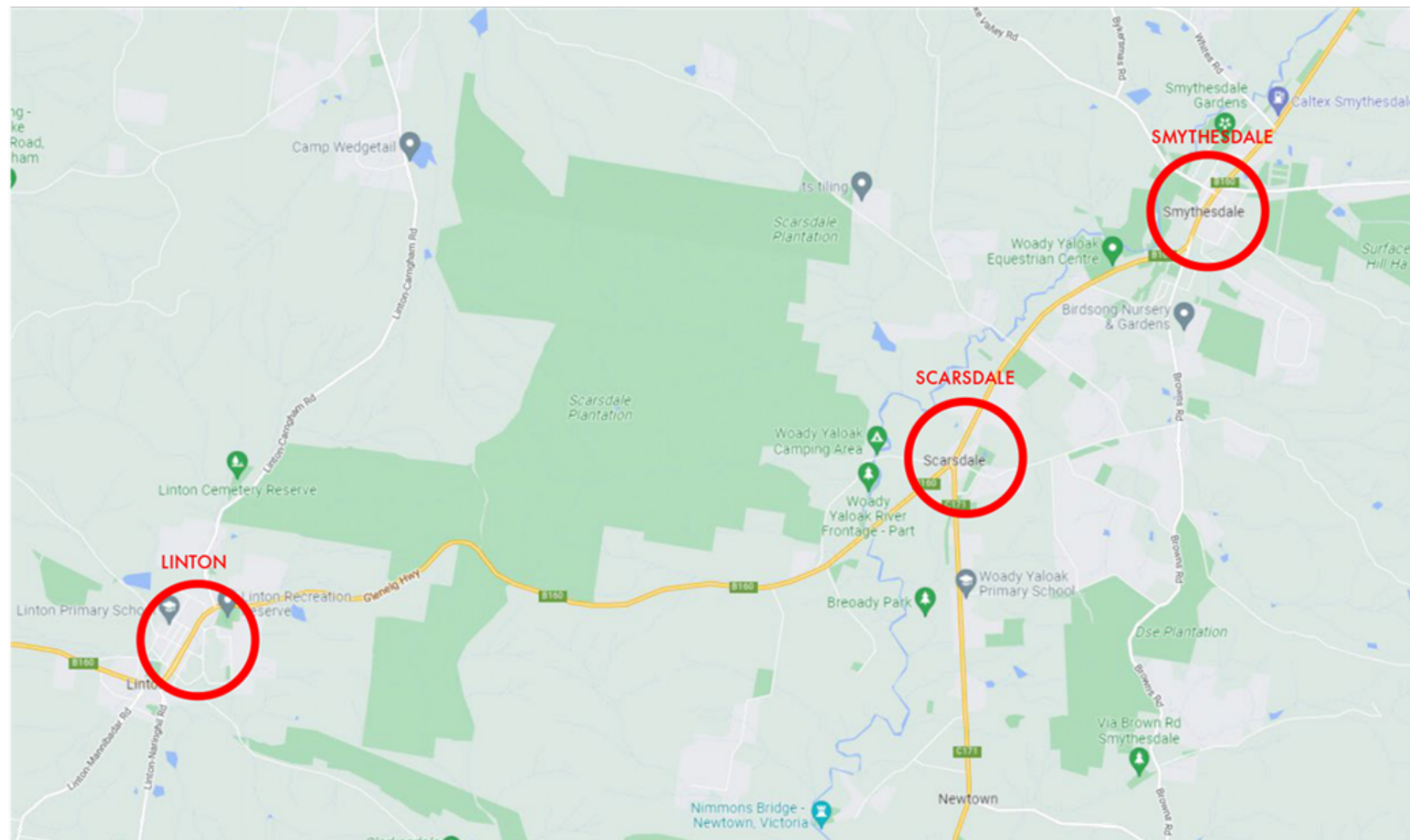
Project Objectives	04
Community Feedback	05
Smythesdale	06
Scarsdale	12
Linton	18

Project Name	Drawing No.	Revision	Date	Drawn	Checked	Project Principal	
Golden Plains - Streetscapes Framework Plan	321-0145-103-RP01	08	04.04.2022	SL	DC	DC	04

Tract

The Northern Streetscapes Project will be delivered with respect to Rural Roads Victoria road safety standards, noting that this beautification project **does not encompass major modification of road alignment, major intersection upgrades or undergrounding power.**

Maintenance program delivered by Council.



Project Name	Drawing No.	Revision	Date	Drawn	Checked	Project Principal	
Golden Plains - Streetscapes Framework Plan	321-0145-103-RP01	08	04.04.2022	SL	DC	DC	05

Tract

This community feedback has been used to make changes and updates to the concept designs for each township to better meet the needs of these communities. Below is a summary of community suggested feedback on improvement of the concept design, based on the 6 pillars **Road Function, Parking, Pedestrian Safety & Access, Tree & Planting, Street furniture & place marking, and Maintenance**. In these 6 pillars, Road Function is a **Department of Transport (DOT) asset** and to be considered in other projects.

29 residents completed survey and 2 community members attended the in-person engagement session.

LEGEND		DOT Asset	Council Asset	Private Assets		
SMYTHESDALE	Road Function	Parking	Pedestrian Safety & Access	Trees & Planting	Street furniture & Place marking	Maintenance
Feedback	Reduce speed through township	More parking required	Crossing closer or directly in front of supermarket	Elm trees are not supported as they are considered messy and invasive	Coordination with IGA development	Increase regular maintenance
	Under take traffic survey	Parallel parking is not supported. Community prefer to maintain angled parking.	Flashing light/ traffic light at IGA pedestrian crossing	Plant more trees	Increase bins near café	
	Install central lane divider	Consider parking for caravan to attract visitors	Crossing must be well marked and visual	Flowering trees preferred	More seating	
	Consider public transport links		Relocate exit from IGA to back entrance, avoid exit to highway	Drought tolerance, native species preferred	Increase street lighting	
	Create more direct linkage between township and rail trail				Street banners are supported	
Opportunities	This is DOT asset. To be considered in other projects.	Potential parking for caravans	Formalise existing pedestrian crossings near the church and bus stop, i.e. provide zebra line marking.	Suggest create garden bed with low planting where there are crossings and seatings.	Suggest install light bollards where there is seating and pedestrian crossings.	Council to develop an Open Space Management Plan in 2022.
			Potential relocation of crossing at cafe to near IGA / Post office as this is the informal crossing used by residents.	Native species, flowering species are to be considered.	Provide bike racks at picnic setting, and at seating near memorial.	
					Install street banners	

Project Name	Drawing No.	Revision	Date	Drawn	Checked	Project Principal
Golden Plains - Streetscapes Framework Plan	321-0145-103-RP01	08	04.04.2022	SL	DC	DC

Tract

20 residents completed survey and 12 to 15 community members attended the in-person engagement session.

LEGEND		DOT Asset	Council Asset	Private Assets		
LINTON	Road Function	Parking	Pedestrian Safety & Access	Trees & Planting	Street furniture & Place marking	Maintenance
Feedback	Reduce speed through township	Current parking space is sufficient	Crossing at takeaway shop	Tree roots damaging footpath is a concern	Better lighting to illuninate roads and walkways	Require regular maintenance.
	Blister and speed humps are not supported in proposed location.		Crossing near bus stop	Use native species, such as Callistemon and Corea	Suggestion using speed camera to lower speed and calm traffic	
	Reduce to 1 lane each way		Repair footpath along main street	Bee attractive species are supported	Graffiti resistant furniture and signage	
	Emergency turning break to be considered, especially if road changes to single lane			Additional trees & low planting	Additional street furniture	
	Create designated bike lane				Propose bike racks, wheelchairs/mobility scooters parking to access community facilities	
Opportunities	This is DOT asset. To be considered in other projects.	No changes to current parking	Repair footpath along street	Inspect and replace street tree where roots damage footpath, install root barrier	Refurnish seatings on street to be consistent	Council to develop an Open Space Management Plan in 2022.
			Propose pedestrian crossing at bus stop	Additional low planting to median street	Proposed bollard lights where there are seating and pedestrian crossing	
			Formalise existing crossing	Propose planters/garden bed where there are seatings	Install bike racks and mobility vehicles parking	

Project Name	Drawing No.	Revision	Date	Drawn	Checked	Project Principal
Golden Plains - Streetscapes Framework Plan	321-0145-103-RP01	08	04.04.2022	SL	DC	DC

Tract

SMYTHESDALE

Project Name	Drawing No.	Revision	Date	Drawn	Checked	Project Principal	
Golden Plains - Streetscapes Framework Plan	321-0145-103-RP01	08	04.04.2022	SL	DC	DC	08

Smythesdale - Community Feedback

The Northern Streetscapes Project survey was open from Thursday 11 November to Tuesday 14 December 2021. During this time, residents were encouraged to view the concept designs for the streetscape of Smythesdale and provide feedback by completing a community survey or attending an in-person engagement session. An in-person engagement session was held at The Well, 19 Heales Street, Smythesdale from 10.30 to 11.30am on Saturday 27 November, 2022. During the consultation period, 29 community members provided feedback on the concept designs by completing the Northern Streetscapes Project - Smythesdale survey.

Below is a summary of community suggested feedback on improvement of the concept design, based on the five pillars.



PARKING

- More parking required.
- A change to parallel parking was not supported by the community, the recommendation is to maintain angled parking.
- Consider parking for caravan to attract visitors.



PEDESTRIAN SAFETY

- Crossing closer or directly in front of supermarket.
- Flashing light or traffic light at IGA pedestrian crossing.
- Crossing must be well marked and visual.
- Relocate exit from IGA supermarket to back entrance to avoid exit to highway.



STREET TREES

- Elm trees are not supported by community as they are considered messy and invasive.
- Plant more tree.
- Flowering trees preferred.
- Drought tolerant, native species preferred.



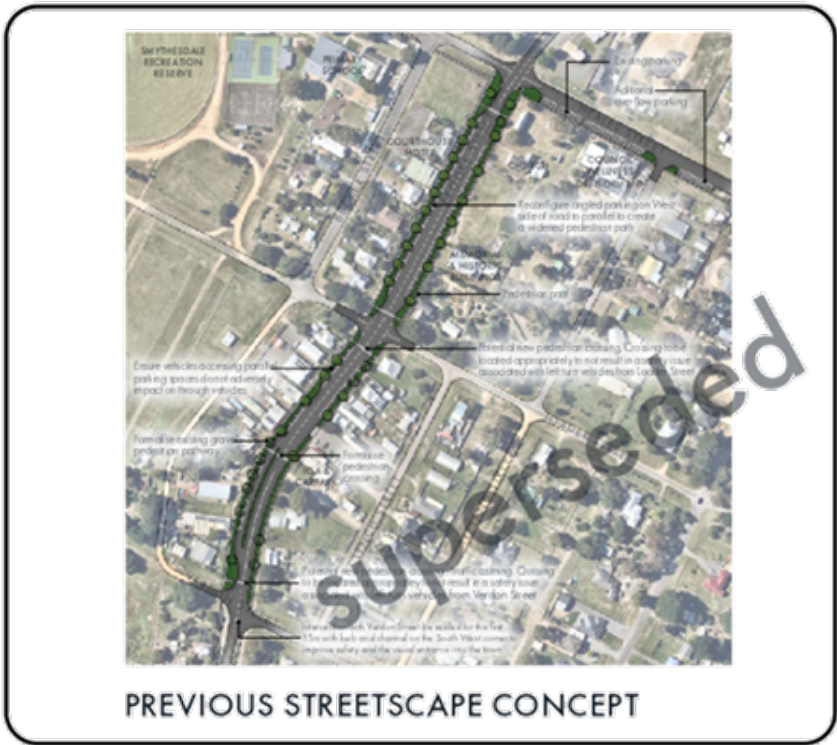
STREET FURNITURE

- Coordinate with IGA development for chance to create place marking & playground.
- Increase bins near Thru the Gate Cafe.
- More seating.
- Improve street lighting.
- Street banners are supported.



MAINTENANCE

- Increase regular maintenance.



Project Name	Drawing No.	Revision	Date	Drawn	Checked	Project Principal	
Golden Plains - Streetscapes Framework Plan	321-0145-103-RP01	08	04.04.2022	SL	DC	DC	09

Smythesdale - Site Analysis



Seating & bin at IGA
Opportunities to replace gravel with low planting.
Installation of light bollards to increase lighting and safety at night.



Pedestrian crossing & seating near cafe
Replace missing street trees.
Crossing is poorly defined and not safe for pedestrians, seating and furniture is out dated and needs replacing.



Seating at Memorial
Introduce garden bed, lighting bollards and bike rack.



Crossing & seating near church
Crossing is poorly defined, zebra/coloured linemarking required.
Introduce garden bed and lighting bollards to seating node.



Tract

Project Name	Drawing No.	Revision	Date	Drawn	Checked	Project Principal
Golden Plains - Streetscapes Framework Plan	321-0145-103-RP01	08	04.04.2022	SL	DC	DC

Smythesdale - Design Response

PARKING

- No changes to parking.
- Investigate parking for caravans with detailed traffic study (not included in the scope of the Northern Streetscapes Project).

PEDESTRIAN SAFETY

- Formalise existing pedestrian crossings near the church and bus stop, i.e. provide zebra line marking.
- Investigate potential relocation of crossing at Thru the Gate Cafe to the IGA supermarket and post office, which is currently an informal crossing used by pedestrians.

STREET TREES

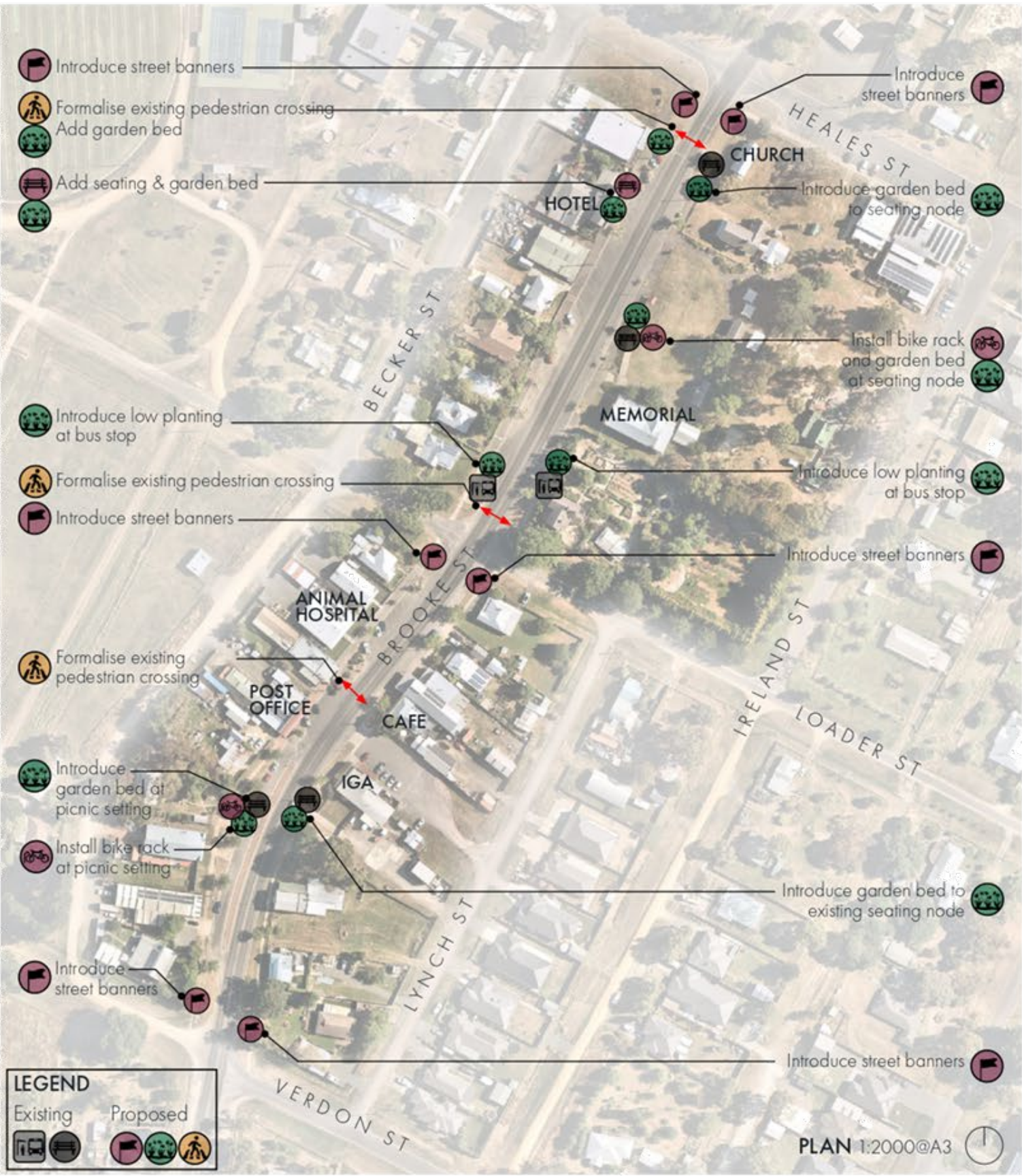
- Create garden beds with low planting where there are crossings and seatings.
- Native species and flowering species are to be considered.

STREET FURNITURE

- Install light bollards where there are seatings and pedestrian crossings.
- Provide bike racks at picnic setting and at seating near memorial.
- Install street banners.

MAINTENANCE

- Council to develop an Open Space Management Plan in 2022.



Tract

Project Name	Drawing No.	Revision	Date	Drawn	Checked	Project Principal
Golden Plains - Streetscapes Framework Plan	321-0145-103-RP01	08	04.04.2022	SL	DC	DC

Smythesdale - Suggested Planting Palette

All species below are native to Australia

Tract



Acacia cognata 'Limelight'
Limelight Wattle

- Small shrub 0.5-1mH x 1mW
- Low maintenance, drought resistant
- Attracts bees



Anigozanthos 'Amber Velvet'
Kangaroo Paw

- 1mH x 1mW
- Flower colour: yellow, red, orange
- Drought resistant
- Attracts bees and nectar eating birds



Callistemon viminalis 'Little John'
Dwarf Bottlebrush

- Small shrub 0.6-1mH x 0.6-1mW
- Red flower
- Low maintenance, drought resistant
- Attracts bees, nectar eating birds, butterflies and other insects



Carpobrotus rossii
Native Pig Face

- Groundcover 0.3mH x 1mW
- Pink flower
- Low maintenance, drought resistant
- Attracts bees and butterflies



Dianella tasmanica
Tasman Flax-lily

- Grass-like 0.6mH x 0.6mW
- Blue flower
- Low maintenance, drought resistant
- Attracts bees



Dianella 'Silver Streak'
Silver Streak

- Grass-like 0.5mH x 0.5mW
- Blue flower
- Low maintenance, drought resistant
- Attracts bees



Grevillea juniperina 'Molonglo'
Grevillea Molonglo

- Small shrub 0.4-0.8mH x 1-3mW
- Flower colour: yellow, orange
- Low maintenance, drought resistant
- Attracts bees, nectar eating birds, butterflies and other insects



Liriope muscari 'Royal Purple'
Royal Purple Lily-turf

- Grass-like 0.4mH x 0.6mW
- Purple flower
- Drought resistant



Viola hederacea
Native Violet

- Groundcover 0.2mH x 1mW
- Flower colour: white, purple, mauve
- Low maintenance

Project Name	Drawing No.	Revision	Date	Drawn	Checked	Project Principal
Golden Plains - Streetscapes Framework Plan	321-0145-103-RP01	08	04.04.2022	SL	DC	DC

Smythesdale - Before & After Sketch (indicative only)

Tract



Current Street View (photo by Google Maps)



Indicative sketch only to illustrate possible design outcome, subject to detailed design.

Formalised Pedestrian Crossing

Project Name	Drawing No.	Revision	Date	Drawn	Checked	Project Principal
Golden Plains - Streetscapes Framework Plan	321-0145-103-RP01	08	04.04.2022	SL	DC	DC

Tract

SCARSDALE

Project Name	Drawing No.	Revision	Date	Drawn	Checked	Project Principal
Golden Plains - Streetscapes Framework Plan	321-0145-103-RP01	08	04.04.2022	SL	DC	DC

Scarsdale - Community Feedback

The Northern Streetscapes Project survey was open from Thursday 11 November to Tuesday 14 December 2021. During this time, residents were encouraged to view the concept designs for the streetscape of Scarsdale and provide feedback by completing a community survey or attending an in-person engagement session. An in-person engagement session was held at the Scarsdale General Store, Scarsdale from 9 to 10am on Saturday 27 November, 2022. During the consultation period, 20 community members provided feedback on the concept designs by completing the Northern Streetscapes Project - Scarsdale survey.

Below is a summary of community feedback on improvement of the concept design.



PARKING

- Parking directly outside the post office.
- Accessible parking for older adults and people with a disability.
- Parking for delivery trucks.
- Additional parking spaces.



PEDESTRIAN SAFETY

- Better access to Scarsdale General Store and shops.
- Repair footpath from General Store to bus stop.
- A shared path is not support as it is considered unsafe for older adults by the community.



STREET TREES

- No tree planting to occur in front of shops to avoid losing visibility from road.
- *Lomandra* species is not supported as it has spikes when flowering.
- *Dianella*, *kangaroo paw* and *banksia* are supported.
- Planting in traffic island.



STREET FURNITURE

- Consider installation of community spaces with seats and plantings in areas that can be accessed safely.



MAINTENANCE

- Improve drainage.
- Maintenance to Scarsdale General Store.



PREVIOUS STREETSCAPE CONCEPT

OTHERS

Community members were very concerned about the **safety** of the Glenelg Hwy/Pittfield Rd intersection, and the speed at which vehicles travel. Many mentioned the need for a **roundabout** in this location and highlighted that as a key priority over beautification works.

This is clearly noticed and will be investigated in future projects.



Project Name	Drawing No.	Revision	Date	Drawn	Checked	Project Principal
Golden Plains - Streetscapes Framework Plan	321-0145-103-RP01	08	04.04.2022	SL	DC	DC

Scarsdale - Site Analysis



General store & gift shop
Some maintenance required to improve store fronts.



Bus stop
Existing bus stop is poorly defined and feels disconnected to existing retail stores due to degraded asphalt pavement.



Existing Pittosporums
These shrubs are a gardenesque species which lack the size, scale and canopy of a street tree so do not contribute to the streetscape character of the township



Tract

Project Name	Drawing No.	Revision	Date	Drawn	Checked	Project Principal
Golden Plains - Streetscapes Framework Plan	321-0145-103-RP01	08	04.04.2022	SL	DC	DC

Scarsdale - Design Response



PARKING

- Formalise on-road parking with linemarking and signage.
- Provide accessible parking spaces.
- Provide loading space delivery trucks.



PEDESTRIAN SAFETY

- Feature paving to existing footpath.
- Repair footpath at the southern end of Browns-Scarsdale road.
- Provide pedestrian crossing Browns-Scarsdale road.



STREET TREES

- Additional street trees.
- No tree planting to occur in front of shops to avoid losing visibility from road.
- Opportunity for garden bed at bus stop.
- Low planting to traffic islands.



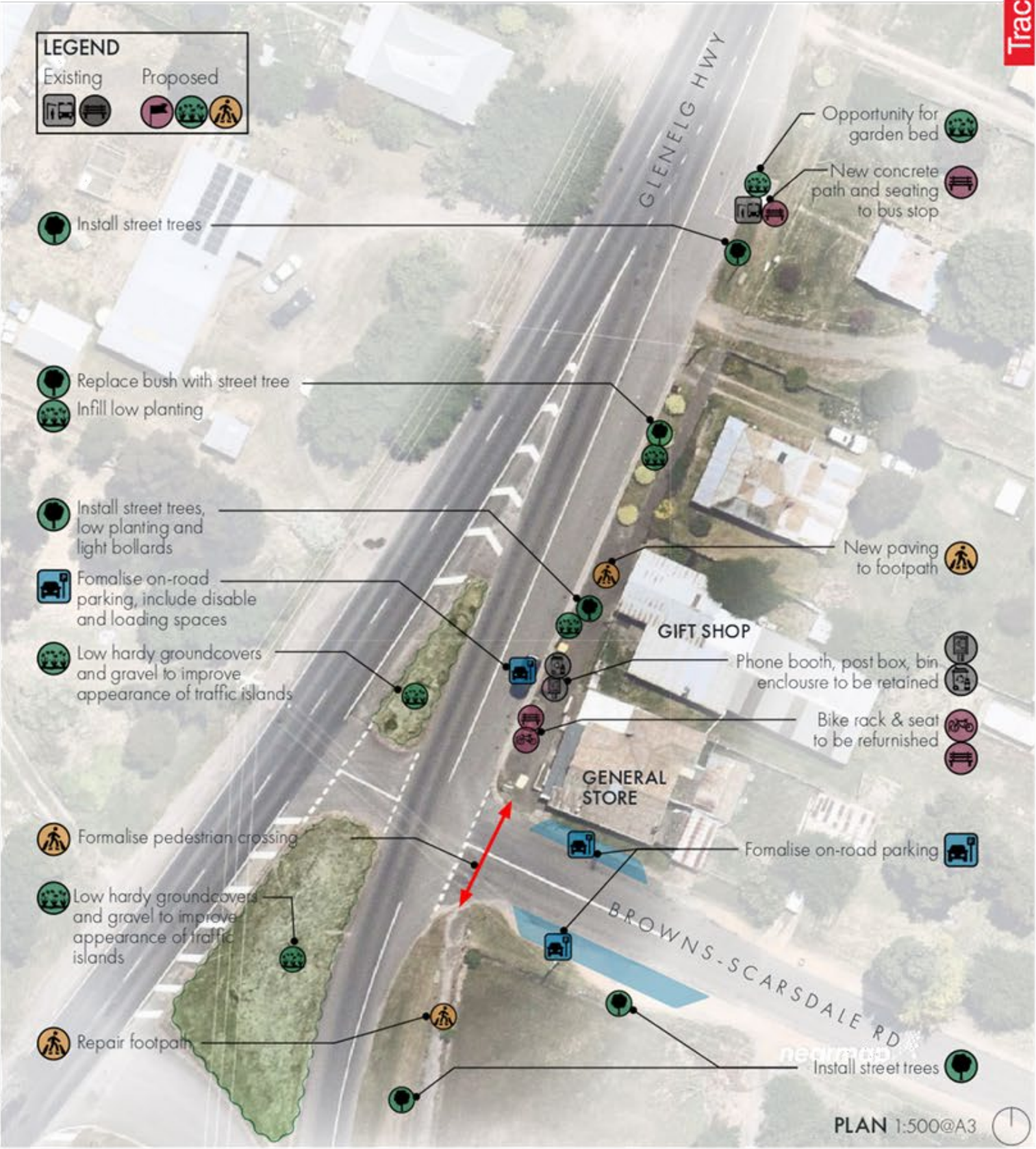
STREET FURNITURE

- Refurnish existing bike rack, bench seat and community notice board.
- Phone booth, post box and bin enclosure to be retained.
- Install seat at bus stop.



MAINTENANCE

- Council to develop an Open Space Management Plan in 2022.



Tract

Project Name	Drawing No.	Revision	Date	Drawn	Checked	Project Principal
Golden Plains - Streetscapes Framework Plan	321-0145-103-RP01	08	04.04.2022	SL	DC	DC

Scarsdale - Suggested Planting Palette

All species below are native to Australia

Tract

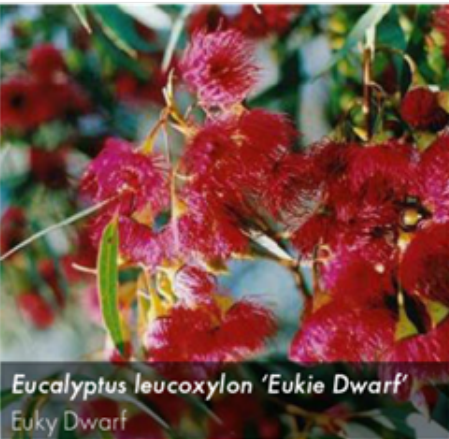
STREET TREES



- Banksia marginata**
Silver Banksia
- Small tree 5mH x 4mW
 - Flower colour: orange
 - Low maintenance, drought resistant



- Corymbia ficifolia**
Red Flowering Gum
- Small tree 2-15mH x 2-5mW
 - Flower colour: white, cream, red, pink, orange
 - Drought resistant
 - Attracts bees, nectar eating birds, butterflies, other insects and mammals



- Eucalyptus leucoxylon 'Eukie Dwarf'**
Euky Dwarf
- Small tree 4-10mH x 3-4mW
 - Flower colour: cream, red, pink
 - Drought resistant
 - Attracts bees, nectar eating birds, butterflies and other insects



- Melia azedarach 'Elite'**
White Cedar
- Medium tree 10mH x 8mW
 - Flower colour: white, purple

LOW PLANTING



- Anigozanthos 'Amber Velvet'**
Kangaroo Paw
- 1mH x 1mW
 - Flower colour: yellow, red, orange
 - Drought resistant
 - Attracts bees and nectar eating birds



- Banksia spinulosa 'Birthday Candles'**
Dwarf Hairpin Banksia
- Small shrub 0.5mH x 0.5-1mW
 - Orange flower
 - Low maintenance, drought resistant
 - Attracts bees, birds and other insects



- Carpobrotus rossii**
Native Pig Face
- Groundcover 0.3mH x 1mW
 - Pink flower
 - Low maintenance, drought resistant
 - Attracts bees and butterflies



- Dianella caerulea 'Breeze'**
Native Flax
- Grass-like 0.4-0.7mH x 0.4-0.7mW
 - Blue flower
 - Low maintenance, drought resistant
 - Attracts seed eating birds



- Myoporum parvifolium**
Boobialla
- Groundcover 0.3mH x 1-3mW
 - Pink flower
 - Low maintenance, drought resistant
 - Fast growing



- Westringia fruticosa**
Coastal Rosemary
- Large shrub 1.5-2mH x 1-1.5mW
 - Mauve flower
 - Low maintenance, drought resistant
 - Attracts bees and butterflies

Project Name	Drawing No.	Revision	Date	Drawn	Checked	Project Principal
Golden Plains - Streetscapes Framework Plan	321-0145-103-RP01	08	04.04.2022	SL	DC	DC

Scarsdale - Before & After Sketch (indicative only)

Tract



Current Street View (photo by Google map)



Streetscapes Improvement

Project Name	Drawing No.	Revision	Date	Drawn	Checked	Project Principal
Golden Plains - Streetscapes Framework Plan	321-0145-103-RP01	08	04.04.2022	SL	DC	DC

Tract


LINTON

Project Name	Drawing No.	Revision	Date	Drawn	Checked	Project Principal
Golden Plains - Streetscapes Framework Plan	321-0145-L03-RP01	08	04.04.2022	SL	DC	DC

Linton - Community Feedback


The Northern Streetscapes Project survey was open from Thursday 11 November to Tuesday 14 December 2021. During this time, residents were encouraged to view the concept designs for the streetscape of Linton and provide feedback by completing a community survey or attending an in-person engagement session. An in-person engagement session was held at Linton Shire Hall, Sussex Street, Linton from 12 to 1pm on Saturday 27 November, 2022. During the consultation period, 24 community members provided feedback on the concept designs by completing the Northern Streetscapes Project - Linton survey.

Below is a summary of community feedback on improvement of the concept design based on five pillars.



PARKING

- Current parking is sufficient.



PEDESTRIAN SAFETY

- Suggested pedestrian crossing at takeaway shop.
- Suggested pedestrian crossing near the bus stop.
- Repair footpath along main street.
- Blister and speed humps in previous concept location are not supported.




STREET TREES

- Tree roots causing damage to footpaths is a concern.
- Use native species, such as *Callistemon* and *Corea*.
- Bee attractive species are supported.
- Additional trees and low planting.




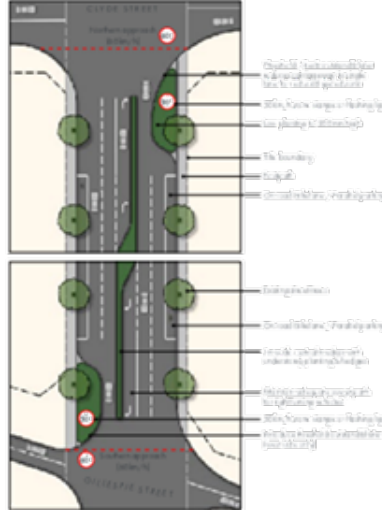

STREET FURNITURE

- Better lighting to illuminate roads and walkways.
- Suggestion to use speed camera to lower calm traffic.
- Graffiti resistant furniture and signage.
- Additional street furniture.
- Proposed bike racks and wheelchair and mobility scooter parking to increase access to community facilities.



MAINTENANCE

- Require regular maintenance.



PREVIOUS STREETSCAPE CONCEPTS

OTHERS

Community members also expressed interest in having a bike lane that connects from the Ballarat-Skipton Rail Trail through the town to the Public Park Reserve.

This is noticed and to be investigated in future projects.



Project Name	Drawing No.	Revision	Date	Drawn	Checked	Project Principal
Golden Plains - Streetscapes Framework Plan	321-0145-103-RP01	08	04.04.2022	SL	DC	DC

Linton - Site Analysis

Tract



Pedestrian crossing
No linemarking to pedestrian crossing.
Opportunity to introduce garden bed at crossing and infill planting to median strip



Bus stop & seating
Opportunity to install garden bed with lighting bollards
and provide pedestrian crossing



Small planter
Opportunity to introduce consisten planter or ground
garden bed to enhance landscape of town



Seating at Linton Shire Hall
Provide bike rack, refurbish seating and infill planting



PLAN 1:1000@A3

Project Name	Drawing No.	Revision	Date	Drawn	Checked	Project Principal
Golden Plains - Streetscapes Framework Plan	321-0145-103-RP01	08	04.04.2022	SL	DC	DC

Linton - Design Response

Tract



PARKING

- No changes to current parking.



PEDESTRIAN SAFETY

- Repair footpath along Sussex street.
- Propose pedestrian crossing at bus stop.
- Formalise existing crossing.



STREET TREES

- Inspect and replace street trees where roots damage footpath.
- Additional low planting to median street.
- Propose planters or garden bed where there are seatings.



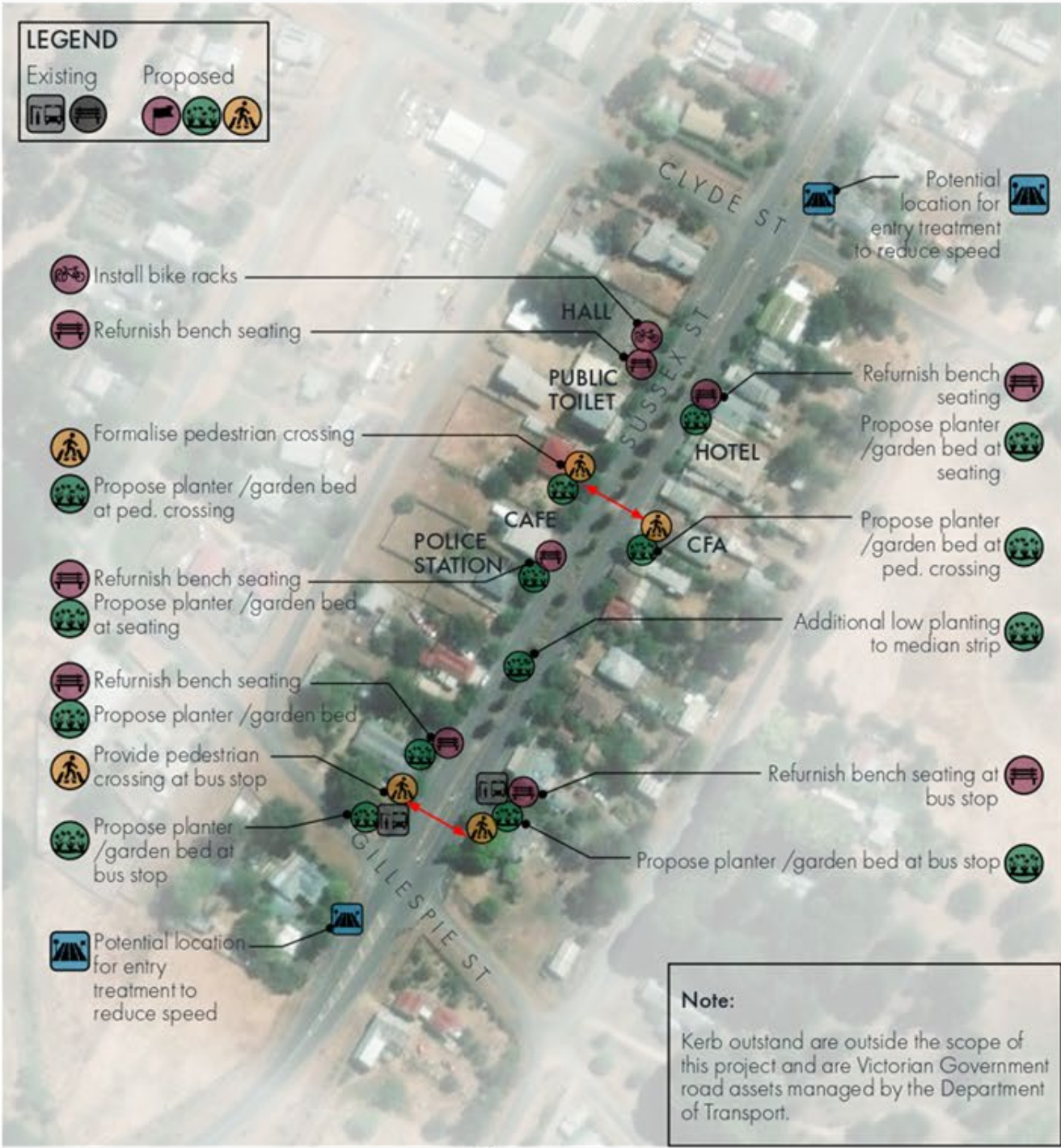
STREET FURNITURE

- Refurnish seatings on street to be consistent.
- Proposed bollard lights where there is seating and pedestrian crossing.
- Install bike racks and mobility vehicles parking.



MAINTENANCE

- Council to develop an Open Space Management Plan in 2022.



Project Name	Drawing No.	Revision	Date	Drawn	Checked	Project Principal
Golden Plains - Streetscapes Framework Plan	321-0145-103-RP01	08	04.04.2022	SL	DC	DC

Linton - Suggested Planting palette

All species below are native to Australia

Tract



Acacia cognata 'Limelight'
Limelight Wattle

- Small shrub 0.5-1mH x 1mW
- Low maintenance, drought resistant
- Attracts bees



Brachyscome multifida
Cut-Leafed Daisy

- Groundcover 0.2-0.5mH x 0.2-0.5mW
- Flower colour: mauve, white
- Low maintenance
- Attracts bees, butterflies, other insects and lizards



Callistemon viminalis 'Little John'
Dwarf Bottlebrush

- Small shrub 0.6-1mH x 0.6-1mW
- Red flower
- Low maintenance, drought resistant
- Attracts bees, nectar eating birds, butterflies and other insects



Correa reflexa
Common Correa

- Small shrub 0.5-1.2mH x 0.5-1mW
- Flower colour: cream, yellow, red, pink
- Low maintenance, drought resistant
- Attracts bees, nectar eating birds, butterflies and other insects



Carpobrotus rossii
Native Pig Face

- Groundcover 0.3mH x 1mW
- Pink flower
- Low maintenance, drought resistant
- Attracts bees and butterflies



Dianella 'Silver Streak'
Silver Streak

- Grass-like 0.5mH x 0.5mW
- Blue flower
- Low maintenance, drought resistant
- Attracts bees



Dianella tasmanica
Tasman Flax-lily

- Grass-like 0.6mH x 0.6mW
- Blue flower
- Low maintenance, drought resistant
- Attracts bees



Grevillea juniperina 'Gold Cluster'
Grevillea Gold Cluster

- Small shrub 0.4-0.8mH x 1-3mW
- Flower colour: yellow, orange
- Low maintenance, drought resistant
- Attracts bees, nectar eating birds, butterflies and other insects



Philotheca myoporoides
Wax flower

- Small shrub 0.8-1mH x 0.8-1mW
- Flower colour: white, pink
- Low maintenance, drought resistant
- Attracts bees, butterflies and other insects



Westringia fruticosa
Coastal Rosemary

- Large shrub 1.5-2mH x 1-1.5mW
- Mauve flower
- Low maintenance, drought resistant
- Attracts bees and butterflies

Project Name	Drawing No.	Revision	Date	Drawn	Checked	Project Principal
Golden Plains - Streetscapes Framework Plan	321-0145-103-RP01	08	04.04.2022	SL	DC	DC

Linton - Before & After Sketch (indicative only)

Tract



Current Street View (photo by Google map)



Indicative sketch only
to illustrate possible
design outcome, subject
to detailed design.

Pedestrian crossing at bus stop

Project Name	Drawing No.	Revision	Date	Drawn	Checked	Project Principal
Golden Plains - Streetscapes Framework Plan	321-0145-103-RP01	08	04.04.2022	SL	DC	DC

Linton - Before & After Sketch (indicative only)

Tract



Current Street View (photo by Google map)

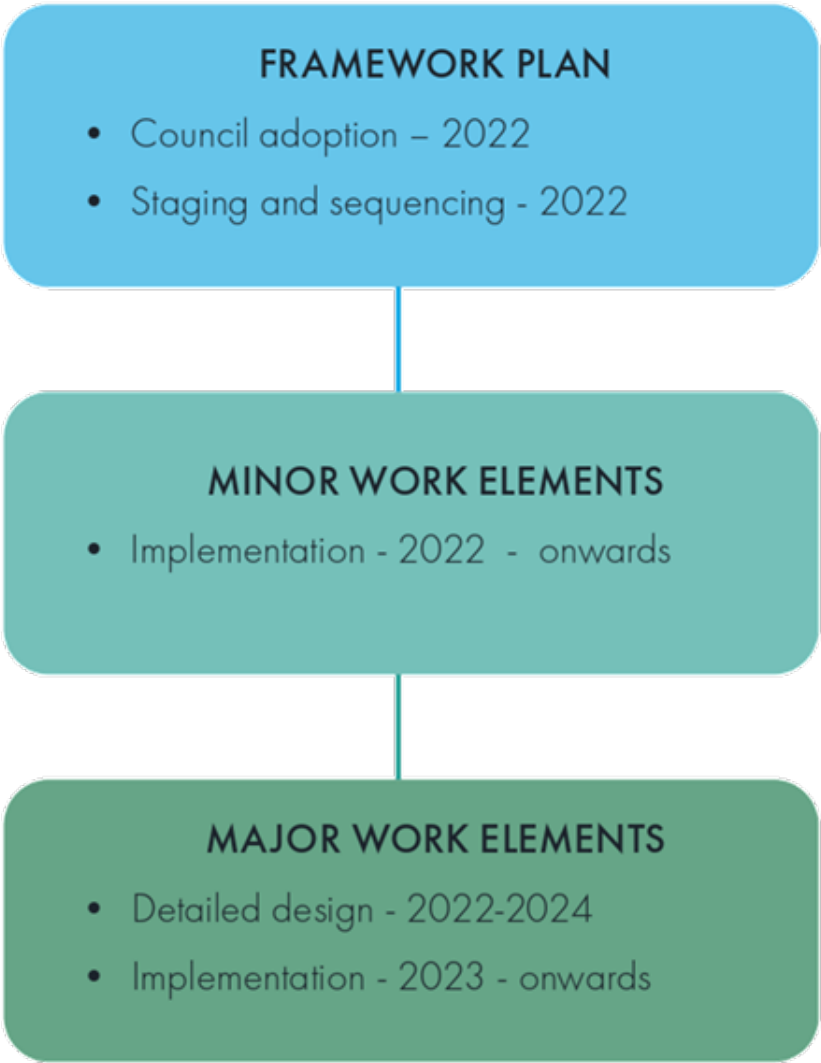


Indicative sketch only
to illustrate possible
design outcome, subject
to detailed design.

Entry treatment at intersection with Clyde street

Project Name	Drawing No.	Revision	Date	Drawn	Checked	Project Principal
Golden Plains - Streetscapes Framework Plan	321-0145-103-RP01	08	04.04.2022	SL	DC	DC

NEXT STEPS



Works will be funded by a mix of Council contributions and external grant funding opportunities.

Project Name	Drawing No.	Revision	Date	Drawn	Checked	Project Principal
Golden Plains - Streetscapes Framework Plan	321-0145-103-RP01	08	04.04.2022	SL	DC	DC

Appreciation

Tract

Thank you to the local community, community representatives and Councillors who provided feedback as part of the community engagement sessions and by completing the Northern Streetscape Project surveys. Your input, ideas and comments are highly valued and have helped shape this Northern Streetscapes Framework Plan.

Project Name	Drawing No.	Revision	Date	Drawn	Checked	Project Principal	
Golden Plains - Streetscapes Framework Plan	321-0145-103-RP01	08	04.04.2022	SL	DC	DC	28



2 Pope Street, Bannockburn, VIC 3331
19 Heales Street, Smythesdale, VIC 3351

PO Box 111, Bannockburn, VIC 3331

☎ 5220 7111

@ enquiries@gplains.vic.gov.au

💻 goldenplains.vic.gov.au

CUSTOMER SERVICE HOURS
Bannockburn Customer Service Centre
8.30am to 5pm, Monday to Friday

The Well, Smythesdale
8.30am to 5pm, Monday to Friday

🐦 @GPSCouncilNews

📷 lovegoldenplains

📘 GoldenPlainsShire

👤 GoldenPlainsMayor