



Napoleons Community Plan 2014

Town Vision:

To be a successful “family” town in a rural setting, attracting new residents and modest growth; a sustainably operating shop and school; and with improved recreation and facilities and more employment.



Napoleons Community Plan

Community coordinators: Martin Bailey
Natalie Abbott
Anthony McManus
Mary Tubb



GOLDEN PLAINS SHIRE

Olivia Davison 03 5220 7159
dwaight@gplains.vic.gov.au

goldenplains.vic.gov.au 427 935 190



Stephen Axford 03 9662 1999 stephen@axos.com.au

Christine Wallis 03 9662 1999 christine@axos.com.au



Contents

Introduction

About Community Planning

The aims and objectives of this plan

Introducing Napoleons

Background / History

Community Planning

Recent history

Snapshot

How we prepared the Plan

Introducing the coordinators

Facilitators and Council input

The process to review the plan

Structure Plan

Consultation Outcomes

Introducing the Plan

The previous plan: achievements

The New Plan

Our community vision

How the plan is organized- Community and Town

Actions- Short term and long term

Seed-funding Priorities

Implementation

Next steps

Alterations or disputes

How to get involved

Become a coordinator

Get involved in a project or initiative

Keep informed (add your name to a contact list)



Introduction

About Community Planning

Community planning is about enabling communities to identify, find solutions and implement projects that address social, environmental, health and wellbeing, infrastructure, cultural and economic goals, issues and opportunities.

Through the program, Council aims to assist and strengthen the communities in Golden Plains, help them become more environmentally and socially sustainable, foster a sense of community spirit and pride and increase residents involvement in community life.



Image from the pre consultation meeting



Introducing Napoleons

Background / History

Napoleons is 130 kilometers west of [Melbourne](#) and only 15 km south of Ballarat. It retains its identity as a distinct country town surrounded by grazing land and forests. In the 2011 Census the state suburb of Napoleons is shown to house 535 people, although this boundary may not capture everyone who sees the town as their base.

Prior to European settlement the area near Ballarat was the home of the Wathaurung tribes who are thought to have lived here for at least 25,000 years.

The town is served by Napoleons Primary School, and it has a substantial recreation reserve and a sizable public hall, and a combined general store/ petrol station that includes the community postal agency.





Community Planning

In 2011 A community plan was prepared that recognized the recreation reserve, hall, school as the key assets of the town, and improving these became the key focus for the plan. In particular the plan focused on supporting the primary school, and promoted the concept of a kindergarten for Napoleons in order to attract local children to go to the local primary school rather than follow cohorts into schools in Buninyong or Ballarat.

Recent history

The district covering the areas of Napoleons, Cambrian Hill, Black Lead, Scotchman's Lead and Enfield has had a long and colourful history. The area was one of the first in the Ballarat district to be settled by European men in 1837. There was a complete change of character in 1857 when gold was discovered, from the initial rush for alluvial gold when thousands of miners sought to make their fortunes by panning along the creeks to the establishment of deep lead mining, which dominated the district until the early 1900s. Napoleons was first known as 'Napoleon's Lead' and later was called Napoleon and then eventually Napoleons.

In 1865 the Victorian Gazetteer described the settlement of Napoleons as a small mining and agricultural village comprising a population of 800 people, of which 150 were miners. Twenty-four mines operated in the Napoleons surrounding area. By the late 19th century Napoleons (whose name originated from a miner nicknamed because of the hat he wore) had developed into a thriving township comprising four hotels, a grocer, butcher, blacksmith, post office, three churches and two denominational schools (*Napoleons & District. The First 150 Years*).

While the majority of the early population was miners, others came as or became farmers, business owners, tradesmen, teachers, splitters, mill owners, timber workers and wood carters. As mining declined the district returned to a rural farming community. Remnants of Napoleons heritage are still visible today including Nelson's Water Hole where miners camped to water their horses, mullock heaps indicating the site of former mines and the heritage listed former police station and residence located on the Colac-Ballarat Road. The former Napoleons Police Station and residence is of historical significance as an early police building established to provide a permanent police presence in the Napoleons district and southern Buninyong goldfields in the 1880s. It is also significant for serving as a teacher residence for the Napoleons State School from 1916 until the 1960s.



Napoleons in Figures: a quick snapshot

2011 Census QuickStats

All people - usual residents



Australia | Victoria | State Suburbs

Napoleons

Code SSC20976 (SSC)



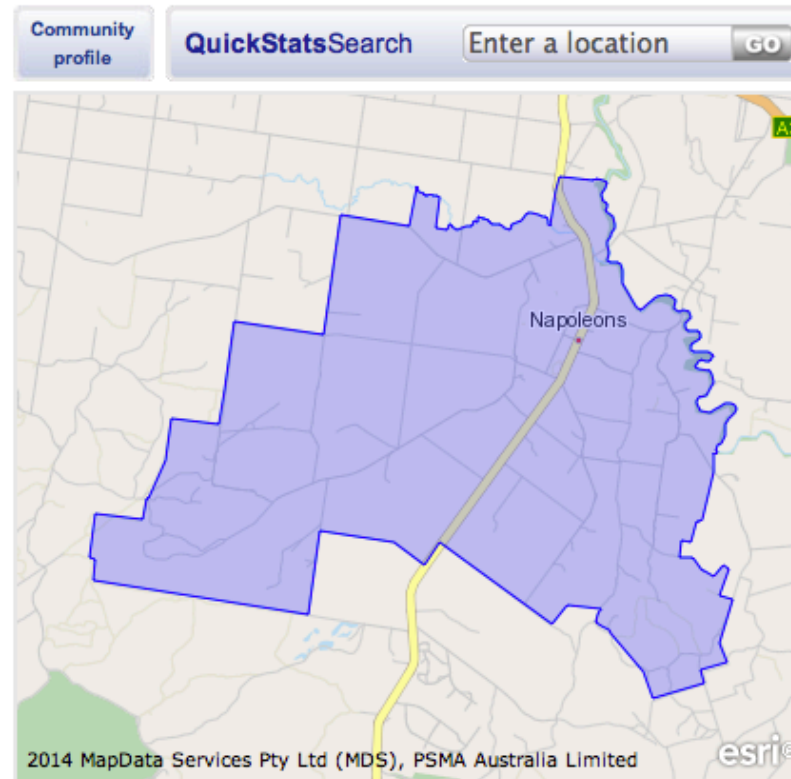
People	535
Male	275
Female	260
Median age	41



Families	149
Average children per family	2.1



All private dwellings	196
Average people per household	3
Median weekly household income	\$1,351
Median monthly mortgage repayments	\$1,517
Median weekly rent	\$228
Average motor vehicles per dwelling	2.6



source: Australian Bureau of Statistics, 2014
www.censusdata.abs.gov.au



How we prepared the Plan

Consultation for the community plan was carried out in parallel with a review of the Napoleons Structure Plan, to avoid confusing the community with competing sessions covering much the same topics. The coordinators had a pre meeting with the Council Planners to agree on topics and an agenda for a public meeting; and three Coordinators plus the independent facilitator attended the public meeting held in May 2014 and participated in the discussions. Later summaries of the discussions were exchanged and analysed in a subsequent Community Planning meeting.

From the discussion a set of priority actions were developed and brought together into an overall vision statement.

VISION

A vision as to how Napoleons should be seen in 20 years time has been developed through the structure plan process. The vision reflects the aims and aspirations of the Council and the local community, and can be used as a basis to guide decisions for the township.

Napoleons will be a place where:

- The appearance of the town and its assets are a source of pride and contribute to the safe and welcoming country town character.
- Where residents can enjoy an alternative, affordable quiet and relaxed country lifestyle.
- Where the community is connected through participation in projects and events that build pride and enhance the livability of the town.
- There are opportunities to start a business, value add and develop incomes locally.
- The heritage character is celebrated.
- The environmental landscape is valued and enhanced.

Town Vision:

To be a successful “family” town in a rural setting, attracting new residents and modest growth; a sustainably operating shop and school; and with improved recreation and facilities and more employment.

Consultation outcomes:



Residential Growth:

The Napoleons community values the rural lifestyle feel and history of the town; further growth in the township should reflect this. In general the community support some growth in the township to ensure a sustainable and vibrant community. This should be encouraged through infill development in the Township Zone. The community values retaining the country character of Napoleons with larger lot sizes of 8000 sqm (.8 ha) and not becoming suburban by keeping the open spaces and the rural living aspect. The community expressed concern at the limitation to in-fill development on land where there was continued farming activity.

Connectivity:

The general store, school and recreation reserve are vital services valued by the community. Their success is important to the overall well-being of the town and growth in the town is necessary to ensure the ongoing success of these services. The community values the connectivity between these services and there is a strong desire for improved physical and social connections between them.



Images from consultation May 2014

Road traffic, conditions and maintenance:

The Colac-Ballarat Road is an 88-kilometre State arterial road. The road links a number of small towns including Napoleons, to the Princes, Hamilton and Midland Highways and the regional cities of Ballarat, Geelong and Warrnambool. Non-compliance with the speed limit on the Colac-Ballarat Road as it bisects the Napoleons township is an ongoing concern for the community. The community has worked hard to

lobby for a safer environment for pedestrians in the vicinity of the Napoleons Primary School, specifically to install 40km/h flashing speed limit signs. VicRoads maintains the most recent traffic data available indicates that the Colac-Ballarat Road in the vicinity of the Napoleons Primary School has less than 1,500 vehicles per day and therefore does not satisfy the warrants for the installation of electronic school speed zone signage. Council continues to lobby VicRoads on the community's behalf.

The community values the grading and maintenance of gravel roads and encourages Council to maintain a safe well-graded road network in the Napoleons area.

Amenity:

Over the next 5-10 years, the community would like to see streetscape enhancements that improve the social connectivity between the services. The General Store area provides an informal meeting place for the community and visitors to Napoleons. The community considers streetscape treatments would support traffic calming measures and encourage speed limit compliance in the township area.

Education Facilities:

The community expressed a desire to maintain a community vibrancy that supports educational facilities in Napoleons. The Golden Plains Shire Early Years Infrastructure Plan 2011 identifies that an early years facility is needed in Napoleons. Council is actively pursuing the facilitation of this initiative.





Introducing the Plan

Achievements from the previous plan:

- Town sign underway almost finished
- The kindergarten proposal has gained support from the council; further studies are planned
- Franklin bridge safety issues attended to
- Improvements to children's safety and advocated for Children's Safe Crossing.
- Footpath on the West side of the road to connect the school down to Irish Lane
- Post boxes in the town was a goal: The shop now has a postal service.





The New Plan 2012-2014

It is a key goal is to attract more people to Napoleons. The community expressed the view that despite the research provided by the planners in practical terms there are very few opportunities for new houses to attract families. This is critical to support the school, kinder proposal, shop and facilities. There is a potential ripple effect from lack of new housing: eg education is considering removing some classrooms. Any house that does come on the market sells in days. Decided the community will lobby *all* levels of government to consider making more residential land available, and to take other measures to attract families. This can include streetscape changes to make the town more family friendly; improving services; improving facilities such as the recreation reserve; improving traffic safety especially for school kids.

How the plan is organized- People and Place

People (Software):

- Social, activities, events, arts and heritage, youth
- Economic development, tourism
- Management, groups and organisations, sports & recreation

Place (Hardware):

- Built Form, facilities
- Infrastructure, roads, paths and trails, parking access, safety
- Natural environment, landscape

This is illustrated in the following diagram:

Vision	Small, Achievable, Short Term	Big, Complex, Aspirational
People (activities and events, uses, etc.)		
Place (Buildings, Public Spaces, Trails, Landscape, etc)		

Town Vision:

To be a successful “family” town in a rural setting, attracting new residents and modest growth; a sustainably operating shop and school; and with improved recreation and facilities and more employment



Big Picture Issues:

1) Kindergarten. To support the viability and growth of the school, it is important to achieve a kindergarten in Napoleons; this will support the growth of the community and local services

2) Attract more business and economic development
Noted a key limitation is lack of Sewerage. The strategy is to try to hang on to as much as possible until new technology might allow local packaged sewer systems for the centre of town.

More local employment opportunities would help. An industrial estate was considered some time ago. Perhaps there should be a small industrial estate.

If /when the by pass does go ahead it opens opportunities near the freeway i.e. closer to Ballarat

More immediate / carry forward issues:

- Noted the shop precinct has greatly improved with better management and the streetscape upgrade. Encourage this development; support the shop site townscape works
- We want a master plan for the recreation reserve area to ensure the needs of the current and future users are met along with the changing demands of the community to

coordinate and relocate facilities, as the area badly needs coordination.

- More community events e.g. community field day; market; recreation; arts; training
- Further improvements to hall eg new chairs and tables; curtains; exterior lights; air conditioning; solar energy/water heating
- Clean up the town entrance at Sobeys road. Lobby VicRoads and Council
- Improve children's safety eg formal school crossing. Complementary strategies e.g. sculptures of silhouetted people to remind drivers of the school, children, other pedestrians etc...
- Traffic safety is still a big issue and expected to be worse with the removal of 80 kph signs
- Noted drainage was a top issue in the survey



People (Software):

Social: activities, events, arts and heritage, youth

Economic: development, tourism,

Management: groups and organisations, sports and recreation,

More community activities

- events
- coordinate facilities
- improve conditions

Traffic Safety

- crossing
- speed signs
- traffic measures/ calming

Kinder

Sustainable growth for the town

Place (Hardware):

Town Centre Improvements

- shop area
- footpaths
- tree planting

Improve Town Entrance

- clean up
- signs

Improvements to Hall

- new tables, chairs

DR

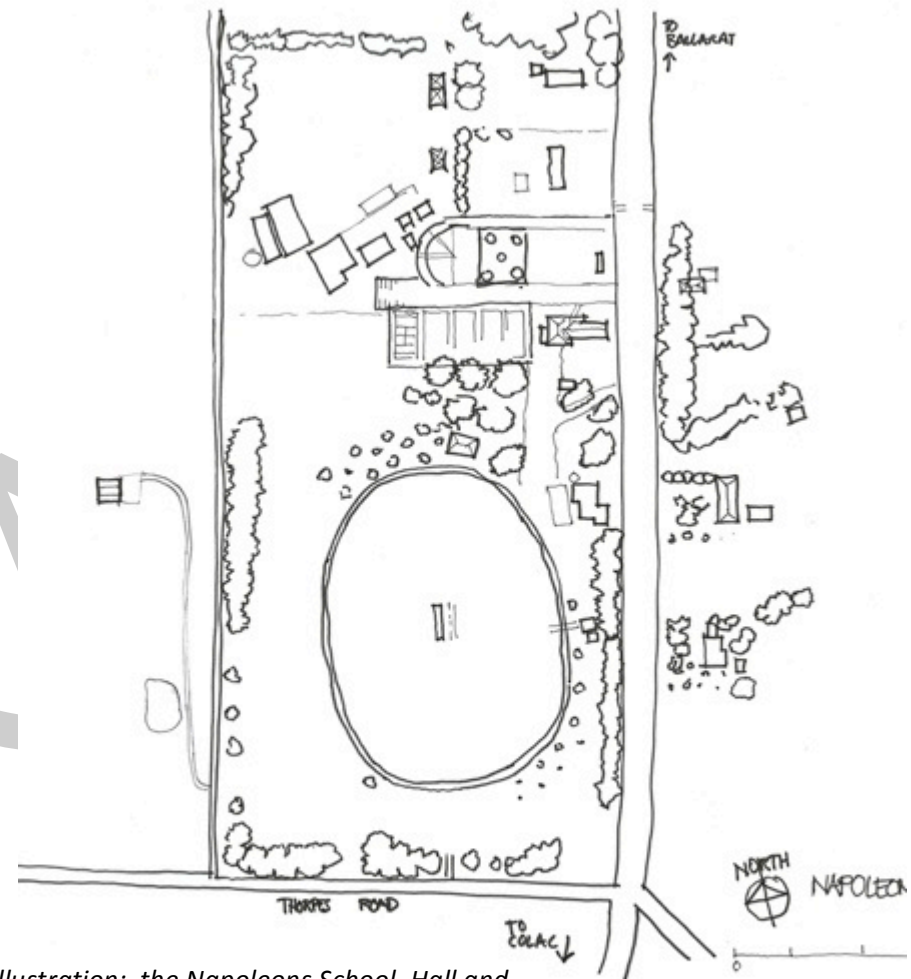


Illustration: the Napoleons School, Hall and Recreation Area





Seed Funding Priorities:

Events

Hall improvements

Masterplan for the Reserve

Opportunities

New Ballarat bypass

Connects Napoleons to the employment growth area in Ballarat

Potential for further employment clusters along the by-pass





Implementation

Next steps:

Display consultation notes and ideas at local shop for community comment

Contact CFA and local groups for comment and ideas

Alterations or disputes

Administration and processes

The community planning group retains the right to establish procedures that will manage community affairs when implementing the community plan. These procedures will be developed to ensure transparency and democratic processes.

Alterations to the Community Plan

Since the Community plan has been established through a public process, any alterations to the Community plan also need to be undertaken through a public process. The community planning group therefore reserves the right to establish the procedures associated with any proposed change in order to retain the Community plan as a vibrant, flexible and dynamic document.

Review of the Community Plan

The Community plan will be reviewed approximately every two years through a public process to be determined by the community planning group.

Dispute Resolution

In the event of any dispute, all parties concerned should meet, discuss and resolve the matter as soon as possible. If the parties are unable to resolve the dispute, they must hold a meeting in the presence of a person nominated through the Golden Plains Shire Council.

How to get involved

- Become a coordinator
- Get involved in a project or initiative
- Keep informed (add your name to a contact list)