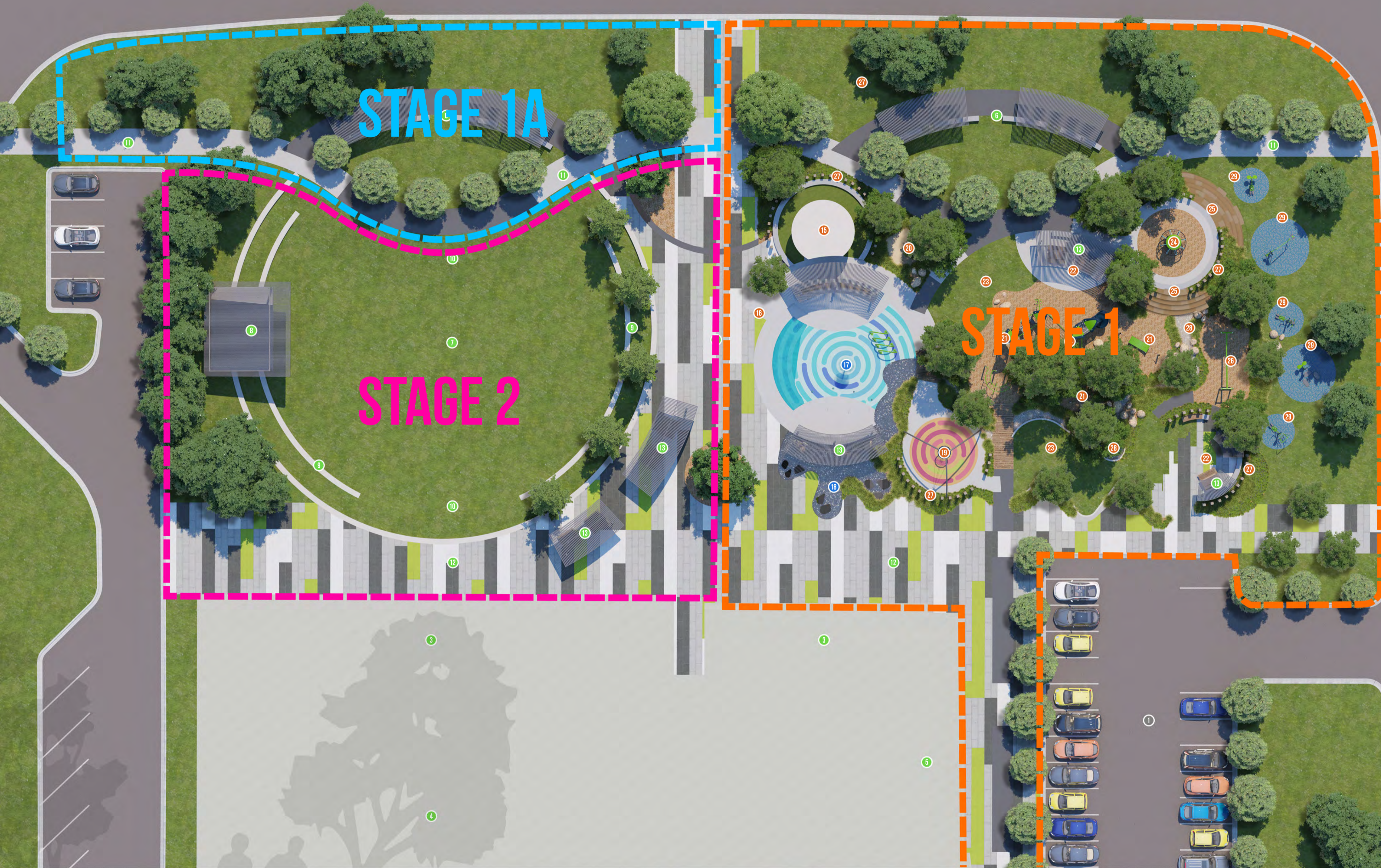




# BANNOCKBURN CIVIC HEART PROJECT

## CONCEPT MASTER PLAN

MILTON STREET



- 1 Carparking
- 2 Loading / Multi Use Area (located south of car parking area)
- 3 Bannockburn Cultural Centre
- 4 Library
- 5 Community Building
- 6 Bannockburn Farmers Market  
The Milton Street verge Farmers market to be extended to allow additional area for stalls and pedestrians. Dual pathways included to increase access to stalls and improve circulation. Strategically placed shade trees create a tree lined avenue pathway through the market area with seating elements included to provide rest and congregation areas for pedestrians.
- 7 Village Green  
A turf area of approximately 1000m<sup>2</sup> provides a 'Village Green'. This area will provide a space for gathering, picnic, or viewing a performance. This area also provides a potential expansion area for the Farmers Market and a performance space for concerts and community events. Large shade trees are incorporated to provide shaded seating areas.
- 8 The Village Green Stage  
A raised stage area will be incorporated into the terraced steps of the Village Green providing a formal space for performances, concerts and community events. This is ideally located to the western perimeter of the Village Green with access for loading to the immediate west along parking associated with High Street.
- 9 Turf Terraces  
A series of turf terraces to the perimeter of the Village Green increase the functionality of the space providing shaded seating areas as well as areas for informal play.
- 10 Turf Embankments  
Gently sloping turf to the northern and southern ends of the Village Green provide seating areas for viewing performances as well as areas for informal play. The areas will act as seating areas during concerts and community events. Large shade trees are incorporated to provide shaded seating areas.
- 11 Primary Circulation Path  
The primary East - West pathway at width 2.5m runs parallel to Milton Street. This sets up the main circulation and access to the Farmers markets and links all spaces across the site ie The Village Green, The Main Plaza and Bannockburn Adventure Playground.
- 12 Central Plaza  
The Central Plaza provides the primary east - west access (Bannockburn Cultural Centre frontage) as well as the primary north-south access (separating the Village Green and the Bannockburn Adventure Playground). This plaza hardstand area will feature hardstand to match the architectural finishes palette of the Bannockburn Cultural Centre. This hardstand area links all areas of the site and provides areas for functions, events and gatherings. This hardstand treatment is extended through into the Water Play area and the larger Bannockburn Adventure Playground to integrate and promote pedestrian connectivity.
- 13 Shade Awnings  
Shade awnings strategically placed throughout the site provide shaded seating areas. With reference to location (refer adjacent reference numbers) these awning area associated with BBQs, picnic settings, seating areas and play spaces to provide shade where natural shade is unachievable or impractical.
- 14 Bannockburn Adventure Playground  
An area of approximately 1500m<sup>2</sup> of water play and highly embellished adventure play spaces. The adventure playground is the key feature within Bannockburn Civic Heart. It will feature varied play spaces catering for a wide range of ages and providing an adventurescape for exploration and enjoyment. The play areas combine feature play equipment pieces with natural adventure elements including rock hop adventure trails, dry and wet creek areas, garden areas, open turf spaces set within a network of pathways and informal trails. Parents are encouraged to actively engage with the space with shelters, picnic areas, seating and blobs located strategically throughout the space to promote passive surveillance and varied experiences throughout the playground. Surface treatments are varied with densely planted garden beds wrapping around natural softfall play areas, boulders and natural creek beds connect the various play spaces. The nature play spaces are complimented with a more traditional Water Play area featuring paddle areas, interactive fountains and colourful water play elements. The 'natural' creek bed that wraps through the nature play areas becomes an expanded paddling pool in this area for toddlers and parents to explore.
- 15 Toilet Block and Pump Station
- 16 Primary Park Access  
This pathway provides the primary park access (entry off Central Plaza) and connects to all areas of the playground. Secondary entries are located along the perimeter of the park however this provides the main access to the adventure play areas bypassing the wetplay.
- 17 Water Play Area 1  
The water play area will feature interactive water play items including a 'water cage', 'water coils', 'pop dropp' fountains, tall water spouting fountains and interactive 'water cannons'. These water play elements are separated into categories that would allow the space to function in all seasons. ie water play elements that 'completely soak' the user would not function in winter months with only the smaller scale interactive water play items functional at these times. A maze in this play space would increase the functionality of this space during these colder months.  
  - Raised Seating Areas
  - Water Cannons
  - Water Fountains
  - Water Coils
  - Water Cage
- 18 Water Play Area 2  
This water play area is separated from the more 'active' Water Play Area 1 and is the termination zone for the creek that runs through the playground. This area feature natural pebble with shallow paddling water and a series of 'paved platforms' that provide informal seating areas for parents and toddlers. It is envisaged that this is a playspace for younger children to explore rock holes and paddle in a shallow natural rock pool area.
- 19 Mega Swing  
Mega Swing is a tripod giant swing providing multiple activities including climbing, turning, running, gathering and socializing. This feature play equipment piece is visually impressive standing at a height of over 2.5m and accommodating 4-6 children. Given the close proximity to the wet play areas, natural softfall such as bark is not proposed in this area and is located within rubberized softfall that reflects the design aesthetic of the waterplay 'maze' patterning. A perimeter of totems help to enclose the space and echo the Cultural Centre design aesthetic. A garden bed assists in further separation of this play space from the water play areas and the adjacent turf play space. An exposed aggregate pathway traverses around the softfall completing the pedestrian circulation pathway.
- 20 Excavation Play  
This play space features a sand pit surrounded by natural sandstone boulders. This space includes a 'mechanical digger' that is operated by a child through manipulation of levers. This play space encourages problem solving and hand-eye coordination. Shade trees planted within the perimeter garden beds provide shade over this interactive playspace.
- 21 Adventure Play  
The central play space features a range of play equipment that encourage physical activity and exploration. The play equipment proports climbing and balance and is set out to promote the exploration of the various play equipment pieces via natural rock hop pathway connections. Tongues of planting help to separate the various play equipment pieces providing a sense of enclosure, exploration and discovery. The play pieces are set within a natural bark softfall area with boulder strategically placed outside of fall zones associated with tree planting to provide natural shade.  
  - Curved Horizontal Monkey Bars
  - 4-5 Module Adventure Play Playbooster LS 10T
  - Balance Hammock
  - Mini Web Climber
- 22 BBQ Area  
BBQ areas with associated picnic tables and shelters. These BBQ areas are strategically located throughout the playspace to allow passive surveillance across the playspace.
- 23 Passive Play  
Open turf areas within the Adventure Playground provide areas for passive play and picnic areas. Shade trees in perimeter planting areas provide natural shade to allow use in all seasons.
- 24 In Motion Play  
Global Motion freestanding rotating climber provides multiple activities including climbing, turning, running, gathering and socializing. This feature play equipment piece is visually impressive standing at a height of over 2.5m and accommodating 8-12 children. A perimeter of totems help to enclose the space and echo the Cultural Centre design aesthetic. A garden bed assists in further separation of this play space from the water play areas and the adjacent turf play space. An exposed aggregate pathway traverses around the softfall, completing the pedestrian circulation pathway. This play item is located at a raised level overlooking the adventure playground. Access to this area is via either a pathway or by traversing a series of rock terraces (see 25).
- 25 Rock Terrace Climb  
The Rock Terrace Climb is the most elevated play area of the Adventure Playground. It features terraced natural rock steps promoting climbing and exploration. These terraced rocks provide access to the In Motion Play Q2 space. These steps are interspersed with planting areas to direct and guide the occupants through the playground areas. This elevated area also serves as the 'origin' of the creek that wraps through the site through a waterfall down the terraced rock.
- 26 Flying Fox  
Flying Fox set within a natural mulch softfall. This play item is accessible either by rock hop or by access from the open turf area to the south. This play area is one of the more 'concealed' play areas that requires exploration to uncover.
- 27 Totems  
Totems are used throughout the site for wayfinding and to separate areas of play and create 'enclosure' to certain play items. These echo the design aesthetic of the Cultural Centre.
- 28 Creek Bed  
A shallow pebble creek wraps through the playground. It is envisaged that this will be used as an 'access path' for young explorers. This creek bed is accessible from many areas of the playground via rock hops, directly from turf surfaces or by climbing through the terraced rock areas.
- 29 Gym Equipment  
An assortment of gym equipment including chest and back press, cardio steppers, assisted rowing machine (5 pieces in total TBC).

